

REC'D. BY SEP 08 1998

**IN THE MATTER OF THE AMENDMENT TO THE
JOINT RESOLUTION FOR ORDERLY ANNEXATION BETWEEN
THE TOWN OF MONTICELLO AND THE
CITY OF MONTICELLO, MINNESOTA
PURSUANT TO MINNESOTA STATUTES 414.0325, SUBD. 1**

TO: Minnesota Municipal Board
165 Metro Square Building
St. Paul, MN 55101

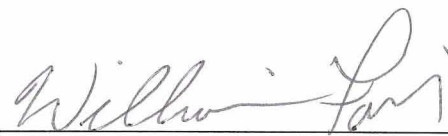
The Town of Monticello and the City of Monticello hereby jointly agree that the joint resolution between the Town of Monticello and the City of Monticello designating an area for orderly annexation dated March 6, 1998, be amended to include the following:

The Northwest Quarter of the Northwest Quarter of Section 19, Township 24,
Range 121, Wright County, Minnesota.

Both the Town and the City agree that no alteration of the stated boundaries of this agreement is appropriate. Furthermore, both parties agree that no consideration by the Board is necessary. Upon receipt of this resolution, the Municipal Board may review and comment but shall, within 30 days, order the annexation of the following-described property in accordance with the terms of the joint resolution.

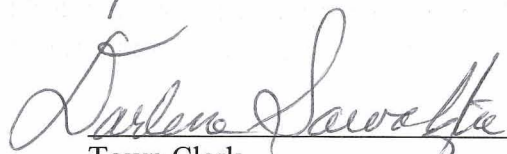
Approved by the City of Monticello this 10 day of AUGUST, 19 98.


City Administrator


Mayor

Approved by the Town of Monticello this 17th day of Aug, 19 98.


Town Chair

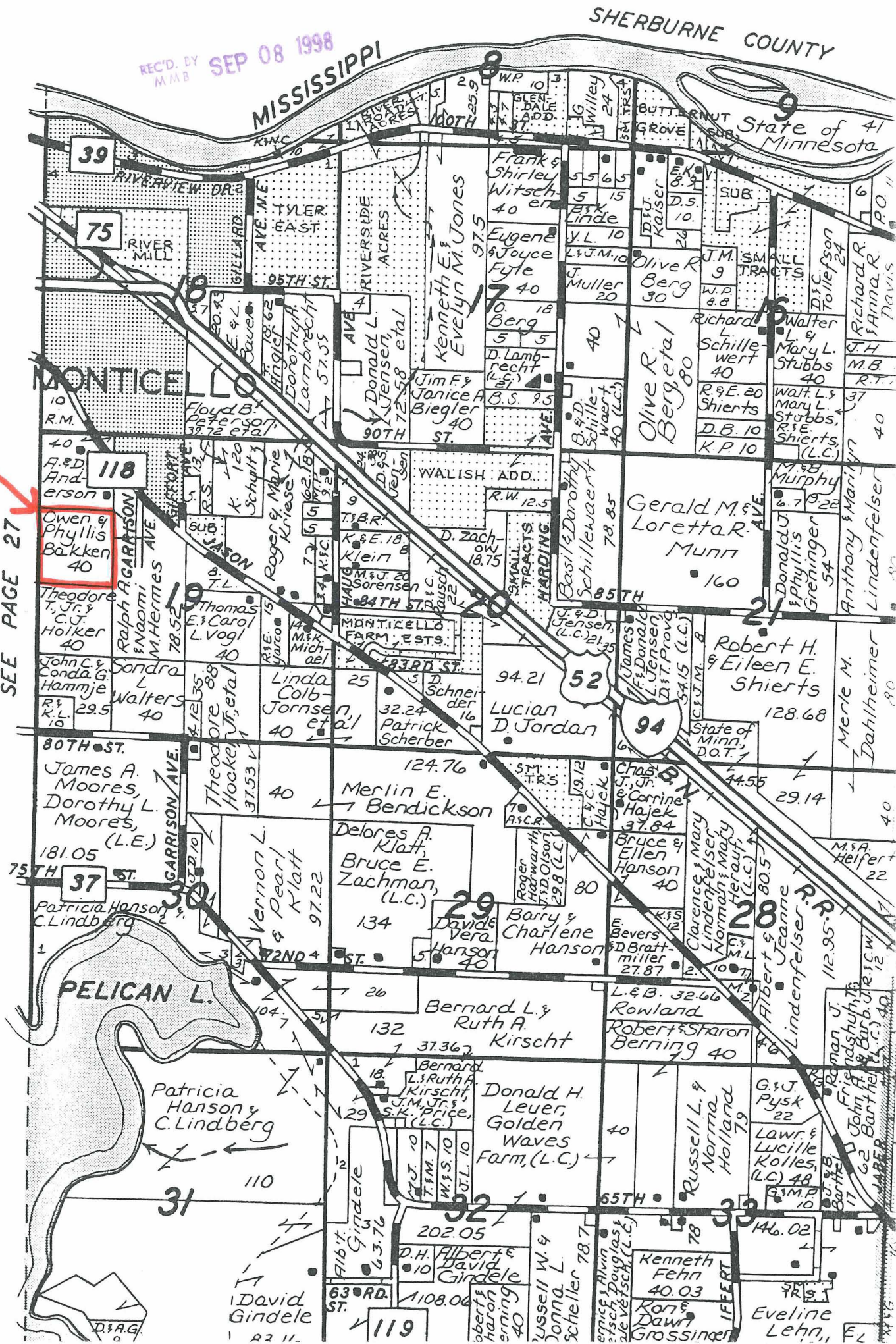

Town Clerk

SHERBURNE COUNTY

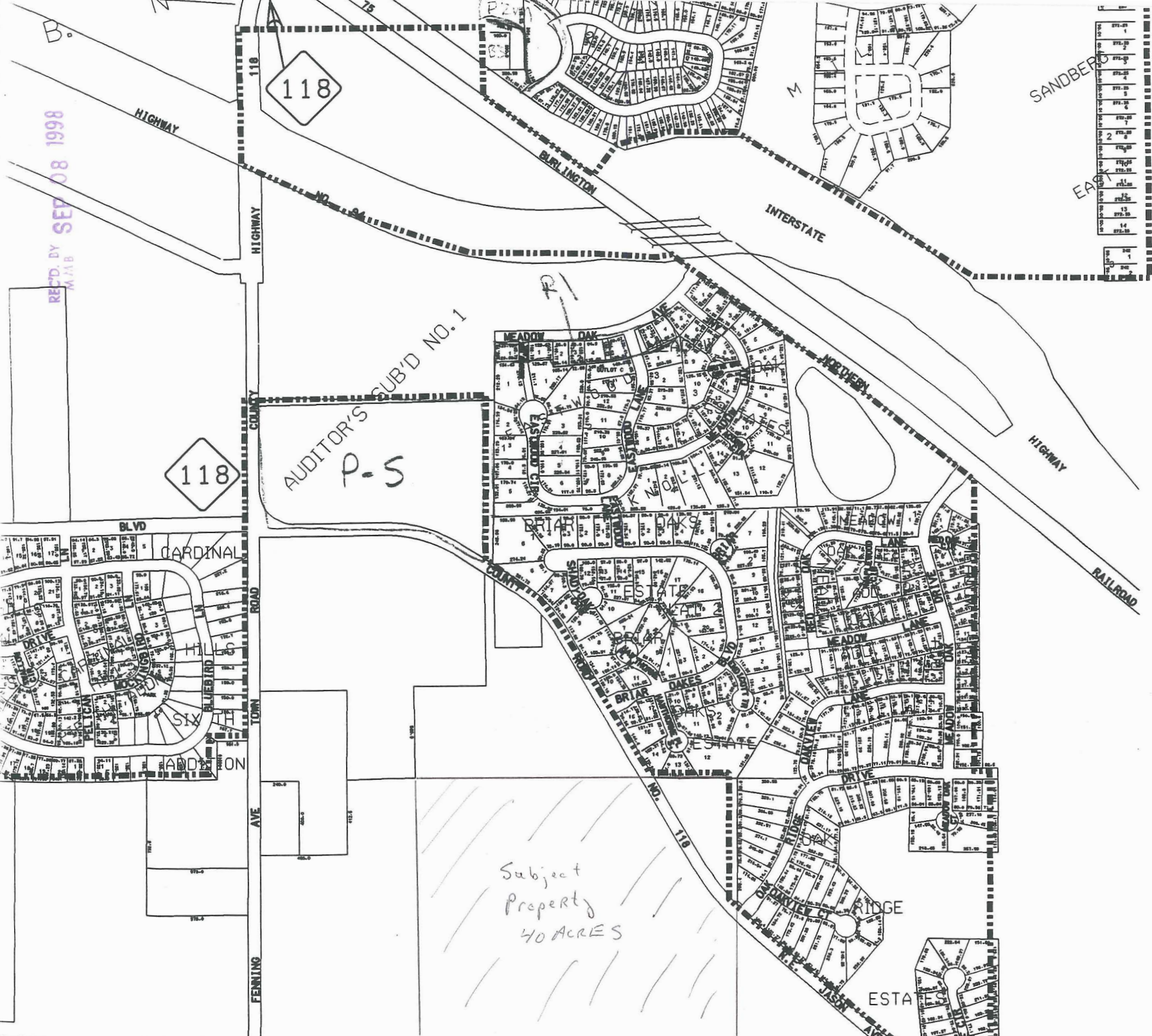
State of 41
Minnesota

***WILDWOOD
RIDGE**

SEE PAGE 27



REC'D. BY SEP 08 1998
M.A.B.



1	271.00
2	271.20
3	271.20
4	271.20
5	271.20
6	271.20
7	271.20
8	271.20
9	271.20
10	271.20
11	271.20
12	271.20
13	271.20
14	271.20
15	271.20
16	271.20
17	271.20
18	271.20
19	271.20
20	271.20
21	271.20
22	271.20
23	271.20
24	271.20
25	271.20
26	271.20
27	271.20
28	271.20
29	271.20
30	271.20
31	271.20
32	271.20
33	271.20
34	271.20
35	271.20
36	271.20
37	271.20
38	271.20
39	271.20
40	271.20
41	271.20
42	271.20
43	271.20
44	271.20
45	271.20
46	271.20
47	271.20
48	271.20
49	271.20
50	271.20
51	271.20
52	271.20
53	271.20
54	271.20
55	271.20
56	271.20
57	271.20
58	271.20
59	271.20
60	271.20
61	271.20
62	271.20
63	271.20
64	271.20
65	271.20
66	271.20
67	271.20
68	271.20
69	271.20
70	271.20
71	271.20
72	271.20
73	271.20
74	271.20
75	271.20
76	271.20
77	271.20
78	271.20
79	271.20
80	271.20
81	271.20
82	271.20
83	271.20
84	271.20
85	271.20
86	271.20
87	271.20
88	271.20
89	271.20
90	271.20
91	271.20
92	271.20
93	271.20
94	271.20
95	271.20
96	271.20
97	271.20
98	271.20
99	271.20
100	271.20

WILDWOOD RIDGE

REC'D. BY
MAD SEP 08 1998

