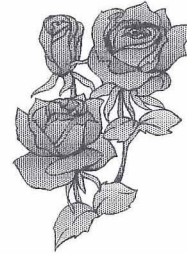


REC'D. BY
MMR NOV 19 1996

CITY OF ROSE CREEK
P.O. BOX 236
ROSE CREEK, MN 55970



RESOLUTION # 17-1996

JOINT RESOLUTION FOR ORDERLY ANNEXATION

***IN THE MATTER OF THE JOINT RESOLUTION OF THE CITY OF
ROSE CREEK AND WINDOM TOWNSHIP DESIGNATING AN
UNINCORPORATED AREA AS IN NEED OF ORDERLY ANNEXATION
AND CONFERRING JURISDICTION OVER SAID AREA TO THE
MINNESOTA MUNICIPAL BOARD PURSUANT TO M.S. 414.0325.***

The City of Rose Creek and Windom Township hereby jointly agree to the following:

1. That the following described area in Windom Township is subject to orderly annexation pursuant to Minnesota Statutes 414.0325, and the parties hereto designate this are for orderly annexation, to wit:

- SECTION - 36 TOWNSHIP - 102 RANGE - 17
NE 1/4, NW 1/4, NE OF HIGHWAY 56
23.37 ACRES OF LAND

- SECTION - 25 TOWNSHIP - 102 RANGE - 17
SE 1/4, SW 1/4
36 ACRES OF LAND

2. That the Town Board of Windom Township, and the City Council of the City of Rose Creek, upon passage and adoption of this resolution and upon the acceptance by the Municipal Board, confer jurisdiction upon the Municipal Board over the various provisions contained in this Agreement.

REC'D. BY NOV 19 1996
M M R

Page Two

3. Both Township and the City of Rose Creek agree that no alteration of the stated boundaries of this agreement is appropriate. Furthermore, each party agrees that no consideration by the Municipal Board is necessary. Upon receipt of this resolution, passed and adopted by each party, the Municipal Board may review and comment, but shall, within thirty (30) days, order the annexation in accordance with the terms of this joint resolution.

APPROVED BY THE CITY OF ROSE CREEK THIS 3rd DAY OF October, 1996.

CITY OF ROSE CREEK

BY: Kent Ullwelling
MAYOR

BY: James Nelson
CITY CLERK

APPROVED BY THE WINDOM TOWNSHIP BOARD THIS
9 DAY OF October, 1996.

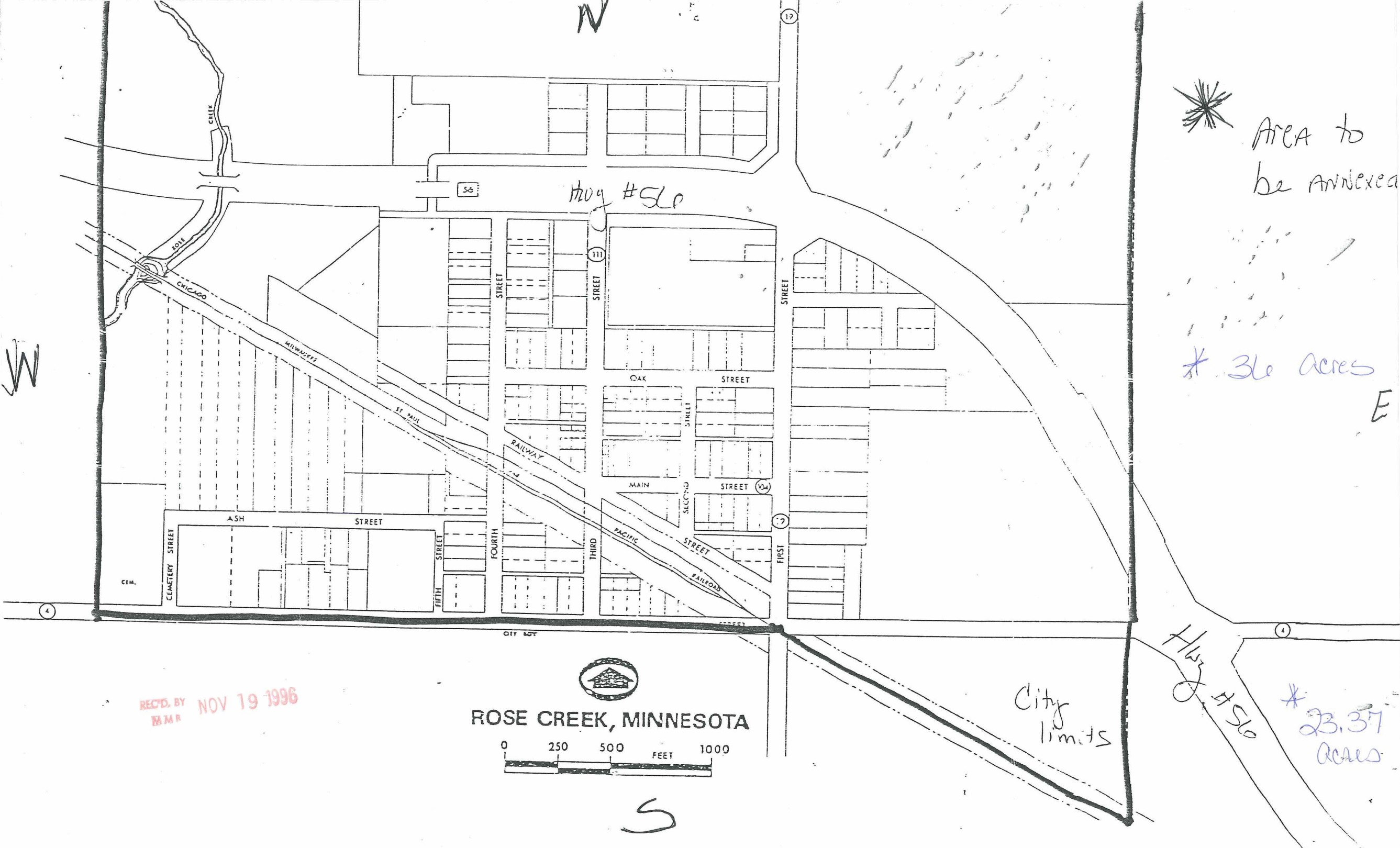
WINDOM TOWNSHIP

BY: Tom Verdorn
TOWNSHIP BOARD CHAIR

BY: Jeray Heard
TOWNSHIP BOARD CLERK

(SEAL)
CITY OF ROSE CREEK

ATTEST:



* Area to be annexed

* 36 Acres

E

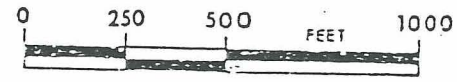
Hwy #50

* 23.37 Acres

City limits

REC'D. BY NOV 19 1996

ROSE CREEK, MINNESOTA



S