

REC'D. BY FEB 29 2000
MMB

RESOLUTION OF THE CITY OF MANKATO APPROVING ANNEXATION PER JOINT
ORDERLY ANNEXATION AGREEMENT WITH MANKATO TOWNSHIP

WHEREAS, a petition has been submitted by the City of Mankato, owner of property located in Sections 16 and 17, Township 108 North, Range 26 West, requesting that said property on the petition be annexed to the City of Mankato; and

WHEREAS, the annexation of such property will clarify the transportation jurisdiction;
and

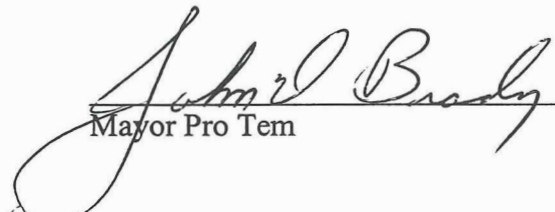
WHEREAS, there are no residents living on said property; and

WHEREAS, the Council of the City of Mankato finds that it is in the best interest of the City to support such annexation.

NOW, THEREFORE, BE IT RESOLVED, that the City Council of Mankato, Minnesota, hereby states that the City has no objection to the annexation of Hoffman Road Subdivision.

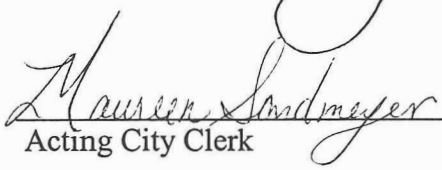
This resolution shall become effective immediately upon its passage and without publication.

Passed this 10th day of January, 2000.



Mayor Pro Tem

ATTEST:



Acting City Clerk

That part of Hoffman Road which is not within the corporate limits between the Easterly right-of-way line of Victory Drive and the Westerly right-of-line of Highway 22 Subdivision located in the South Half of Section 17 and the South Half of Section 16 all in Township 108 North, Range 26 West, Blue Earth County, Minnesota.

REC'D. BY MMB FEB 29 2000

TO: Minnesota Planning
Municipal Boundary Adjustments
300 Centennial Office Building
658 Cedar Street
St. Paul, MN 55155

Re: Orderly Annexation Petition: City of Mankato – Hoffman Road Subdivision

Proposed Annexation to the City of Mankato

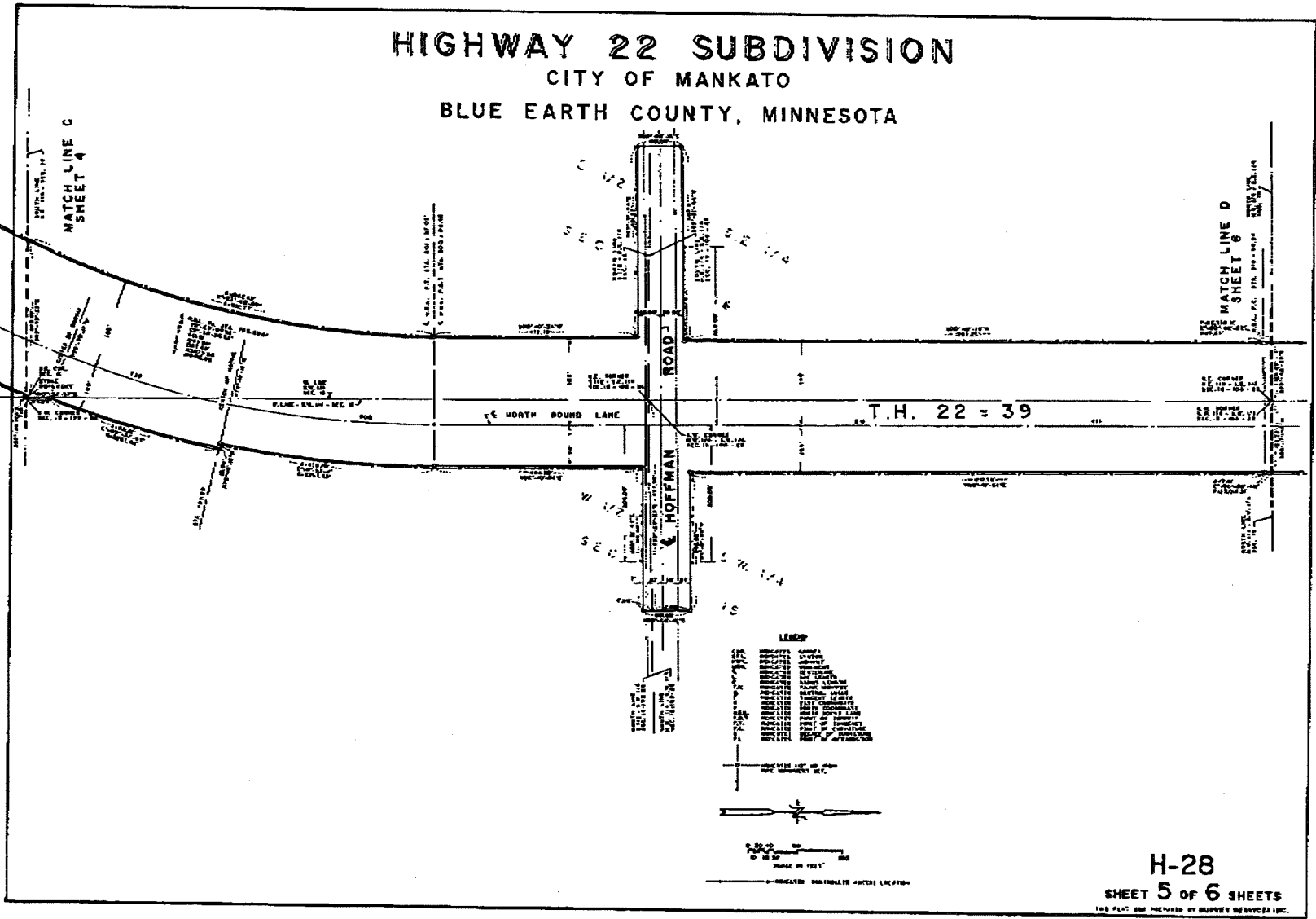
Ladies and Gentlemen:

The Town Board of Mankato Township, Blue Earth County, pursuant to a resolution duly adopted by the town board on January 18, 2000, hereby states that Mankato Township has no objection to the annexation of the following described land to the City of Mankato per M.S. 414.0325 and the Joint Resolution for Orderly Annexation between the City of Mankato and Mankato Township.

Hoffman Road Subdivision

Date 1-28-00

Signature *David S. Fogal*
Clerk



HOFFMAN ROAD SUBDIVISION

BLUE EARTH COUNTY, MINNESOTA

APPROVALS

According to Minnesota Statutes Chapter 160.05, DEDICATION OF ROADS, and Chapter 505.1792, STREETS, ROADS, HIGHWAYS AND RIGHTS-OF-WAY, the Blue Earth County Board of Commissioners and the City of Mankato are hereby designating the definite location of County Road No. 54 (Hoffman Road) between the Easterly right-of-way line of Victory Drive and the Westerly right-of-way line of Highway 22 Subdivision located in the East Half of the Southeast of Section 17 and the South Half of Section 16 all in Township 108 North Range 26 West, Blue Earth County, Minnesota, as now established; and have named said platted area **HOFFMAN ROAD SUBDIVISION**.

Be it known on this 17th day of December, 1991, the Blue Earth County Board of Commissioners did duly approve this plat.
Colleen Anderson Chairperson
Paul Tur County Administrator

Certified by Alan Farberg Registration No.: 1477a Date: 24 Dec 1991
County Highway Engineer

Reviewed by the Planning Commission of the City of Mankato on this, the 23rd day of October, 1991.
Malda S. Fairburn Chair-person of the Planning Commission
Ray P. Zost Secretary of the Planning Commission

Approved by the City Council of the City of Mankato on this 12th day of NOVEMBER, 1991.
Steve T. Christ Mayor
[Signature] City Manager

SURVEYORS CERTIFICATE

I hereby certify that this plat was prepared by me or under my direct supervision and that I am a duly Registered Land Surveyor under the laws of the State of Minnesota, that this plat meets the requirements of Minnesota Statutes Chapter 160.085 and Chapter 505.1792; that all measurements are correctly shown on this plat, and that the right-of-way boundary lines are correctly designated on this plat.

Bradley C. Evans Registration No. 13114 Date: DECEMBER 23, 1991

On this the 23rd day of December, 1991, before me a Notary Public in and for said County, appeared Bradley C. Evans, and being duly sworn did say that he executed the foregoing instrument.

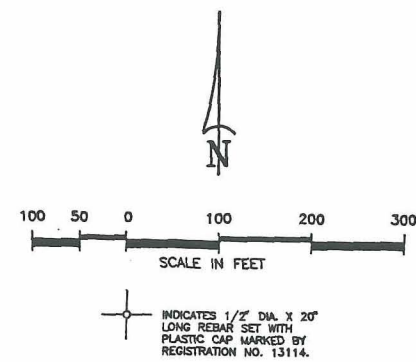
Warren P. Smith Notary Public
WARREN P. SMITH
NOTARY PUBLIC - MINNESOTA
BLUE EARTH COUNTY
MY COMMISSION EXPIRES 4-30-97

COUNTY RECORDER

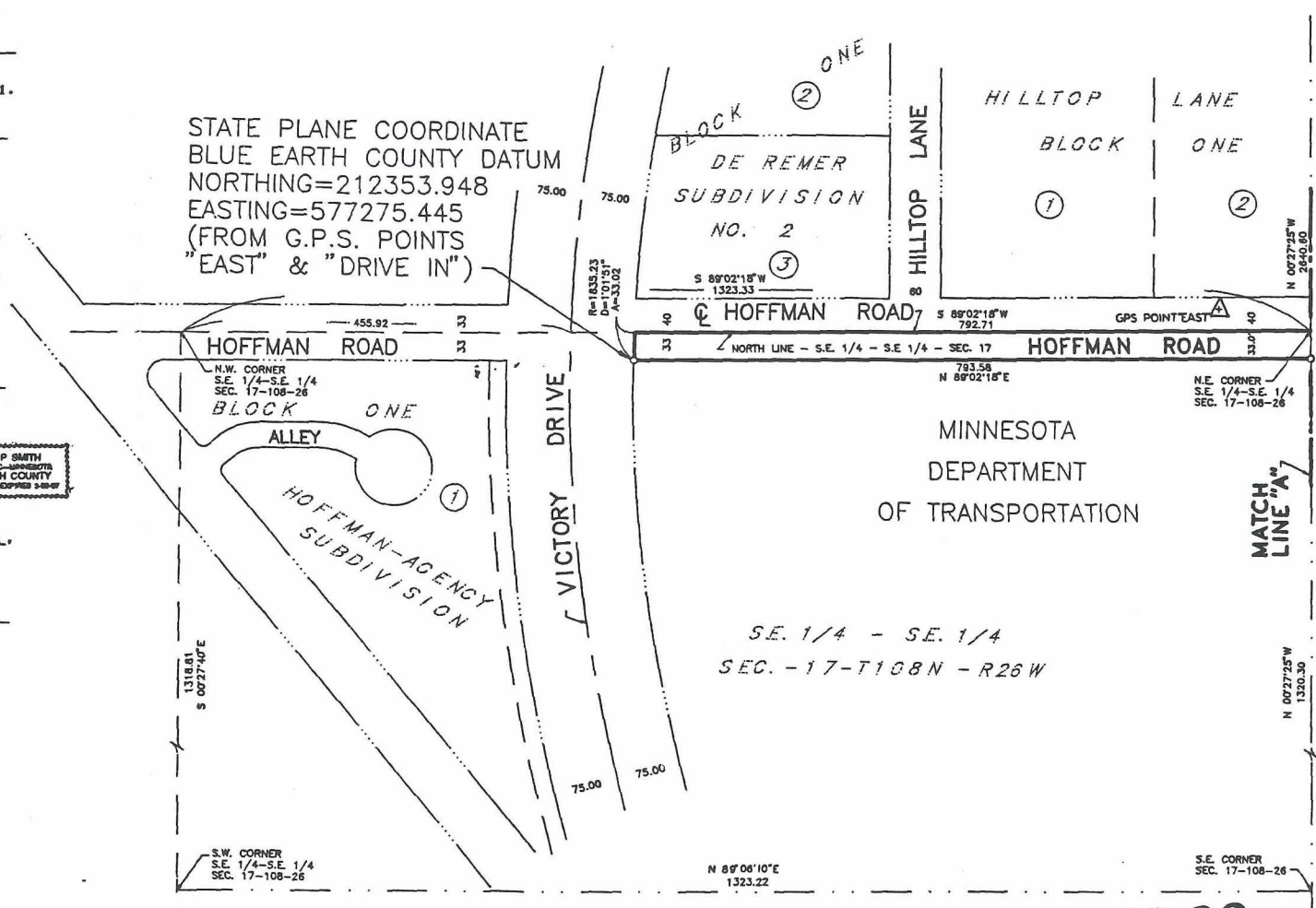
I hereby certify that this instrument was filed in my office for record on this 30th day of December, 1991, at 4:45 o'clock, P.M., and that it was duly recorded in E of Plats, Number 42-43

E. William James
County Recorder
Blue Earth County, MN.

OFFICE OF COUNTY RECORDER,
BLUE EARTH COUNTY, MINNESOTA
Hereby Certify, That I have carefully compared the within copy of
Plat of Hoffman Road Subdivision
with the original, which was filed in this office for record this 30th
day of December, A.D., 1991, at 4:45 o'clock P.M.
and find the same to be a true and correct copy thereof.
E. William James
County Recorder
Deput.



STATE PLANE COORDINATE
BLUE EARTH COUNTY DATUM
NORTHING=212353.948
EASTING=577275.448
(FROM G.P.S. POINTS
"EAST" & "DRIVE IN")



SEE SHEET 2 OF 3 SHEETS

MATCH LINE "A"

H-32

SHEET 1 OF 3 SHEETS

THIS PLAT WAS PREPARED BY SURVEY SERVICES, INC.

COPY

HOFFMAN ROAD SUBDIVISION

BLUE EARTH COUNTY, MINNESOTA

REC'D. BY FEB 29 2000
M.A.B.

W. 1/4 CORNER
SEC. 16-108-26

CENTER
SEC. 16-108-26

N.W. 1/4 - S.W. 1/4
SEC. - 16 - T108N - R26W

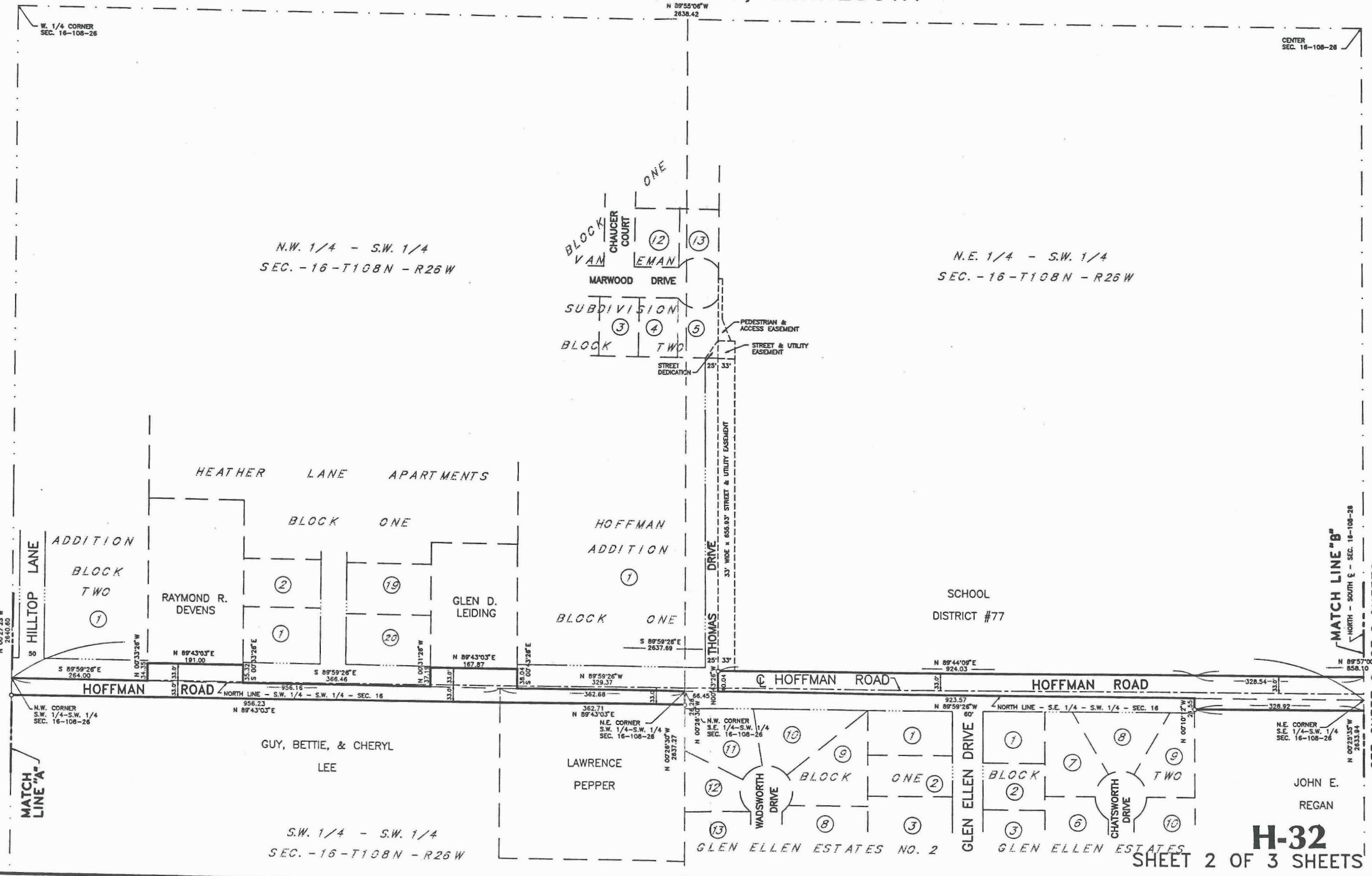
N.E. 1/4 - S.W. 1/4
SEC. - 16 - T108N - R26W

SEE SHEET 1 OF 3 SHEETS

SEE SHEET 3 OF 3 SHEETS

MATCH LINE "A"

MATCH LINE "B"



S.W. 1/4 - S.W. 1/4
SEC. - 16 - T108N - R26W

H-32

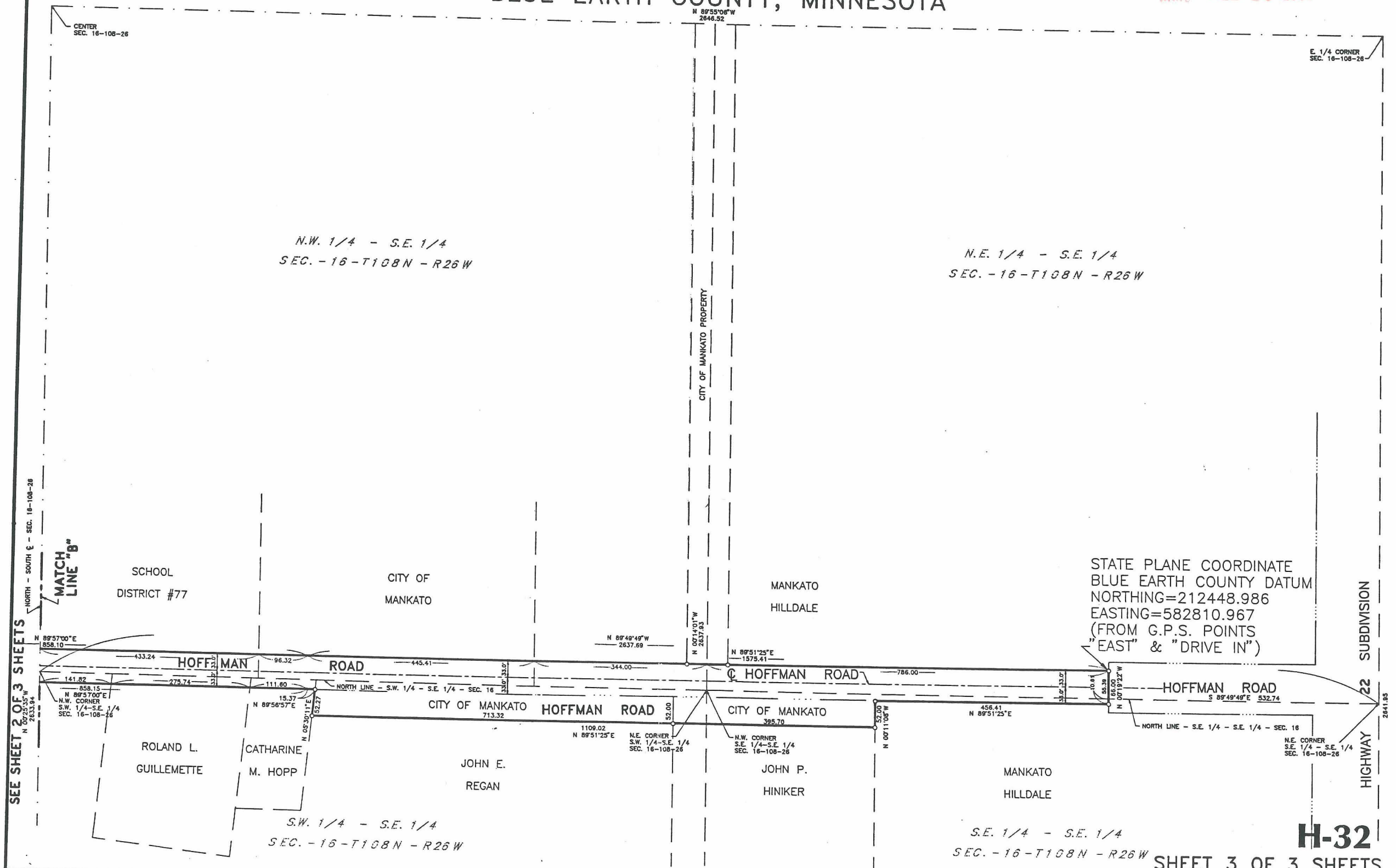
SHEET 2 OF 3 SHEETS

THIS PLAT WAS PREPARED BY SURVEY SERVICES, INC.

HOFFMAN ROAD SUBDIVISION

BLUE EARTH COUNTY, MINNESOTA

REC'D. BY FEB 29 2000
MMD



STATE PLANE COORDINATE
BLUE EARTH COUNTY DATUM
NORTHING=212448.986
EASTING=582810.967
(FROM G.P.S. POINTS
"EAST" & "DRIVE IN")

H-32

SHEET 3 OF 3 SHEETS

THIS PLAT WAS PREPARED BY SURVEY SERVICES, INC.

COPY