

June 1, 2023

Amber Duncanson, City Clerk  
Mapleton City Hall  
PO Box 366  
Mapleton, MN 56065-0366

a.duncanson@mapletonmn.gov  
and United States Mail

Gail Jaeger, Township Clerk  
Mapleton Town Board  
11498 587<sup>th</sup> Ln  
Mapleton, MN 56065

gjjaeger56@yahoo.com  
and United States Mail

Re: OAH 71-0331-39112 (MBAU OA-1857-1 Mapleton/Mapleton Township)  
Joint Resolution 12-03-23 (Kaduce Annexation)


Dear Ms. Duncanson and Ms. Jaeger:

On March 27, 2023, the Office of Administrative Hearings received, from the City of Mapleton, a joint resolution signed by the City of Mapleton and the Mapleton Town Board (Resolution 12-03-23) for the annexation of certain real property from Mapleton Township pursuant to Minn. Stat. § 414.0325 (2022).

After extensive research, the Corporate Data Unit Lead of the Minnesota Department of Transportation has provided information, dated May 19, 2023 (copy enclosed), that the area proposed for annexation is currently within the city limits of the City of Mapleton.

No further action will be taken on the above-referenced matter and the Office of Administrative Hearings' file in this matter is now closed. If you have any questions, please contact me at [star.holman@state.mn.us](mailto:star.holman@state.mn.us) or 651-361-7909.

Sincerely,



STARLENE J. HOLMAN  
MBAU Administrator

Enclosure

c: Michael Stalberger, Blue Earth County Taxpayer Services Director (enc.)  
(via [michael.stalberger@blueearthcountymn.gov](mailto:michael.stalberger@blueearthcountymn.gov) and United States Mail)  
Justin Roberts, MnDOT (via [Justin.Roberts@state.mn.us](mailto:Justin.Roberts@state.mn.us))  
Kathy Metzker, DNR (via [kathleen.metzker@dnr.state.mn.us](mailto:kathleen.metzker@dnr.state.mn.us))

May 19<sup>th</sup>, 2023

Corporate Data Unit – Minnesota Department of Transportation

To whom it may concern:

According to State of Minnesota records the area described in the initiating documents of Boundary Adjustment Filing Docket OA-1857-1 ([http://www.mba.state.mn.us/sites/default/files/MBA\\_docs/OA-1857-1\\_Initiating\\_Docs\\_and\\_Map.pdf](http://www.mba.state.mn.us/sites/default/files/MBA_docs/OA-1857-1_Initiating_Docs_and_Map.pdf)) is already within the city.

Attached on the following pages are pictures of records found in the Mapleton city folder within the corporate data records. These records show this area was in the city many years ago. A phone conversation between a past Corporate Data Unit employee and the county auditor recorded a detachment of a large area of land from the city in the southeast corner of town. This detached area was entirely southwest of the southwesterly right-of-way line of the railroad, leaving the railroad right-of-way still within the city.

Justin Roberts  
Corporate Data Unit Lead

OFFICE OF PROGRAM PLANNING  
 SERVICES & SUPPORT SECTION  
 ROAD INVENTORY UNIT  
 CHANGE IN MUNICIPAL DATA

- DISTRICT 7
- FILE
- FISCAL GROUP
- HIGHWAY PRIORITY & NEEDS SECTION
- ROAD LIFE GROUP
- STATE AID

MUNICIPALITY MAPLETON  
 COUNTY BLUE EARTH  
 EFFECTIVE DATE OF CHANGE \_\_\_\_\_  
 SOURCE OF DATA COUNTY AUDITOR'S OFFICE  
 DATE CHANGE RECEIVED 9-18-79  
 DATA SECURED BY L. A. M. By phone call

STATE DEMOGRAPHER

1116

- BOUNDARY CHANGE
- PLAT REVISIONS

Graphic Record

REMARKS: Detach. East 3/4, NW 1/4, of Sec. 3, T. 105 N., R. 26 W. sh. 2  
sh. 1 Detach. SW 1/4, Sec. 3, T. 105 N., R. 26 W. lying SW of  
R.R. R/W Line. ALSO, the NW 1/4, Sec. 10, T. 105 N.,  
R. 26 W. Lying SW of the R.R. R/W Line. 10-18-79  
J.E.P.

1 wsp as per Co Aud Office  
9-18-79 Lam

~~MAP OF  
 GOOD THUNDER  
 BLUE EARTH COUNT  
 POP. 489~~

Dist 7

When was that portion of the  
D-79-157  
E 3/4 of NW 1/4 of Sec 3 T105N R26W

D-79-158

SW 1/4 Sec 3 Twp 105N R 26W lying  
SW of RR R/W

NW 1/4 Sec 10 T105N R 26 lying  
SW of RR R/W Detached from  
Mapleton

1116

507 524 3492 City Clerk

507 625 3031 Co Aud

No dates available Taxed in  
Twp as per Co Aud Office  
9-18-79 Lam

of NW 1/4 of NW 1/4 Sec 10-105-20  
5000

OK (1111)  
9-18-79

~~MAP OF  
GOOD THUNDER  
BLUE EARTH COUNTY  
POP. 489~~

Mapleton

M-17  
1,083

Dist 7

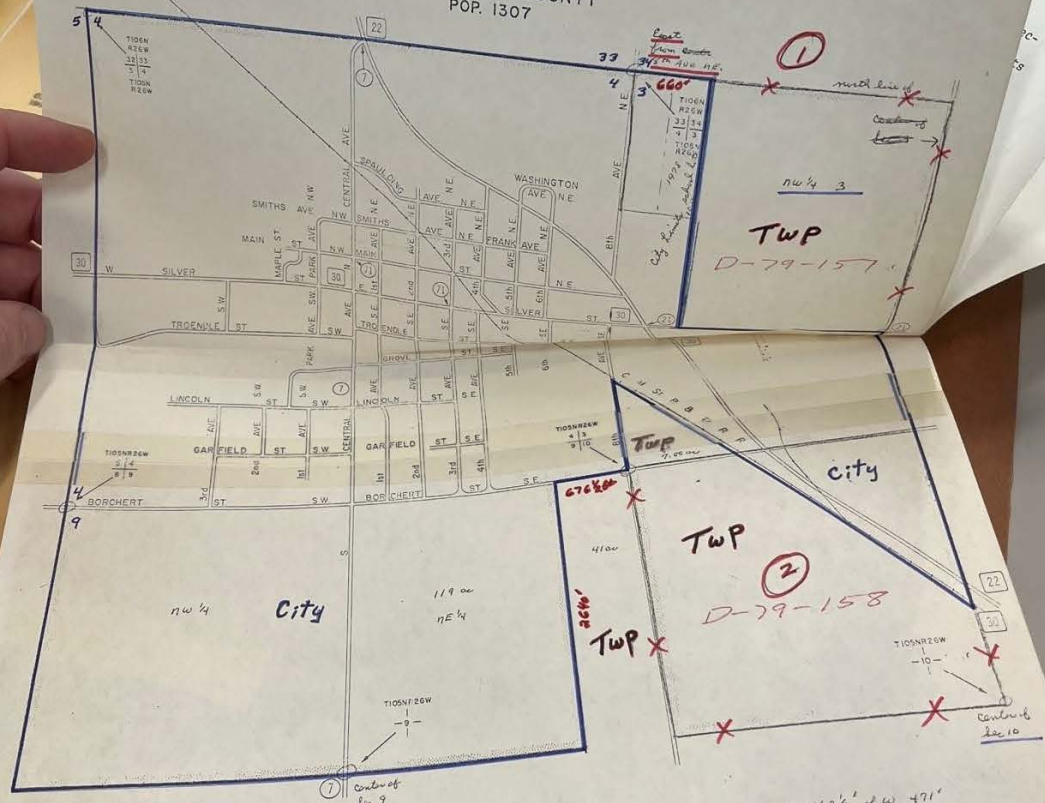
9/10/79 Received from Harold Johnson  
in Blue Earth Co. Assessor's  
Office

City limits  
inside Blue  
lines

displected  
23.02 ac  
in sec 33 10620

Base Map prepared by 1116  
Minn Dept. of Transportation  
12.18 ac  
in sec 34 10626

MAP OF  
MAPLETON  
BLUE EARTH COUNTY  
POP. 1307



~~MAP OF  
GOOD THUNDER  
BLUE EARTH COUNTY  
POP. 489~~

n 462 1/2' of w 471'  
of nw 1/4 of nw 4 sec 11-105-26  
5.00 ac

OK Full  
9-18-79