

City of St. Cloud Resolution No. 2004-8-204

City of Waite Park Resolution No. 08/16/04-1

**RESOLUTION FOR THE CONCURRENT DETACHMENT AND
ANNEXATION OF INCORPORATED LAND BY AND BETWEEN
THE CITY OF ST. CLOUD AND THE CITY OF WAITE PARK
(OUTLOT A, ANGUSHIRE GREENS PLAT 7)**

WHEREAS, Mary Weyrens Tasto, has requested the detachment of Outlot A, Angushire Greens Plat 7 from the City of St. Cloud and annexation of same to the City of Waite Park; and,

WHEREAS, Outlot A, Angushire Greens Plat 7, is occupied by a portion of the Angushire Par-3 Golf Course (.56 acres) and is presently located within the corporate limits of the City of St. Cloud;

WHEREAS, the remaining portion of the Angushire Par-3 Golf Course (20.14 acres) is located within the corporate limits of and is provided municipal services by the City of Waite Park; and,

WHEREAS, the property owner has requested the concurrent detachment and annexation to accommodate the redevelopment of Outlot A and the Par 3 golf course for residential use.

NOW, THEREFORE, BE IT JOINTLY RESOLVED AND AGREED BY THE COUNCIL OF THE CITY OF ST. CLOUD AND THE COUNCIL OF THE CITY OF WAITE PARK, MINNESOTA, THAT:

1. The subject property, legally described as Outlot A, Angushire Greens Plat 7, located within the City of St. Cloud is hereby detached from the City of St. Cloud and annexed to the City of Waite Park.
2. The parcel is shown on the map attached as Exhibit A.
3. Upon any subsequent development of Outlot A, Angushire Greens Plat 7 for non-park or non-recreational purpose, the property owner will contribute a cash payment in lieu of parkland to the City of St. Cloud in the amount of \$3,588.
4. Minnesota Planning Office of Strategic and Long Range Planning is hereby requested to order the concurrent detachment and annexation of the above described property.

REC'D BY
MMB

SEP 3 0 2004

Adopted this 2nd day of August, 2004, by the Council of the City of St. Cloud,
Minnesota.

Jim D. Ellenbeck
Mayor

Attest:

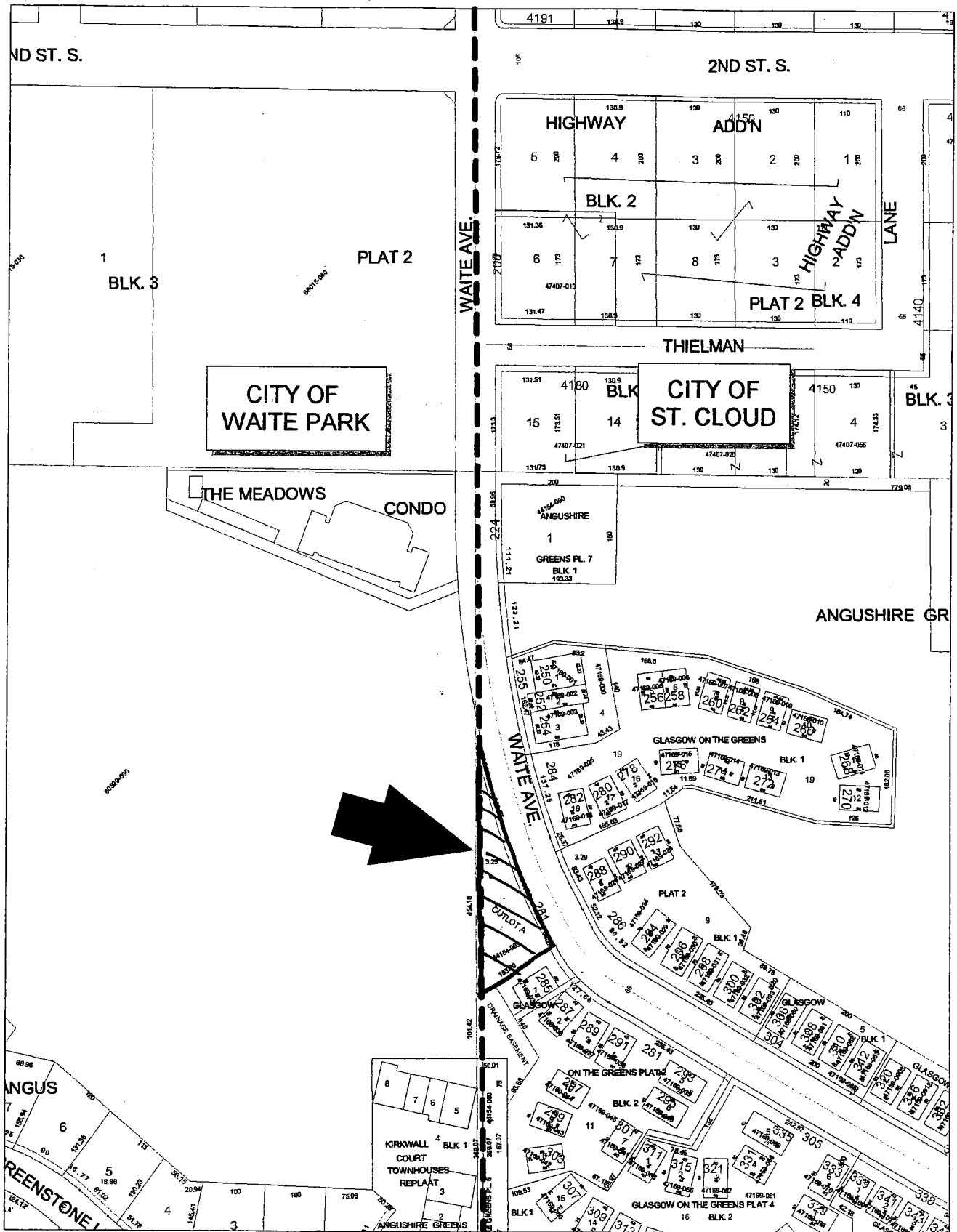
Angela Lyden
City Clerk

Adopted this 16 day of August, 2004, by the Council for the City of Waite
Park, Minnesota.

Carl R. Shultz
Mayor

Attest:

Strauna Johnson
City Clerk



CITY OF ST. CLOUD/ CITY OF WAITE PARK
 CONCURRENT DETACHMENT AND ANNEXATION
 OUTLOT A ANGUSHIRE GREENS PLAT 7
 GENERAL LOCATION MAP

