

**CITY OF OAKDALE
RESOLUTION NO. 2001-91**

**CITY OF LANDFALL
RESOLUTION NO. 2001-08**

**A JOINT RESOLUTION STIPULATING TO THE CONCURRENT DETACHMENT
AND ANNEXATION OF CERTAIN LANDS PURSUANT OT MINNESOTA STATUTES
CHAPTER 414**

RECITALS

WHEREAS, the original south corporate limits of the City of Oakdale (Oakdale) and the City of Woodbury were defined by the north right-of-way line of old Truck Highway 12; and

WHEREAS, the new I-94 freeway was constructed southerly of the old Trunk Highway 12 right-of-way and the old Trunk Highway 12 right-of-way became the north frontage road for I-94, which lies within the boundaries of the City of Woodbury (Woodbury); and

WHEREAS, the Minnesota Department of Transportation desires to turn back the north frontage road between Trunk Highway 120 and Inwood Avenue to the respective cities; and

WHEREAS, Oakdale has installed sewer, water and storm sewer in the road right-of-way of the north frontage road all currently located within Woodbury; and

WHEREAS, Landfall desires to detach and Oakdale desires to attach that portion of the north frontage road right of way along its southerly boundary; and

WHEREAS, Woodbury desires to detach and Oakdale desires to annex the north frontage road lying northerly of the northerly right-of-way of line I-94; and

WHEREAS, Landfall and Oakdale have entered into an agreement providing for Oakdale to permanently maintain one frontage road and right-of-way abutting the southerly boundary of Landfall; and

WHEREAS, Minnesota Statutes Chapter 414.016 provides that property in one municipality which abuts another municipality may be concurrently detached and annexed pursuant to the procedures set forth in said statute; and

WHEREAS, the legal description of the land proposed to be detached from Woodbury and annexed to Oakdale lies north and south of the new corporate boundary line described in Exhibit "A" attached hereto and made a part hereof.

NOW, THEREFORE, be it resolved by the City Council of the City of Oakdale, Washington County, Minnesota, as follows:

1. The City of Oakdale requests the State of Minnesota Office of Strategic and Long-Range Planning to approve the concurrent detachment and annexation of the property described in Exhibit "A" from the City of Woodbury and the City of Oakdale and the same described in Exhibit "B" from the City of Landfall to the City of Oakdale.

2. That said concurrent detachment and annexation would be in the best interests of both the Cities of Woodbury and Oakdale.

3. That a copy of this Resolution shall be forwarded to the State of Minnesota Office of Strategic and Long-Range Planning for review and approval.

WHEREUPON, said Resolution was declared duly passed and adopted and was signed by the Mayor and attested to by the City Administrator.

Passed by the City Council of the City of Oakdale, Washington County, Minnesota, this 10th day of July, 2001.

NOW THEREFORE BE IT RESOLVED by the City Council of the City of Landfall, Washington County, Minnesota as follows:

1. The City of Landfall requests the State of Minnesota Office of Strategic and Long-Range Planning to approve the concurrent detachment and annexation of the property described in Exhibit "B" from the City of Landfall to the City of Oakdale.

2. That said concurrent detachment and annexation would be in the best interests of both the Cities of Oakdale and Landfall.

3. That a copy of this Resolution shall be forwarded to the State of Minnesota Office of Strategic and Long-Range Planning for review and approval.

WHEREUPON, said Resolution was declared duly passed and adopted and was signed by the Mayor and attested to by the City Clerk.


Passed by the City Council of the City of Landfall, Washington County, Minnesota, this 11 day of July, 2001.

I, Susan Barry Deputy City Clerk
for the City of Oakdale, do hereby
certify that this is a true and
correct copy of Resolution 2001-91
which is on file in the office of
the City Clerk of the City of Oakdale
9-16-2001 Susan Barry

REC'D BY
M.M.B

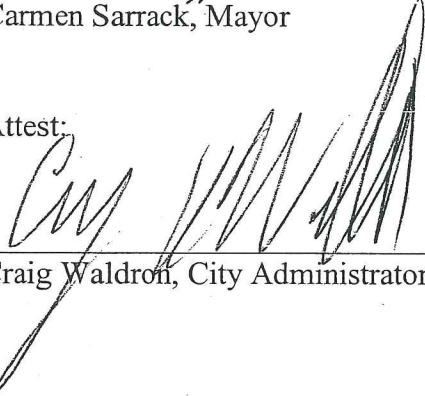
NOV 15 2002

CITY OF OAKDALE



Carmen Sarrack, Mayor

Attest:



Craig Waldron, City Administrator

CITY OF LANDFALL



John Blahna, Mayor

Attest:



Helen Hallis, Clerk

EXHIBIT A
TO
RESOLUTION NO. 2001- 91

REC'D BY
M M B

NOV 15 2002

D-3921
A-6786

All property north of the following described corporate boundary shall be within the City of Oakdale, and all property south of the following described corporate boundary shall be within the City of Woodbury:

Commencing at the southwest corner of Section 31, Township 29 North, Range 21 West, thence on an assumed azimuth of 359 degrees 51 minutes 25 seconds along the west line of said Section 31 a distance of 76.90 feet to the point of beginning of the line to be described; thence on an azimuth of 109 degrees 21 minutes 13 seconds a distance of 70.90 feet; thence deflect to the left along a tangential curve having a radius of 1226.21 feet, a delta angle of 19 degrees 18 minutes 22 seconds and a length of 413.17 feet; thence on an azimuth of 89 degrees 50 minutes 56 seconds a distance of 2005.15 feet; thence deflect to the left along a tangential curve having a radius of 2880.00 feet, a delta angle of 09 degrees 25 minutes 32 seconds and a length of 473.78 feet; thence on an azimuth of 80 degrees 25 minutes 24 seconds a distance of 129.38 feet; thence deflect to the right along a nontangential curve having a radius of 2846.74 feet, a delta angle of 05 degrees 03 minutes 21 seconds, a length of 251.21 feet, a chord azimuth of 82 degrees 46 minutes 47 seconds and a chord length of 251.12 feet; thence on an azimuth 89 degrees 52 minutes 10 seconds a distance of 1893.80 feet to a point on the east line of said Section 31, distant 75.00 feet north of the southeast corner thereof; thence on an azimuth of 89 degrees 33 minutes 31 seconds a distance of 2635.52 feet to a point on the North-South quarter line of Section 32, Township 29 North, Range 21 West, distant 75.00 feet north of the south quarter corner thereof; thence along said quarter line on an azimuth of 00 degree 09 minutes 21 seconds a distance of 10.00 feet; thence on an azimuth of 89 degrees 20 minutes 24 seconds a distance of 148.95 feet; thence on an azimuth of 93 degrees 14 minutes 23 seconds a distance of 120.33 feet; thence on an azimuth of 90 degrees 49 minutes 00 seconds a distance of 751.05 feet; thence on an azimuth of 93 degrees 17 minutes 21 seconds a distance of 450.81 feet; thence on an azimuth of 91 degrees 59 minutes 36 seconds a distance of 491.94; thence on an azimuth of 90 degrees 16 minutes 47 seconds a distance of 221.47 to a point on the south line of said Section 32; thence along the south line of said Section 32 on an azimuth of 89 degrees 20 minutes 24 seconds a distance of 451.07 feet to the southeast corner of said Section 32; thence easterly along the south line of Section 33, Township 29 North, Range 21 West on an azimuth of 89 degrees 42 minutes 41 seconds a distance of 2140.42 feet; thence on an azimuth of 84 degrees 00 minutes 21 seconds a distance of 502.94 feet to a point on the North-South quarter line of said Section 33, distant 50.00 feet north of the south quarter corner thereof and there terminating.

EXHIBIT B
TO
RESOLUTION NO. 2001-_____

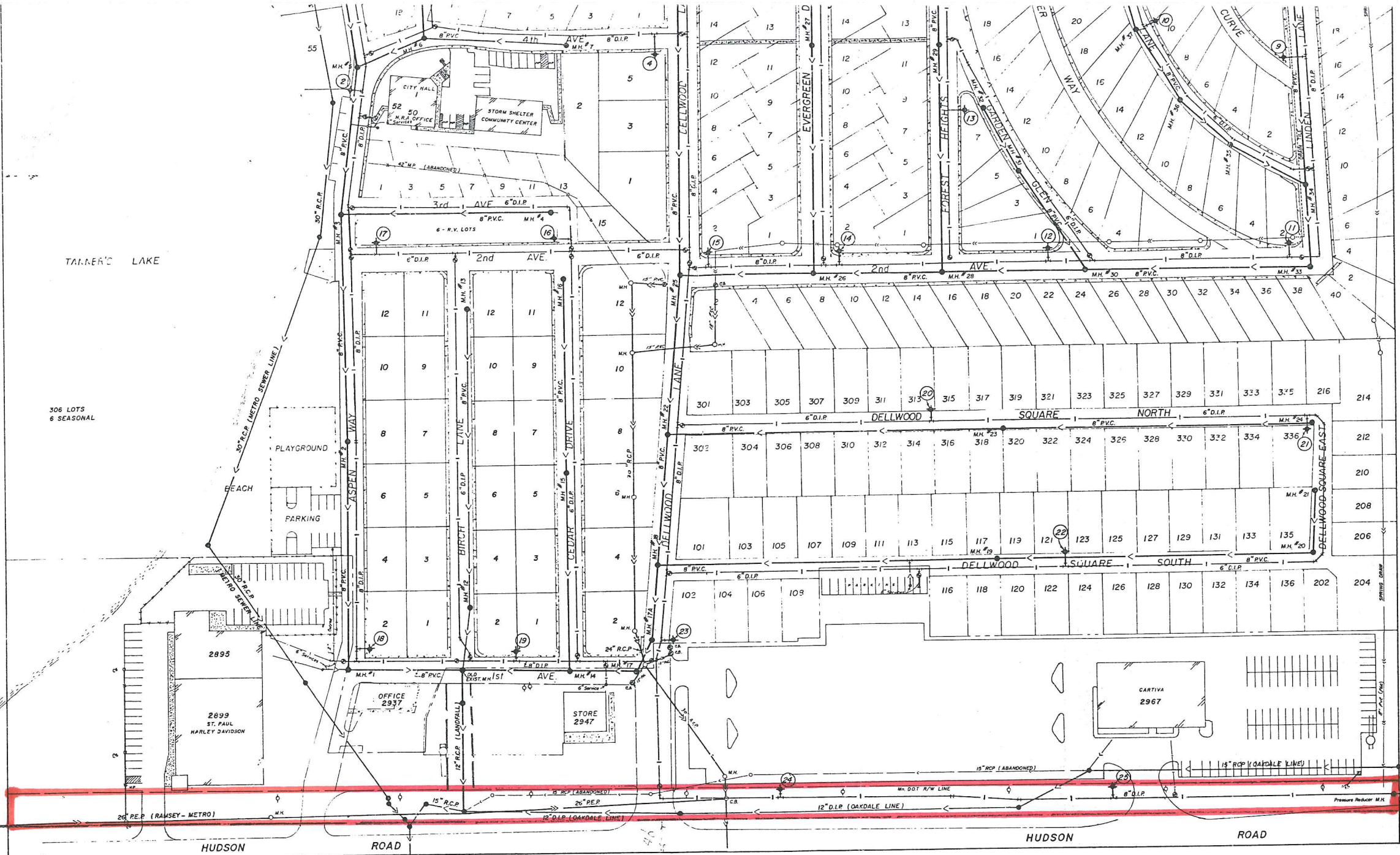
REC'D BY
MMB

NOV 15 2002

The South 75 feet of the Southeast Quarter of the Southwest Quarter; and the South 75 feet of the West 10 acres of the Southwest Quarter of the Southeast Quarter, all in Section 31, Township 29 North, Range 21 West, Washington County, Minnesota.

D-393/A-6787

RECD BY MMB NOV 15 2002



TANNER'S LAKE

306 LOTS
6 SEASONAL

HUDSON

ROAD

HUDSON

ROAD

CARL W. PETERSON & ASSOC. INC.
Oakdale, Minnesota
(612) 735-7606

DATE: 11/15/96