

RESOLUTION NO. 00-199

RESOLUTION AUTHORIZING THE ANNEXATION OF CERTAIN PROPERTY TO ADJUST
THE BOUNDARY BETWEEN THE CITY OF CORCORAN AND THE CITY OF MAPLE
GROVE

WHEREAS, the owners of Lot 14, Block 1, Appaloosa Woods 3rd Addition, located in the City of Corcoran wish to connect to the Maple Grove water and sewer systems; and

WHEREAS, the area in question is accessible only by passing through Maple Grove; and

WHEREAS, the needed services cannot be provided by the City of Corcoran at this time; and

WHEREAS, the cities of Corcoran and Maple Grove are both in favor of the detachment of said property from Corcoran and annexation to Maple Grove; and

WHEREAS, Exhibit "A" to this resolution shows the existing municipal boundary between the Cities of Corcoran and Maple Grove in the Appaloosa Woods subdivision; and

WHEREAS, Exhibit "B" to this resolution identifies the parcel to be detached and annexed;
and

WHEREAS, Exhibit "C" depicts the new proposed municipal boundary between the Cities of Corcoran and Maple Grove after the boundary adjustment; and

WHEREAS, the City Council of the City of Maple Grove deems it desirable and in the best interest of the City to adjust the boundary between the City of Corcoran and the City of Maple Grove.

NOW, THEREFORE, BE IT RESOLVED by the City Council of the City of Maple Grove, Minnesota that it desires to annex the area described in Exhibit "B"; and

BE IT FURTHER RESOLVED that the City staff is authorized to request the State of Minnesota Municipal Board to issue an order implementing the annexation of the area described in Exhibit "B" and that the Mayor and City Clerk are hereby authorized to execute any documents necessary to accomplish the annexation proceedings.

Adopted by the City Council on this 4th day of December, 2000.

The motion for the adoption of the foregoing resolution was made by Councilmember Sargent, seconded by Councilmember Jaeger, and upon vote being duly taken thereon, the following voted in favor thereof: Mayor Burlingame, Councilmembers Jaeger, Sargent and Steffenson

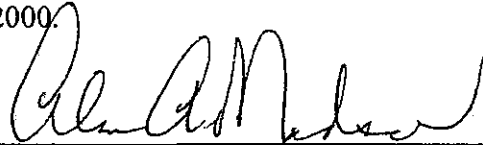
and the following voted against the same: none

and the following were absent: Councilmember Koski

whereupon said resolution was declared duly passed and adopted.

STATE OF MINNESOTA)
COUNTY OF HENNEPIN) SS.
CITY OF MAPLE GROVE)

I, the undersigned, being the duly qualified and acting Clerk of the City of Maple Grove, Hennepin County, Minnesota, a Minnesota municipal corporation, hereby certify that the above and foregoing Resolution No. 00-199 is a true and correct copy of the Resolution as adopted by the City Council on the 4th day of December, 2000.



Alan A. Madsen, City Clerk

*City of Corcoran
County of Hennepin
State of Minnesota*

CITY OF CORCORAN

RESOLUTION NO. 2000-82

RESOLUTION AUTHORIZING THE DETACHMENT AND ANNEXATION OF CERTAIN
PROPERTY TO ADJUST THE BOUNDARY BETWEEN THE CITY OF CORCORAN AND THE
CITY OF MAPLE GROVE

WHEREAS, the owners of certain property located in the City of Corcoran wish to attach to the Maple Grove water and sewer systems; and

WHEREAS, the area in question is accessible only by passing through Maple Grove; and

WHEREAS, the land is contiguous to the City of Maple Grove; and

WHEREAS, the needed services cannot be provided by the City of Corcoran; and

WHEREAS, the cities of Corcoran and Maple Grove are both in favor of the detachment of said property from Corcoran and annexation to Maple Grove; and

WHEREAS, Exhibit "A" to this resolution shows the existing municipal boundary between the Cities of Corcoran and Maple Grove in the Appaloosa Woods subdivision; and

WHEREAS, Exhibit "B" to this resolution identifies the parcel to be detached and annexed; and

WHEREAS, Exhibit "C" depicts the new proposed municipal boundary between the Cities of Corcoran and Maple Grove after the boundary adjustment; and

WHEREAS, the City Council of the City of Corcoran deems it desirable and in the best interest of the City to adjust the boundary between the City of Corcoran and the City of Maple Grove.

NOW, THEREFORE, BE IT RESOLVED by the City Council of the City of Corcoran, Minnesota, that it desires to detach the area described in Exhibit "B"; and

BE IT FURTHER RESOLVED that the City staff is authorized to request the State of Minnesota Municipal Board to issue an order implementing the detachment of the area described in Exhibit "B" and that the Mayor and City Clerk are hereby authorized to execute any documents necessary to accomplish the detachment proceedings.

Adopted by the City Council on this 11th day of December 2000.

The motion for the adoption of the foregoing resolution was made by Council member Thomas seconded by Council member Gmach, and upon vote being duly taken thereon, the following voted in favor thereof: Guenther, Thomas, Gmach, Bucher, and Lindsley.

and the following voted against the same: None

and the following were absent: None

whereupon said resolution was declared duly passed and adopted.

STATE OF MINNESOTA)
COUNTY OF HENNEPIN) SS.
CITY OF CORCORAN)

I, the undersigned, being the duly qualified City Administrator of the City of Corcoran, Hennepin County, Minnesota, hereby certify that the above and foregoing Resolution No. 2000-82 is a true and correct copy of the Resolution as adopted by the City Council of the City of Corcoran on the Corcoran day of December 11, 2000.

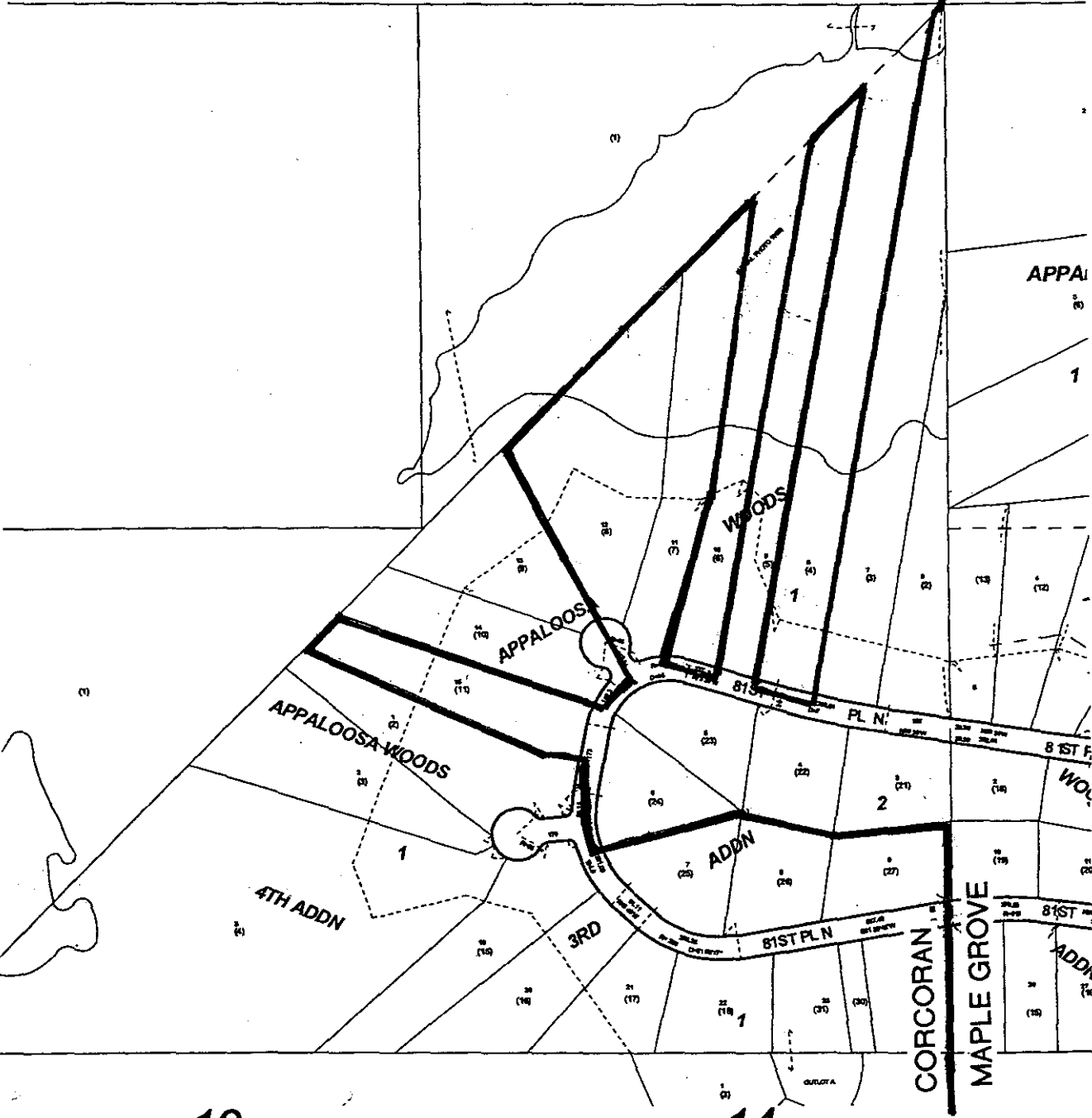


Roberta J. Colotti, City Administrator

EXHIBIT A

12

11



13

14

**EXISTING BOUNDARY BETWEEN
CORCORAN AND MAPLE GROVE**

REC'D. BY JAN 09 2001
M A B

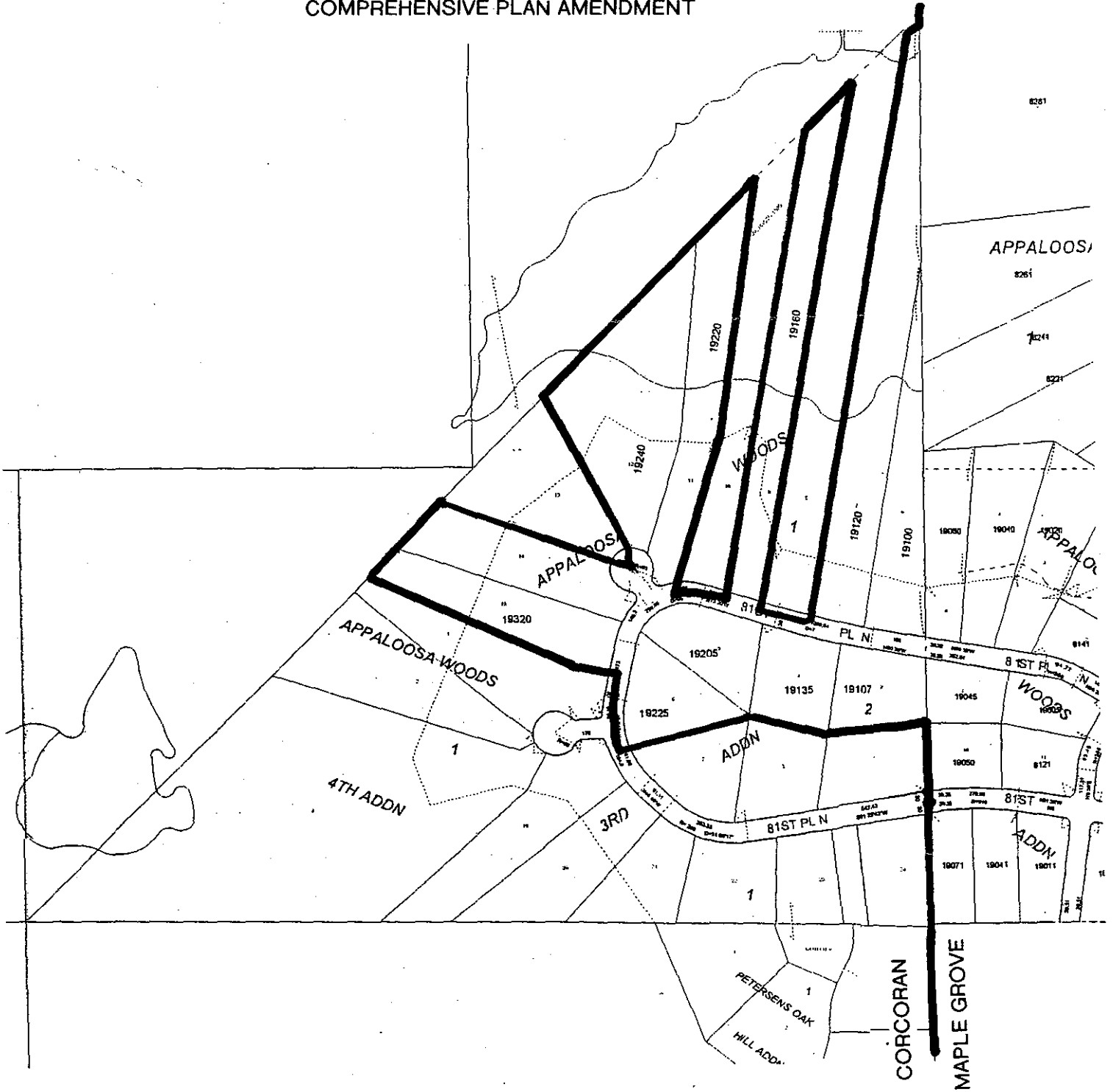
EXHIBIT "B"

Corcoran to Maple Grove Annexation
Property Description

Commencing at the southwest corner of Lot 14, Block 1, Appaloosa Woods 3rd Addition, which is common with the northwest corner of Lot 15, Block 1, Appaloosa Woods 3rd Addition; thence southeasterly along the south line of said Lot 14 to the centerline of 81st Place No.; thence northeasterly along said centerline to the intersection of 81st Place North and the southeasterly extension of the centerline of a cul-de-sac to the northwest; thence northwest along said southeasterly extension and the cul-de-sac centerline to the center point of said cul-de-sac; thence northwesterly to the northeast corner of said Lot 14; thence northwesterly along the northerly property line of Lot 14, Block 1 to the northwest corner of said Lot 14; thence southwesterly to the point of beginning.

APPALOOSA WOODS ANNEXATION & MUSA EXPANSION

COMPREHENSIVE PLAN AMENDMENT



**PROPOSED BOUNDARY BETWEEN
CORCORAN AND MAPLE GROVE**

REC'D. BY JAN 09 2001
MMB

