

CITY OF INVER GROVE HEIGHTS RESOLUTION NO. 2000-061

CITY OF SOUTH ST. PAUL RESOLUTION NO. 2000-126

**JOINT RESOLUTION REQUESTING CONCURRENT
DETACHMENT FROM SOUTH ST. PAUL AND
ANNEXATION TO INVER GROVE HEIGHTS
OF THAT PORTION OF LOT 6, BLOCK 1,
DAWN WAY RIDGE, LOCATED WITHIN THE
CITY OF SOUTH ST. PAUL
PURSUANT TO MINN. STAT. § 414.061**

WHEREAS, the Danner Family Limited Partnership, a Minnesota limited partnership, is the Owner of Lots 1 through 5, Block 1, and a portion of Lot 6, Block 1, Dawn Way Ridge.

WHEREAS, the property owned by the Danner Family Limited Partnership is located within the City of South St. Paul.

WHEREAS, A. Kamish Company, a Minnesota corporation, A. Kamish & Sons, Inc., a Minnesota corporation, and James A. Kamish, are jointly and severally the Owners of Lots 7 through 15, Block 1, and a portion of Lot 6, Block 1, Dawn Way Ridge.

WHEREAS, the property jointly and severally owned by A. Kamish Company, a Minnesota corporation, A. Kamish & Sons, Inc., a Minnesota corporation, and James A. Kamish is located within the City of Inver Grove Heights.

WHEREAS, the Plat of Dawn Way Ridge is located partially within the City of Inver Grove Heights and partially within the City of South St. Paul.

WHEREAS, final plat approval of the Plat of the Dawn Way Ridge was submitted to the City Council of the City of Inver Grove Heights on May 8, 2000, together with other proposed Development documents required as part of the plat approval process.

WHEREAS, final plat approval of the Plat of the Dawn Way Ridge was submitted to the City Council of the City of South St. Paul on May 15, 2000, together with other proposed Development documents required as part of the plat approval process.

Inver Grove Heights Resolution 2000-061
South St. Paul Resolution 2000-126
Page 2

WHEREAS, it is in the City of Inver Grove Heights' interest to annex that portion of Lot 6, Block 1, Dawn Way Ridge, lying within the corporate boundaries of the City of South St. Paul in exchange for the detachment of that portion of approximately one-half of the right-of-way of 61st Street, which presently lies within the corporate boundaries of Inver Grove Heights

WHEREAS, the modification of the corporate boundaries of the City of Inver Grove Heights and the City of South St. Paul would consist of the City of South St. Paul detaching (and the City of Inver Grove Heights annexing) that portion of Lot 6, Block 1, Dawn Way Ridge, lying within the corporate boundaries of the City of South St. Paul.

WHEREAS, the annexation procedure referred to herein is only in the City of Inver Grove Heights' interest if the City of South St. Paul agrees to an identical detachment proceeding.

WHEREAS, the legal description of the property (hereafter "Property") being annexed is:

That part of Lot 6, Block 1, DAWN WAY RIDGE, Dakota County, Minnesota which lies within Section 3, T.27N., R.22W., said Dakota County.

(acreage)

WHEREAS, a diagram of the Property is attached hereto and incorporated herein as Exhibit A.

WHEREAS, the Property is located within the boundaries of the City of South St. Paul.

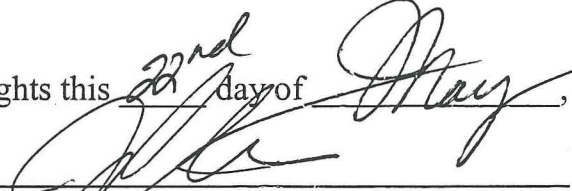
NOW, THEREFORE, BE IT RESOLVED:

1. That the City of Inver Grove Heights and the City of South St. Paul jointly request that the Office of Strategic and Long-Range Planning concurrently detach the Property from the City of South St. Paul and annex the same to the City of Inver Grove Heights at the earliest possible date.
2. That this Joint Resolution be submitted to the Office of Strategic and Long-Range Planning for the purposes set forth herein.

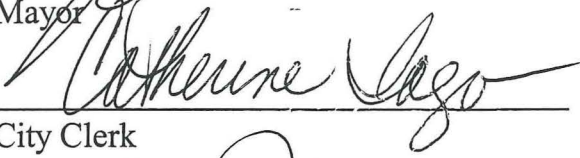
Inver Grove Heights Resolution 2000-061
South St. Paul Resolution 2000-126
Page 3

3. This Resolution and the Order of the Office of Strategic and Long-Range Planning detaching the Property from the City of South St. Paul and annexing the Property to the City of Inver Grove Heights shall be effective on the day following the recordation of the plat of Dawn Way Ridge in the Office of the Dakota County Recorder.

Approved by the City of Inver Grove Heights this 22nd day of May, 2000.

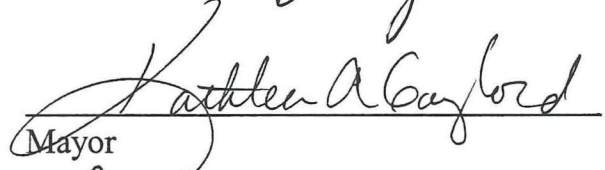


Mayor

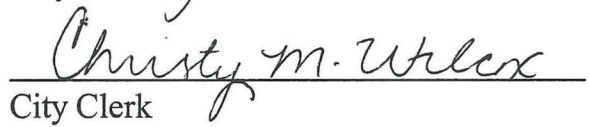
Attest: 

City Clerk

Approved by the City of South St. Paul this 15th day of May, 2000.



Mayor

Attest: 

City Clerk

SSP to detach
that portion of
Lot 6, Block 1,
Dawn Way Ridge
lying within the
corporate boundary
of SSP; IGH to
Annex.

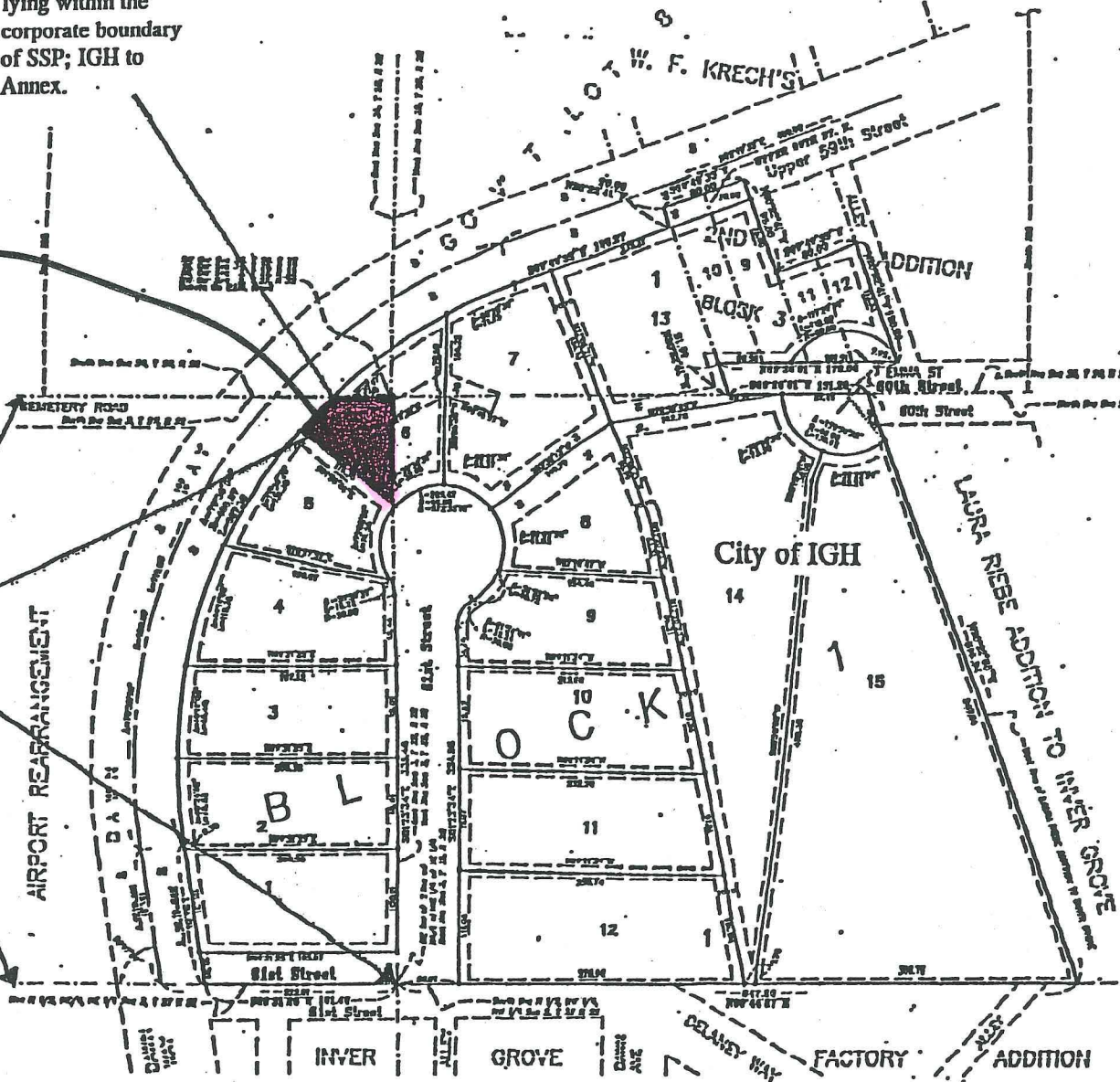
DAWN WAY RIDGE

EXHIBIT

5,350 sq. ft.
1.23 acres

SSP Corporate
Boundary

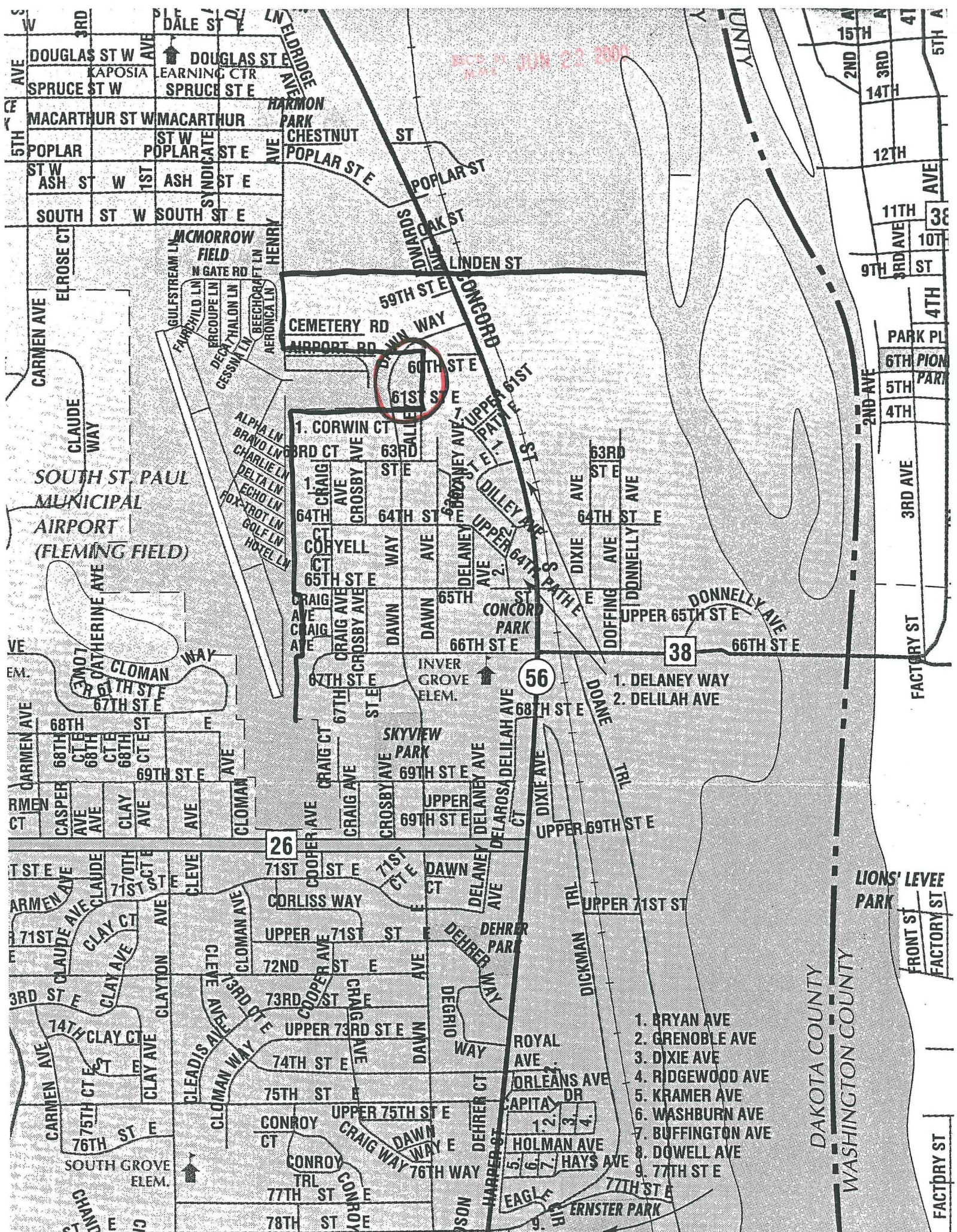
AIRPORT REARRANGEMENT



REC'D BY JUN 22 2000
MAM B

- BCA
- BOA
- COA
- DOA
- ECA
- FOA
- GCA
- HCA
- ICA
- JCA
- KCA
- LCA
- MCA
- NCA
- OCA
- PCA
- QCA
- RCA
- S
- T
- U
- V
- W
- X
- Y
- Z

REC'D JUN 22 2000



- 1. CORWIN CT
- 2. 3RD CT
- 3. 63RD ST E
- 4. 64TH ST E
- 5. 64TH ST E
- 6. 65TH ST E
- 7. 66TH ST E
- 8. 67TH ST E
- 9. 68TH ST E

- 1. BRYAN AVE
- 2. GRENOBLE AVE
- 3. DIXIE AVE
- 4. RIDGEWOOD AVE
- 5. KRAMER AVE
- 6. WASHBURN AVE
- 7. BUFFINGTON AVE
- 8. DOWELL AVE
- 9. 77TH ST E

DAKOTA COUNTY
WASHINGTON COUNTY

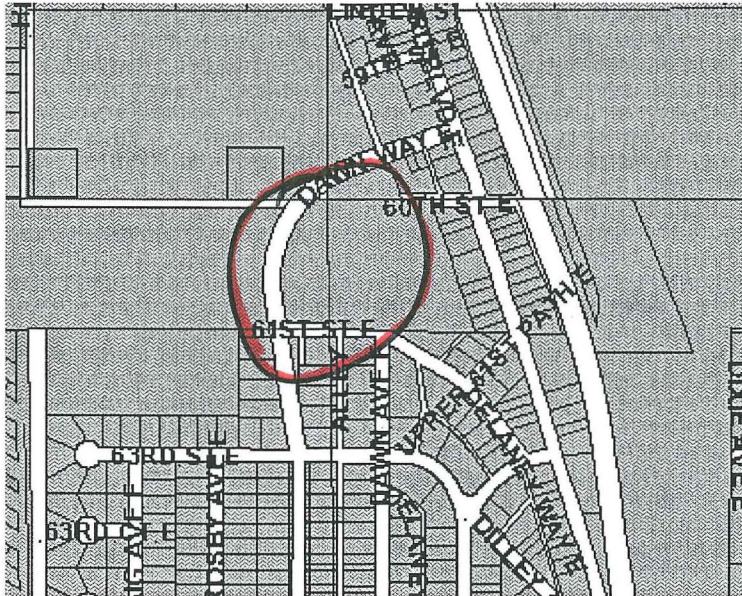
REC'D. BY
MAM JUN 22 2000

Dakota County Real Estate Inquiry

Data Updated 5/15/00.



Select option and click map:



Legend

- Real Estate Parcels
- Parcels
- Common, Ownership
- Water
- R/W, Easement
- Dedicated R/W

Choose a search method, enter criteria, and click Go or hit enter key.

House #:

Address:

PIN:

This application was developed by the GIS unit of the Dakota County Survey and Land Information Department in cooperation with Assessing Services and Treasurer - Auditor Departments

