

**RESOLUTION 97-49**  
**JOINT RESOLUTION BETWEEN THE CITY OF SAVAGE AND THE CITY OF**  
**PRIOR LAKE FOR THE CONCURRENT DETACHMENT AND ANNEXATION**  
**OF LAND LOCATED BETWEEN THE CENTER LINE OF COUNTY ROAD 42**  
**AND ITS NORTHERLY RIGHT-OF-WAY LINE and LAND LOCATED**  
**BETWEEN THE CENTER LINE OF HIGHWAY 13 AND ITS EASTERLY**  
**RIGHT-OF-WAY LINE.**

**WHEREAS,** the City of Prior Lake desires to detach a parcel of property approximately 6 acres in size and described as follows:

All land presently situated in the City of Prior Lake lying between the center line of Scott County Road 42 and its northerly right-of-way line of Scott County Road 42, extending from the intersection of Scott County Road 42 and MN Highway 13 to the westerly boundary of Section 19, Township 115N, Range 21W of Scott County.

**WHEREAS,** the City of Prior Lake desires to detach a parcel of property approximately 10.5 acres in size and described as follows:

All land presently situated in the City of Prior Lake lying between the center line of MN Highway 13 and its easterly right-of-way line of MN Highway 13, extending from the intersection of MN Highway 13 and Scott County Road 42 to the westerly boundary of Section 31, Township 115N, Range 21W of Scott County.

**WHEREAS,** the above properties about the City of Savage and the City of Savage desired to annex said properties; and

**WHEREAS,** services to said properties are currently provided by the City of Savage, and will continue to be provided by the City of Savage in the future.


**NOW, THEREFORE, BE IT RESOLVED** that the City of Prior Lake and the City of Savage hereby jointly express a desire to adjust the municipal boundaries through detachment and annexation; and,

**BE IT FURTHER RESOLVED** that the desired new boundaries be located along the center line of CSAH 42 and TH 13 in the areas described above; and

**FINALLY, BE IT RESOLVED** that this resolution be submitted to the Minnesota Municipal Board with the intent and request that the Municipal Board authorize the detachment and annexation at the earliest possible date.

REC'D. BY  
M/J/E AUG 13 1997

Approved by the City of Prior Lake this 2nd day of June, 1997.

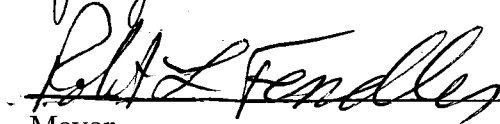
  
\_\_\_\_\_

Mayor

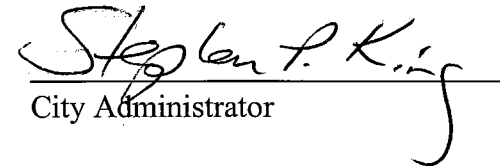
  
\_\_\_\_\_

City Manager

Approved by the City of Savage this 7 day of July, 1997.

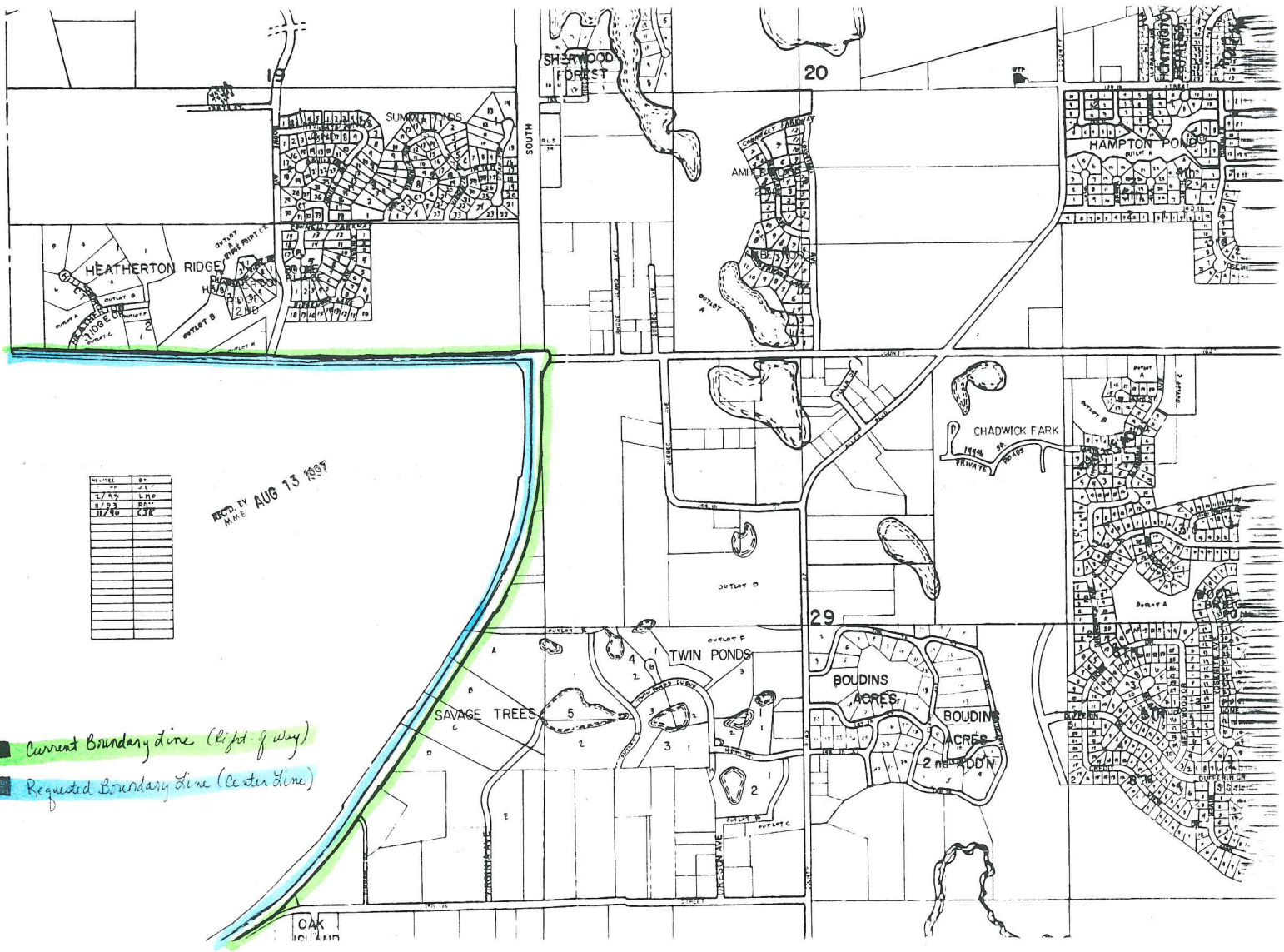
  
\_\_\_\_\_

Mayor

  
\_\_\_\_\_

City Administrator

COPY



REVISED	BY
1/85	J.L.F.
8/83	LINE
11/86	REV.
	CTK

RECD. BY AUG 13 1987  
MHE

█ Current Boundary line (Right of way)  
█ Requested Boundary line (Center line)

OAK  
10/1/86