

A RESOLUTION AUTHORIZING THE DETACHMENT AND ANNEXATION OF CERTAIN
PROPERTY TO ADJUST THE BOUNDARY BETWEEN THE CITY OF CORCORAN AND THE
CITY OF MAPLE GROVE

WHEREAS, the owners of certain property located in the City of Corcoran wish to attach to the Maple Grove water and sewer systems; and

WHEREAS, the area in question is accessible only by passing through Maple Grove; and

WHEREAS, the land is contiguous to the City of Maple Grove; and

WHEREAS, the needed services cannot be provided by the City of Corcoran; and

WHEREAS, the cities of Corcoran and Maple Grove are both in favor of the detachment of said property from Corcoran and Annexation to Maple Grove; and

WHEREAS, Exhibit A to this resolution shows the existing municipal boundary between the Cities of Corcoran and Maple Grove in the Appaloosa Woods Subdivision; and

WHEREAS, Exhibit B to this resolution identifies the parcels to be detached and annexed; and

WHEREAS, Exhibit C depicts the new proposed municipal boundary between the Cities of Corcoran and Maple Grove after the boundary adjustment; and

WHEREAS, the City Council of the City of Corcoran deems it desirable and in the best interest of the City to adjust the boundary between the City of Corcoran and the City of Maple Grove.

NOW THEREFORE, BE IT RESOLVED by the City Council of the City of Corcoran that:

1. It desires to detach the area described in Exhibit B; and
2. It also would allow the detachment of Lots 5 and 6, Block 2 of Appaloosa Woods Third Addition Subdivision, Hennepin County, MN; and

BE IT FURTHER RESOLVED that the City staff is authorized to request the State of Minnesota Municipal Board to issue an order implementing the detachment of the area described in Exhibit B and that the Mayor and City Clerk are hereby authorized to execute any documents necessary to accomplish the detachment proceedings.

Moved by member Larkin, seconded by member Mayers.

The following voted in favor of said resolution: Mayor Larkin, Council members Kluck and Mayers.

Council members Becker and Gmach were excused.

The following voted against the same: None.

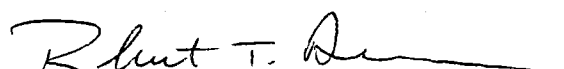
Whereupon said Resolution was declared carried.

Dated this 22nd day of June, 1995.



Mayor

ATTEST:



City Administrator

REC'D. BY JUN 30 1995
M M R

**CITY OF MAPLE GROVE
RESOLUTION NO. 95-139**

**A RESOLUTION AUTHORIZING THE DETACHMENT AND ANNEXATION OF
CERTAIN PROPERTY TO ADJUST THE BOUNDARY BETWEEN THE CITY OF
CORCORAN AND THE CITY OF MAPLE GROVE**

WHEREAS, the owners of certain property located in the City of Corcoran wish to attach to the Maple Grove water and sewer systems; and

WHEREAS, the area in question is accessible only by passing through Maple Grove; and

WHEREAS, the land is contiguous to the City of Maple Grove; and

WHEREAS, the needed services cannot be provided by the City of Corcoran; and

WHEREAS, the cities of Corcoran and Maple Grove are both in favor of the detachment of said property from Corcoran and its Annexation to Maple Grove; and

WHEREAS, Exhibit A to this resolution shows the existing municipal boundary between the Cities of Corcoran and Maple Grove in the Appaloosa Woods Subdivision; and

WHEREAS, Exhibit B to this resolution identifies the parcel to be detached and annexed; and

WHEREAS, Exhibit C depicts the new proposed municipal boundary between the Cities of Corcoran and Maple Grove after the boundary adjustment; and

WHEREAS, The City Council of the City of Maple Grove deems it desirable and in the best interest of the City to adjust the boundary between the City of Corcoran and the City of Maple Grove

NOW, THEREFORE BE IT RESOLVED by the City Council of the City of Maple Grove that it desires to annex the area described in Exhibit B; and

BE IT FURTHER RESOLVED that the City staff is authorized to request the State of Minnesota Municipal Board to issue an order implementing the annexation of the area described in Exhibit B and that the Mayor and City Clerk are hereby authorized to execute any documents necessary to accomplish the annexation proceedings.

Motion for the foregoing Resolution was made by Councilmember Ramstad and seconded by Councilmember Sargent and upon a vote being duly taken thereon, the following voted in favor thereof: Mayor Burlingame, Councilmembers Ramstad, Sargent, Koski, Burtness

REC'D. BY JUN 30 1995
A M R

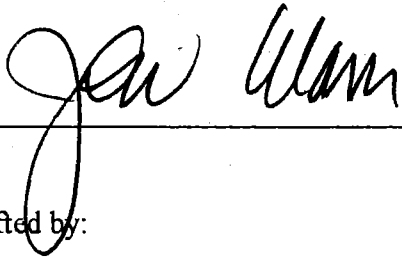
and the following were against: None

and the following were absent: None

WHEREUPON, the Resolution was declared duly passed and adopted the 19th day of June, 1995.

STATE OF MINNESOTA)
COUNTY OF HENNEPIN) SS.
CITY OF MAPLE GROVE)

I, the undersigned, being the duly qualified and acting Clerk of the City of Maple Grove, Hennepin County, Minnesota, hereby certify that the above and foregoing Resolution No. 95-139 is a true and correct copy of the Resolution as adopted by the City Council of the City of Maple Grove on the 19th day of June, 1995.



Jon Elam, City Clerk

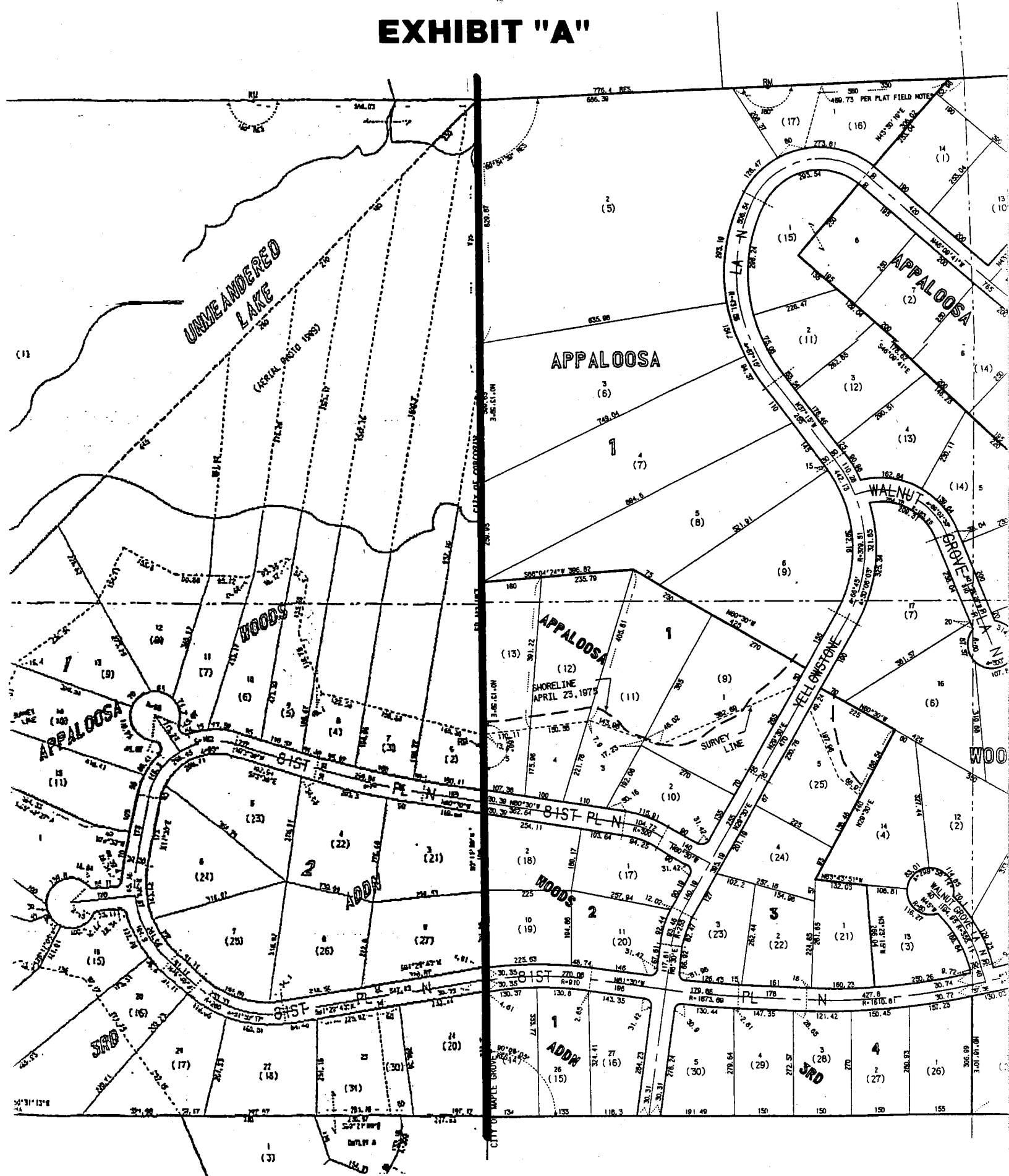
This instrument was drafted by:

Earle T. Anderson, Jr.
Maple Grove City Attorney
Meyer & Njus, P.A.
5000 Norwest Ctr.
90 S. 7th St.
Minneapolis, MN 55402-4121

REC'D. BY JUN 30 1995
M M R

Commencing at the most northerly corner of Lot 7, Block 1, APPALOOSA WOODS 3RD ADDITION, HENNEPIN COUNTY, MINNESOTA; thence southerly along the east plat line of said APPALOOSA WOODS 3RD ADDITION to the southeast corner of Lot 3, Block 2, APPALOOSA WOODS 3RD ADDITION; thence southwesterly to the southwest corner of said Lot 3, Block 2; thence northwesterly to the southwest corner of Lot 4, Block 2, APPALOOSA WOODS 3RD ADDITION; thence northeasterly along the west line of said Lot 4, Block 2 and its northeasterly extension to the centerline of 81st Place North as dedicated in the plat of APPALOOSA WOODS 3RD ADDITION; thence southeasterly along said centerline to the point of intersection of the centerline of 81st Place North and the southwesterly extension of the southeasterly line of Lot 8, Block 1, APPALOOSA WOODS 3RD ADDITION; thence northeasterly along the southeasterly line of said Lot 8, Block 1 to the most northerly corner of said Lot 8, Block 1; thence northeasterly to the point of beginning.

EXHIBIT "A"

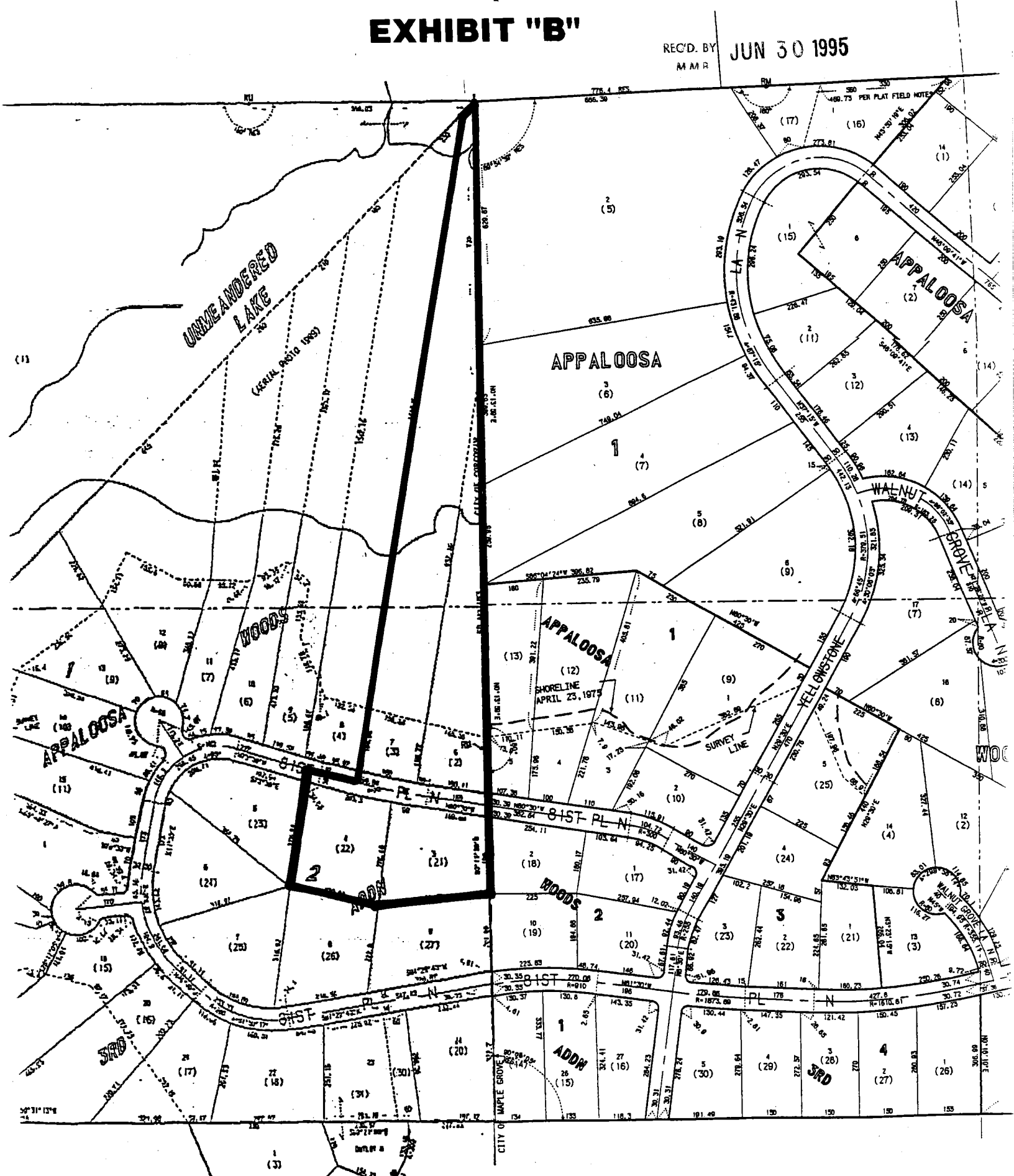


EXISTING MUNICIPAL BOUNDARY

EXHIBIT "B"

REC'D. BY
M A R

JUN 30 1995

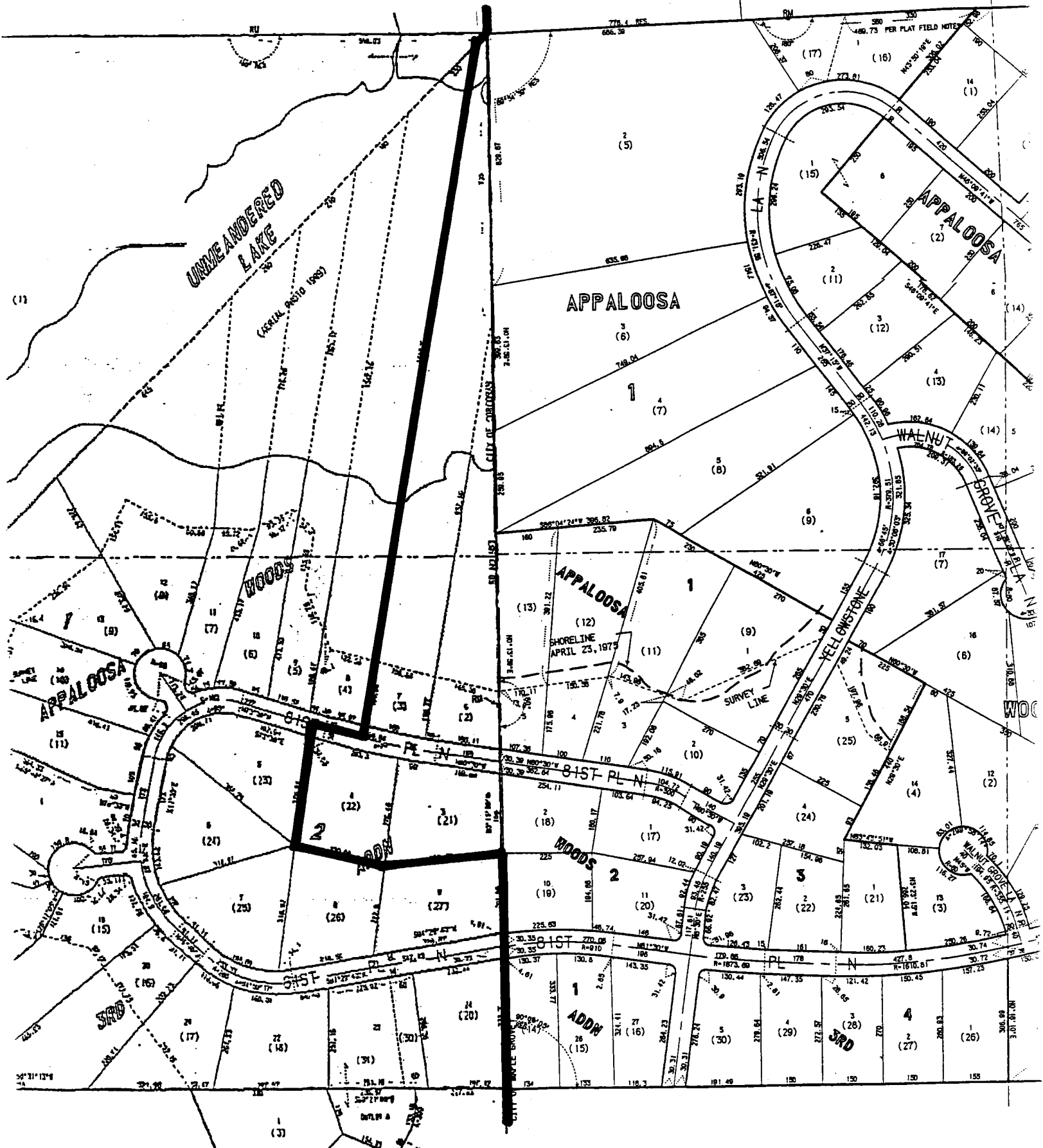


PARCELS TO BE DETACHED AND ANNEXED

EXHIBIT "C"

REC'D. BY
MMR

JUN 30 1995



NEW PROPOSED MUNICIPAL BOUNDARY