

CITY OF SHOREWOOD
HENNEPIN COUNTY, MINNESOTA

REC'D. BY
MMB APR 22 1994

RESOLUTION CONCERNING THE CONCURRENT
DETACHMENT AND ANNEXATION OF LAND

WHEREAS, Minn. Stat. § 414.061 authorizes the concurrent detachment and annexation of land; and

WHEREAS, the cities of Chanhassen and Shorewood have agreed to the concurrent detachment and annexation of a parcel of property.

NOW, THEREFORE, BE IT RESOLVED by the City Council of the City of Shorewood, Minnesota as follows:

1. The following described land shall be detached from the City of Shorewood and annexed to the City of Chanhassen:

That part of Lot 89, AUDITOR'S SUBDIVISION NUMBER 135, Hennepin County, Minnesota, described as follows:

Commencing at the Southwest corner of said Lot 89; thence North along the West line 50 feet; thence easterly and parallel with the southerly line a distance of 49 feet; thence South 79° 41' 43" West a distance of 51 feet; thence West along the southerly line of said lot a distance of 40 feet to the point of beginning.

2. This Resolution is contingent upon the City of Chanhassen adopting a similar resolution approving the aforementioned detachment and annexation and is further contingent upon the approval of the Minnesota Municipal Board.
3. The City Administrator/Clerk is directed to forward a copy of this Resolution to the City of Chanhassen. Upon receipt of a similar resolution from the City of Chanhassen, The City Administrator/Clerk is further directed to forward a copy of this Resolution to the Minnesota Municipal Board.

PASSED AND DULY ADOPTED this 24th day of January, 1994, by the City Council of the City of Shorewood.

CITY OF SHOREWOOD

(SEAL)

BY: Barbara Breda
Its Mayor

ATTEST:

James C. Hurm
Its Administrator/Clerk

RECEIVED

FEB 18 1994

CITY OF CHANHASSEN

REC'D. BY
M A R APR 22 1994

CITY OF CHANHASSEN
CARVER AND HENNEPIN COUNTIES, MINNESOTA

DATE: March 28, 1994 RESOLUTION NO: 94-37

MOTION BY: Chmiel SECONDED BY: Wing

A RESOLUTION CONCERNING THE CONCURRENT DETACHMENT
AND ANNEXATION OF LAND

WHEREAS, Minnesota Statute § 414.061 authorizes the concurrent detachment and annexation of land; and

WHEREAS, the cities of Chanhassen and Shorewood have agreed to the concurrent detachment and annexation of a parcel of property.

NOW, THEREFORE, BE IT RESOLVED by the City Council of the City of Chanhassen, Minnesota as follows:

1. The following described land shall be detached from the City of Shorewood and annexed to the City of Chanhassen:


That part of Lot 89, AUDITOR'S SUBDIVISION NUMBER 135, Hennepin County, Minnesota, described as follows:

Commencing at the Southwest corner of said Lot 89; thence North along the West line 50 feet; thence easterly and parallel with the southerly line a distance of 49 feet; thence South 79° 41' 43" West a distance of 51 feet; thence West along the southerly line of said lot a distance of 40 feet to the point of beginning.

2. This Resolution is contingent upon the City of Shorewood adopting a similar resolution approving the aforementioned detachment and annexation and is further contingent upon the approval of the Minnesota Municipal Board.
3. The City Manager is directed to forward a copy of this resolution to the City of Shorewood. Upon receipt of a similar resolution from the City of Shorewood, he is further directed to forward a copy of this resolution to the Minnesota Municipal Board.

Passed and adopted by the Chanhassen City Council this 28th day of March, 1994.

ATTEST:



Don Ashworth, City Clerk/Manager



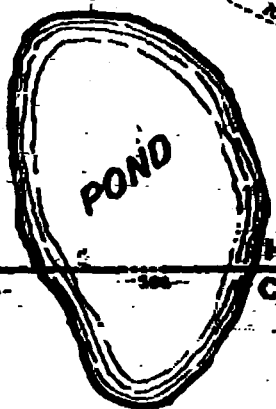
Donald J. Chmiel, Mayor

01.03.1994 16:07

P. 3

REC'D. BY APR 22 1994
MMP

PART OF
LOT 121
(7)



LOCATION

HENNEPIN COUNTY
CARNER COUNTY

GERALD COX
BK 156, P 455

RICHARD W. O'CONNOR
DOC. NO. 72041

HILL

KOEHNEN CIRCLE

KOEHNEN CIRCLE

DANIEL PLAZIAK
BK 148, P 81
300

R. NUESSE
DOC. NO. 100442
300

TERERRA

HARVIR

R.L.D.S.

NO.

FROM CITY OF CHANHASSEN

VITTON GALPIN

A.E. BRAGG
BK 150, P 327

STELLER

CIRCLE

FURNACE

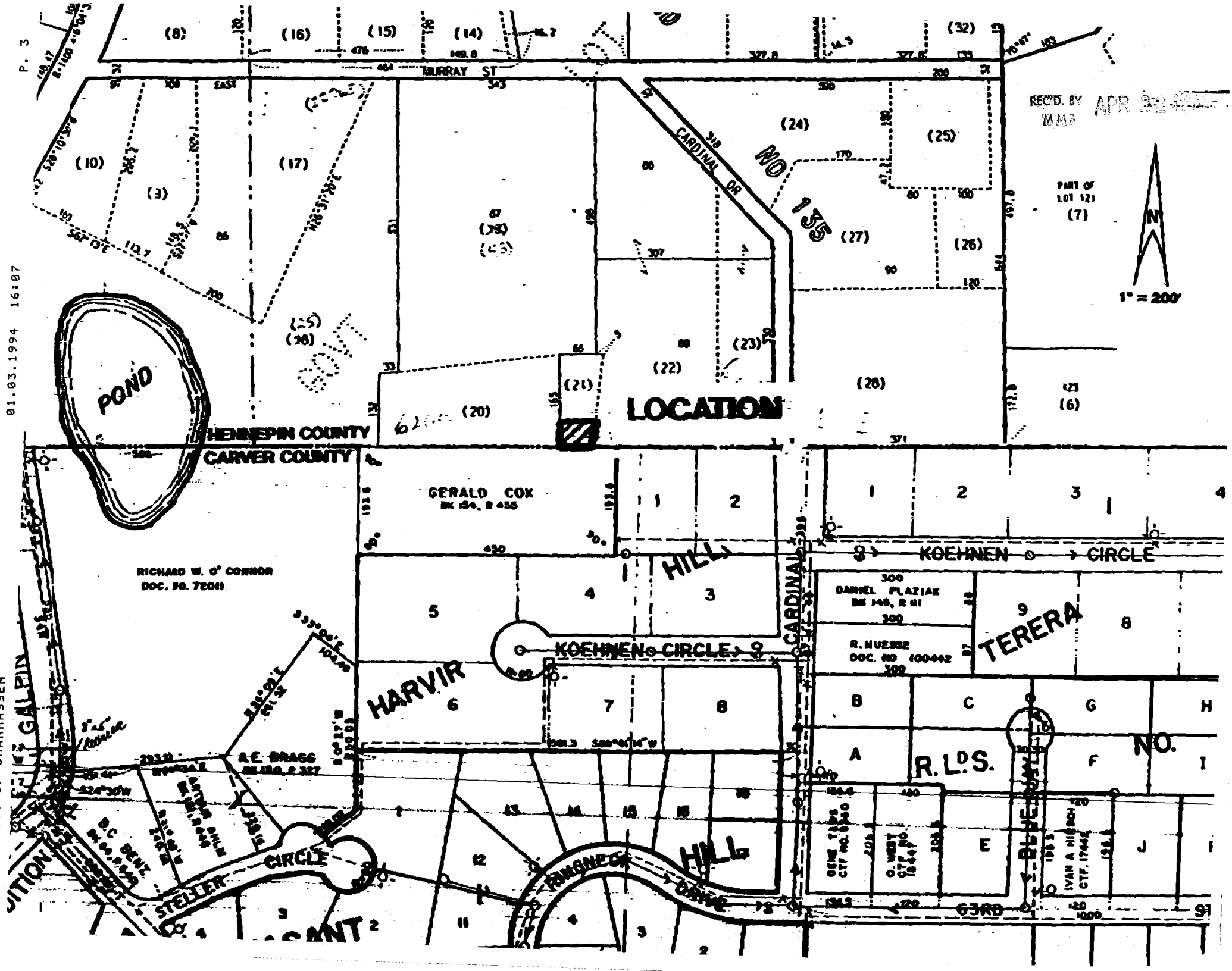
HILL

BLVD

ONE TIPS
CITY NO. 1530

O. WEBB
CITY NO. 1854

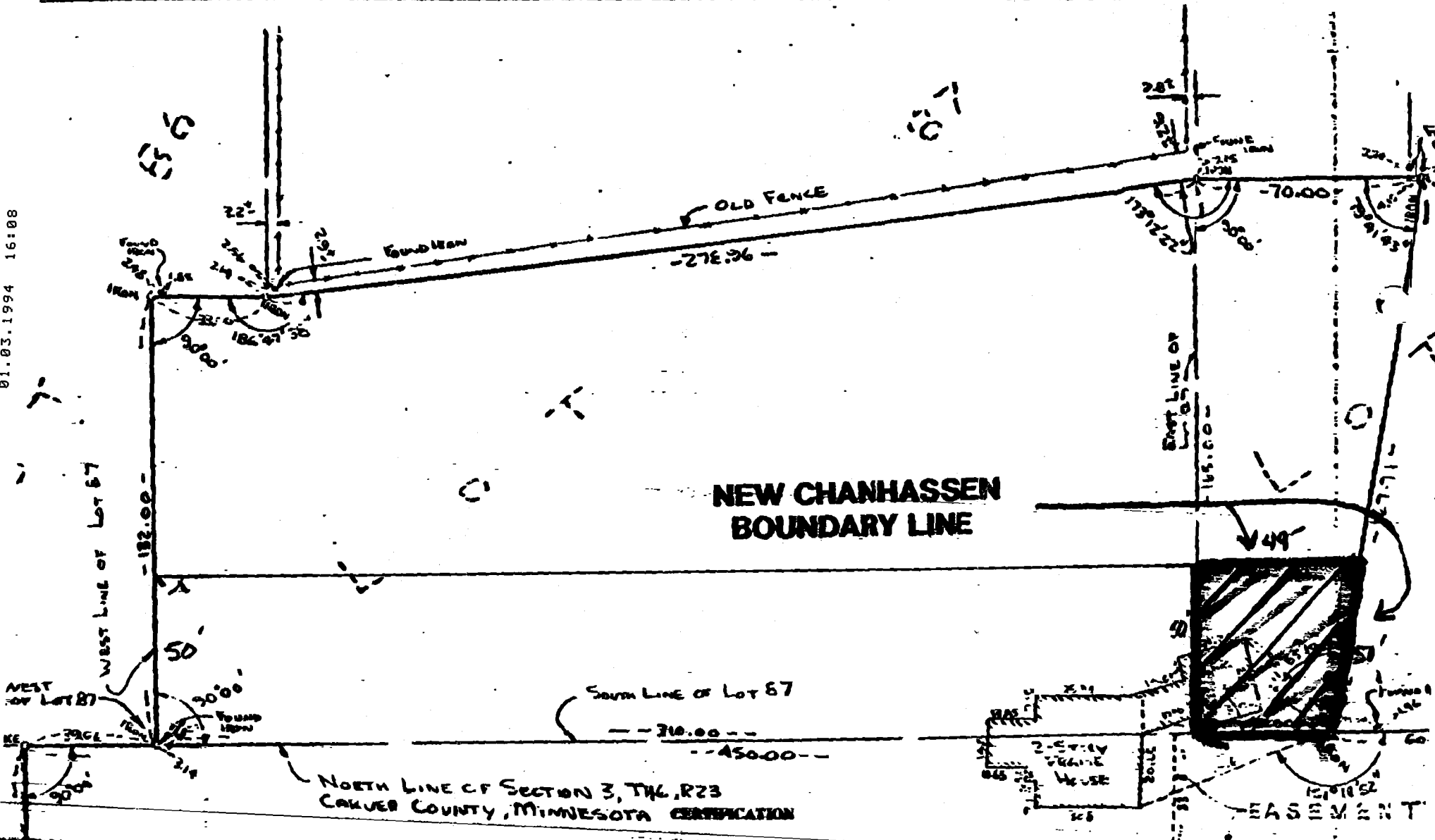
IVAN A. HIBSON
CITY NO. 17442



REC'D BY APR 22 1994
M.M.R.

01.03.1994 16:08

FROM CITY OF CHANHASSEN



I hereby certify that this is a correct photocopy of a Registered Land Survey depicting the Carver/Hennepin County Line for 1st 2nd, Auditor's Subdivision No. 131, Hennepin County, Minnesota, and that a line depicting the land detached from Shennood to Chanhassen, as approved by the Minnesota Municipal Board, has been added and is correct.

Don Ashrook, City Manager

Charles Feltz, City Engineer

Subscribed and sworn to before me this 26th day of July, 1993.

SCALE 1" = 40'