

RESOLUTION NO. 51 -93

**A RESOLUTION CONCERNING THE CONCURRENT  
DETACHMENT AND ANNEXATION OF LAND**

**WHEREAS**, Minnesota Statutes 414.061 authorizes the concurrent detachment and annexation of land; and

**WHEREAS**, the cities of Chanhassen and Shorewood have agreed to the concurrent detachment and annexation of a parcel of property.

**NOW, THEREFORE, BE IT RESOLVED** by the City Council of the City of Shorewood, Minnesota as follows:

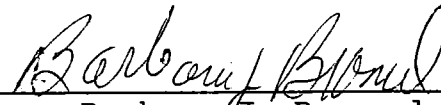
1. The following described land shall be detached from the City of Shorewood and annexed to the City of Chanhassen:

That part of Lot 87, Auditor's Subdivision Number 135, Hennepin County, Minnesota, described as follows: Commencing at the Southeast corner of said Lot 87; thence West along the South line thereof to the Southwest corner thereof; thence North along the West line thereof, a distance of 50 feet; thence in a straight line easterly to a point on the East line of said lot 50 feet North of the Southeast corner thereof; thence South along the East line thereof, to the point of beginning.

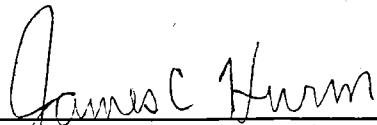
2. This Resolution is contingent upon the City of Chanhassen adopting a similar resolution approving the aforementioned detachment and annexation and is further contingent upon the approval of the Minnesota Municipal Board.
3. The City Administrator/Clerk is directed to forward a copy of this Resolution to the City of Chanhassen. Upon receipt of a similar resolution from the City of Chanhassen. The City Administator/Clerk is further directed to forward a copy of this Resolution to the Minnesota Municipal Board.

**PASSED AND ADOPTED** by the City Council of the City of Shorewood this 24th day of May 1993.

(SEAL)

  
 \_\_\_\_\_  
 Barbara J. Brancel, Mayor

ATTEST:

  
 \_\_\_\_\_  
 James C. Hurm, City Administrator/Clerk

RESOLUTION NO. 93-28A

CITY OF CHANHASSEN  
CARVER AND HENNEPIN COUNTIES, MINNESOTA

RESOLUTION CONCERNING THE CONCURRENT  
DETACHMENT AND ANNEXATION OF LAND

WHEREAS, Minn. Stat. § 414.061 authorizes the concurrent detachment and annexation of land; and

WHEREAS, the cities of Chanhassen and Shorewood have agreed to the concurrent detachment and annexation of a parcel of property.

NOW, THEREFORE, BE IT RESOLVED by the City Council of the City of Chanhassen, Minnesota as follows:

1. The following described land shall be detached from the City of Shorewood and annexed to the City of Chanhassen:


That part of Lot 87, Auditor's Subdivision Number 135, Hennepin County, Minnesota, described as follows: Commencing at the Southeast corner of said Lot 87; thence West along the South line thereof to the Southwest corner thereof; thence North along the West line thereof, a distance of 50 feet; thence in a straight line easterly to a point on the East line of said lot 50 feet North of the Southeast corner thereof; thence South along the East line thereof, to the point of beginning.

2. This Resolution is contingent upon the City of Shorewood adopting a similar resolution approving the aforementioned detachment and annexation and is further contingent upon the approval of the Minnesota Municipal Board.
3. The City Manager is directed to forward a copy of this Resolution to the City of Shorewood. Upon receipt of a similar resolution from the City of Shorewood, he is further directed to forward a copy of this Resolution to the Minnesota Municipal Board.

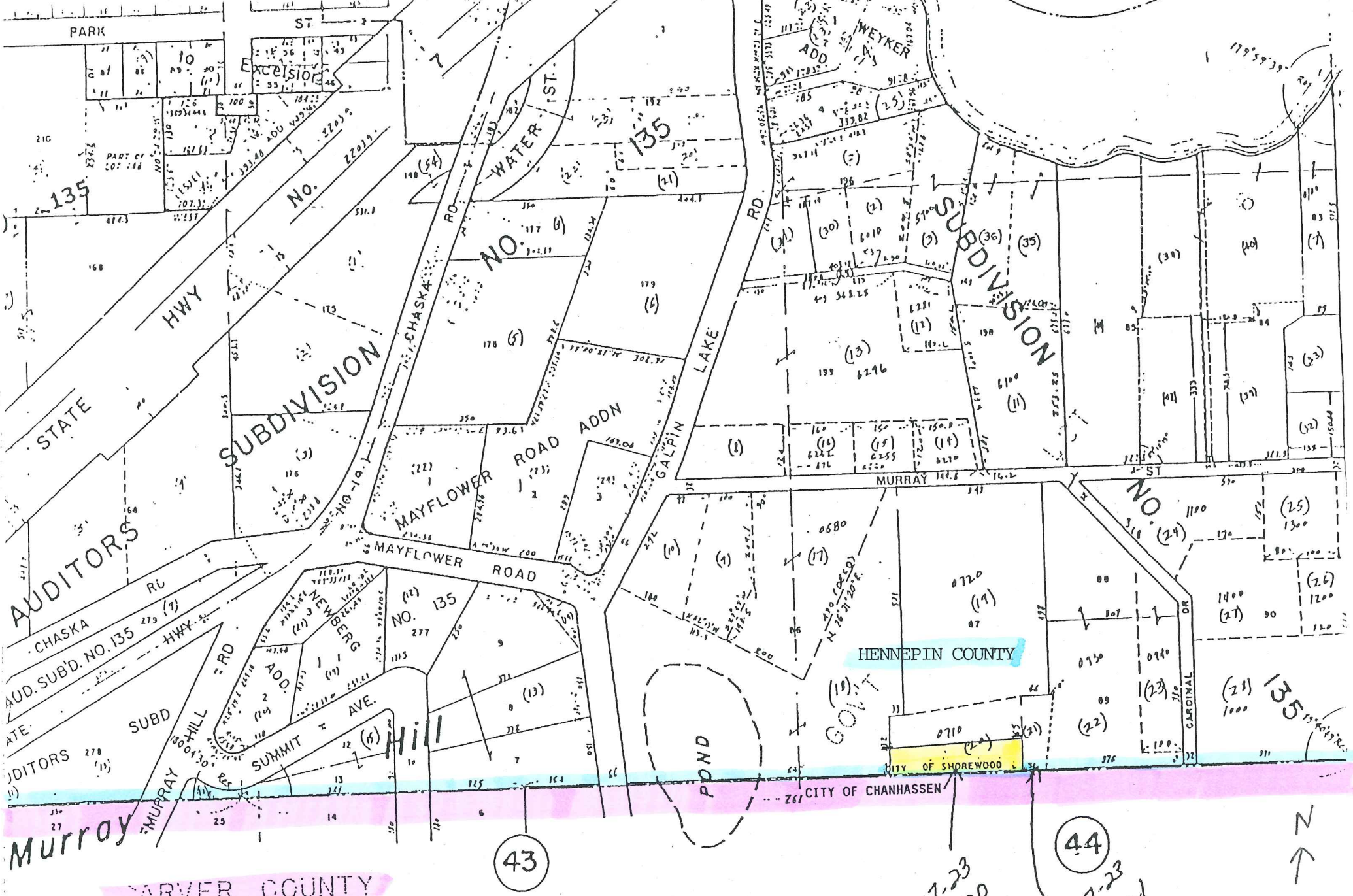
PASSED AND DULY ADOPTED this 12th day of April, 1993, by the City Council of the City of Chanhassen.

ATTEST:

  
 Don Ashworth, Clerk/Manager

  
 Donald J. Chmiel, Mayor

(SEAL)



CARVER COUNTY

43

LAND PROPOSED TO BE DETACHED/ANNEXED

34-117-23  
44-0020

44  
34-117-23  
44-0021

