

REC'D. BY  
MMB APR 05 1991

CITY OF MAPLE GROVE  
RESOLUTION NO. 91-062

A RESOLUTION AUTHORIZING THE DETACHMENT AND ANNEXATION OF CERTAIN PROPERTY  
TO ADJUST THE BOUNDARY BETWEEN THE CITY OF PLYMOUTH AND THE CITY OF MAPLE GROVE.

WHEREAS, Minnesota Statutes, Section 414.061, Subdivision 1 authorizes property of a municipality which abuts another municipality to be concurrently detached and annexed;

WHEREAS, a portion of the parking lot for a shopping center located in Maple Grove near the intersection of County Road 10 and Quinwood Lane extends into the City of Plymouth;

WHEREAS, a portion of two business sites near County Road 10 and Interstate 494 in Plymouth extend into the City of Maple Grove;

WHEREAS, the City Councils of Plymouth and Maple Grove have had discussions regarding a proposed boundary change in the area between the intersection of County Road 10 and Interstate 494 and the intersection of County 10 and Quinwood Lane;

WHEREAS, Exhibit A to this resolution shows the existing municipal boundary between the Cities of Maple Grove and Plymouth between the intersection of Quinwood Lane and County Road 10 and the intersection of County Road 10 and Interstate 494;

WHEREAS, Exhibit B to this resolution identifies the three parcels that are proposed to be exchanged between Plymouth and Maple Grove;

WHEREAS, Exhibit C depicts the new proposed municipal boundary between Plymouth and Maple Grove after the boundary adjustment;

WHEREAS, The City Council of the City of Maple Grove deems it desirable and in the best interest of the City to adjust the boundary between the City of Plymouth and the City of Maple Grove;

NOW, THEREFORE, BE IT RESOLVED by the City Council of the City of Maple Grove that it desires to annex Area C as described on Exhibit B and desires to detach Areas A and B as described on Exhibit B;

BE IT FURTHER RESOLVED that the City Administrator is authorized to request the State of Minnesota Municipal Board to issue an order implementing the concurrent detachment and annexation of Areas A, B, And C on Exhibit B and that the Mayor and City Administrator are hereby authorized to execute any documents necessary to accomplish the annexation and detachment proceedings.

Motion for the foregoing Resolution was made by Councilmember Ramstad and seconded by Councilmember Burtness and upon a vote being duly taken thereon, the following voted in favor thereof: Mayor Deane and Councilmembers Ramstad, Burtness, Sargent and Dehn

and the following were against: None

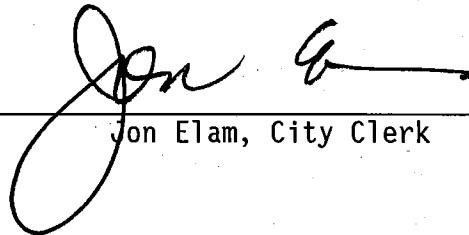
and the following were absent: None

REC'D. BY APR 05 1991  
MMB

STATE OF MINNESOTA )  
COUNTY OF HENNEPIN ) SS.  
CITY OF MAPLE GROVE)

I, the undersigned, being the duly qualified and acting Clerk of the City of Maple Grove, Hennepin County, Minnesota, hereby certify that I have carefully compared the attached resolution with the original thereof on file and of record in my office, and the same is a full, true, and correct copy of Resolution 91-062.

WITNESS, my hand and seal this 1st day of April, 1991.



Jon Elam, City Clerk

CITY OF PLYMOUTH

Pursuant to due call and notice thereof, a regular meeting of the City Council of the City of Plymouth, Minnesota, was held on the 1st day of April, 1991. The following members were present: Mayor Bergman, Councilmembers Helliwell, Ricker, Vasiliou, Zitur  
The following members were absent: None

\*\*\*

\*\*\*

Councilmember Vasiliou introduced the following Resolution and moved its adoption:

RESOLUTION 91- 189

RESOLUTION AUTHORIZING THE DETACHMENT AND ANNEXATION OF CERTAIN PROPERTY TO ADJUST THE BOUNDARY BETWEEN THE CITY OF PLYMOUTH AND THE CITY OF MAPLE GROVE

WHEREAS, Minnesota Statutes, Section 414.061, Subdivision 1 authorizes property of a municipality which abuts another municipality to be concurrently detached and annexed;

WHEREAS, a portion of the parking lot for a shopping center located in Maple Grove near the intersection of County Road 10 and Quinwood Lane extends into the City of Plymouth;

WHEREAS, a portion of two business sites near County Road 10 and Interstate 494 in Plymouth extend into the City of Maple Grove;

WHEREAS, the City Councils of Plymouth and Maple Grove have had discussions regarding a proposed boundary change in the area between the intersection of County Road 10 and Interstate 494 and the intersection of County 10 and Quinwood Lane;

WHEREAS, Exhibit A to this resolution shows the existing municipal boundary between the cities of Maple Grove and Plymouth between the intersection of Quinwood Lane and County Road 10 and the intersection of County Road 10 and Interstate 494:

WHEREAS, Exhibit B to this resolution identifies the three parcels that are proposed to be exchanged between Plymouth and Maple Grove;

WHEREAS, Exhibit C depicts the new proposed municipal boundary between Plymouth and Maple Grove after the boundary adjustment;

WHEREAS, the City Council of the City of Plymouth deems it desirable and in the best interest of the City to adjust the boundary between the City of Plymouth and the City of Maple Grove;

REC'D. BY APR 05 1991  
M M B

Page Two  
Resolution 91- 189

NOW, THEREFORE, BE IT RESOLVED by the City Council of the City of Plymouth that it desires to annex Areas A and B as described on Exhibit B and desires to detach Area C as described on Exhibit B to the City of Maple Grove;

BE IT FURTHER RESOLVED that the City Manager is authorized to request the State of Minnesota Municipal Board to issue an order implementing the concurrent detachment and annexation of Areas A, B, and C on Exhibit B and that the Mayor and City Manager are hereby authorized to execute any documents necessary to accomplish the annexation and detachment proceedings.

The motion for adoption of the foregoing Resolution was duly seconded by Councilmember Helliwell, and upon vote being taken thereon, the following voted in favor thereof: Helliwell, Ricker, Zitur, Vasiliou, Bergman.

The following voted against or abstained None.  
Whereupon the Resolution was declared duly passed and adopted.

(res/boundary)

REC'D. BY APR 05 1991  
MMB

STATE OF MINNESOTA)

COUNTY OF HENNEPIN) SS.

CITY OF PLYMOUTH )

I, the undersigned, being the duly qualified and appointed City Clerk of the City of Plymouth, Minnesota, hereby certify that I have carefully compared the foregoing resolution adopted at a regular meeting of the City Council of said City held on April 1, 1991, with the original thereof on file in my office, and the same is a full, true, and complete transcription thereof.

WITNESS my hand officially as such City Clerk and the corporate seal of the City this 4th day of April, 1991.



---

Laurie Rauenhorst  
City Clerk

REC'D. BY  
MAB APR 05 1991

AREA A

D-274/A-4841

ANNEX TO CITY OF PLYMOUTH

~~DETACH FROM CITY OF MAPLE GROVE~~

That part of the South 1/2 of the Southeast 1/4 of Section 34, Township 119, Range 22 lying Southerly of the centerline of County Highway No. 10 and Easterly of Interstate I-494.

62,700 sq. ft. or 1.44 ac.

AREA B

D-274/A-4841

ANNEX TO CITY OF PLYMOUTH

~~DETACH FROM CITY OF MAPLE GROVE~~

The South 45 feet of Outlot D, Maple Grove Center First Addition, and also that part of Quinwood Lane lying 40 feet Easterly of the South 45 feet of Outlot D, Maple Grove Center First Addition.

13,050 sq. ft. or 0.30 ac.

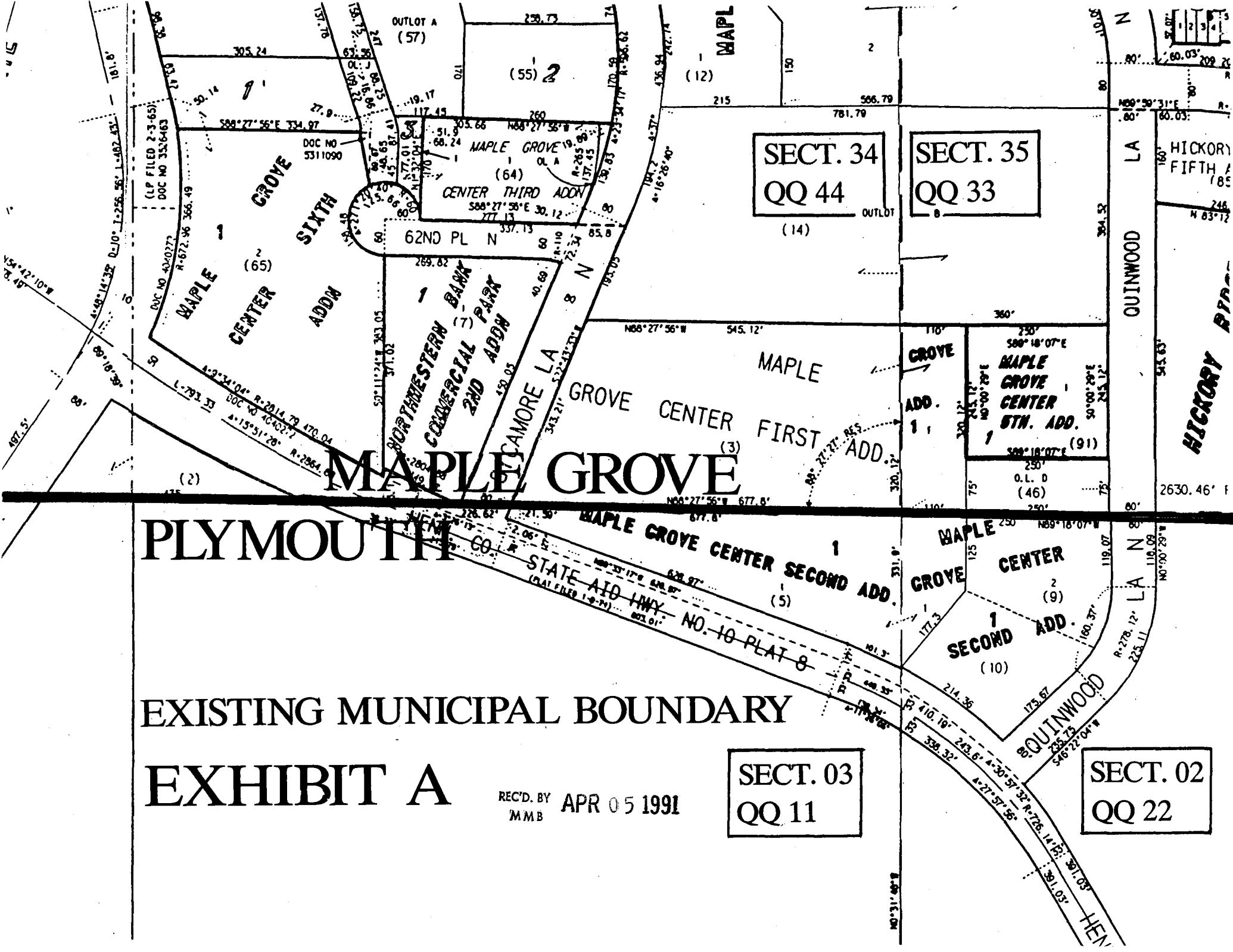
AREA C

D-273/A-4840

~~\_\_\_\_\_~~  
~~\_\_\_\_\_~~

Beginning at the Northwest plat corner of Maple Grove Center Second Addition; thence Northeasterly along North line of said plat to the most Northeasterly corner of Lot 1, Block 1 of said plat; thence Southerly along the Easterly lot line to the Easterly angle point of Lot 1, Block 1 of said plat; thence continue Southwesterly along the most Southeasterly lot line of Lot 1, Block 1 of said plat and its extension to a point on the Southerly plat line of said plat, which also is centerline of County Highway No. 10; thence Northwesterly along the South plat line and also the centerline of County Highway No. 10 to the Northwest plat corner of said plat, which is also point of termination.

163,600 sq. ft. or 3.75 ac.



PLYMOUTH CO.

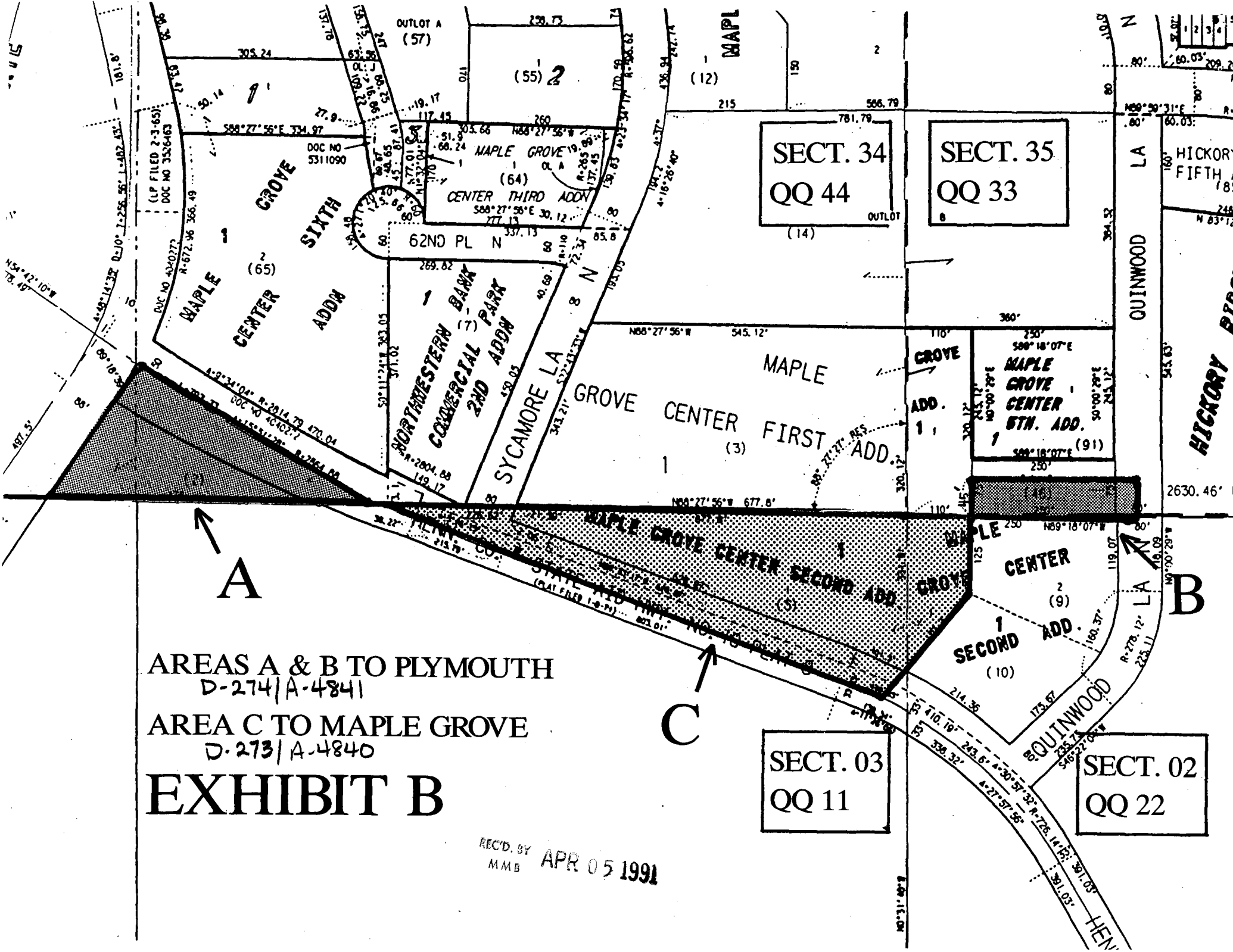
EXISTING MUNICIPAL BOUNDARY

EXHIBIT A

REC'D. BY APR 05 1991  
MMB

SECT. 03  
QQ 11

SECT. 02  
QQ 22



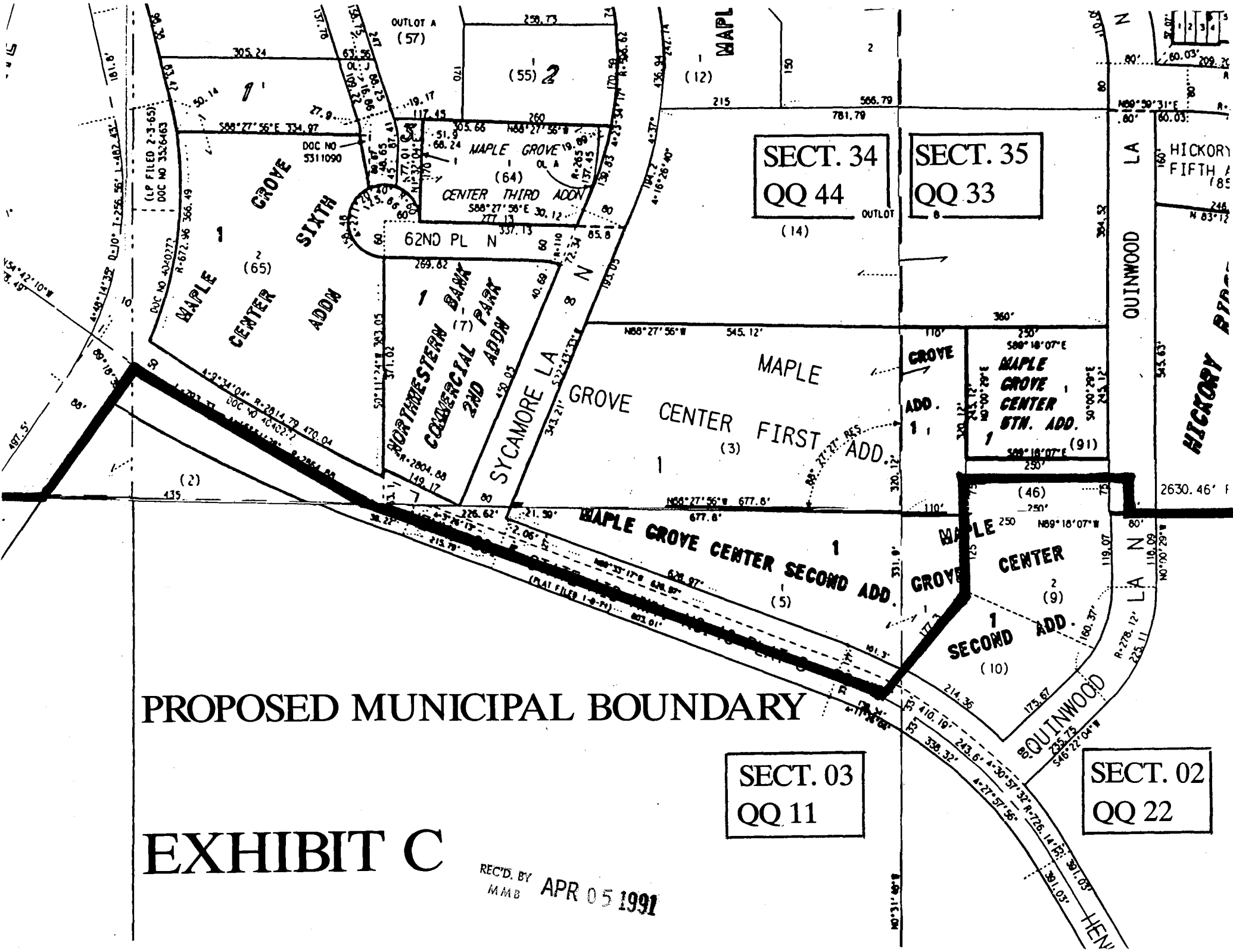
AREAS A & B TO PLYMOUTH  
D-274/A-4841

AREA C TO MAPLE GROVE  
D-273/A-4840

# EXHIBIT B

REC'D. BY  
MMB APR 05 1991





PROPOSED MUNICIPAL BOUNDARY

EXHIBIT C

REC'D. BY  
MMB APR 05 1991

SECT. 34  
QQ 44

SECT. 35  
QQ 33

SECT. 03  
QQ 11

SECT. 02  
QQ 22

Maple Grove Center Sixth Addn (65)  
Maple Grove Center Third Addn (64)  
Maple Grove Center First Addn (3)  
Maple Grove Center Second Addn (5)  
Maple Grove Center 5th Addn (91)  
Maple Grove Center (9)  
Maple Grove Center Second Addn (10)  
Northwestern Bank Commercial Park 2nd Addn  
Sycamore LA  
Quinwood LA  
Hickory Blvd  
Hickory Fifth (785)  
Maple Grove Center 1st Addn  
Maple Grove Center 2nd Addn  
Maple Grove Center 3rd Addn  
Maple Grove Center 4th Addn  
Maple Grove Center 5th Addn  
Maple Grove Center 6th Addn  
Maple Grove Center 7th Addn  
Maple Grove Center 8th Addn  
Maple Grove Center 9th Addn  
Maple Grove Center 10th Addn  
Maple Grove Center 11th Addn  
Maple Grove Center 12th Addn  
Maple Grove Center 13th Addn  
Maple Grove Center 14th Addn  
Maple Grove Center 15th Addn  
Maple Grove Center 16th Addn  
Maple Grove Center 17th Addn  
Maple Grove Center 18th Addn  
Maple Grove Center 19th Addn  
Maple Grove Center 20th Addn  
Maple Grove Center 21st Addn  
Maple Grove Center 22nd Addn  
Maple Grove Center 23rd Addn  
Maple Grove Center 24th Addn  
Maple Grove Center 25th Addn  
Maple Grove Center 26th Addn  
Maple Grove Center 27th Addn  
Maple Grove Center 28th Addn  
Maple Grove Center 29th Addn  
Maple Grove Center 30th Addn  
Maple Grove Center 31st Addn  
Maple Grove Center 32nd Addn  
Maple Grove Center 33rd Addn  
Maple Grove Center 34th Addn  
Maple Grove Center 35th Addn  
Maple Grove Center 36th Addn  
Maple Grove Center 37th Addn  
Maple Grove Center 38th Addn  
Maple Grove Center 39th Addn  
Maple Grove Center 40th Addn  
Maple Grove Center 41st Addn  
Maple Grove Center 42nd Addn  
Maple Grove Center 43rd Addn  
Maple Grove Center 44th Addn  
Maple Grove Center 45th Addn  
Maple Grove Center 46th Addn  
Maple Grove Center 47th Addn  
Maple Grove Center 48th Addn  
Maple Grove Center 49th Addn  
Maple Grove Center 50th Addn  
Maple Grove Center 51st Addn  
Maple Grove Center 52nd Addn  
Maple Grove Center 53rd Addn  
Maple Grove Center 54th Addn  
Maple Grove Center 55th Addn  
Maple Grove Center 56th Addn  
Maple Grove Center 57th Addn  
Maple Grove Center 58th Addn  
Maple Grove Center 59th Addn  
Maple Grove Center 60th Addn  
Maple Grove Center 61st Addn  
Maple Grove Center 62nd Addn  
Maple Grove Center 63rd Addn  
Maple Grove Center 64th Addn  
Maple Grove Center 65th Addn  
Maple Grove Center 66th Addn  
Maple Grove Center 67th Addn  
Maple Grove Center 68th Addn  
Maple Grove Center 69th Addn  
Maple Grove Center 70th Addn  
Maple Grove Center 71st Addn  
Maple Grove Center 72nd Addn  
Maple Grove Center 73rd Addn  
Maple Grove Center 74th Addn  
Maple Grove Center 75th Addn  
Maple Grove Center 76th Addn  
Maple Grove Center 77th Addn  
Maple Grove Center 78th Addn  
Maple Grove Center 79th Addn  
Maple Grove Center 80th Addn  
Maple Grove Center 81st Addn  
Maple Grove Center 82nd Addn  
Maple Grove Center 83rd Addn  
Maple Grove Center 84th Addn  
Maple Grove Center 85th Addn  
Maple Grove Center 86th Addn  
Maple Grove Center 87th Addn  
Maple Grove Center 88th Addn  
Maple Grove Center 89th Addn  
Maple Grove Center 90th Addn  
Maple Grove Center 91st Addn  
Maple Grove Center 92nd Addn  
Maple Grove Center 93rd Addn  
Maple Grove Center 94th Addn  
Maple Grove Center 95th Addn  
Maple Grove Center 96th Addn  
Maple Grove Center 97th Addn  
Maple Grove Center 98th Addn  
Maple Grove Center 99th Addn  
Maple Grove Center 100th Addn