

RECEIVED BY
MAYOR MAR 27 1990

**JOINT RESOLUTION BETWEEN THE CITY OF NORWOOD AND THE CITY OF
YOUNG AMERICA FOR THE CONCURRENT DETACHMENT AND ANNEXATION
OF INCORPORATED LAND PURSUANT TO MINNESOTA STATUTE §414.061**

WHEREAS, the City of Norwood desires to detach a parcel of land approximately 4.7 acres in size and legally described as follows:

That part of the Northwest Quarter of Section 14, Township 115, Range 26, Carver County, Minnesota, lying north of the following line:

Beginning at a point on the East line of said Northwest Quarter of Section Fourteen (14) approximately 41.75 feet South of the Northeast corner of said Northwest Quarter which point is also the South right-of-way line of the public road now in place, thence Westerly along the South right-of-way line of said public road to a point on the West line of said Northwest Quarter of Section Fourteen (14) which point is approximately 231.75 feet South of the Northwest corner of said Section Fourteen (14).

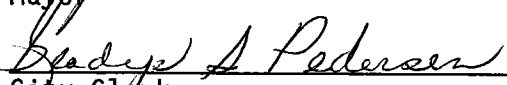
WHEREAS, the above-described property abuts the City of Young America and the City of Young America desires to annex said property;

NOW THEREFORE, IT IS HEREBY RESOLVED that this joint resolution of the City of Norwood and the City of Young America shall be submitted to the Minnesota Municipal Board with the intent and request that the Municipal Board concurrently detach the above-described property from the City of Norwood and annex the same to the City of Young America at the earliest possible date.

Approved by the City of Norwood this 26th day of March, 1990.

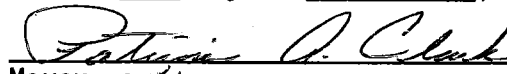


Mayor

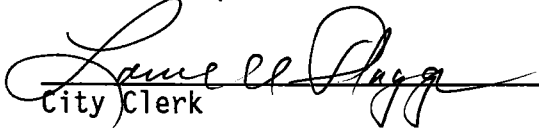


City Clerk

Approved by the City of Young America this 26 day of March, 1990.



Mayor - acting

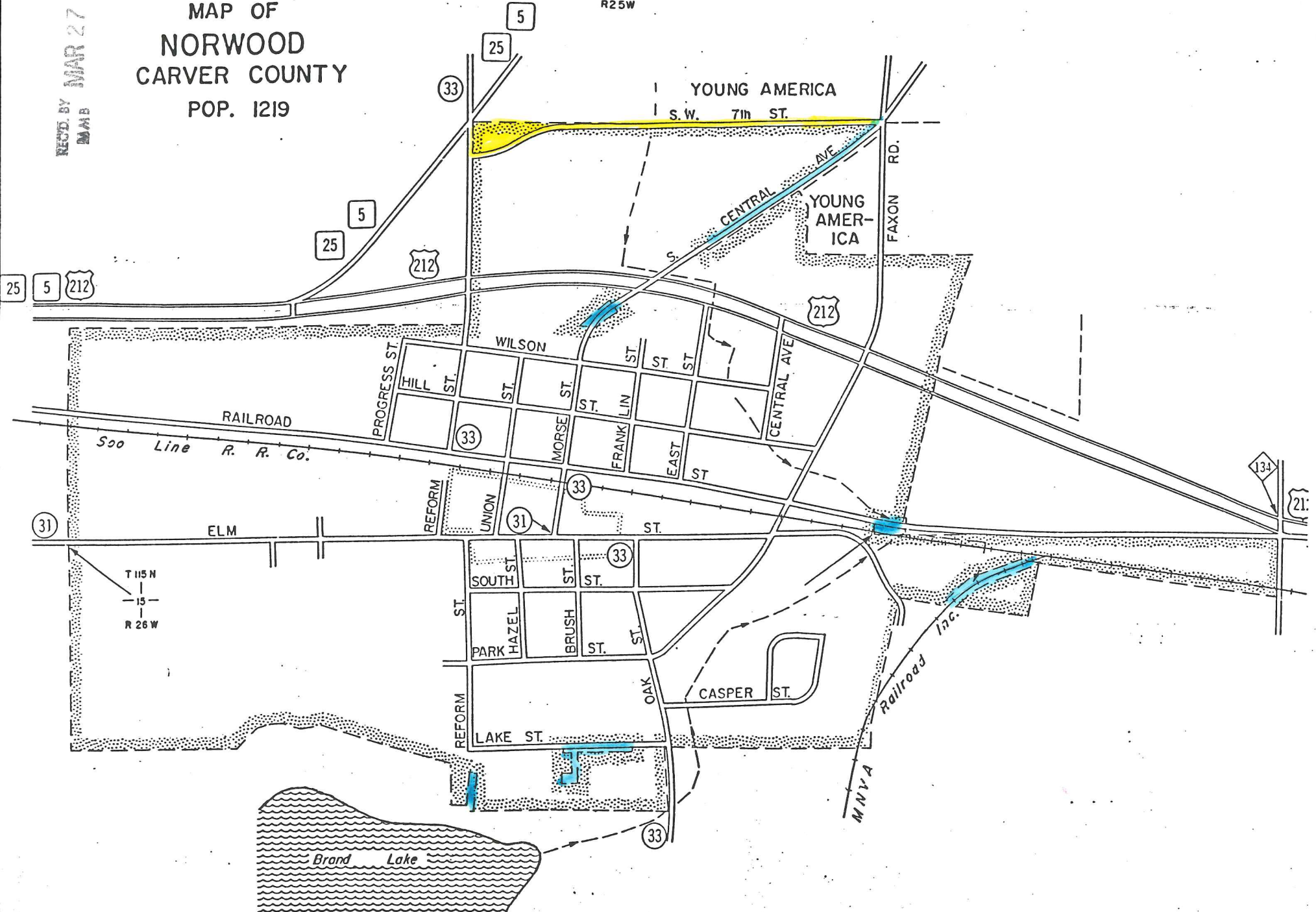


City Clerk

REC'D. BY MAR 27 1990
MAMB

MAP OF NORWOOD CARVER COUNTY POP. 1219

23 | 24
26 | 25
T116N
R25W



T 115 N
15
R 26 W

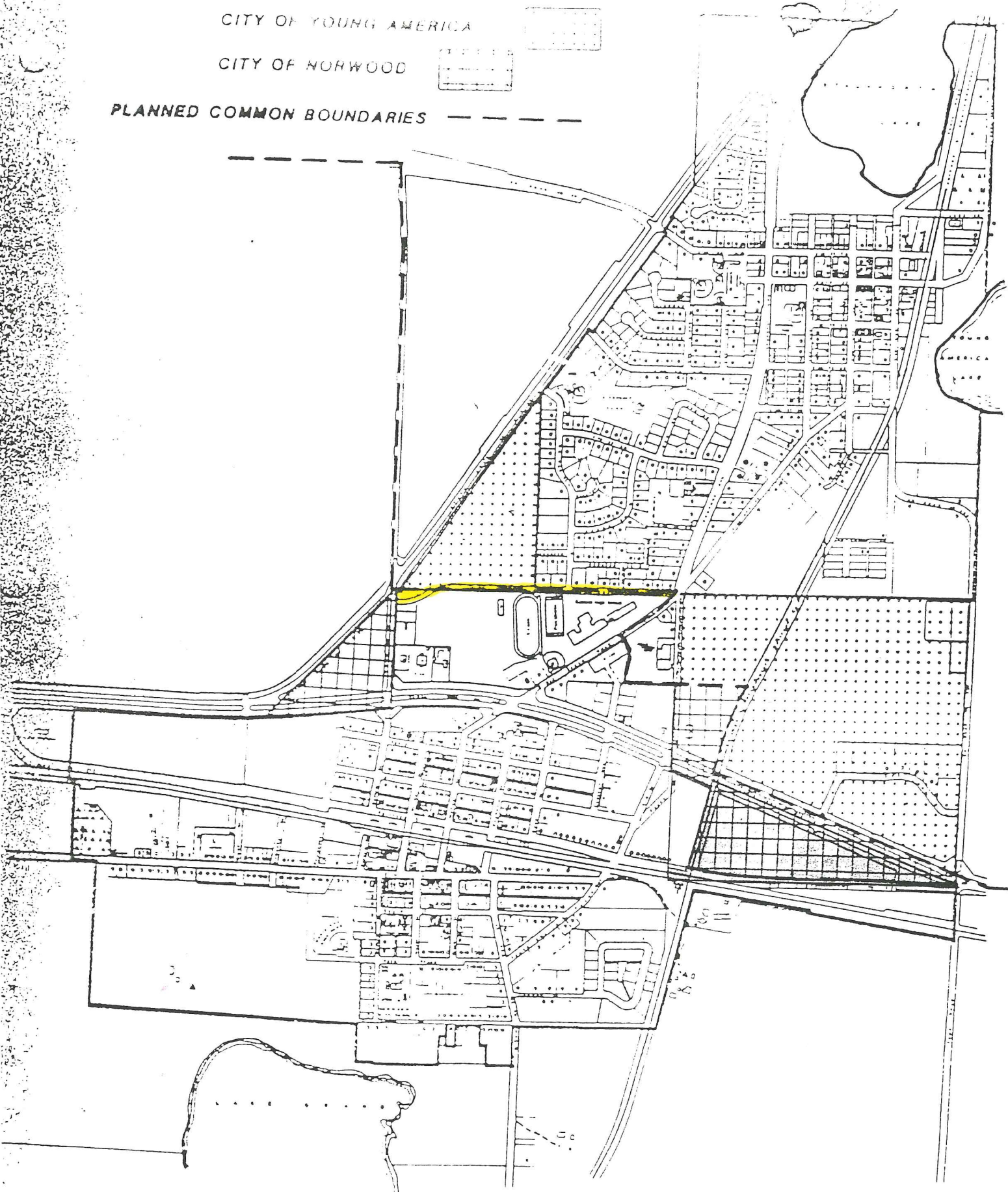
Brand Lake

REC'D BY MMB MAR 27 1990

AREAS TO BE ANNEXED TO:
CITY OF YOUNG AMERICA

CITY OF NORWOOD

PLANNED COMMON BOUNDARIES - - - - -



RECORDED BY MAR 27 1990
MAB

