

Resolution No. 1989-7-217

JOINT RESOLUTION FOR CONCURRENT DETACHMENT AND ANNEXATION OF INCORPORATED LAND BY AND BETWEEN THE CITY OF ST. CLOUD AND THE CITY OF WAITE PARK.

WHEREAS, the City of St. Cloud ("St. Cloud") and the City of Waite Park ("Waite Park") desire to provide for the concurrent detachment and annexation of areas of St. Cloud and Waite Park to the other City; and

WHEREAS, the lands in question consist of railroad right-of-ways running along the boundary of St. Cloud and Waite Park; and

WHEREAS, St. Cloud and Waite Park wish to create a uniform boundary between the respective cities, and recognize that this can best be accomplished by concurrent detachment and annexation of properties.

NOW, THEREFORE, BE IT RESOLVED BY THE COUNCIL OF THE CITY OF ST. CLOUD AND THE COUNCIL OF THE CITY OF WAITE PARK:

1. Description of Lands to be Detached from the City of St. Cloud and Annexed to the City of Waite Park:

That part of Township 124 North, Range 28 West, Stearns County, Minnesota, described as follows:

That part of the SW 1/4 of Section 8 presently located within the corporate limits of the City of St. Cloud and lying easterly of the thread of the Sauk River and southerly of the centerline of the Burlington Northern Railroad right-of-way.

2. Description of Lands to be Detached from the City of Waite Park and Annexed to the City of St. Cloud:

That part of Township 124 North, Range 28 West, Stearns County, Minnesota, described as follows:

That part of the SW 1/4 of Section 8 presently located within the corporate limits of the City of Waite Park and lying easterly of the thread of the Sauk River and northerly of the centerline of the Burlington Northern Railroad right-of-way.

Adopted this 17th day of July, 1989.

CITY OF ST. CLOUD

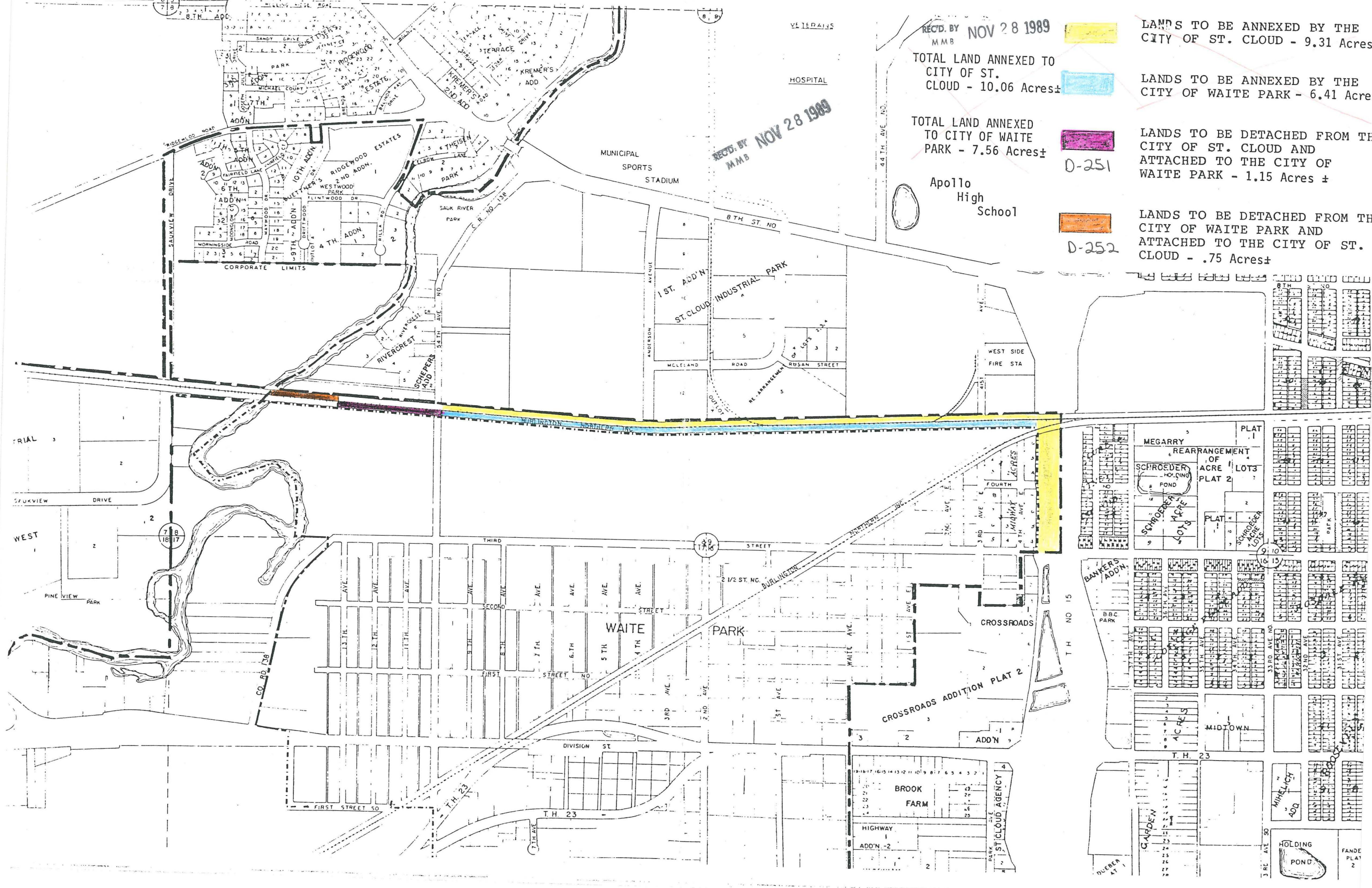
CITY OF WAITE PARK

Charles B. Wickham  
Chairperson, City Council

Alvin R. Smith  
Chairperson, City Council

Angie C. Engdahl  
City Clerk

Jeffrey J. Baird  
City Clerk



REC'D. BY NOV 28 1989  
MMB

TOTAL LAND ANNEXED TO  
CITY OF ST.  
CLOUD - 10.06 Acres ±

TOTAL LAND ANNEXED  
TO CITY OF WAITE  
PARK - 7.56 Acres ±

Apollo  
High  
School

LANDS TO BE ANNEXED BY THE  
CITY OF ST. CLOUD - 9.31 Acres

LANDS TO BE ANNEXED BY THE  
CITY OF WAITE PARK - 6.41 Acres

LANDS TO BE DETACHED FROM THE  
CITY OF ST. CLOUD AND  
ATTACHED TO THE CITY OF  
WAITE PARK - 1.15 Acres ±

LANDS TO BE DETACHED FROM THE  
CITY OF WAITE PARK AND  
ATTACHED TO THE CITY OF ST.  
CLOUD - .75 Acres ±

D-251

D-252

REC'D. BY NOV 28 1989  
MMB

