

ORDINANCE NO. 544

**AN ORDINANCE EXTENDING THE CORPORATE LIMITS
OF THE CITY OF GLENCOE TO INCLUDE CERTAIN
UNINCORPORATED UNPLATTED LAND
ABUTTING UPON THE CITY LIMITS**

WHEREAS, a certain Petition for Annexation dated August 5, 2008, requesting annexation of the territory hereinafter described was duly presented to the Council on the 4th day of August, 2008; and

WHEREAS, the land described in the petition is 4.62 acres in area, abuts the City of Glencoe's incorporated area and no part of which is included within the limits of an incorporated city, village or borough; and

WHEREAS, the petition was signed by all the owners of said lands; and

WHEREAS, any objections to the annexation have been waived by the Helen Township Board, or any other governing body; and

WHEREAS, a hearing is required by law on the proposed annexation and was heard on September 2, 2008; and

WHEREAS, the land described in the petition abuts upon the City limits at the Eastern boundary thereof.

THE CITY COUNCIL OF GLENCOE, MINNESOTA ORDAINS:

Section 1: The City Council hereby determines (1) that the annexation will be in the best interest of the City and the territory affected; (2) the land abuts the municipality and the area to be annexed is 120 acres or less; (3) the area to be annexed is not presently served by public wastewater facilities or public wastewater facilities are not otherwise

available; and (4) the municipality received a petition for annexation from the property owner of the land.

Section 2: Territory Annexed. Pursuant to Minn. Stat. §414.033, Subd. 2(3), the corporate limits of the City are hereby extended to include the unplatted land described as follows and the same is hereby annexed to and include within the City as effectually as if it had originally been a part thereof:

See attached legal descriptions.

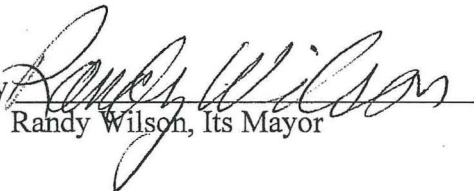
Section 3: Filing. The City Clerk is hereby directed to file certified copies of this Ordinance with the Director of the Office of Strategic and Long Range Planning, the Secretary of State, McLeod County Auditor, Helen Township Clerk and McLeod County Recorder.

Section 4: Effective Date. This ordinance takes effect upon its passage and publication and the filing of the certified copies as directed in Section 3, and after approval by the Office of Strategic and Long Range Planning.


Adopted this 15th day of September, 2008.

CITY OF GLENCOE

By


Randy Wilson, Its Mayor

ATTEST:


Mark D. Larson, City Administrator

AGLMEP0801.00

REC'D BY
MMB

OCT 15 2008

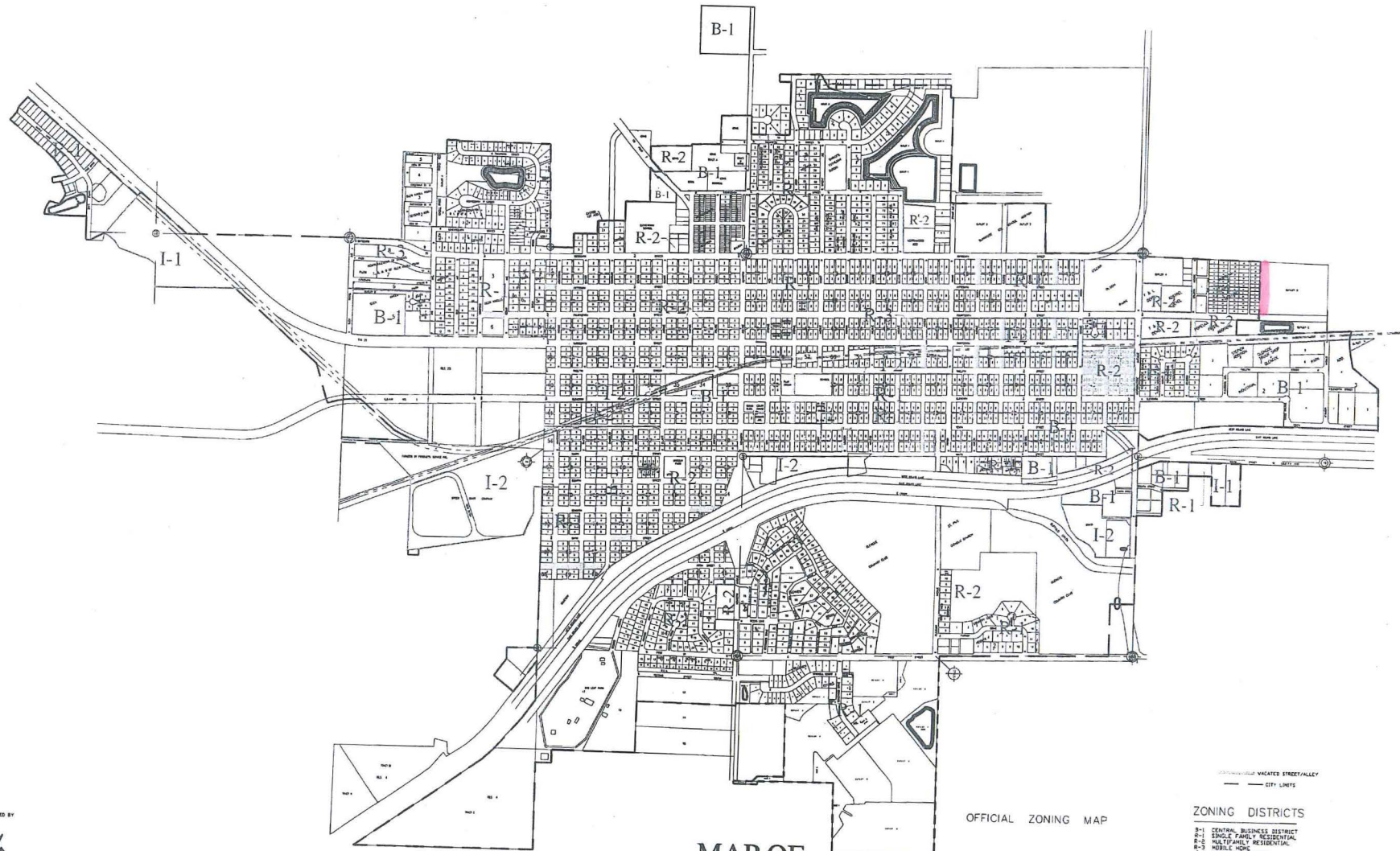
ANNEXATION DESCRIPTION

The West 286.50 feet of Outlot B, PANTHER HEIGHTS FIRST ADDITION, City of Glencoe,
McLeod County, Minnesota, according to the recorded plat thereof.

22.140.0790

U:\FJ\G\Glmep\080100\7-ca\Annexation\Annexation Descr 9-22-08

T-48664



MAP OF CITY OF GLENCOE, MINNESOTA

OFFICIAL ZONING MAP

ZONING DISTRICTS

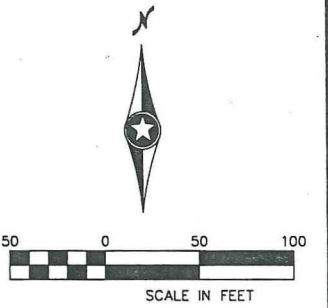
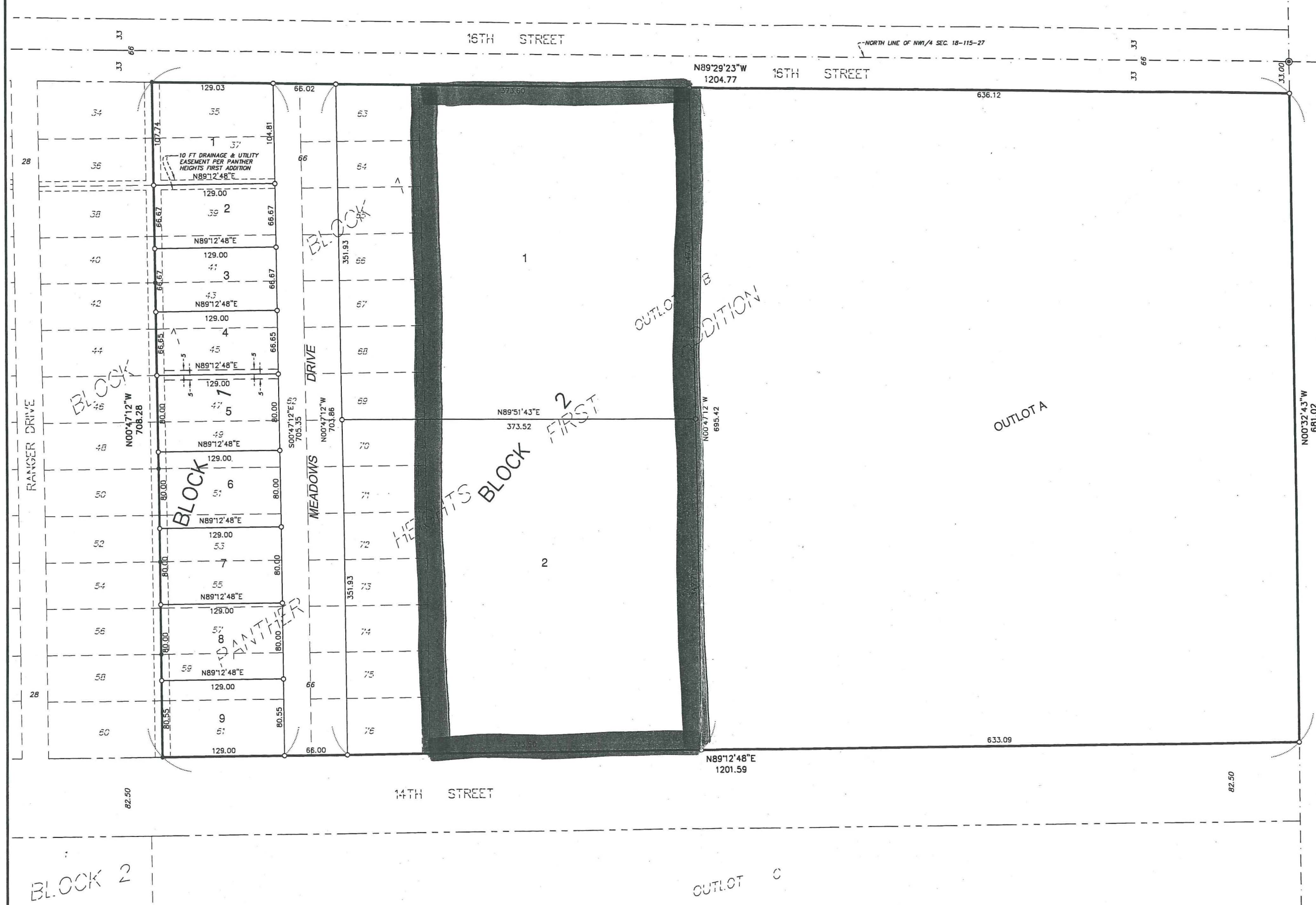
- B-1 CENTRAL BUSINESS DISTRICT
- R-1 SINGLE FAMILY RESIDENTIAL
- R-2 NEIGHBORHOOD RESIDENTIAL
- I-1 MOBILE HOME
- I-2 LIMITED INDUSTRIAL
- I-2 GENERAL INDUSTRIAL

PREPARED BY



SHOOK EGAN HANSEN INC.
ENGINEERS, ARCHITECTS, PLANNERS, SURVEYORS
200 MAIN AVE., 4TH FL., PO BOX 778, GLENCOE, MN 55324
PH: 507.237.2624 FAX: 507.237.2518

PANTHER HEIGHTS SECOND ADDITION



- DENOTES IRON FOUND
- DENOTES IRON PIPE SET
- ⊙ DENOTES MCLEOD COUNTY MONUMENT

BEARING ORIENTATION:
IS BASED ON THE MCLEOD COUNTY
COORDINATE SYSTEM.

DRAINAGE AND UTILITY EASEMENTS ARE
SHOWN AS THUS:



BEING 8 FEET IN WIDTH AND ADJOINING LOT
LINES, UNLESS OTHERWISE INDICATED ON
THE PLAT.





SMALL CITY & BIG FUTURE

City of Glencoe ♦ 630 10th Street East ♦ Glencoe, Minnesota 55336
Phone (320) 864-5586 ♦ FAX (320) 864-6405

December 2, 2008

REC'D BY
MMB

DEC 09 2008

Ms. Christine Scotillo, Executive Director
Municipal Boundary Adjustments
Minnesota office of Administrative Hearings
PO Box 64620
600 N. Robert Street
St. Paul, MN 55101

Re: City of Glencoe/Helen Township (Ordinance No. 544; Panther Heights 2nd Addition, 4.62 acres).

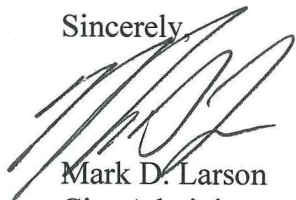
Dear Ms. Scotillo:

I am writing to inform you of the City Council's recommendation for reimbursement of the property taxes to Helen Township for the above annexation. At their regular meeting of December 1, 2008, the City Council voted to reimburse Helen Township a total of \$395.50, to be paid in installments of \$197.75 the first year and \$197.75 the second year. This dollar amount was reached by taking the 2008 property taxes of \$113.00, paid to Helen Township, and multiplying it by 90%, 70%, 50%, 30% and 10%.

There are no special assessments due to Helen Township for this parcel.

Please let me know if you have any questions or need additional information. Thank you for your assistance.

Sincerely,



Mark D. Larson
City Administrator