

CITY OF BLUE EARTH, MINNESOTA

ORDINANCE NO. 07-03

**AN ORDINANCE EXTENDING THE CORPORATE
LIMITS OF THE CITY OF BLUE EARTH, MINNESOTA
TO INCLUDE CERTAIN UNINCORPORATED CITY OWNED
LAND NOT EXCEEDING 60 ACRES IN AREA
ABUTTING UPON THE CITY LIMITS.**

WHEREAS, the City of Blue Earth is considering the annexation of the following tracts of real property described as follows:

That portion of Block Fourteen (14) lying East of the center of the East fork of the Blue Earth River, Block Ten (10), Block Fifteen (15) and Lot Two (2) of Block Eleven (11) of School Subdivision of the Northwest Quarter (NW1/4) of Section Sixteen (16) in Township One Hundred Two (102) North of Range Twenty-seven (27) West of the Fifth Principal Meridian in the County of Faribault and State of Minnesota

WHEREAS, said real property is currently solely owned by the City of Blue Earth, but is located outside the current corporate limits of the City of Blue Earth.

WHEREAS, no objections to the annexation have been received from the town board, or the government body of any municipality whose boundaries abut upon the boundaries of the land to be annexed; and

WHEREAS, a hearing was duly held by the governing body of the City of Blue Earth, Minnesota, on the proposed annexation after at least 30 days' written notice by mail pursuant to statute; and

WHEREAS, the land described in the petition abuts upon the city limits at the easterly boundary thereof, is approximately 33 acres in size and none of it is presently included within the corporate limits of any incorporated city;

WHEREAS, the land is or is about to become urban or suburban in character; is school subdivision land less than 60 acres in size and is not presently served by public sewer facilities with no current population;

NOW THEREFORE:

The council of the City of Blue Earth, Minnesota ordains:

Section 1. The city council hereby determines (1) that the territory described herein abuts

upon the city limits and is or is about to become urban or suburban in character; and (2) that none of the territory is now included within the limits of any city.

Section 2. The population of the territory is none.

Section 3. Territory annexed. The corporate limits of the city are hereby extended to include the school subdivision land described as follows and the same is hereby annexed to and included within the city as effectually as if it had originally been a part thereof;

Real property in the County of Faribault, State of Minnesota described as follows:

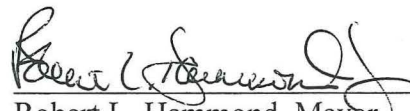
That portion of Block Fourteen (14) lying East of the center of the East fork of the Blue Earth River, Block Ten (10), Block Fifteen (15) and Lot Two (2) of Block Eleven (11) of School Subdivision of the Northwest Quarter (NW1/4) of Section Sixteen (16) in Township One Hundred Two (102) North of Range Twenty-seven (27) West of the Fifth Principal Meridian in the County of Faribault and State of Minnesota

Section 4. Filing. The city clerk is hereby directed to file certified copies of this ordinance with the Minnesota Office of Strategic and Long Range Planning, the Secretary of State, the Town Clerk, and the County Auditor.

Section 5. Zone. The City Administrator is hereby directed to designate said annexed property as AG agricultural property and mark it as such on the official zoning map for the City of Blue Earth.

Section 5. Effective Date. This ordinance takes effect upon its passage and publication and the filing of the certified copies as directed in Section 4, and approval of the ordinance by the Director of the Minnesota Office of Strategic and Long Range Planning.

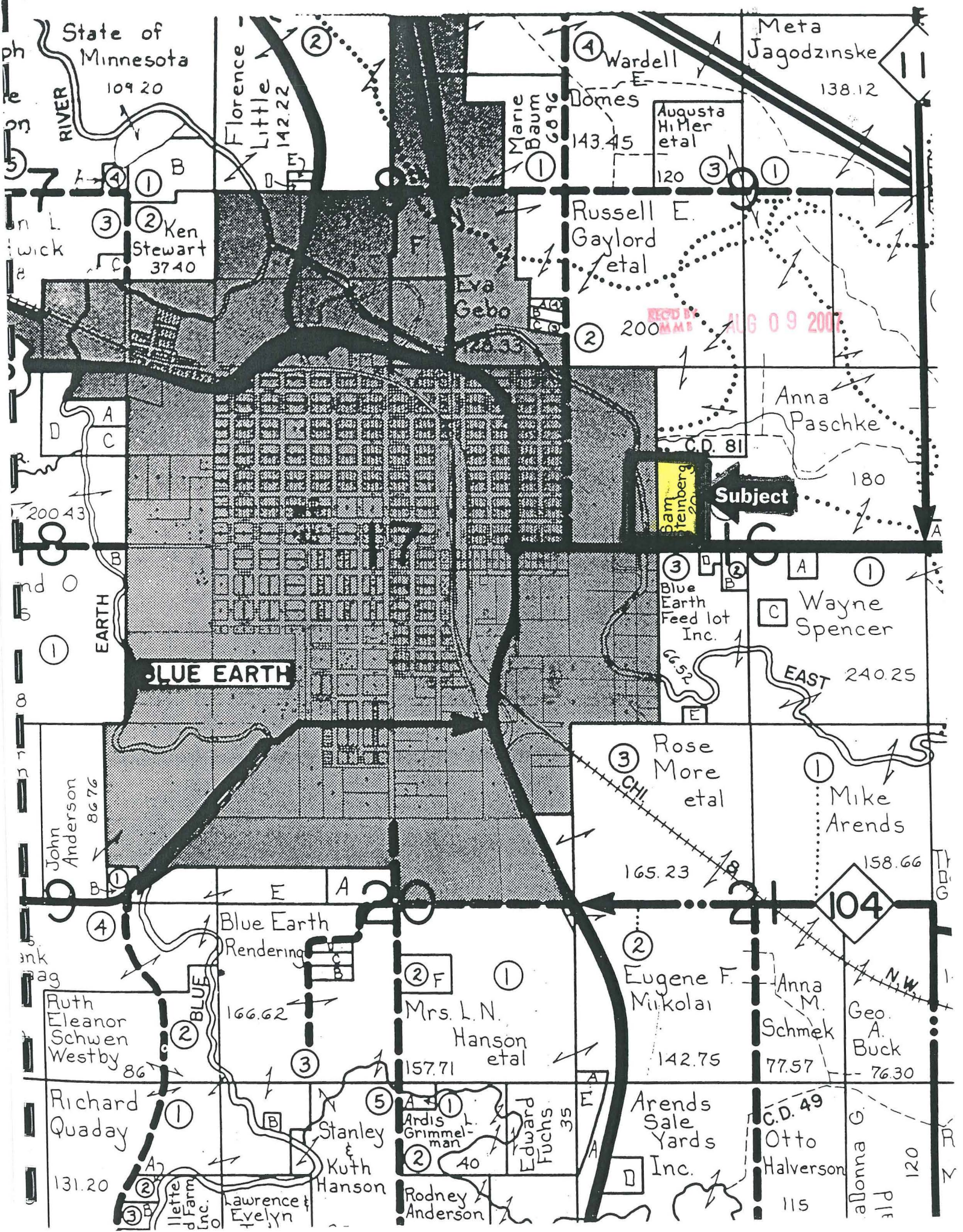
Adopted by the council of the City of Blue Earth, Minnesota this 20th day of February, 2007.


Robert L. Hammond, Mayor

ATTEST:


Benjamin Martig

Published in Faribault County Register, a legal newspaper in the State of Minnesota, on the 26th day of February, 2007.





REC'D BY
MMB JUL 02 2007