

**AMENDED
ORDINANCE NO. 479**

REC'D BY
MMB

OCT 04 2007

**AN ORDINANCE ANNEXING LAND OWNED BY
DONOVAN GUIDA AND LYNETTE GUIDA AND
RICHARD BRADOW AND CYNTHIA BRADOW
TO THE CITY OF PARK RAPIDS, HUBBARD COUNTY, MINNESOTA
PURSUANT TO MINNESOTA STATUTES 414.033, SUBD 2(1)**

**THE CITY COUNCIL OF THE CITY OF PARK RAPIDS, HUBBARD COUNTY, MINNESOTA,
DOES HEREBY ORDAIN:**

Section 1: Donovan and Lynette Guida and Richard and Cynthia Bradow are the owners of lands located, abutting, and surrounded by the existing city limits and located in Todd Township, Hubbard County, Minnesota and attached as Exhibit A.

Section 2: All of the property owners have signed a petition requesting that their respective properties be annexed to the City of Park Rapids.

Section 3: There are no special assessments against the properties affected by this ordinance.

Section 4: Park Rapids City shall reimburse Todd Township in accordance with M.S. 414.036 in substantially equal payments over not less than two nor more than eight years from the time of annexation.

Section 5: Notice of Hearing was given and a hearing was held in conformance with Minnesota Statutes 414.033, Subd. 2b on April 24th, 2007.

Section 6: That the corporate limits of the City of Park Rapids are hereby extended to include the unplatted land, described on the attachments to this ordinance, said parcels containing 56 acres, more or less.

Section 7: The City Clerk is hereby directed to make the statutory filings with the Department of Administration, Municipal Boundary Adjustments, and the affected Hubbard County and Todd Township departments and officers.

Adopted this 11th day of September 2007.

[Seal]

Date 09-12-07

Date September 12, 2007

CITY OF PARK RAPIDS:

Nancy J. Carroll

Nancy J. Carroll
It's Mayor

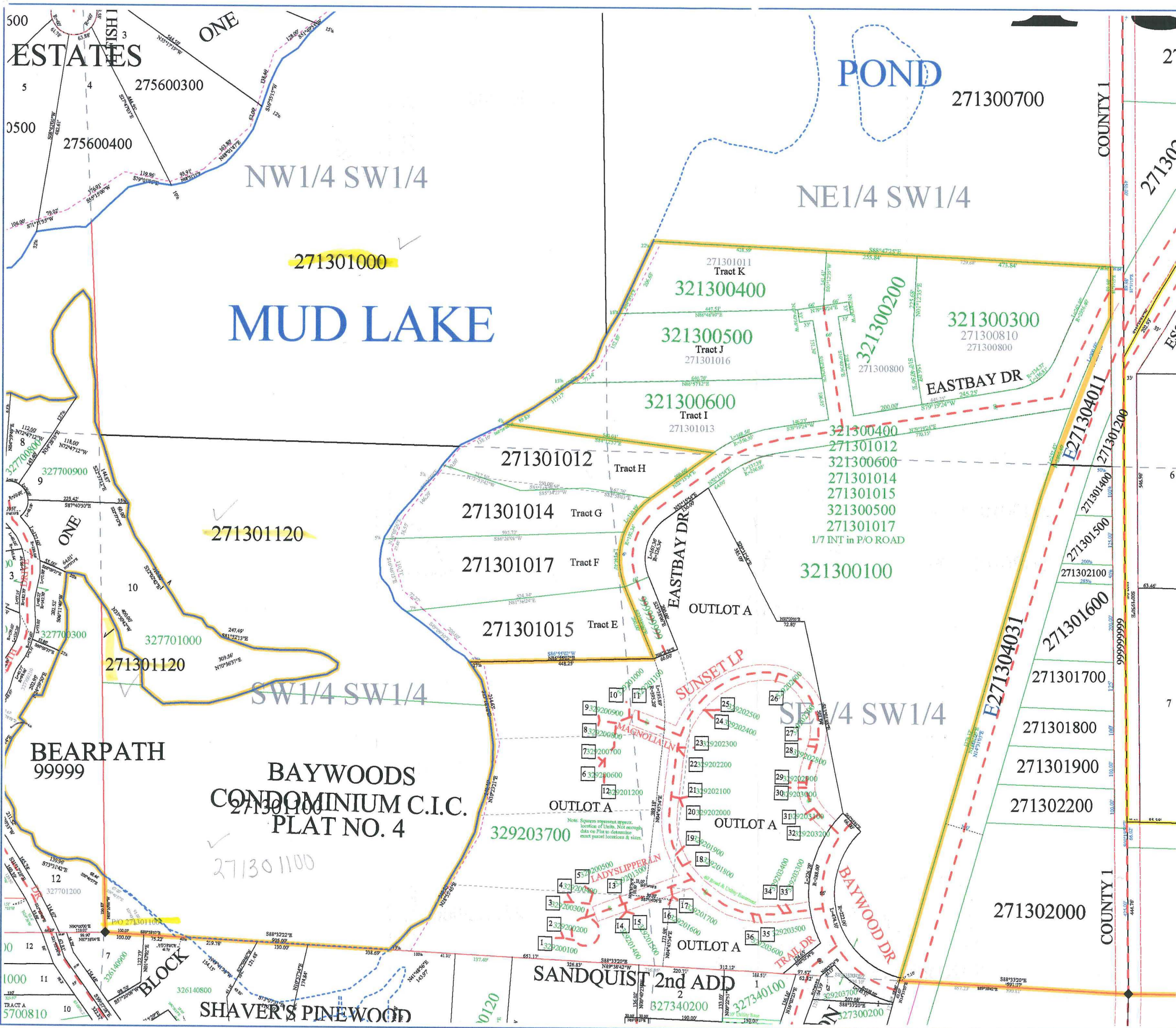
Margie M. Vik

Margie M. Vik
It's City Clerk

Attest: I certify the above ordinance to be a true and correct copy of the original ordinance on file in the office of the City Clerk of Park Rapids.

City Clerk: Margie M. Vik

Date: September 18, 2007



**T140N-R35W
Todd Twp**

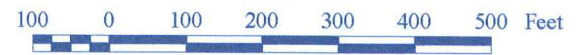
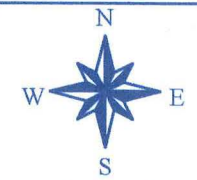
Sec 13

REC'D BY
MADP JUN 14 2007

LEGEND

- Plat Boundary
- Parcel Boundary - Sec Line
- Parcel Boundary - Forty or Lot Line
- Parcel Boundary - Parcel Line
- Parcel Boundary - Water
- Lake or Pond not a Parcel Boundary
- Orig Sec, Forty or Gov't Lot Line
- Orig Platted Lot or Tract Line
- Road R/W
- Road CL
- Rec Trail CL
- 27xxxxxxx Parcel Number
- City of Park Rapids

Plotted: January 25, 2007



NOTE:
This drawing has been compiled for tax purposes from information on file at the Hubbard County Courthouse.
This map is to be used for reference purposes only and not to be used for boundary location!
Hubbard County does not assume any liability for errors, omissions or inaccuracies herein contained.

**HUBBARD COUNTY
G.I.S. DEPT.
301 COURT AVE.
PARK RAPIDS, MN 56470
(218)732-2304**