

**TITLE XVII
CHAPTER 192**

**ORDINANCE NO. 127
CITY OF ISLE, MINNESOTA**

**AN ORDINANCE OF THE CITY OF ISLE, MINNESOTA ANNEXING LAND
LOCATED IN THE TOWNSHIP OF ISLE HARBOR, MILLE LACS COUNTY,
MINNESOTA PURSUANT TO MINNESOTA STATUTES 414.033,
SUBDIVISION 2 (3)**

WHEREAS, the territory described below is not presently located within the corporate limits of any incorporated city and abuts the corporate limits of the City of Isle, Minnesota; and

WHEREAS, the City of Isle has received a petition for annexation from all property owners of the territory described below; and

WHEREAS, the property to be annexed is less than 60 acres in size; and

WHEREAS, the parcels to be annexed are not currently served by public sewer facilities; and

WHEREAS, a public hearing has been held by the City Council, notice of which was sent by mail at least 30 days prior to the hearing to the town affected by the proposed ordinance and all to all landowners within and contiguous to the area to be annexed:

NOW, THEREFORE, THE CITY COUNCIL OF THE CITY OF ISLE, MILLE LACS COUNTY, MINNESOTA DOES HEREBY ORDAIN:

Section 1. Territory annexed. Pursuant to Minnesota Statutes 414.033, the corporate limits of the City of Isle are hereby extended by annexation of the unplatted property described as follows:

Coopers Outlots, E 358 Feet of Outlot 1, Section 10, Township 42, Range 25.

Section 2. Filing. The City Clerk is directed to file certified copies of this ordinance with the Secretary of State, the County Auditor of Mille Lacs County, the Town Clerk of Isle Harbor Township and Minnesota Planning Municipal Boundary Adjustments.

Section 3. Effective date of annexation. This ordinance takes effect upon its passage, publication and the filing of certified copies as directed in Section 2, and its

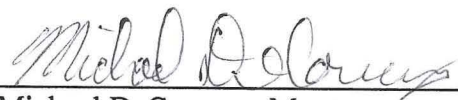
approval by the Minnesota Municipal Board, now known as Minnesota Planning Municipal Boundary Adjustments.

Section 4. Official Map. The City Engineer is directed to change the Official Zoning Map to reflect the new border of the City resulting from annexation of the property and to depict its zoning classification as residential.

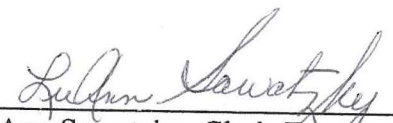
Section 5. Taxes. In the first year following the year when the municipality can first levy on the annexed area and thereafter, property taxes on the annexed land shall be paid to the municipality, but the municipality shall make a cash payment to the township for the period and in accordance with the following schedule:

- a. In the first year following the year the municipality could first levy on the Annexed area, an amount equal to 90% of the property taxes distributed to the town in regard to the annexed area in the last year the property taxes from the annexed area were payable to the town;
- b. In the second year, an amount equal to 70%;
- c. In the third year, an amount equal to 50%;
- d. In the fourth year, an amount equal to 30%; and
- e. In the fifth year, an amount equal to 10%

Adopted by the City of Isle, Mille Lacs County, Minnesota this 10th day of October, 2006.


Michael DeCoursey, Mayor

ATTEST:


LuAnn Sawatzky, Clerk-Treasurer

- Current City Limits

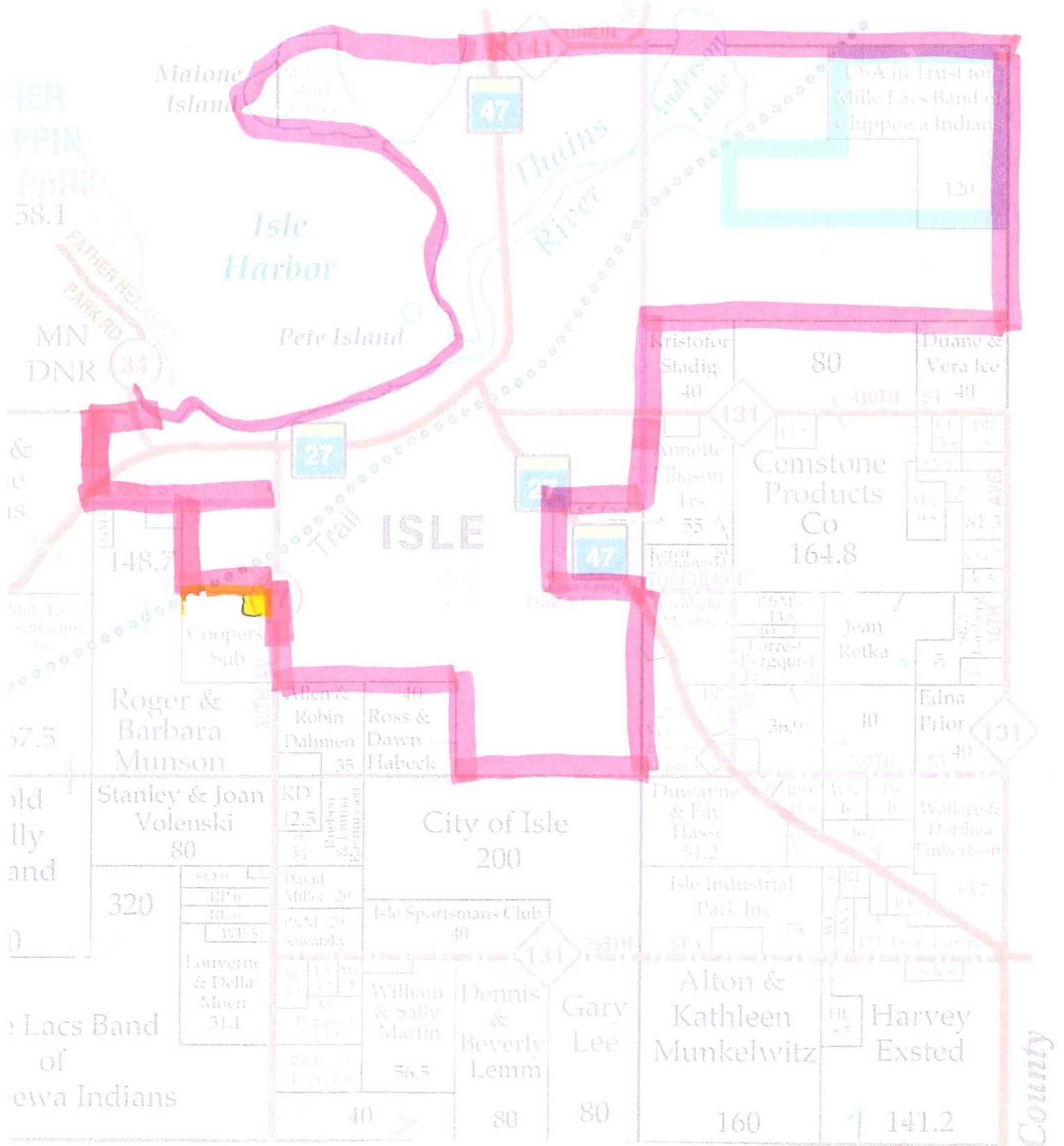
- Area to be annexed

REC'D BY
MME

MAY 02 2007

T.42N. - R.25W.

© 2001 Cloud Cartographics, Inc. St. Cloud, MN 56301

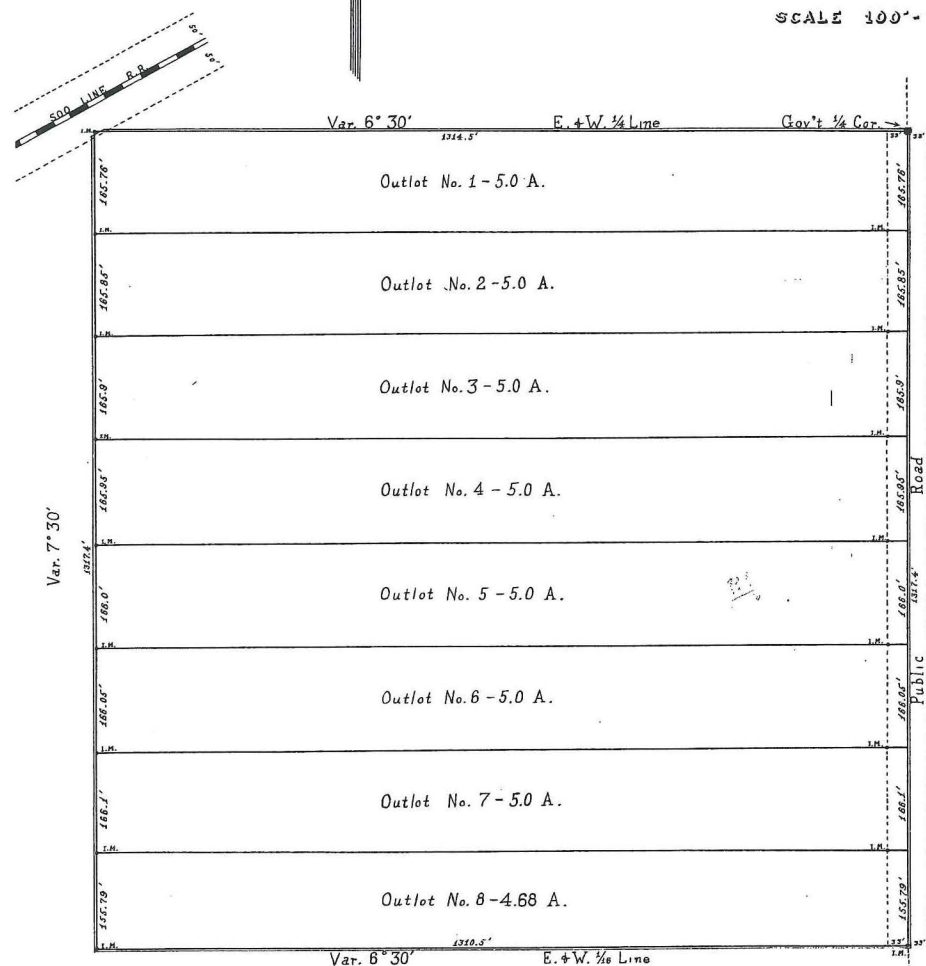


PLAT OF
COOPER'S OUTLOTS
N.E. 1/4 of S.E. 1/4
IN SEC. 10 - T. 42 N. R. 25 W.
MILLE LACS COUNTY
MINNESOTA

SCALE 100' = 1 INCH

REC'D BY
MME

MAY 02 2007



Know All Men By These Presents:—

That we, E.A. Cooper and Hilda O. Cooper, his wife, the owners and proprietors of that certain land situated in the County of Mille Lacs and state of Minnesota and being all that part of the N.E. 1/4 of the S.E. 1/4 of section 10 in township 42 N. range 25 W. lying within the following described boundaries to wit:—Beginning at an iron monument at the northeasterly corner of the N.E. 1/4 of the S.E. 1/4 of section 10 in township 42 N. Range 25 W. thence westerly along the 1/4 line to an iron monument at the northwesterly corner, a distance of 1316.5 feet; thence southerly along the 1/4 line to an iron monument at the southwesterly corner, a distance of 1317.4 feet; thence easterly along the 1/4 line to an iron monument at the southeasterly corner, a distance of 1310.5 feet; thence northerly to the point of beginning, a distance of 1317.4 feet—containing 39.86 acres. Have caused the same to be surveyed and platted into outlots, and hereafter to be known as "Cooper's Outlots"; the land hereby platted being bounded by red lines.

In witness whereof we have hereunto set our hands this 2nd day of August A.D. 1934.

In presence of:

A.W. Gasper County Auditor
R.L. Cooper Hilda O. Cooper

State of Minnesota) ss.
County of Hennepin)

On this 2nd day of August A.D. 1934 personally appeared before me E.A. Cooper and Hilda O. Cooper, his wife, to me personally known to be the persons described in and who executed the foregoing certificate, and acknowledged that they executed the same as their own free act and deed.

W.H. Cooper R.L. Cooper
Notary Public
My Comm. expires 29. 1934

State of Minnesota) ss.
County of Mille Lacs)

I hereby certify that the within plat of "Cooper's Outlots" was duly approved by the Board of County Commissioners of said County at a session of said board held this 7th day of August A.D. 1934.

Also that all taxes levied against the property covered by said plat have been paid.

Albion Moore
County Auditor

State of Minnesota) ss.
County of Mille Lacs)

I hereby certify that I have surveyed and platted the land described on this plat as "Cooper's Outlots"; that the plat is a correct representation of said survey; that all distances are correctly shown on the plat in feet and decimals of a foot; that the monuments for the guidance of future surveys have been correctly placed in the ground as shown on the plat; that the outside boundary lines are correctly designated on the plat by a red line; that the topography of the land is correctly shown on the plat and there are no public highways to be designated on said plat other than as shown thereon.

C.C. McKen
Surveyor

The above certificate of surveyor Wilkes was subscribed and sworn to before me this 7th day of August A.D. 1934.

Albion Moore
County Auditor

State of Minnesota) ss.
County of Mille Lacs)

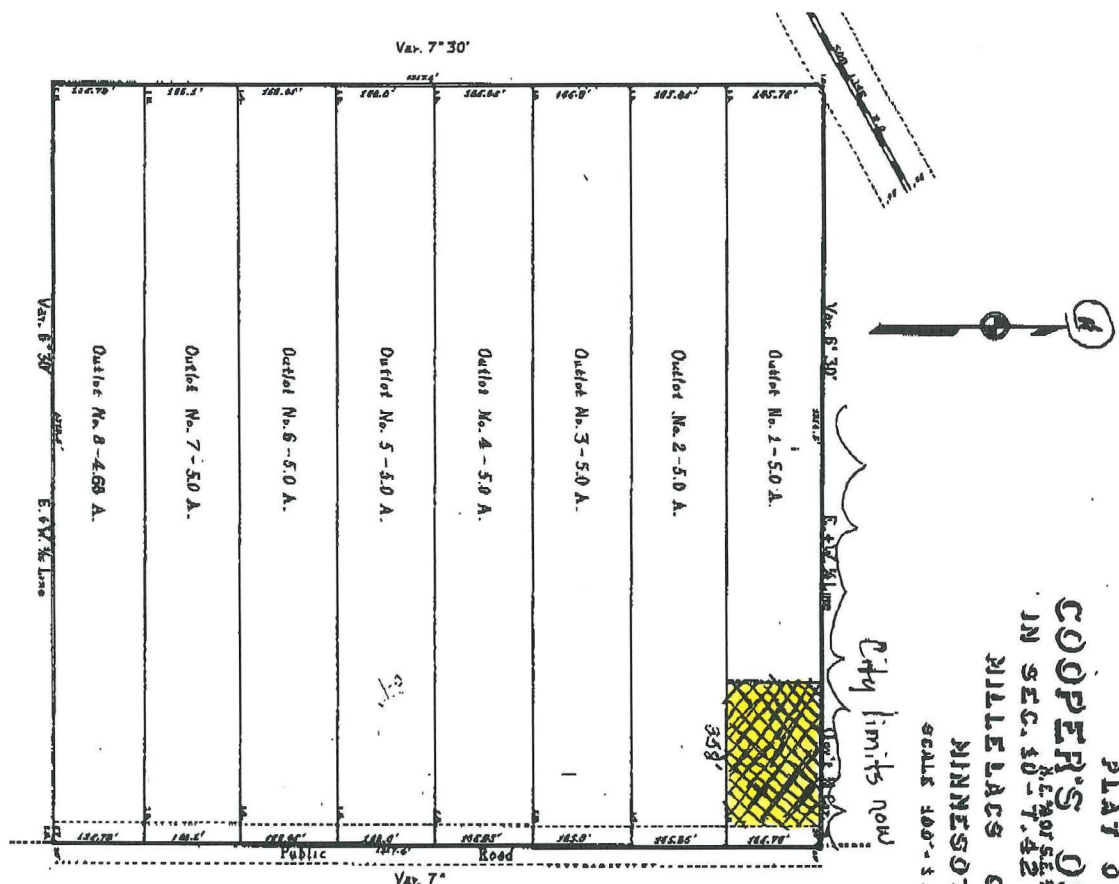
Office of County Treasurer
I hereby certify that all taxes for the year of 1933 levied against the land described on this plat as "Cooper's Outlots" have been paid. Dated this 7th day of August A.D. 1934.

J.G. Warren
County Treasurer

State of Minnesota) ss.
County of Mille Lacs)

Office of Register of Deeds
I hereby certify that this plat of "Cooper's Outlots" was filed for record in my office this 15th day of August A.D. 1934 and is indexed in 20 of said index.

Leslie Blanton
Register of Deeds



PLAY OF
COOPER'S BUTLERS
IN SEC. 10-T. 42 N. R. 25 W.
MILLELACS COUNTY
MINNESOTA
SCALES 100'-1 INCH

REC'D BY
M.M.B.
MAY 02 2007

[illegible]

Alfred Stuart
County Auditor

[illegible]

A. V. Michalev

Климентъ Трубецкой

~~As of 12/31/2023~~
~~Company Treasurer~~

Secretary
President of Dredge