

**TITLE XVII
CHAPTER 190**

**ORDINANCE NO. 125
CITY OF ISLE, MINNESOTA**

**AN ORDINANCE OF THE CITY OF ISLE, MINNESOTA ANNEXING LAND
LOCATED IN THE TOWNSHIP OF ISLE HARBOR, MILLE LACS COUNTY,
MINNESOTA PURSUANT TO MINNESOTA STATUTES 414.033,
SUBDIVISION 2 (3)**

WHEREAS, the territory described below is not presently located within the corporate limits of any incorporated city and abuts the corporate limits of the City of Isle, Minnesota; and

WHEREAS, the City of Isle has received a petition for annexation from all property owners of the territory described below; and

WHEREAS, the property to be annexed is less than 60 acres in size; and

WHEREAS, the parcels to be annexed are not currently served by public sewer facilities; and

WHEREAS, a public hearing has been held by the City Council, notice of which was sent by mail at least 30 days prior to the hearing to the town affected by the proposed ordinance and all to all landowners within and contiguous to the area to be annexed:

NOW, THEREFORE, THE CITY COUNCIL OF THE CITY OF ISLE, MILLE LACS COUNTY, MINNESOTA DOES HEREBY ORDAIN:

Section 1. Territory annexed. Pursuant to Minnesota Statutes 414.033, the corporate limits of the City of Isle are hereby extended by annexation of the unplatted property described as follows:

Section 12, Township 42N, Range 25W – NW of NW, Except E 475 FT of W 777 FT of N453 FT, and Except N538 FT Lying E of W777 FT.

Section 2. Filing. The City Clerk is directed to file certified copies of this ordinance with the Secretary of State, the County Auditor of Mille Lacs County, the Town Clerk of Isle Harbor Township and Minnesota Planning Municipal Boundary Adjustments.

Section 3. Effective date of annexation. This ordinance takes effect upon its passage, publication and the filing of certified copies as directed in Section 2, and its

approval by the Minnesota Municipal Board, now known as Minnesota Planning Municipal Boundary Adjustments.

Section 4. Official Map. The City Engineer is directed to change the Official Zoning Map to reflect the new border of the City resulting from annexation of the property and to depict its zoning classification as residential.

Section 5. Taxes. In the first year following the year when the municipality can first levy on the annexed area and thereafter, property taxes on the annexed land shall be paid to the municipality, but the municipality shall make a cash payment to the township for the period and in accordance with the following schedule:

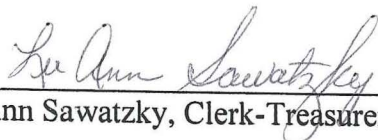
- a. In the first year following the year the municipality could first levy on the Annexed area, an amount equal to 90% of the property taxes distributed to the town in regard to the annexed area in the last year the property taxes from the annexed area were payable to the town;
- b. In the second year, an amount equal to 70%;
- c. In the third year, an amount equal to 50%;
- d. In the fourth year, an amount equal to 30%; and
- e. In the fifth year, an amount equal to 10%

Adopted by the City of Isle, Mille Lacs County, Minnesota this 10th day of October, 2006.



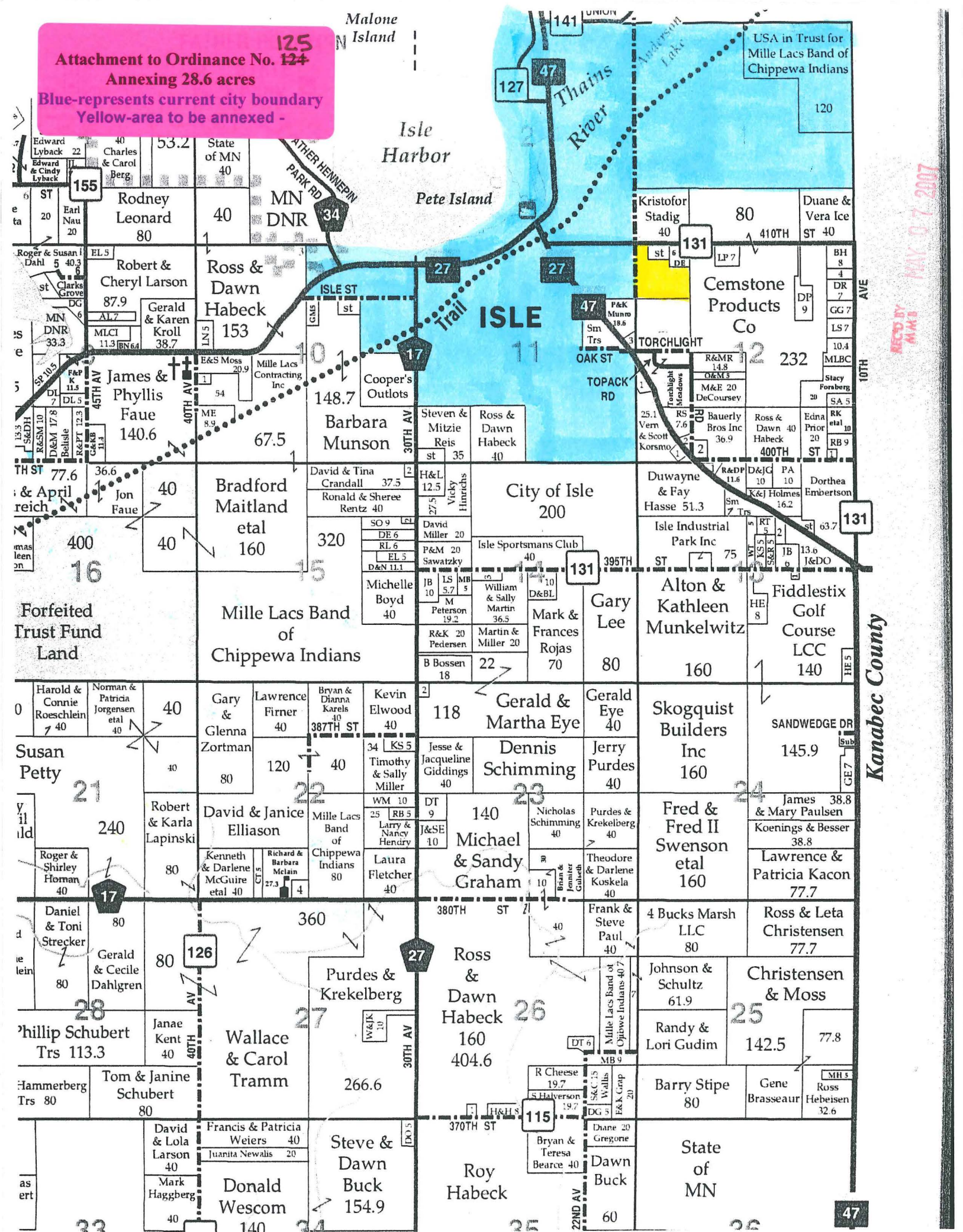
Michael DeCoursey, Mayor

ATTEST:



LuAnn Sawatzky, Clerk-Treasurer

Blue-represents current city boundary
Yellow-area to be annexed -



MAY 02 2007

