

**ORDINANCE NO. 565
2ND SERIES**

**AN ORDINANCE ANNEXING PROPERTY LOCATED
ALONG THE SOUTH SIDE OF MINNESOTA STATE HIGHWAY 27 WEST (GOLDEN
OAK) TO THE CORPORATE LIMITS OF THE CITY OF ALEXANDRIA**

WHEREAS, a majority (100%) of the property owners of the lands described below have petitioned the Alexandria City Council to annex this territory to the City of Alexandria, pursuant to Minnesota Statutes Section 414.033, Subdivision 5, and

WHEREAS, the property abuts upon the southwesterly boundaries of the Alexandria City Limits along the easterly and northerly boundaries of the subject property, and

WHEREAS, the property is not presently part of any incorporated city, and

WHEREAS, the property consists of unplatted land in LaGrand Township, Douglas County, containing approximately 148.5 acres in three (3) parcels owned by one (1) property owner, and

WHEREAS, the Alexandria City Council finds that the property is suburban in character by surrounding development and usage and is not currently served by municipal water services, and

WHEREAS, the City of Alexandria has received a Waiver of Objection to Annexation Petition from LaGrand Township,

NOW, THEREFORE THE CITY COUNCIL OF THE CITY OF ALEXANDRIA HEREBY ORDAINS:

SECTION I: That the Corporate Limits of the City of Alexandria are hereby extended to include land as described and the same is hereby annexed and included within the City.

SECTION II: That the territory to be annexed is described as:

All of the Northwest Quarter of the Northeast Quarter, and the Northeast Quarter of the Northwest Quarter,

and

That part of the Northwest Quarter of the Southeast Quarter and Southwest Quarter of the Northeast Quarter and Southeast Quarter of the Northwest Quarter and Southwest Quarter of the Northwest Quarter and Northwest Quarter of the Northwest Quarter lying north and east of the north and east right of way of Interstate Highway No. 94 and MnDOT Right of Way Plat No. 21-22. Section 35, Township 128 North, Range 38 West AC 148.5

SECTION III: That the lands hereby annexed are to be zoned as B-1, "General Business".

SECTION IV: That the City Clerk is directed to file copies of this ordinance with State of Minnesota, the Douglas County Auditor and the LaGrand Township Board of Supervisors.

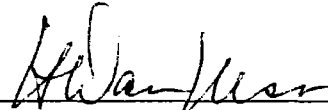
SECTION V: This Ordinance shall be in full force and effect from and after its passage, publication and approval by the State of Minnesota.

ADOPTED by the City Council of the City of Alexandria, Minnesota, this 8th day of August, 2005, by the following vote:

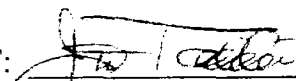
YES: KALPIN, CARLSON, WEISEL, BENSON, FRANK

NO: NONE

ABSENT: NONE



H. Dan Ness, Mayor

ATTEST: 

Jim Taddei, City Administrator

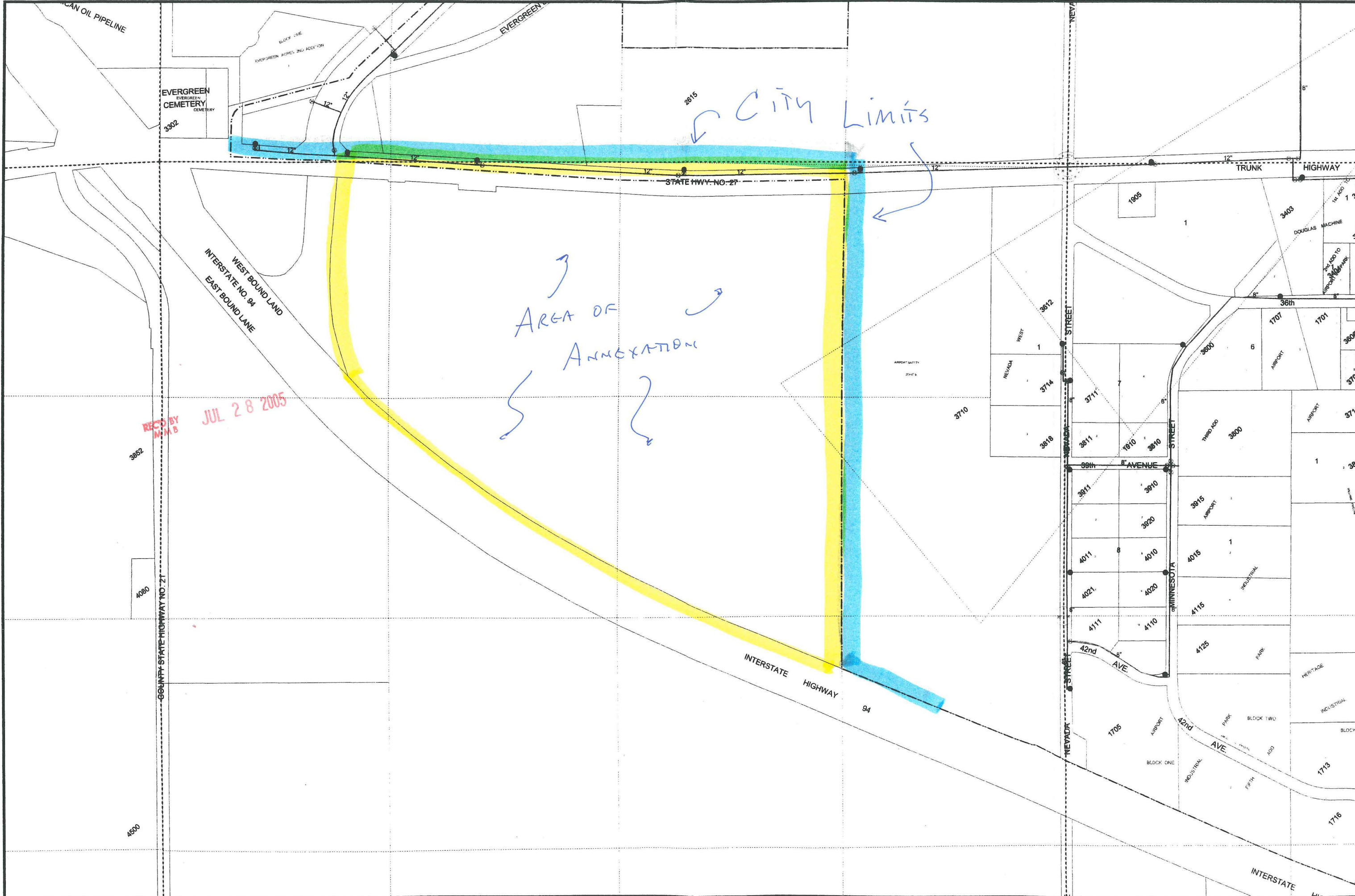


2005



13

Page No.



2815
City Limits

AREA OF ANNOTATION

REC'D BY M.A.B. JUL 28 2005

EVERGREEN CEMETERY

3302

WEST BOUND LANE
EAST BOUND LANE

COUNTY STATE HIGHWAY NO. 27

3852

4080

4500

STATE HWY. NO. 27

INTERSTATE HIGHWAY 94

94

TRUNK HIGHWAY

3612

WEST

NEVADA

3714

3710

3818

3811

1810

3810

3811

3820

4011

4010

4021

4020

4111

4110

42nd

AVE

1705

APPROX

42nd

AVE

BLOCK ONE

INDUSTRIAL

FIFTH

ADD

PARK

BLOCK TWO

INDUSTRIAL

ADD

INDUSTRIAL

BLOCK

INDUSTRIAL

HERITAGE

INDUSTRIAL

4125

PARK

4115

INDUSTRIAL

4015

1

3915

APPROX

3800

THIRD ADD

3800

APPROX

1707

APPROX

1701

APPROX

1

APPROX

1905

APPROX

3403

DOUGLAS MACHINE

14 ADD TO

APPROX

8"

12"

12"

12"

12"

12"

12"

12"

12"

12"

12"

12"

12"

12"

12"

12"

12"

12"

12"

12"

12"

12"

12"

12"

12"

12"

12"

12"

12"

12"

12"

12"

12"

12"

12"

12"

12"

12"

12"

12"

12"

12"

12"

12"

12"

12"

12"

12"

12"

12"

12"

12"

12"

12"

12"

12"

12"

12"

12"

12"

12"

12"

12"

12"

12"

12"

12"

12"

12"

12"

12"

12"

12"

12"

12"

12"

12"

12"

12"

12"

12"

12"

12"

12"

12"

12"

12"

12"

12"

12"

12"

12"

12"

12"

12"

12"

12"

12"

12"

12"

12"

12"

12"

12"

12"

12"

12"

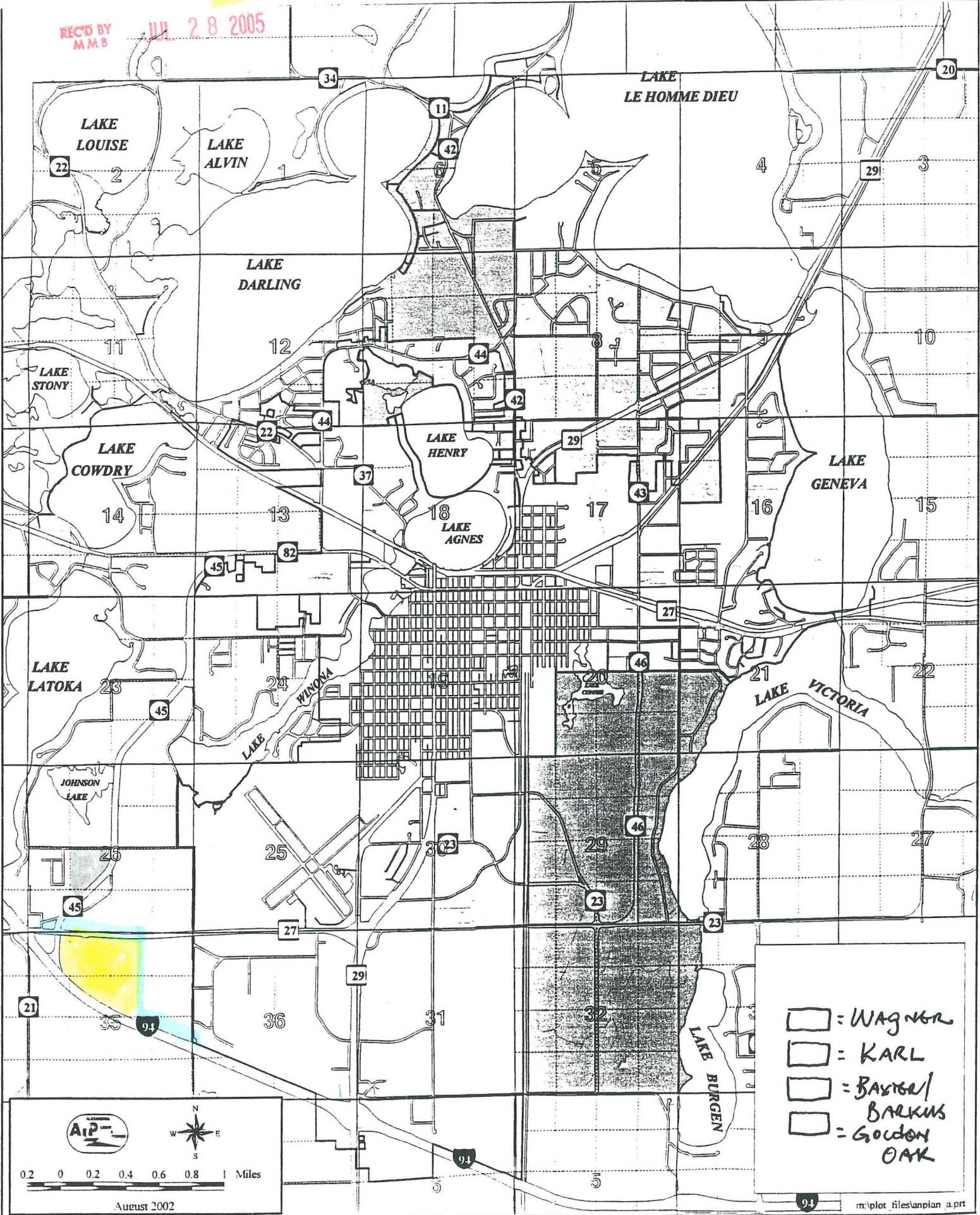
12"

12"



12"

= AREA OF ANNEXATION = CITY LIMITS

REC'D BY MMB JUL 28 2005



- = WAGNER
- = KARL
- = BARIGA/BARKUS
- = GOLDEN OAK

0.2 0 0.2 0.4 0.6 0.8 1 Miles

August 2002