

**CITY OF WINTHROP  
ORDINANCE NUMBER  
271**

5387 11-27-2005

**AN ORDINANCE OF THE CITY OF WINTHROP  
ANNEXING LAND LOCATED IN THE TOWN OF TRANSIT,  
SIBLEY COUNTY, MINNESOTA  
TO THE CITY OF WINTHROP, SIBLEY COUNTY,  
MINNESOTA PURSUANT TO  
MINN. STAT. § 414.033, SUBD. 2 (3), PERMITTING  
ANNEXATION BY ORDINANCE  
(LANCE WIBORG)**

**WHEREAS,** A CERTAIN PETITION DATED OCTOBER 29<sup>TH</sup>, 2004, HEREINAFTER DESCRIBED WAS DULY PRESENTED TO THE CITY COUNCIL ON THE FIRST (1<sup>ST</sup>) DAY OF NOVEMBER, 2004; AND

**WHEREAS,** THE PETITION WAS SIGNED BY ALL OWNERS SEEKING PUBLIC SEWER FACILITIES, WHICH ARE NOT NOW AVAILABLE; AND

**WHEREAS,** PURSUANT TO MINN. STAT. § 414.033, SUBD. 13, THE PETITIONER(S) WERE DULY NOTIFIED OF ANY CHANGES IN THEIR ELECTRIC UTILITY COSTS; AND

**WHEREAS,** ON DECEMBER 6<sup>TH</sup>, 2004 A HEARING WAS DULY HELD BY THE GOVERNING BODY OF THE CITY OF WINTHROP, MINNESOTA, ON THE PROPOSED ANNEXATION AFTER AT LEAST 30 DAYS' MAILED NOTICE BY CERTIFIED MAIL TO THE TOWN AND ALL LANDOWNERS WITHIN AND CONTIGUOUS TO THE AREA TO BE ANNEXED; AND

**WHEREAS,** THE LAND DESCRIBED IN THE PETITION ABUTS UPON THE CITY LIMITS AT THE WEST BOUNDARY THEREOF; THE AREA TO BE ANNEXED IS 60 ACRES OR LESS; THE AREA TO BE ANNEXED IS NOT PRESENTLY SERVED BY THE PUBLIC SEWER FACILITIES; THE PROPERTY IS UNINCORPORATED UNPLATTED LAND, .344 ACRES IN AREA, AND DOES NOT LIE IN A FLOOD PLAIN OR SHORE LAND AREA.

**NOW, THEREFORE, THE CITY COUNCIL ORDAINS:**

**SECTION I.** THE CITY COUNCIL HEREBY DETERMINES THAT THE TERRITORY DESCRIBED HEREIN ABUTS UPON THE CITY LIMITS AND IS (IS ABOUT TO BECOME) URBAN OR SUBURBAN IN CHARACTER DUE TO COMMERCIAL AND RESIDENTIAL EXPANSION .

**SECTION II.** THE POPULATION OF THE TERRITORY IS ZERO (0).

**CITY OF WINTHROP  
ORDINANCE NUMBER  
271**

REC'D BY  
MMB

JAN 27 2005

**SECTION III. TERRITORY ANNEXED.** THE CORPORATE LIMITS OF THE CITY ARE HEREBY EXTENDED TO INCLUDE THE PLATTED (UNPLATTED) LAND DESCRIBED IN ATTACHMENT "A", AND THE SAME IS HEREBY ANNEXED TO AND INCLUDED WITHIN THE CITY AS EFFECTUALLY AS IF IT HAD ORIGINALLY BY A PART THEREOF.

**SECTION IV. FILING.** THE CITY CLERK IS HEREBY DIRECTED TO FILE CERTIFIED COPIES OF THIS ORDINANCE WITH A) MINNESOTA PLANNING (OFFICE OF STRATEGIC AND LONG RANGE PLANNING)/MUNICIPAL BOUNDARIES ADJUSTMENT SECTION, B) THE SECRETARY OF STATE, C) THE TRANSIT TOWN CLERK, AND D) THE SIBLEY COUNTY AUDITOR.

**SECTION V. EFFECTIVE DATE.** THIS ORDINANCE TAKES EFFECT UPON ITS PASSAGE AND PUBLICATION AND THE FILING OF THE CERTIFIED COPIES AS DIRECTED IN SECTION 3, AND APPROVAL OF THE ORDINANCE BY THE MINNESOTA PLANNING.

**SECTION VI. TAXATION.** (1) IF THE ANNEXATION BECOMES EFFECTIVE ON OR BEFORE AUGUST 1<sup>ST</sup> OF A LEVY YEAR, THE CITY OF WINTHROP MAY LEVY ON THE ANNEXED AREA BEGINNING (WITH THIS SAME LEVY YEAR); OR (2) IF THE ANNEXATION BECOMES EFFECTIVE AFTER AUGUST 1<sup>ST</sup> OF A LEVY YEAR, TRANSIT TOWNSHIP MAY LEVY CONTINUE TO LEVY ON THE ANNEXED AREA FOR THIS LEVY YEAR. IN THE FIRST YEAR FOLLOWING THE YEAR IN WHICH THE CITY OF WINTHROP CAN FIRST LEVY ON THE ANNEXED AREA, AND THEREAFTER, PROPERTY TAXES SHALL BE PAID TO THE CITY, WHICH SHALL THEN MAKE CASH PAYMENTS TO TRANSIT TOWNSHIP FOR THE PERIOD AND IN ACCORDANCE WITH THE FOLLOWING SCHEDULE:

- I. IN THE FIRST YEAR FOLLOWING THE YEAR THE CITY OF WINTHROP CAN FIRST LEVY ON THE ANNEXED AREA, AN AMOUNT EQUAL TO 90% OF THE PROPERTY TAXES DISTRIBUTED TO TRANSIT TOWNSHIP IN REGARD TO THE ANNEXED AREA IN THE LAST YEAR THE PROPERTY TAXES FROM ANNEXED AREA WERE PAYABLE TO CORNISH TOWNSHIP;
- II. IN THE SECOND YEAR, AN AMOUNT EQUAL TO 70%;
- III. IN THE THIRD YEAR, AN AMOUNT EQUAL TO 50%;
- IV. IN THE FOURTH YEAR, AN AMOUNT EQUAL TO 30%; AND
- V. IN THE FIFTH YEAR, AN AMOUNT EQUAL TO 10%

**CITY OF WINTHROP  
ORDINANCE NUMBER  
271**

RECEIVED  
JAN 27 2005

JAN 27 2005

**ADOPTED** BY THE CITY COUNCIL OF THE CITY OF WINTHROP,  
MINNESOTA, THIS EIGHTEENTH (18<sup>TH</sup>) DAY OF JANUARY 2005.

**AYES:** MACHAIEK, ROIGER, TREBELHORN

**NAYS:** NONE

**PRESENT-NOT VOTING:** NONE

**ABSENT:** O'CONNOR, MUTH

  
MAYOR

ATTEST:

  
CITY CLERK

FIRST READING: NOVEMBER 15<sup>TH</sup>, 2004

SECOND READING/ADOPTION: JANUARY 18<sup>TH</sup>, 2005

PUBLICATION: FEBRUARY 2<sup>ND</sup>, 2005

**CITY OF WINTHROP  
ORDINANCE NUMBER  
271**

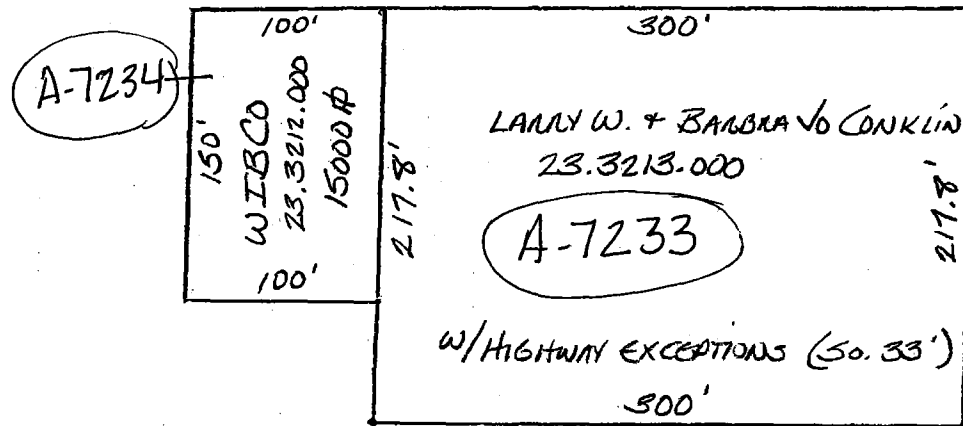
REC'D BY  
MMB

JAN 27 2005

**EXHIBIT "A"**

A PARCEL OF THE SOUTHWEST QUARTER OF THE SOUTHWEST QUARTER OF SECTION 32 IN TOWNSHIP 113 NORTH, OF RANGE 29 WEST, DESCRIBED AS FOLLOWS, TO-WIT:

BEGINNING AT A POINT 605 FEET EAST AND 267.8 FEET NORTH OF THE SOUTHWEST CORNER OF SAID SECTION 32, SAID POINT OF BEGINNING LYING 217.8 FEET NORTH OF THE NORTHERLY RIGHT-OF-WAY LIMITS OF TRUNK HIGHWAY NO. 19 AS IT IS NOW LOCATED; THENCE RUNNING WEST PARALLEL TO TRUNK HIGHWAY NO. 19 FOR A DISTANCE OF 100 FEET AND THENCE SOUTH A DISTANCE OF 150 FEET AND THENCE EAST PARALLEL TO TRUNK HIGHWAY NO. 19 FOR A DISTANCE OF 100 FEET. AND THENCE NORTH 150 FEET TO AND TERMINATING AT THE GIVEN POINT OF BEGINNING.



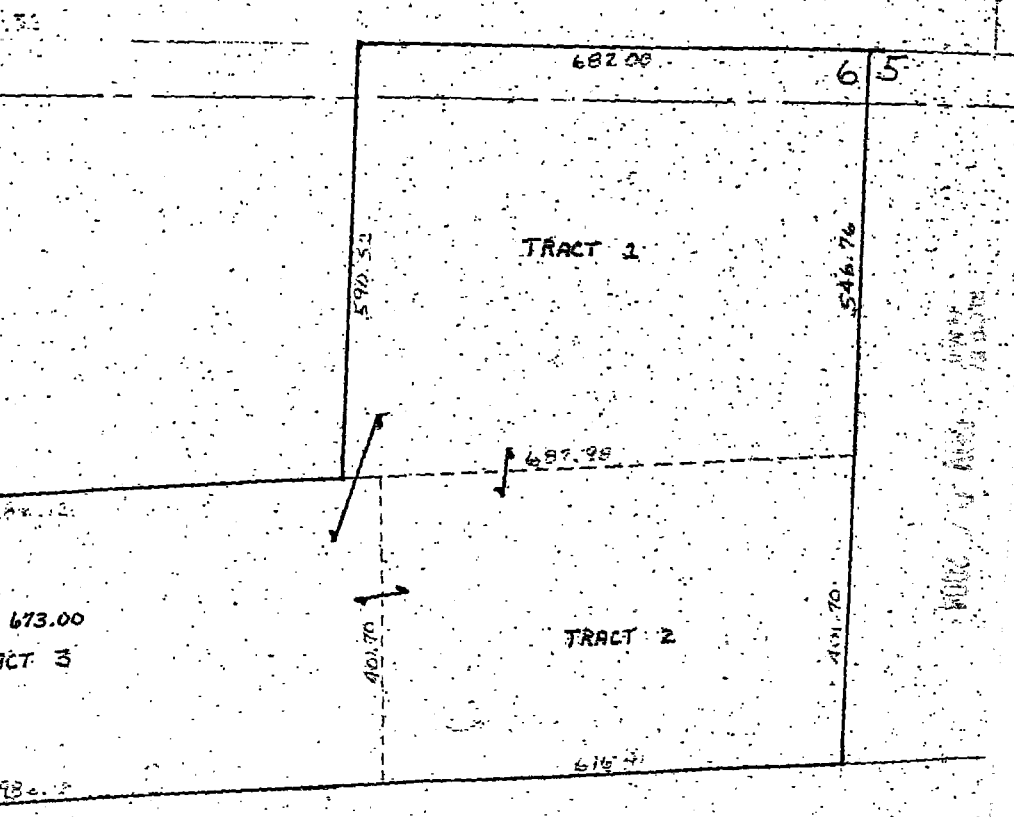
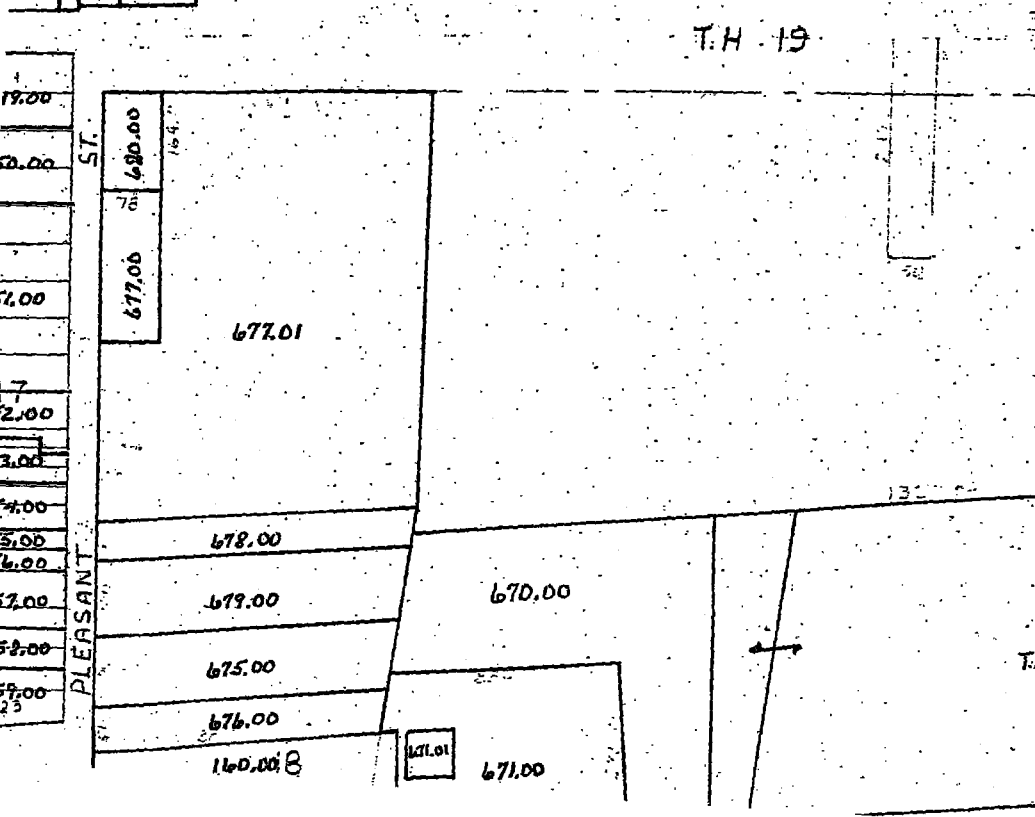
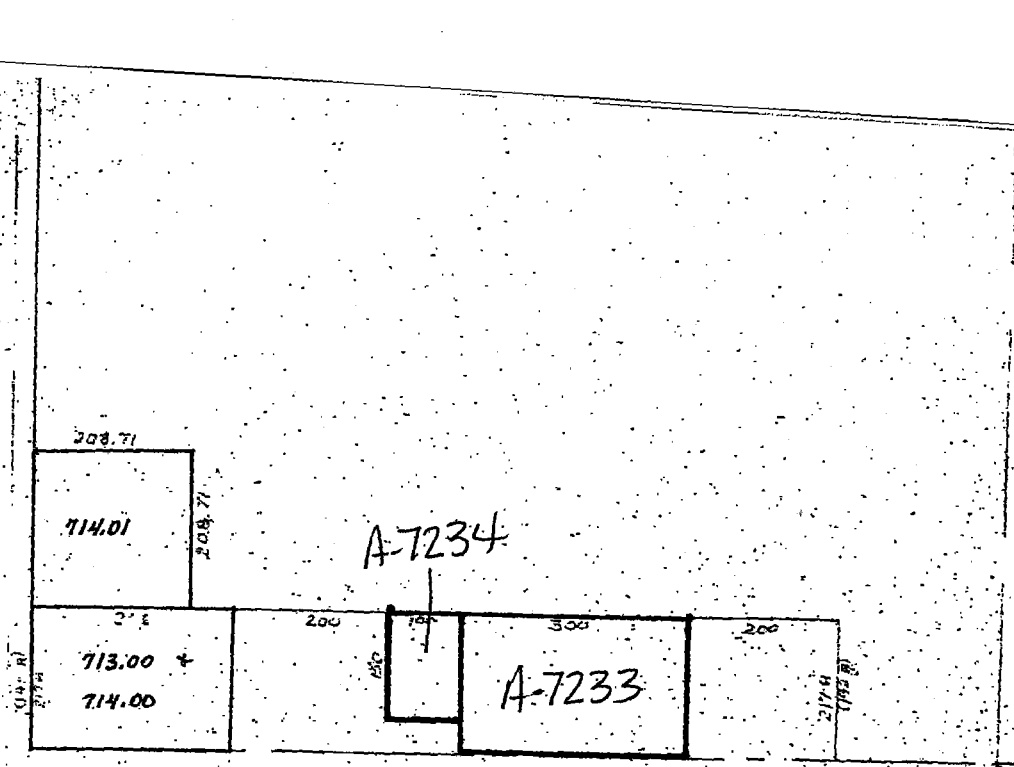
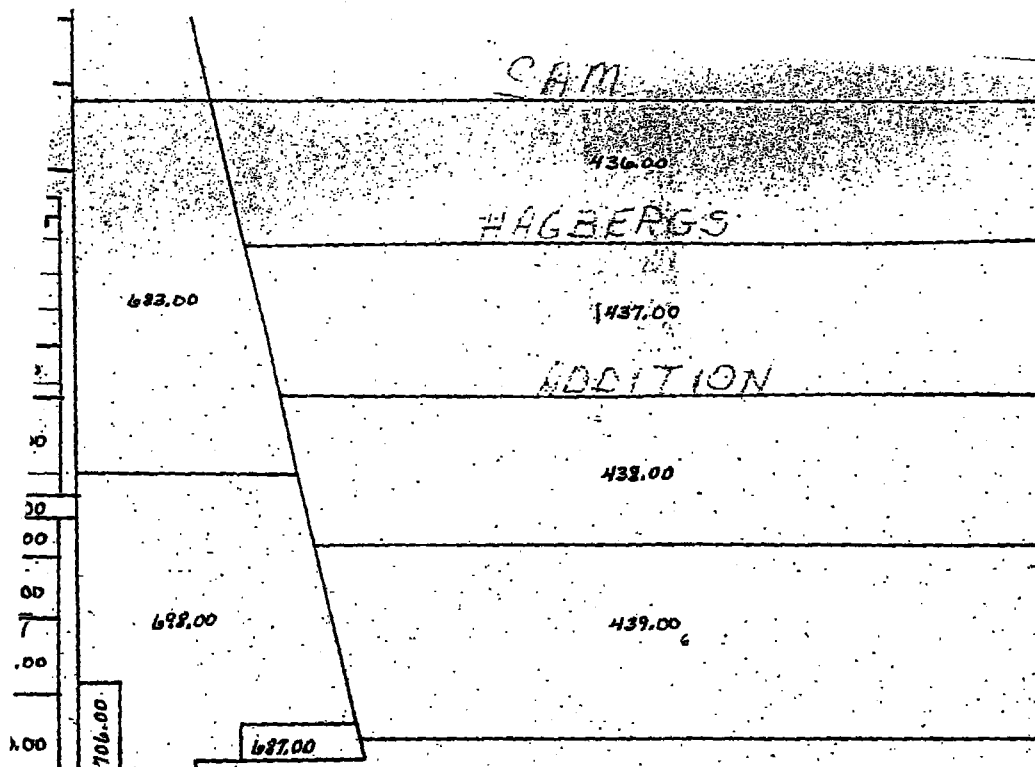
50'

• CENTERLINE TRUNK HIGHWAY 19

605'

•  
SW CORNER  
32 113 29

RECEIVED  
JAN 11 1984  
COUNTY CLERK  
JAN 11 1984



POP. 1292

CONKLYN/WIBORG ANNEXATION

W. 10th ST. E. 10th ST. Trailer Court Private

W. 9th ST. E. 9th ST.

W. 8th ST. E. 8th ST.

W. 7th ST. E. 7th ST.

W. 6th ST. E. 6th ST.

W. 5th ST. E. 5th ST.

W. 4th ST. E. 4th ST.

W. 3rd ST. E. 3rd ST.

W. 2nd ST. E. 2nd ST.

W. 1st ST. E. 1st ST.

N. 1st ST. N. 2nd ST. N. 3rd ST. N. 4th ST. N. 5th ST. N. 6th ST. N. 7th ST. N. 8th ST. N. 9th ST. N. 10th ST.

E. 1st ST. E. 2nd ST. E. 3rd ST. E. 4th ST. E. 5th ST. E. 6th ST. E. 7th ST. E. 8th ST. E. 9th ST. E. 10th ST. E. 11th ST.

Highway 19

Highway 15

Highway 10

Highway 12

Highway 14

Highway 16

Highway 18

Highway 20

Highway 22

Highway 24

Highway 26

Highway 28

Highway 30

Highway 32

Highway 34

Highway 36

Highway 38

Highway 40

Highway 42

Highway 44

Highway 46

Highway 48

Highway 50

Highway 52

Highway 54

Highway 56

Highway 58

Highway 60

Highway 62

Highway 64

Highway 66

Highway 68

Highway 70

Highway 72

Highway 74

Highway 76

Highway 78

Highway 80

Highway 82

Highway 84

Highway 86

Highway 88

Highway 90

Highway 92

Highway 94

Highway 96

Highway 98

Highway 100

Highway 102

Highway 104

Highway 106

Highway 108

Highway 110

Highway 112

Highway 114

Highway 116

Highway 118

Highway 120

Highway 122

Highway 124

Highway 126

Highway 128

Highway 130

Highway 132

Highway 134

Highway 136

Highway 138

Highway 140

Highway 142

Highway 144

Highway 146

Highway 148

Highway 150

Highway 152

Highway 154

Highway 156

Highway 158

Highway 160

Highway 162

Highway 164

Highway 166

Highway 168

Highway 170

Highway 172

Highway 174

Highway 176

Highway 178

Highway 180

Highway 182

Highway 184

Highway 186

Highway 188

Highway 190

Highway 192

Highway 194

Highway 196

Highway 198

Highway 200

Highway 202

Highway 204

Highway 206

Highway 208

Highway 210

Highway 212

Highway 214

Highway 216

Highway 218

Highway 220

Highway 222

Highway 224

Highway 226

Highway 228

Highway 230

Highway 232

Highway 234

Highway 236

Highway 238

Highway 240

Highway 242

Highway 244

Highway 246

Highway 248

Highway 250

Highway 252

Highway 254

Highway 256

Highway 258

Highway 260

Highway 262

Highway 264

Highway 266

Highway 268

Highway 270

Highway 272

Highway 274

Highway 276

Highway 278

Highway 280

Highway 282

Highway 284

Highway 286

Highway 288

Highway 290

Highway 292

Highway 294

Highway 296

Highway 298

Highway 300

Highway 302

Highway 304

Highway 306

Highway 308

Highway 310

Highway 312

Highway 314

Highway 316

Highway 318

Highway 320

Highway 322

Highway 324

Highway 326

Highway 328

Highway 330

Highway 332

Highway 334

Highway 336

Highway 338

Highway 340

Highway 342

Highway 344

Highway 346

Highway 348

Highway 350

Highway 352

Highway 354

Highway 356

Highway 358

Highway 360

Highway 362

Highway 364

Highway 366

Highway 368

Highway 370

Highway 372

Highway 374

Highway 376

Highway 378

Highway 380

Highway 382

Highway 384

Highway 386

Highway 388

Highway 390

Highway 392

Highway 394

Highway 396

Highway 398

Highway 400

Highway 402

Highway 404

Highway 406

Highway 408

Highway 410

Highway 412

Highway 414

Highway 416

Highway 418

Highway 420

Highway 422

Highway 424

Highway 426

Highway 428

Highway 430

Highway 432

Highway 434

Highway 436

Highway 438

Highway 440

Highway 442

Highway 444

Highway 446

Highway 448

Highway 450

Highway 452

Highway 454

Highway 456

Highway 458

Highway 460

Highway 462

Highway 464

Highway 466

Highway 468

Highway 470

Highway 472

Highway 474

Highway 476

Highway 478

Highway 480

Highway 482

Highway 484

Highway 486

Highway 488

Highway 490

Highway 492

Highway 494

Highway 496

Highway 498

Highway 500

Highway 502

Highway 504

Highway 506

Highway 508

Highway 510

Highway 512

Highway 514

Highway 516

Highway 518

Highway 520

Highway 522

Highway 524

Highway 526

Highway 528

Highway 530

Highway 532

Highway 534

Highway 536

Highway 538

Highway 540

Highway 542

Highway 544

Highway 546

Highway 548

Highway 550

Highway 552

Highway 554

Highway 556

Highway 558

Highway 560

Highway 562

Highway 564

Highway 566

Highway 568

Highway 570

Highway 572

Highway 574

Highway 576

Highway 578

Highway 580

# CONKUN/WIBORG ANNEXATION