

ORDINANCE NO. 78 Second Series

AN ORDINANCE ANNEXING Lot 2 of Lot F of NW $\frac{1}{4}$ and Lot E of NW $\frac{1}{4}$, Section 31, Twp. 110N, Range 32W, Brown County, Minnesota.

WHEREAS, the City Council, pursuant to MSA Section 414.033 Subd 5, has received a Petition for Annexation from Del Monte Corporation; and

WHEREAS, Petitioners are the sole owners of Lot 2 of Lot F of the NW $\frac{1}{4}$ and Lot E of the NW $\frac{1}{4}$, all in Section 31, Twp. 110N, Range 32W, which contains approximately 20.65 acres; and

WHEREAS, the property is urban or suburban in character and abuts upon the city limits of the City of Sleepy Eye; and

WHEREAS, the parcels are not presently included within the corporate limits of any incorporated city and the area is not presently served by a municipal water supply system.

NOW, THEREFORE, the City of Sleepy Eye does ordain as follows:

SECTION ONE. The City Council hereby determines that the annexation will be to the best interest of the City and of the territory affected, that the territory described herein abuts upon the city limits and is urban or suburban in character, and that none of said territory is now included within the limits of any city and does not abut upon the limits of any other city.

SECTION TWO. The corporate limits of the City are hereby extended to include the platted land described as follows, and the same is hereby annexed to and included within the City as effectually as if it had originally been a part hereof:

Lot 2 of Lot F of the NW $\frac{1}{4}$ and Lot E of the NW $\frac{1}{4}$, Section 31, Twp. 110N, Range 32W, Brown County, Minnesota.

SECTION THREE. The City Clerk has been directed to file certified copies of this Ordinance with the Director of Minnesota Municipal Boundary Adjustments, Secretary of State, the Home Township Clerk and the Brown County Board of Commissioners

SECTION FOUR. This Ordinance takes effect upon its passage and publication and the filing of the certified copies as directed in Section Three and approval of Minnesota Municipal Boundary Adjustments.

Passed by the City Council for the City of Sleepy Eye, Minnesota, on February 8, 2005.


James J. Broich, Mayor

I hereby certify and attest that the City Council of the City of Sleepy Eye, Minnesota, did pass the above Ordinance on February 8, 2005, in accordance with the Charter Provisions and state laws provided therefor.

Dated: February 8, 2005.


Judith K. Ristau, City Clerk

Published in the Sleepy Eye HERALD DISPATCH,
Sleepy Eye, Minnesota, on February 17th, 2005.

THIS INSTRUMENT WAS DRAFTED BY:
HAUSER AND SCHMID, PLLP
Errol E. Hauser
109 Main West
Sleepy Eye, MN 56085
Phone: (507) 794-3671

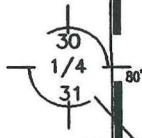
City of Sleepy Eye, MN
Jan. 2005

REC'D BY
MMB
JAN 18 2005

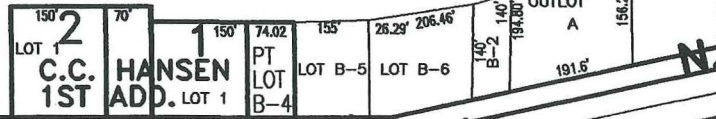
AVE. N.W.
36.88 AC

EIGHTH

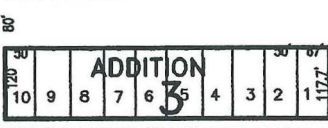
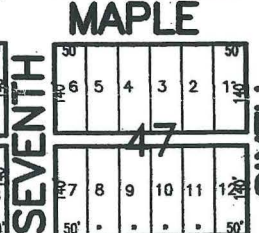
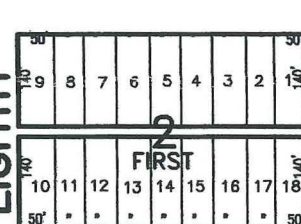
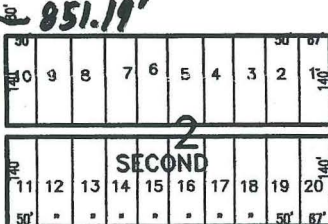
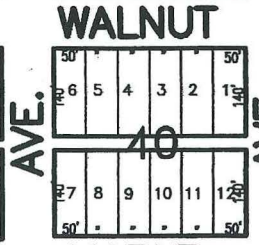
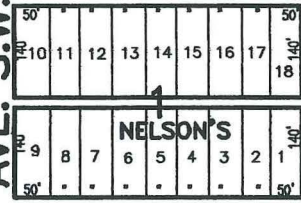
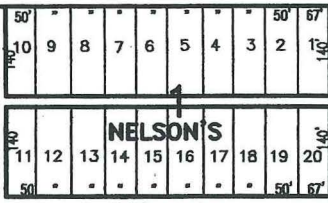
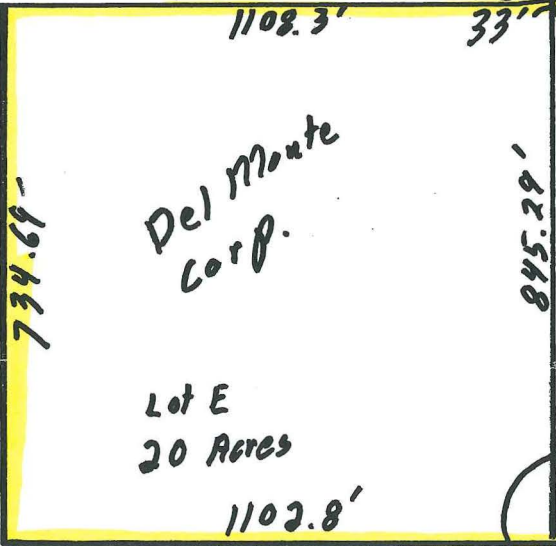
9th Ave



PRESGOTT ST.



U.S. HWY. No. 14



LOT A OF LOT 2

Current City Corporate Limits

EAGLES PARK

SLEEPY EYE

LOT 2

ADDITION
185.2
600.25
140.2
139.10
216.50
472.5
156.2
191.6

33
12 11 10 9 8 7 6 5 4 3 2 1
25 24 23 22 21 20 19 18 17 16 15 14 13

40
6 5 4 3 2 1
18 17 16 15 14 13 12 11 10 9 8 7

47
7 8 9 10 11 12
18 17 16 15 14 13 12 11 10 9 8 7

54
6 5 4 3 2
13 12 11 10 9 8 7 6 5 4 3 2 1

PLAT

MICROFILMED

REC'D BY
MMB

JAN 18 2005

W. 1/2 OF SEC. 31 T110N OF R 32W

April 12, 1947

9th
December 7 11:30
P.
On File

Ray L. Christensen

G. N. Robertson C.E.

7.64 Ac.

BD Rod Line
203.91'

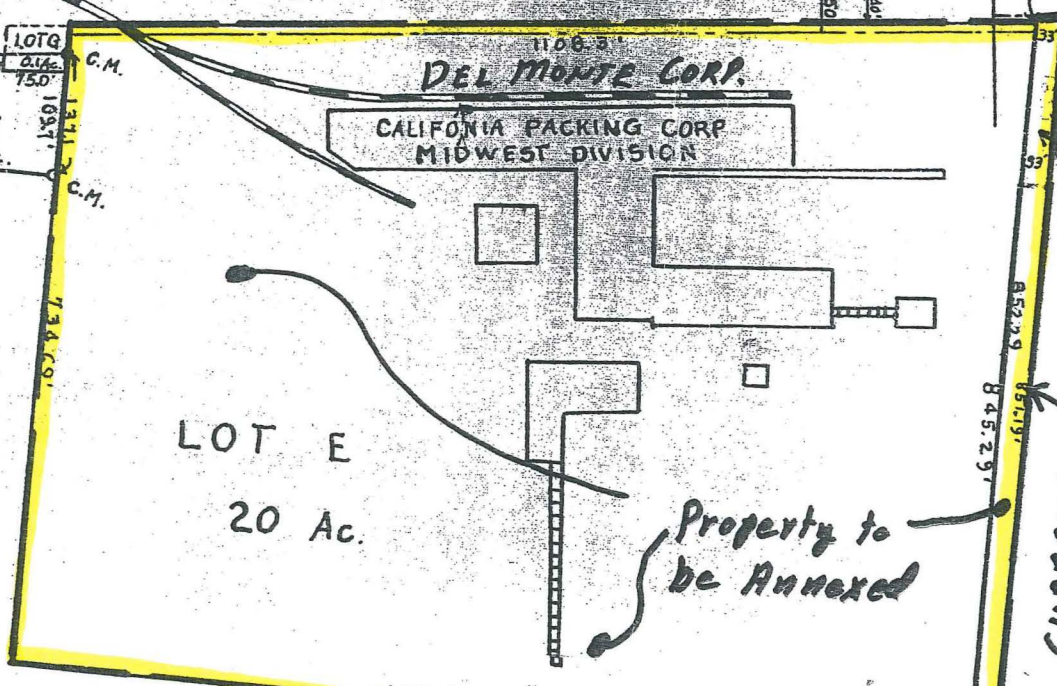
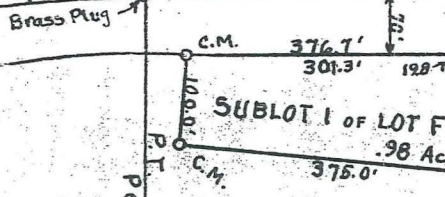
LOT C 1.78 Ac.

LOT B
LOT A

C. & N.W. RR STOCK YARDS



T.C. + W7
RTN WESTERN RAILWAY



LOT 2 OF LOT F
.65 Ac.
CURRENT
CITY

Property to
be Annexed

