

ANNEXATION PETITION

In the matter of the Petition for Annexation of Certain Unincorporated Land to the City of Sleepy Eye, Minnesota:

The undersigned, Del Monte Corporation, a Delaware corporation with a principal business address of One Market @ the Landmark, San Francisco, California 94105 and a processing facility located at Hwy 14 West City Limits, Sleepy Eye, Minnesota 56085, herewith petitions for the annexation of the following described parcels of land located in Home Township, adjacent to the City of Sleepy Eye, legally described as follows:

Parcel ID: R150.031.002.04.110

Legal Desc: SECT-31 TWP-110N Range-32W 20.65 ACRES

LOT 2 OF LOT F OF NW1/4 and LOT E OF NW1/4 of Section 31, Twp 110N Range 32W.

In connection with this Annexation Petition, the undersigned respectfully states:

1. The parcels to be annexed abut the city limits of the City of Sleepy Eye, Minnesota.
2. The parcels to be annexed are owned entirely by Del Monte Corporation.
3. The parcels are not presently included within the corporate limits of any incorporated city and the area is not presently served by a municipal water supply system.
4. This processing is commenced under MSA Section 414.033, Subd. 5.
5. All of the parcels in question are urban or suburban in character.

Dated: 1-05-05

DEL MONTE CORPORATION

By: M.A. Berg

Name: Marvin A. Berg

Title: Sr. V.P. Eastern Operations

City of Sleepy Eye, MN
Jan. 2005

REC'D BY
MMB

JAN 18 2005

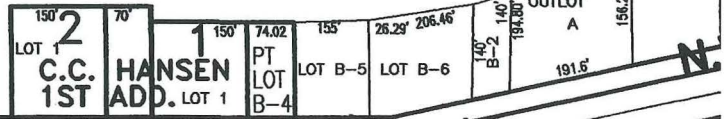
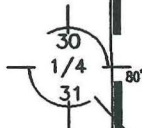
ADDITION
185.2

AVE. N.W.

36.88 AC

EIGHTH

9th Ave



PRESGOTT ST.

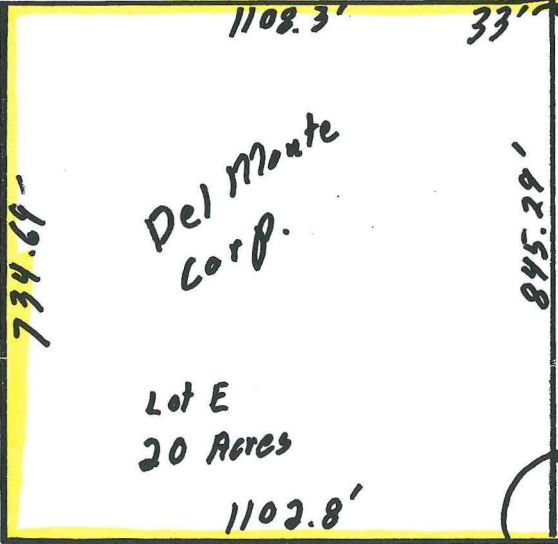
U.S. HWY. No. 14

CRUMLETT'S
ADD.

BROWNS
ADDITION

S.W. AVE.

WALNUT



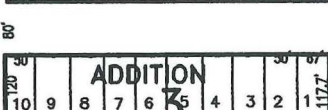
Del Monte
Corp.

Lot E
20 Acres

1102.8'

Lot 2 of
Lot F
0.65 Acres

851.19'



EIGHTH

AVE. S.W.

SEVENTH

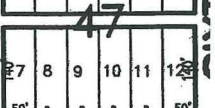
SEVENTH



WALNUT

MAPLE

WATER



Current
City
Corporate
Limits

EAGLES
PARK

LOT 6

SLEEPY EYE

LOT 2

PLAT

MICROFILMED

REC'D BY
MMB

JAN 18 2005

W. 1/2 OF SEC. 31 T11ON OF R 32W

April 12, 1947

9th
December 7 11:50
P.
On File

Ray L. Christensen

G. N. Robertson C.E.

7.64 Ac.

T.C. + W₇

Railroad RAILWAY

2595.7

423.2'

40' 66'

LOT C 1.78 Ac.

LOT A
LOT B
LOT D

C. & N.W. RR STOCK YARDS

30
31

1075

1080

1085

1090

Brass Plug

C.M. 376.7'
301.3'

LOT G
214.6'
75.0'

SUBLOT I of LOT F
.98 Ac.

C.M. 375.0'

P.T. 1076 + 38.8
P.O.T. 1087 + 79.2

DEL MONTE CORP.

CALIFORNIA PACKING CORP
MIDWEST DIVISION

LOT E
20 Ac.

Property to
be Annexed

LOT 2 OF LOT
.65 Ac.

CURRENT
LITIG
CORPORATE
MATTERS

