

CITY OF CASS LAKE

REC'D BY  
MMB

DEC 08 2004

ORDINANCE NO. 05262004

AN ORDINANCE ANNEXING CERTAIN PROPERTY  
INTO THE CITY OF CASS LAKE CITY LIMITS

WHEREAS, certain property, described below, is not presently included in the corporate limits of any incorporated city, village or borough; and

WHEREAS, the property is abutting the city limits of the City of Cass Lake; and

WHEREAS, the city has received a petition for annexation from all the property owners of the land; and

WHEREAS, the area to be annexed is less than 60 acres and is not presently served by public sewer facilities; and

WHEREAS, the legal description of the property is as follows, to-wit:

**That part of the Northeast Quarter of the Southeast Quarter (NE1/4 SE1/4) lying west of Highway 371, and the East 396 feet of the North 575 feet of the Northwest Quarter of the Southeast Quarter (NW1/4 SE1/4) lying west of Highway 371, all in Section Sixteen (16), Township One Hundred Forty-five (145) North, Range Thirty-one (31) West, Cass County, Minnesota.**

NOW, THEREFORE, the council of the City of Cass Lake hereby ordains that the corporate limits of the City of Cass Lake are hereby extended to include the land described above, and the same is hereby annexed and included within the City of Cass Lake as effectively as if it had originally been a part thereof.

This ordinance shall become effective thirty (30) days after its passage, due publication thereof, and approval by the Minnesota Planning Agency.

Ayes: 5

Nays:       

Absent: Ø

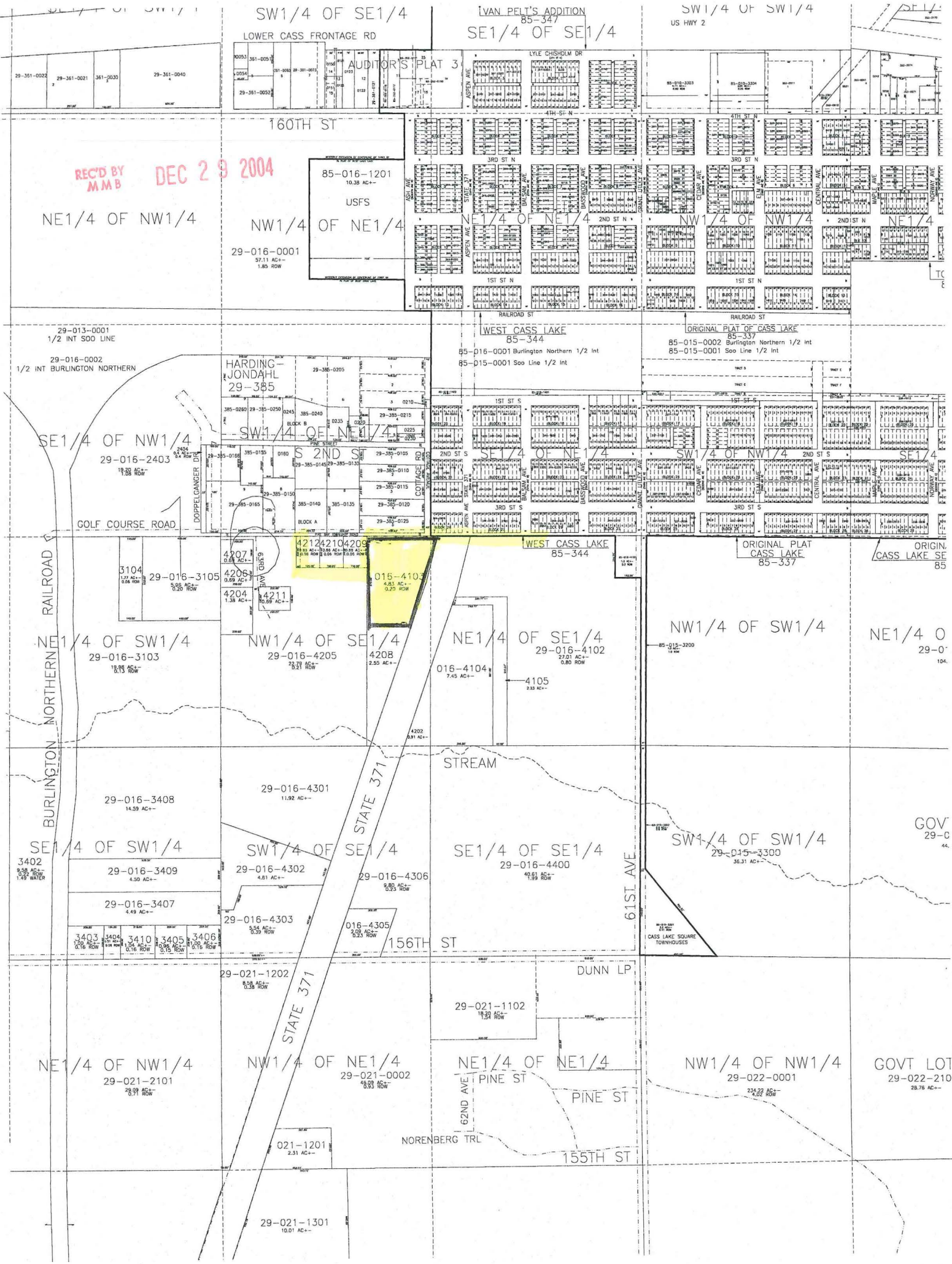
Dated: 5/26/04

REC'D BY  
MMB

DEC 08 2004

Attest: Renee Eckerly  
Renee Eckerly, City Clerk

Approved: Elaine Fleming  
Elaine Fleming, Mayor



REC'D BY  
MMB  
DEC 29 2004

NE1/4 OF NW1/4

NW1/4 OF NE1/4

SE1/4 OF SE1/4

NW1/4 OF NW1/4

NE1/4

SE1/4 OF NW1/4

SW1/4 OF NE1/4

SE1/4 OF NE1/4

SW1/4 OF NW1/4

SE1/4

NE1/4 OF SW1/4

NW1/4 OF SE1/4

NE1/4 OF SE1/4

NW1/4 OF SW1/4

NE1/4 OF

SE1/4 OF SW1/4

SW1/4 OF SE1/4

SE1/4 OF SE1/4

SW1/4 OF SW1/4

GOV

NE1/4 OF NW1/4

NW1/4 OF NE1/4

NE1/4 OF NE1/4

NW1/4 OF NW1/4

GOVT LOT