

## ORDINANCE SECTION 908.02

## SUPPLEMENTAL ANNEXATION

The City Council the City of Red Lake Falls, does ordain as follows:

Section 1: A petition has been filed with the City of Red Lake Falls, Minnesota, by the sole owners of the following described real estate:

All that part of the East Seven Hundred Twenty (720) feet of the Southeast Quarter of the Northwest Quarter (SE $\frac{1}{4}$ NW $\frac{1}{4}$ ) in Section Twenty-three (23) in Township One Hundred Fifty-one (151) North of Range Forty-four (44) West of the Fifth Principal Meridian, which lies South by Southeast of the South right-of-way line on State Highway No. 32 as said highway is a newly re-located across said Government Subdivision estimated to contain 19 acres.

All that part of the East Seven Hundred Twenty (720) feet of Government Lot Four (4) in Section Twenty-three (23) in Township One Hundred Fifty-one (151) North of Range Forty-four (44) West of the Fifth Principal Meridian, which lies South by Southeast of the South Right-of-way line of State Highway No. 32, as said Highway is newly re-located across said Government Subdivisions.

All of Blocks Seventy-nine (79), Eighty (80), Ninety-three (93), Ninety-four (94), Ninety-nine (99) and One Hundred (100) in Kretschmar's Addition to Red Lake Falls, Minnesota.

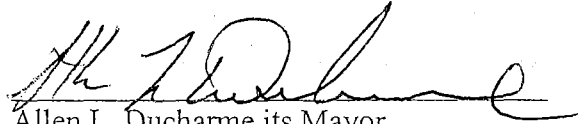
The Northeast Quarter of the Southwest Quarter (NE $\frac{1}{4}$ SW $\frac{1}{4}$ ) of Section Twenty-three (23), Township One Hundred Fifty-one (151), Range Forty-four (44) West of the Fifth Principal Meridian also described as Miles Addition to the City of Red Lake Falls, Minnesota.

Section 2: That said real estate abuts the City of Red Lake Falls and is urban in character and consists of 77.5 acres.

Section 3: The City of Red Lake Falls, Minnesota, hereby ordains and declares that the real estate described in Section 1 above be and the same hereby is annexed to, and included in the City of Red Lake Falls, Minnesota, as effectively as if it had been originally a part thereof.

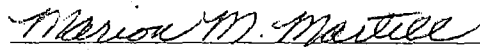
Section 4: This ordinance shall be final and shall be effect upon its publication and its filing with the State of Minnesota Department of Administration, the Township of Red Lake Falls, the Red Lake County Auditor, and the State of Minnesota Secretary of State and it is approved by the Director of the State of Minnesota Department of Administration.

Adopted by the City Council of the City of Red Lake Falls this 24th day of January, 2005.

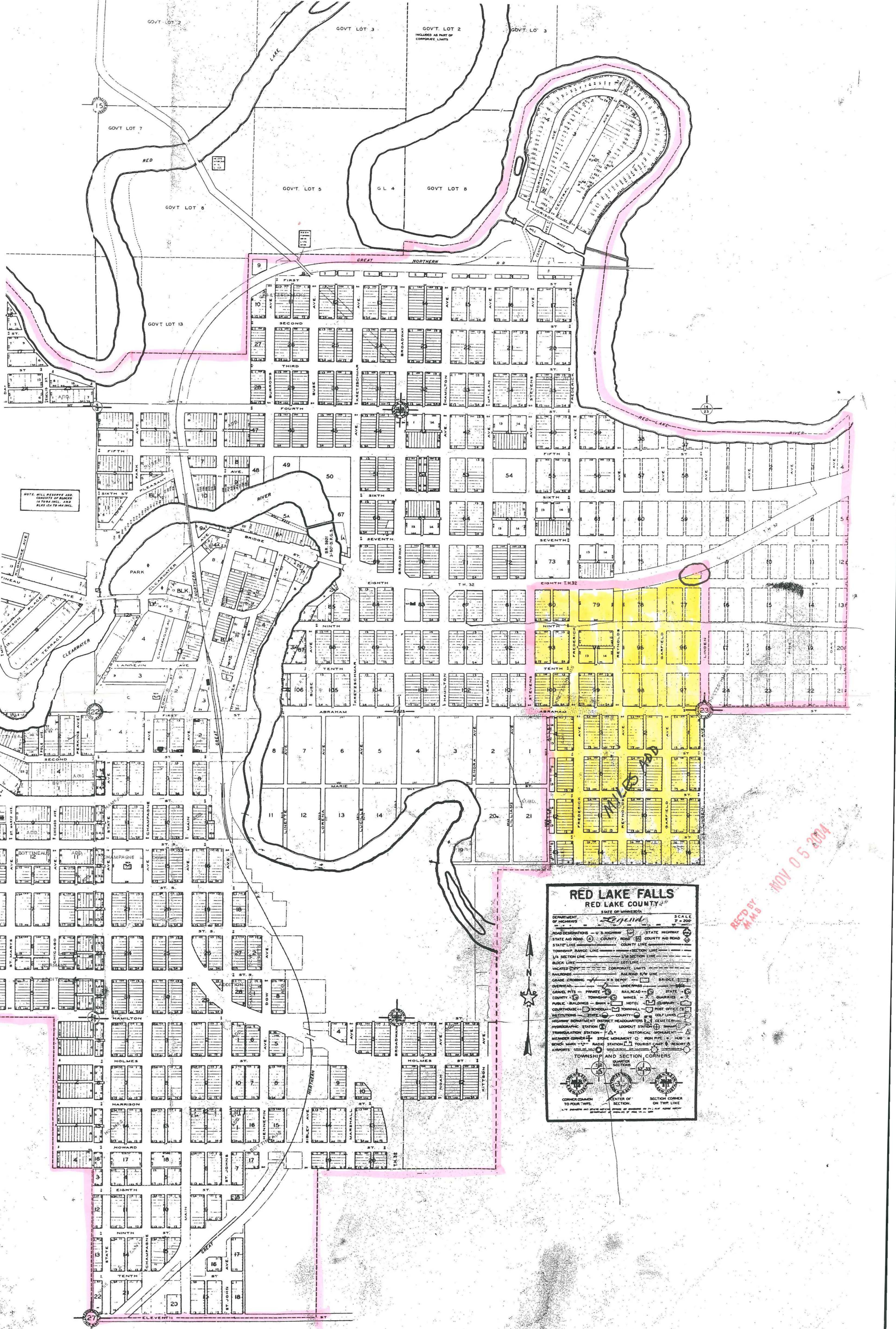
  
Allen L. Ducharme its Mayor

(SEAL)

Attest:

  
Marion M. Martell its City Administrator





NOTE: WILL RESERVE AND CONVEY TO BLACKS  
 INTERESTS IN THE  
 BLOCKS 106 TO 114 INCL.

**RED LAKE FALLS**  
**RED LAKE COUNTY,**  
 STATE OF MINNESOTA

DEPARTMENT OF HIGHWAYS *Edwin* SCALE 1" = 200'

ROAD DESIGNATIONS — U.S. HIGHWAY 107 STATE HIGHWAY 108  
 STATE AID ROAD — COUNTY ROAD — COUNTY AID ROAD  
 STATE LINE — COUNTY LINE

TOWNSHIP RANGE LINE — SECTION LINE  
 1/4 SECTION LINE — 1/2 SECTION LINE  
 BLOCK LINE — LOT LINE

VACATED — CORPORATE LIMITS LINE  
 RAILROADS — RAILROAD R/W LINE  
 GRADE CROSSING — R.A. DEPOT — BRIDGE

OVERSEEN — POWER — RAILROAD — STATE  
 COUNTY — TOWNSHIP — MINES — QUARRIES  
 PUBLIC BUILDINGS — BANK — HOTEL — POST OFFICE  
 COURTHOUSE — SCHOOL — TOWNHALL

STATIONS — STATE — COUNTY — GOLF COURSE  
 HIGHWAY MOUNTAIN DISTRICT HEADQUARTERS — CELESTYNE  
 HYDROGRAPHIC STATION — LOOKOUT STATION  
 TRANSMISSION STATION — HISTORICAL MONUMENT  
 BENCH MARK — STONE MONUMENT — IRON PIPE — LAB  
 AIRPORT

TOWNSHIP AND SECTION CORNERS  
 QUARTER SECTIONS  
 SECTION CORNER ON TWP LINE

CORNER COMMON TO FOUR TWP. CENTER OF SECTION. SECTION CORNER ON TWP LINE.

1" = 200' (AS SHOWN AND BEING OFFICIAL RECORD OF THE STATE OF MINNESOTA)

REC'D BY  
 M.A.B.  
 NOV 05 2004