

*file*

Ordinance No. 142  
 An Ordinance of the City of Mountain Lake  
 Annexing Land Located in the Town of Midway,  
 Cottonwood County, Minnesota to the City of Mountain Lake  
 Pursuant to Minn. Stat. 414.033, Subd       
 Permitting Annexation By Ordinance

The City Council of the City of Mountain Lake ordains:

**Section 1. Territory annexed.**

The corporate limits of the City of Mountain Lake, Minnesota are hereby extended to include the unplatted territory described as follows, Which territory now is and has heretofore been completely surrounded by territory already included within the City

THE SOUTH 1250 FEET OF THE NW 1/4 OF SECTION 34,  
 TOWNSHIP 108 NORTH, RANGE 34 WEST IN MIDWAY TOWNSHIP,  
 COTTONWOOD COUNTY, MINNESOTA, EXCEPT THOSE PARTS PREVIOUSLY  
 ANNEXED

The City Clerk is directed to file certified copies of this ordinance with the Secretary of State, the County Auditor of Cottonwood County in which the property is located, the Town Clerk of Midway Township the affected township residents and the Minnesota Planning Agency. Notification by certified mail 30 days prior to the public hearing

**Section 3. Population**

The population of the annexed area is 0.

**Section 4. Effective date of Annexation.**

This ordinance takes effect upon publication and filing of certified copies as directed in Section 2 and approved by the Minnesota Planning Agency.

A public hearing was held on this ordinance on Monday, November 19, 2001 at 7:00 PM. Adopted by the City Council of Mountain Lake, Minnesota this 19<sup>th</sup> day of November 2001.

  
 Howard Bouchie, Mayor

ATTEST:  
  
 Luayn Murphy, City Administrator

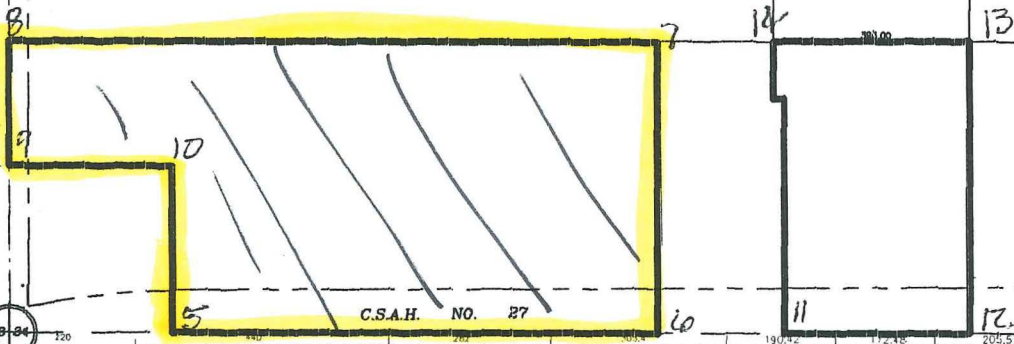
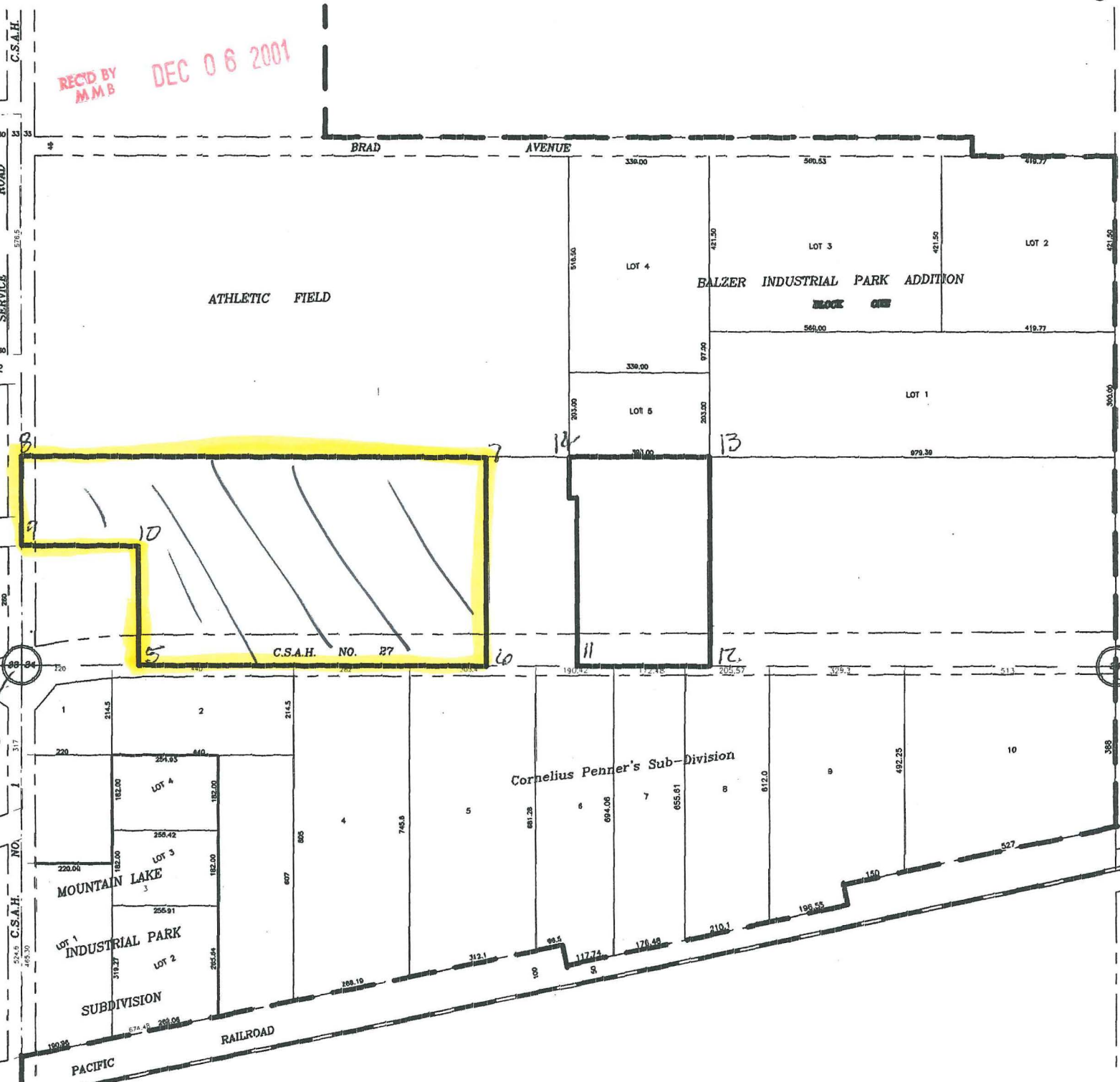
**ANNEXATION DESCRIPTION**

THE SOUTH 1250 FEET OF THE NW 1/4 OF SECTION 34,  
TOWNSHIP 106 NORTH, RANGE 34 WEST IN MIDWAY TOWNSHIP,  
COTTONWOOD COUNTY, MINNESOTA, EXCEPT THOSE PARTS PREVIOUSLY  
ANNEXED.

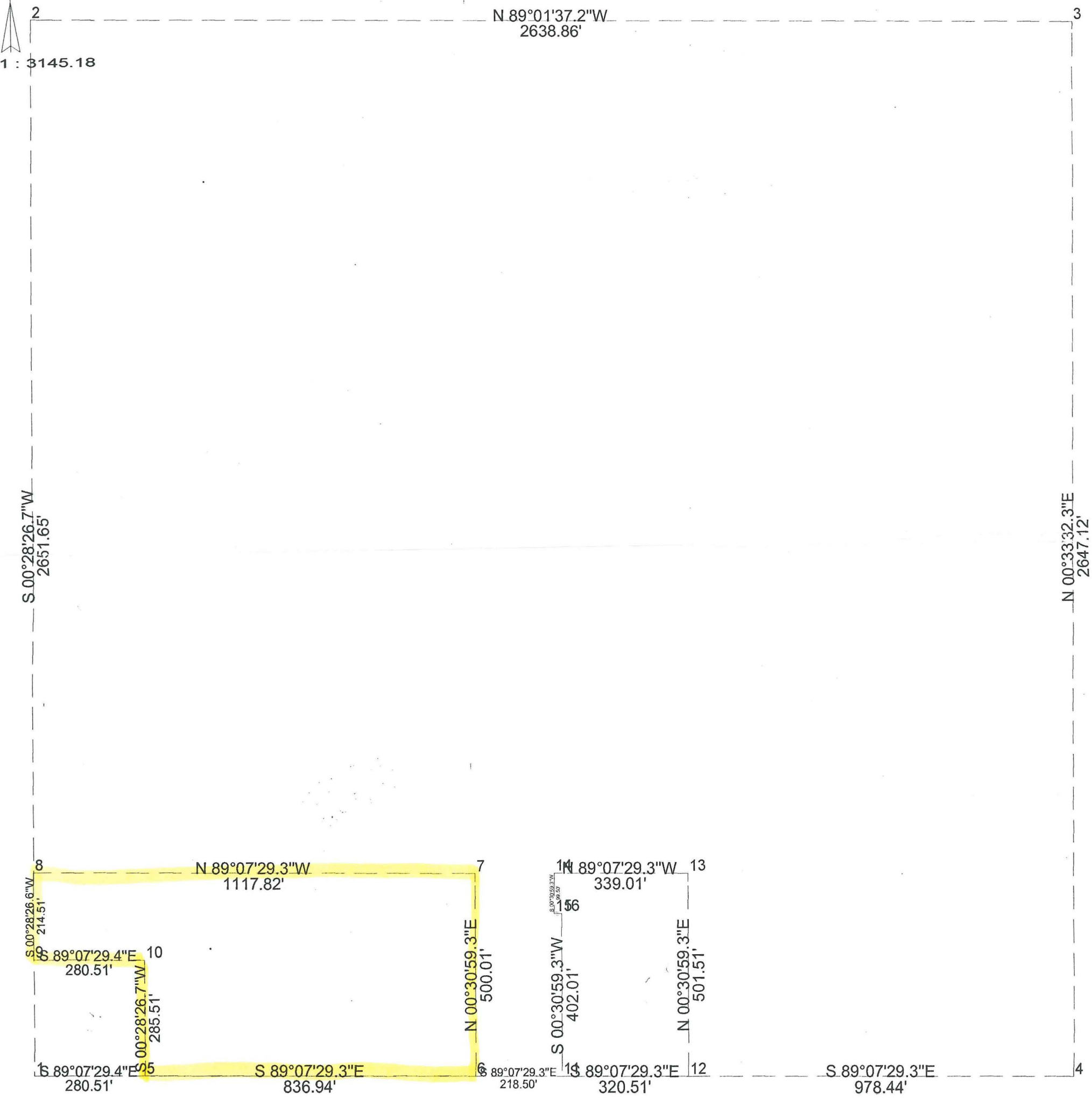
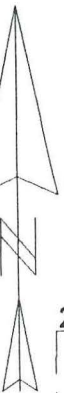
(2)

(3)

REC'D BY  
M.M.B. DEC 06 2001



(4)



REC'D BY  
M.M.B  
DEC 06 2001