

ORDINANCE NO. 203

**AN ORDINANCE EXTENDING THE CORPORATE
LIMITS OF THE CITY OF BRAHAM**

AN ORDINANCE extending the Corporate limits of the City of Braham to include certain unincorporated territory abutting upon the limits of the City and consisting of 7.45 acres or less for which a Petition for Annexation has been received from all property owners of the land.

WHEREAS, the territory described below is not presently within the corporate limits of any incorporated City; and

WHEREAS, this territory abuts upon the corporate limits of the City at the southern boundary of the City which is the northerly line of the property and the property is deemed to be urban or suburban in character or about to become so; and

WHEREAS, this territory consists entirely of an area totaling 7.45 acres; and

WHEREAS, the City has received a valid Petition for Annexation from all the property owners of said land; and

WHEREAS, the population of said area to be annexed is two (2); and

WHEREAS, the area to be annexed is not presently serviced by public sewer facilities or public sewer facilities are not otherwise available; and

WHEREAS, copies of the petition have been filed with the Minnesota Office of Strategic and Long Range Planning, the Township of Stanchfield, and the County of Isanti; and

WHEREAS, the Township of Stanchfield has provided a written waiver of objection to annexation as to the annexation of this real property; and

WHEREAS, as the petition was signed by 100% of the owners of the effected property no public hearing is necessary.

The City Council of Braham ordains:

SECTION 1. TERRITORY ANNEXED

The corporate limits of the City of Braham are hereby extended to include the unplatted territory described as follows, which territory abuts the municipality, consists of approximately 7.45 acres or less, and for which the municipality has received a valid Petition for Annexation from all the owners of said land;

Parcel as described on Exhibit "A" attached hereto.

SECTION 2. FILING

The City Clerk-Administrator is directed to file certified copies of this Ordinance with the Secretary of State, the County Auditor of Isanti County, the Town Clerk of Stanchfield Township and the Minnesota Office of Strategic and Long Range Planning.

SECTION 3. EFFECTIVE DATE OF ANNEXATION

This Ordinance takes effect upon its passage and publication and filing of certified copies as directed in Section 2 and final approval by the Minnesota Office of Strategic and Long Range Planning.

ADOPTED BY THE CITY OF BRAHAM, MINNESOTA ON 5th DAY OF March, 2001.

CITY OF BRAHAM

BY: Very Vungit
ITS: Mayor

REC'D BY
MAR 26 2001

ATTEST:

BY: *Sam A. Hoy*
ITS: City Clerk - Administrator

PUBLISHED IN *Wanto County News* ON *March 21*, 2001.

THIS INSTRUMENT WAS DRAFTED BY:

D. Sherwood McKinnis, I.D. #176898
LINDBERG & MCKINNIS, P.A.
2211 Main Street South
Cambridge, MN 55008
(763) 689-9596

{pj\braham\annexation.dsm}

I certify that I have compared the foregoing copy of Ordinance No. 203 against the original Ordinance No. 203 which is on file in the office of the City Clerk-Administrator, City of Braham, Minnesota, and I hereby certify that the foregoing copy is a true and correct copy of said Ordinance.

Sam A. Hoy
Clerk-Administrator

REC'D. BY MAR 26 2001
M M B

EXHIBIT "A"

Lot 3 Block 1 RJ Addition. Containing 3.00 acres.

And

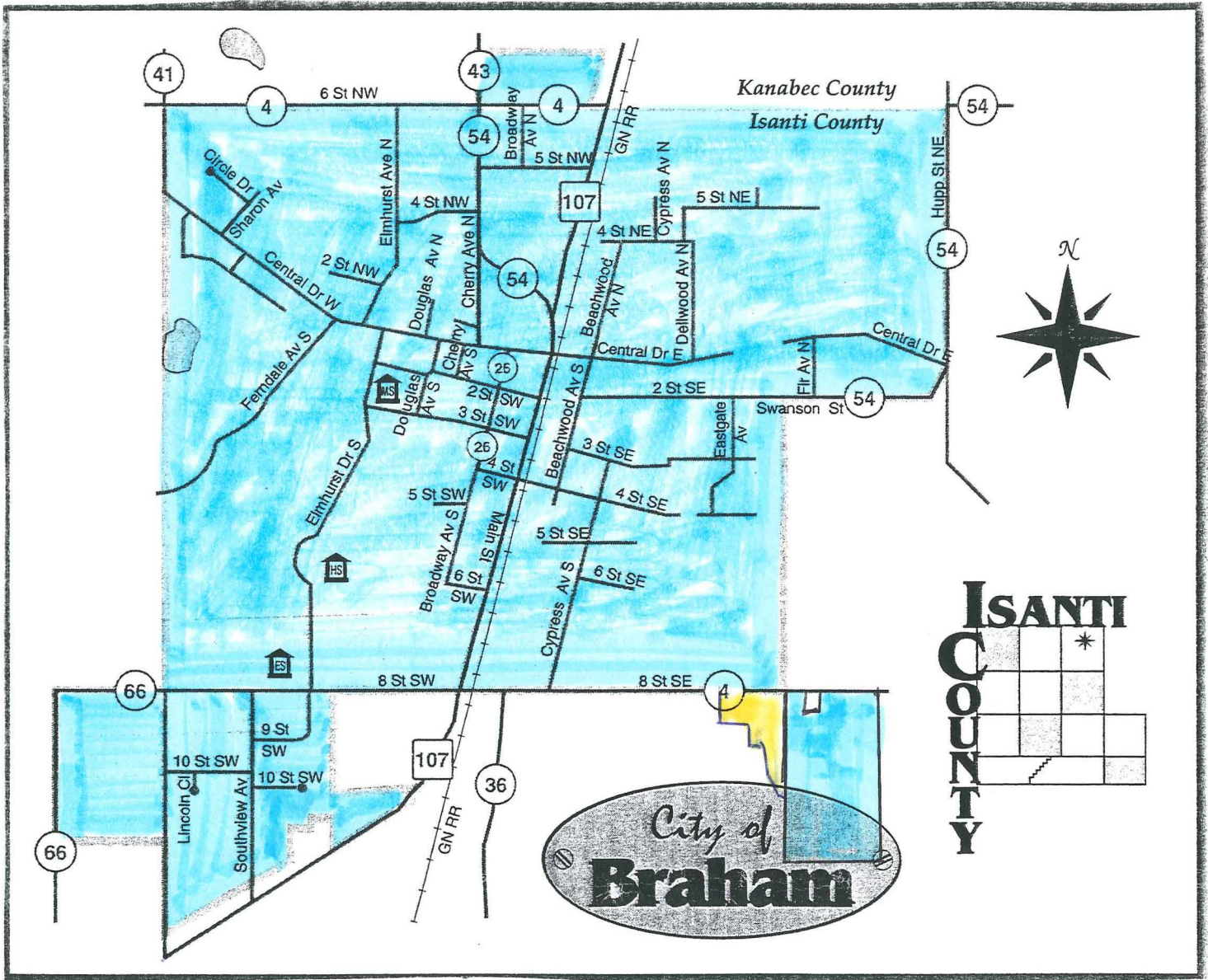
That part of Lot 2 Block 1 RJ Addition described as follows: Beginning at the northwest corner of Lot 3 Block 1 RJ Addition; thence South 90 degrees 00 minutes 00 seconds West, plat bearing, along the north line of said Lot 2 Block 1, a distance of 208.71 feet; thence South 0 degrees 23 minutes 41 seconds East a distance of 208.71 feet; thence South 90 degrees 00 minutes 00 seconds East, a distance of 208.71 feet to the west line of said Lot 3 Block 1; thence North 0 degrees 23 minutes 41 seconds West along said west line, a distance of 208.71 feet to the point of beginning. Containing 1.00 acre.

And

That part of Lot 2 Block 1 RJ Addition described as follows: Beginning at the southeast corner of Lot 3 Block 1 RJ Addition; thence North 90 degrees 00 minutes 00 seconds West, plat bearing, along the south line of said Lot 3 Block 1, a distance of 299.66 feet; thence South 19 degrees 31 minutes 26 seconds East a distance of 258.34 feet; thence South 0 degrees 23 minutes 41 seconds East, a distance of 255.27 feet; thence South 30 degrees 52 minutes 55 seconds East, a distance of 215.44 feet, to a point on the southerly line of said Lot 2 Block 1; thence South 61 degrees 22 minutes 09 seconds East, along said southerly line, a distance of 120.88 feet to the southeast corner of said Lot 2 Block 1; thence North 0 degrees 23 minutes 41 seconds West, along the east line of said Lot 2, a distance of 741.58 feet to the point of beginning. Containing 3.45 acres.

The above three parcels containing 7.45 acres.

All in RJ Addition, according to the plat thereof, on file and of record in the office of the County Recorder, Isanti County, Minnesota.



Existing city limits
shown in blue.

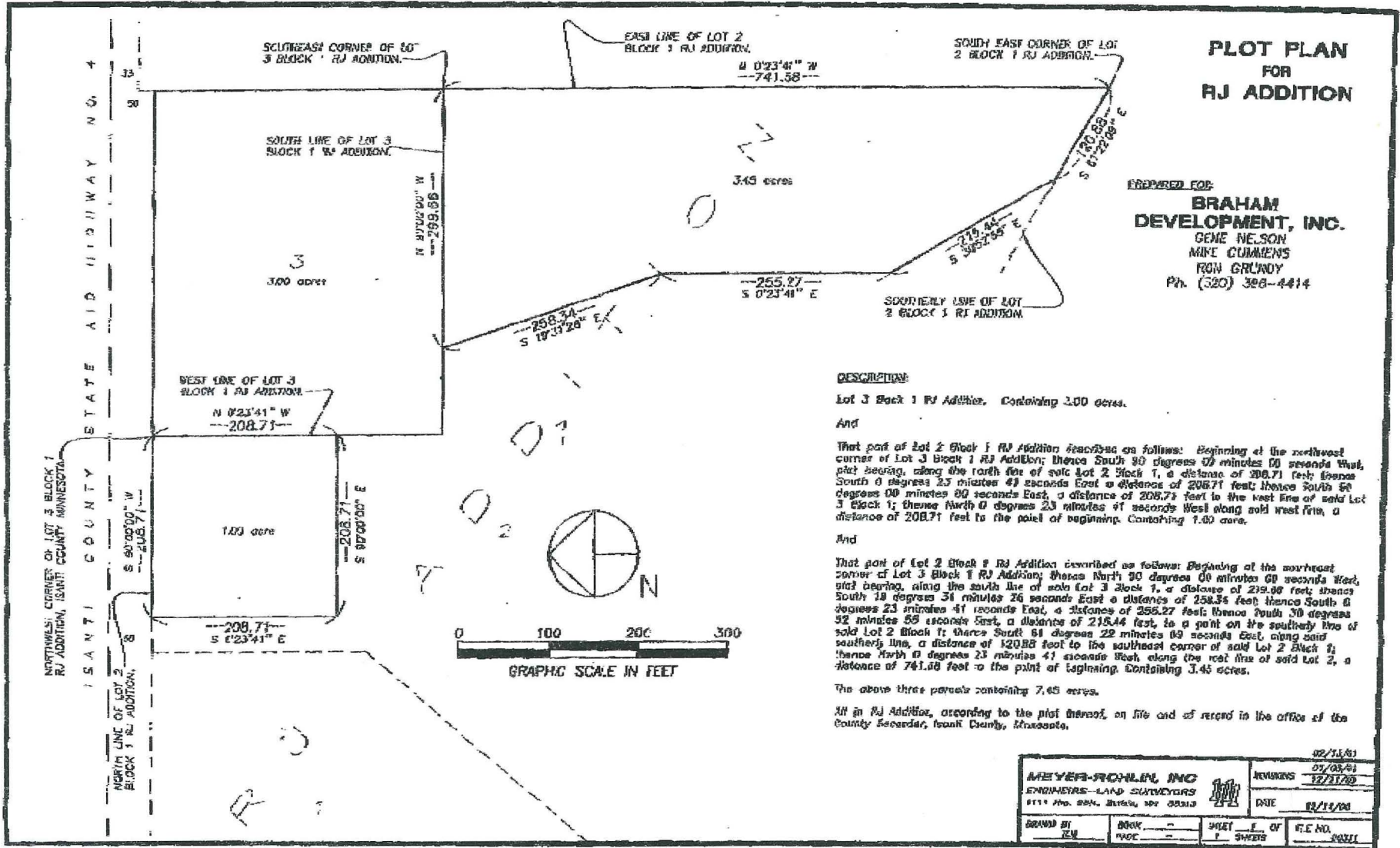
Subject shown in yellow

Feb. 13 2001 01:33PM P2

FOX NO. : 6125829492

FROM :

REC'D. BY MMB MAR 27 2001



OLD - Since revised

REC'D. BY M.M.P. MAR 27 2001

PLOT PLAN FOR RJ ADDITION

PREPARED FOR:

BRAHAM DEVELOPMENT, INC.

GENE NELSON
MIKE CUMMENS
RON GRUNDY

Ph. (320) 396-4414

NORTHWEST CORNER OF LOT 3 BLOCK 1 RJ ADDITION, ISANTI COUNTY MINNESOTA.

ISANTI COUNTY STATE AID HIGHWAY NO. 4

NORTH LINE OF LOT 2 BLOCK 1 RJ ADDITION.

S 90°00'00" W
239.73

33
50

SOUTHEAST CORNER OF LOT 3 BLOCK 1 RJ ADDITION.

SOUTH LINE OF LOT 3 BLOCK 1 RJ ADDITION.

N 90°00'00" W
299.66

3
3.00 acres

WEST LINE OF LOT 3 BLOCK 1 RJ ADDITION.

N 0°23'41" W
241.09

208.71

1.00 acres

208.71

S 90°00'00" E
239.73

208.71

S 0°23'41" E
241.09

EAST LINE OF LOT 2 BLOCK 1 RJ ADDITION.

N 0°23'41" W
741.58

SOUTH EAST CORNER OF LOT 2 BLOCK 1 RJ ADDITION.

3.61 acres

3.45

215.44'
S 30°52'55" E

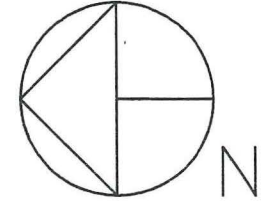
245.88'
S 61°22'09" E

255.27'

S 0°23'41" E
380.27

SOUTHERLY LINE OF LOT 2 BLOCK 1 RJ ADDITION.

258.34'
S 19°31'26" E



GRAPHIC SCALE IN FEET

DESCRIPTION:

Lot 3 Block 1 RJ Addition. Containing 3.00 acres.

And

That part of Lot 2 Block 1 RJ Addition described as follows: Beginning at the northwest corner of Lot 3 Block 1 RJ Addition; thence South 90 degrees 00 minutes 00 seconds West, plat bearing, along the north line of said Lot 2 Block 1, a distance of ~~239.73~~ 208.71 feet; thence South 0 degrees 23 minutes 41 seconds East a distance of 241.09 feet; 208.71 thence South 90 degrees 00 minutes 00 seconds East, a distance of ~~239.73~~ 208.71 feet to the west line of said Lot 3 Block 1; thence North 0 degrees 23 minutes 41 seconds West along said west line, a distance of 241.09 feet to the point of beginning. Containing 1.33 acres.

And

That part of Lot 2 Block 1 RJ Addition described as follows: Beginning at the southeast corner of Lot 3 Block 1 RJ Addition; thence North 90 degrees 00 minutes 00 seconds West, plat bearing, along the south line of said Lot 3 Block 1, a distance of 299.66 feet; thence South 19 degrees 31 minutes 26 seconds East a distance of 258.34 feet; 255.27 thence South 0 degrees 23 minutes 41 seconds East, a distance of 380.27 feet, to a point on the southerly line of said Lot 2 Block 1; thence South 61 degrees 22 minutes 09 seconds East, along said southerly line, a distance of 245.88 feet to the southeast corner of said Lot 2 Block 1; thence North 0 degrees 23 minutes 41 seconds West, along the east line of said Lot 2, a distance of 741.58 feet to the point of beginning. Containing 3.61 acres.

The above three parcels containing 7.94 acres.

All in RJ Addition, according to the plat thereof, on file and of record in the office of the County Recorder, Isanti County, Minnesota.

MEYER-ROHLIN, INC		REVISIONS <u>12/21/00</u>	
ENGINEERS—LAND SURVEYORS		DATE <u>12/11/00</u>	
1111 Hwy. 25N., Buffalo, MN 55313			
DRAWN BY TCM	BOOK PAGE	SHEET <u>1</u> OF 1 SHEETS	FILE NO. 00331