

Resolution 01-02

Resolution annexing unincorporated property by board order.

WHEREAS, the City of New London has deemed the following areas are subject to annexation pursuant to Minnesota Statutes 414.031.

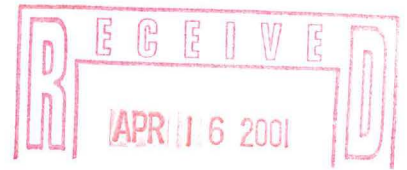
CEDAR CRESCENT FIRST ADDITION – includes the following lots and blocks: Lots 3 and Lots 5 to 11, inclusive, Block 1. CEDAR CRESCENT ADDITION – includes the following lots and blocks: Lots 1 to 4, inclusive, Block 1 and Lots 1 to 7, inclusive, Block 2. **An area of about 6.07 acres.**

LUNDBERGS OAK RIDGE ESTATES – includes the following lots and blocks: Lots 1 to 7, inclusive, Block 1; Lots 1 to 3, inclusive, Block 2; Lots 1 to 3, inclusive, Block 3; Lot 1, inclusive, Block 4; Lots 1 to 9, inclusive, Block 1, First Addition to Lundbergs Oak Ridge Estates; Lots 1 to 6, inclusive, Block 1, Third Addition to Lundbergs Oak Ridge Estates; Lots 1 to 11, inclusive, Block 1, Second Addition to Lundbergs Oak Ridge Estates. **An area of about 41.33 acres.**

CHAPIN-THORSON ADDITION – includes the following lots and blocks: Lots 1 to 6, inclusive, Block 1; and Lots 1 to 3, inclusive, Block 2. **An area of about 13.13 acres.**

POLMAN ADDITION – includes the following lots and blocks: Lots 1, 2, 9 and all that part of Lot 3 of Block L of Polman Addition to New London Station described as follows: Commencing at the Southwest corner of Lot 2 in said Block L; thence West along the South boundary of said Lot 3 a distance of 46.86 feet; thence North on a line parallel with the East boundary of said Lot 3 a distance of 84.88 feet to a point on the North boundary of said Lot 3 to the Northeast corner of said Lot 3; thence South along the East boundary of said Lot 3 a distance of 120 feet to the point of beginning, all in Block L of Polman Addition to New London. **An area of about .83 acres.**

POLMAN ADDITION – includes the following lots and blocks: Lots 1, 2, 8, 9 and 10, and that portion of Lots 3, 4, 6 and 7 lying Northeasterly of the center line of State Highway No. 9 of Block G, subject to the highway easement; and, Lots 1, 2, 3, 4, 5, 7, 8, 9 and 10, and that portion of Lot 6 lying Northwesterly of the center line of State highway No. 23, of Block H subject to the highway easement; and, Block I comprised of Lots 1 to 10, inclusive; and Block K, comprised of Lots 1 to 10, inclusive; and Lots 4, 5, 6, 7, 8 and 9 of Block L, and Lot 3 excepting there from the following: Commencing at the Southwest corner of Lot 2 in said Block L; thence West along the South boundary of said Lot 3 a distance of 46.86 feet; thence North on a line parallel with the East boundary of said Lot 3 a



Resolution 01-02 (page 2)

Resolution annexing unincorporated property by board order.

distance of 84.88 feet to a point on the North boundary of said Lot 3 thence Northeasterly along the North line of said Lot 3; thence South along the East boundary of said Lot 3 a distance of 120 feet to the point of beginning, in Block L; and, Block M; and, Block N, comprised of Lots 1 and 2 inclusive, all in Polman Addition to New London Station. **An area of about 11.02. acres**

The parties entitled to notice under section 414.09 are New London Township and Kandiyohi County.

WHEREAS, the City of New London has deemed that the present population and land use of the proposed properties for annexation are contiguous with the boundaries of the City of New London; the present pattern of development of the proposed properties for annexation are residential and commercial; the present governmental services being provided in New London should be extended to the areas proposed for annexation; and the relationship and effect of the of the proposed annexation is consistent with the urban characteristics of the area which is to be annexed.

NOW, THEREFORE BE IT RESOLVED BY THE CITY COUNCIL OF NEW LONDON, MINNESOTA: that the following areas are urban in nature and are subject to annexation pursuant to Minnesota Statutes 414.031.

CEDAR CRESCENT FIRST ADDITION – includes the following lots and blocks: Lots 3 and Lots 5 to 11, inclusive, Block 1. CEDAR CRESCENT ADDITION – includes the following lots and blocks: Lots 1 to 4, inclusive, Block 1 and Lots 1 to 7, inclusive, Block 2. **An area of about 6.07 acres.**

LUNDBERGS OAK RIDGE ESTATES – includes the following lots and blocks: Lots 1 to 7, inclusive, Block 1; Lots 1 to 3, inclusive, Block 2; Lots 1 to 3, inclusive, Block 3; and, Lot 1, Block 4. Lots 1 to 9, inclusive, Block 1, First Addition to Lundbergs Oak Ridge Estates; Lots 1 to 6, inclusive, Block 1, Third Addition to Lundbergs oak Ridge Estates; Lots 1 to 11, inclusive, Block 1, Second Addition to Lundbergs Oak Ridge Estates. **An area of about 41.33 acres.**

CHAPIN-THORSON ADDITION – includes the following lots and blocks: Lots 1 to 6, inclusive, Block 1; and Lots 1 to 3, inclusive, Block 2. **An area of about 13.13 acres.**



Resolution 01-02 (page 3)

Resolution annexing unincorporated property by board order.

POLMAN ADDITION – includes the following lots and blocks: Lots 1, 2, 9 and all that part of Lot 3 of Block L of Polman Addition to New London Station described as follows: Commencing at the Southwest corner of Lot 2 in said Block L; thence West along the South boundary of said Lot 3 a distance of 46.86 feet; thence North on a line parallel with the East boundary of said Lot 3 a distance of 84.88 feet to a point on the North boundary of said Lot 3 to the Northeast corner of said Lot 3; thence South along the East boundary of said Lot 3 a distance of 120 feet to the point of beginning, all in Block L of Polman Addition to New London. **An area of about .83 acres.**

POLMAN ADDITION – includes the following lots and blocks: Lots 1, 2, 8, 9 and 10, and that portion of Lots 3, 4, 6 and 7 lying Northeasterly of the center line of State Highway No. 9 of Block G, subject to the highway easement; and, Lots 1, 2, 3, 4, 5, 7, 8, 9 and 10, and that portion of Lot 6 lying Northwesterly of the center line of State highway No. 23, of Block H subject to the highway easement; and, Block I comprised of Lots 1 to 10, inclusive; and Block K, comprised of Lots 1 to 10, inclusive; and Lots 4, 5, 6, 7, 8 and 9 of Block L, and Lot 3 excepting there from the following: Commencing at the Southwest corner of Lot 2 in said Block L; thence West along the South boundary of said Lot 3 a distance of 46.86 feet; thence North on a line parallel with the East boundary of said Lot 3 a distance of 84.88 feet to a point on the North boundary of said Lot 3 thence Northeasterly along the North line of said Lot 3; thence South along the East boundary of said Lot 3 a distance of 120 feet to the point of beginning, in Block L; and, Block M; and, Block N, comprised of Lots 1 and 2 inclusive, all in Polman Addition to New London. **An area of about 11.02 acres.**

Adopted this 17th day of January, 2001.

SIGNED:



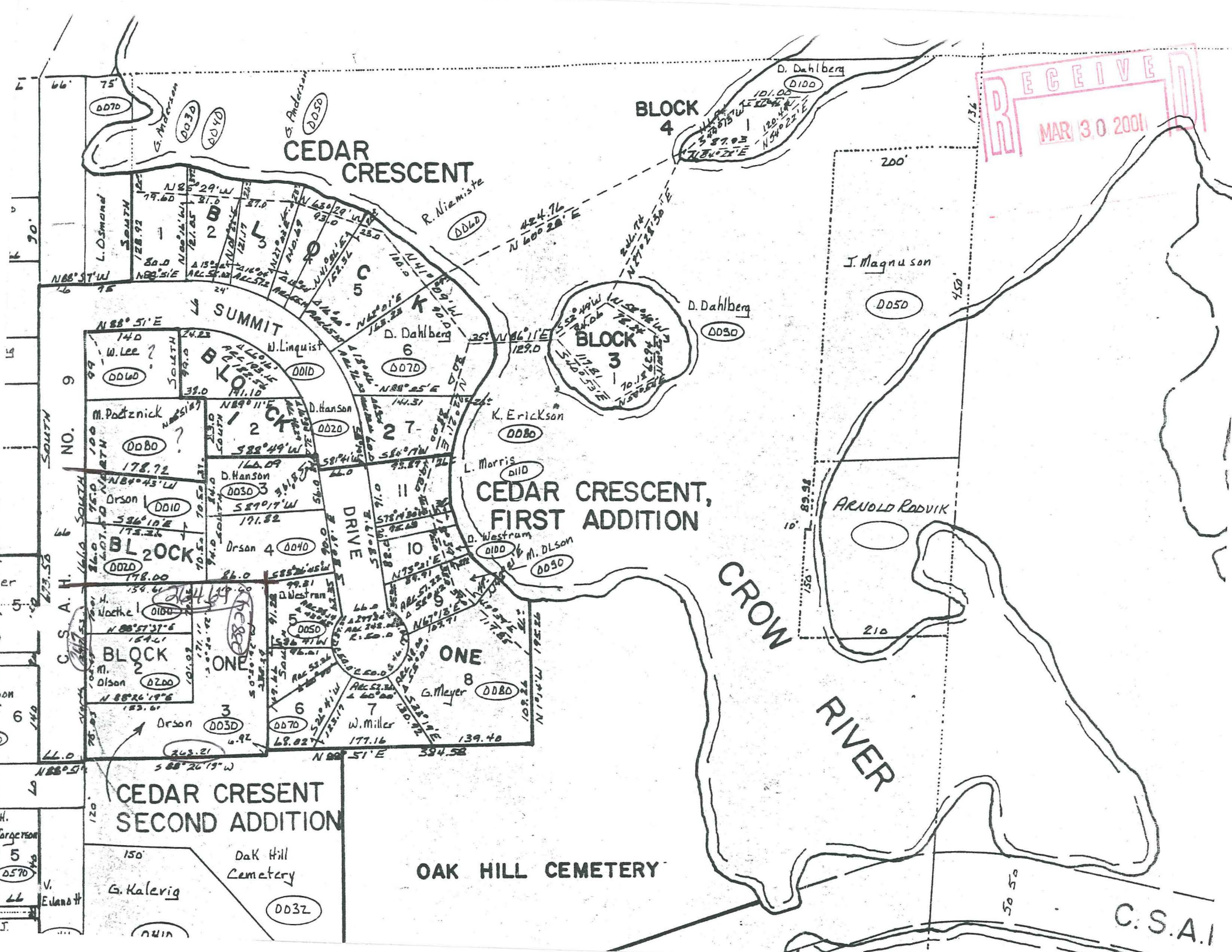
John Mack, Mayor

ATTEST:



Trudie Amundson, City Clerk

RECEIVED
MAR 30 2001



CEDAR
CRESCENT

BLOCK
4

BLOCK
3

CEDAR CRESCENT,
FIRST ADDITION

CROW
RIVER

CEDAR CRESCENT
SECOND ADDITION

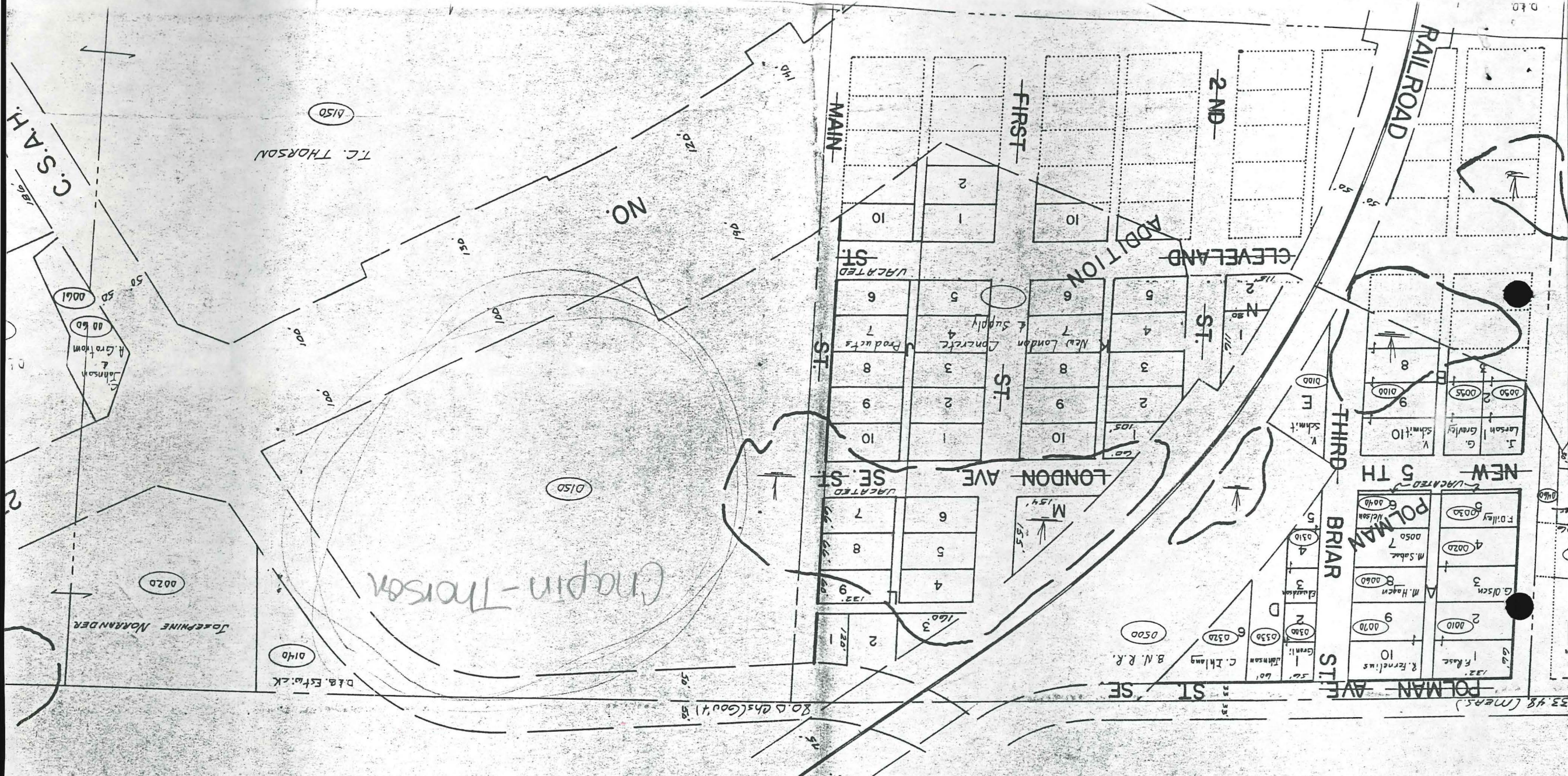
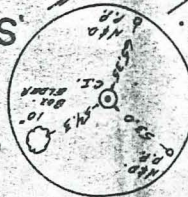
OAK HILL CEMETERY

C.S.A.I

SECTION

N 1/4 COR. SEC. 15

RECEIVED
MAR 30 2001

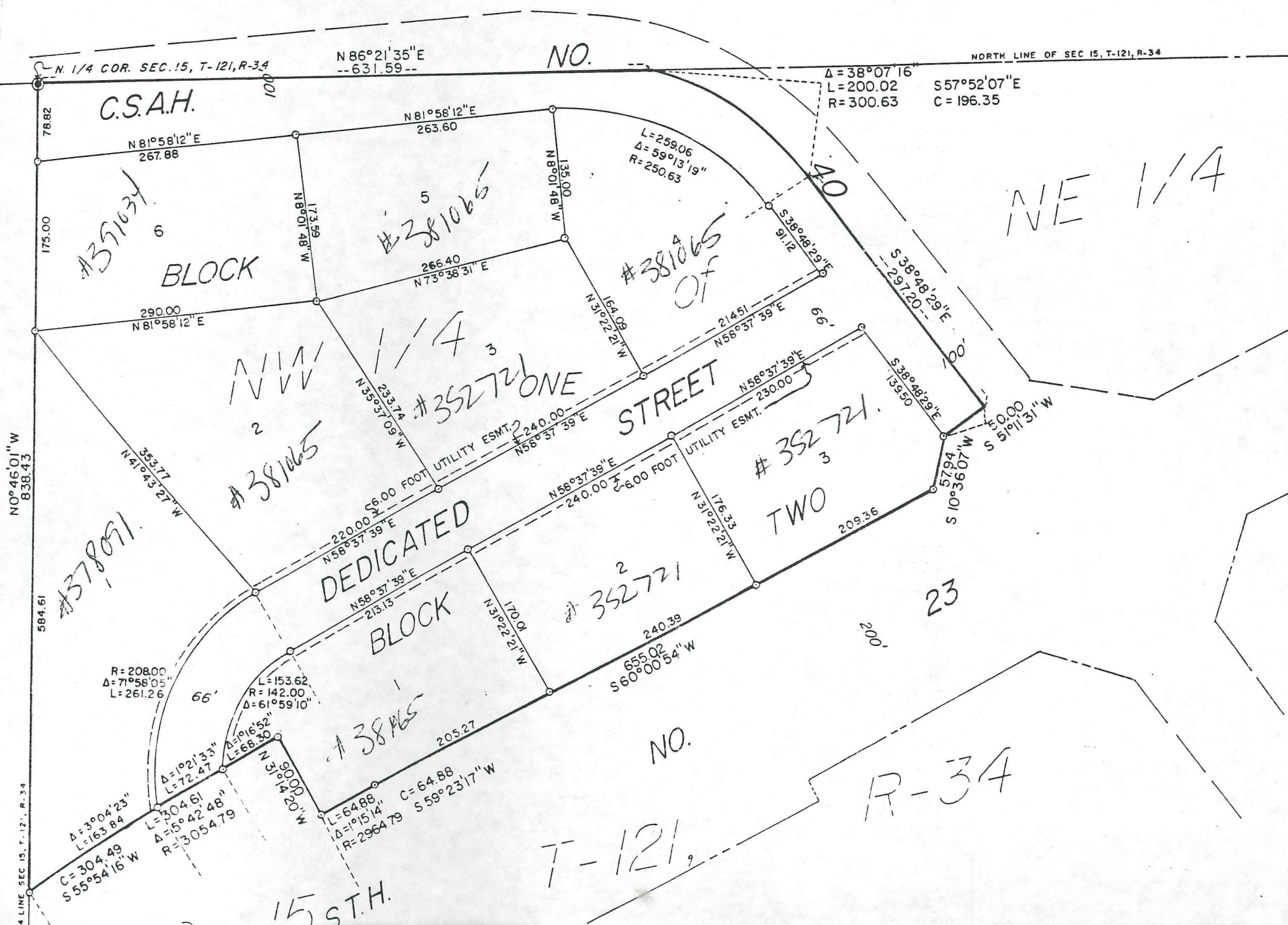


RECEIVED
MAR 30 2001

CHAPIN-THORSON ADDITION

SPICER, MN.

ALL BEARINGS ARE ASSUMED
TOTAL AREA 13.13 ACRES MORE OR LESS



Southwest, 200.02 distance of S 57° 297.20 feet to its a bearing of S 51° 1 along last said right-of-way line, feet having a delta S 59° 23' 17" W, 64. said right-of-way along last said right and a chord bearing NE 1/4; thence on a

Have caused the said this plat and hereby

Witness our hands this

Leonard Earl Chapin
Leonard Earl Chapin

Diana Lynn Chapin
Diana Lynn Chapin

STATE OF MINNESOTA
COUNTY OF KANDIYOHE
August

STATE OF MINNESOTA
COUNTY OF KANDIYOHE
August

STATE OF MINNESOTA
COUNTY OF KANDIYOHE
August
of New London, a M.

I, Robert M. O. Bo
CHAPIN-THORSON ADDI
correctly shown on
in the ground as s
are no wet lands or

STATE OF MINNESOTA
COUNTY OF KANDIYOHE
day of *August*

Approved by the Pl



REC'D. BY
MMB FEB 26 2001

KEY MAP
CITY OF NEW LONDON

MAP