

ORDINANCE NO. 437, Second Series

AN ORDINANCE EXTENDING THE CORPORATE LIMITS OF THE CITY OF MARSHALL TO INCLUDE CERTAIN UNINCORPORATED PROPERTY ABUTTING UPON THE LIMITS OF THE CITY OF MARSHALL.

WHEREAS, The territory described below is not presently within the corporate limits of any incorporated city; and is less than 60 acres and is legally described as follows, to-wit:

All that part of the Southeast Quarter (SE¼) of Section Thirty-two (32), Township One hundred Twelve (112) North, Range Forty-one (41) West, Lyon County, Minnesota, described as follows:

Commencing at the SE corner of said SE¼; thence North 00°14'14" East, assumed bearing, along the East line of said SE¼, a distance of 1742.70 feet, to the point of beginning; thence North 89° 45'46" West a distance of 392.00 feet; thence North 00°14'14" East, parallel with said East line, a distance of 233.00 feet; thence South 89°45'46" East a distance of 257.00 feet; thence South 00°14'14" West a distance of 85.00 feet; thence South 89°45'46" East a distance of 135.00 feet, to a point on said East line; thence South 00°14'14" West, along said East line, a distance of 148.00 feet, to the point of beginning.

Said tract of land is subject to any existing highways, roadways, or easements; and

WHEREAS, The territory being annexed is not presently served by public sewer facilities or public sewer facilities are not otherwise available, and the municipality has received a petition for annexation by all of the property owners of said land; and

WHEREAS, The City of Marshall does hereby ordain:

Section 1. **Territory Annexed.** The corporate limits of the City of Marshall are hereby extended to include the unplatted property described as follows to-wit:

All that part of the Southeast Quarter (SE¼) of Section Thirty-two (32), Township One hundred Twelve (112) North, Range Forty-one (41) West, Lyon County, Minnesota, described as follows:

Commencing at the SE corner of said SE¼; thence North 00°14'14" East, assumed bearing, along the East line of said SE¼, a distance of 1742.70 feet, to the point of beginning; thence North 89° 45'46" West a distance of 392.00 feet; thence North 00°14'14" East, parallel with said East line, a distance of 233.00 feet; thence South 89°45'46" East a distance of 257.00 feet; thence South 00°14'14" West a distance of 85.00 feet; thence South 89°45'46" East a distance of 135.00 feet, to a point on said East line; thence South 00°14'14" West, along said East line, a distance of 148.00 feet, to the point of beginning.

Said tract of land is subject to any existing highways, roadways, or easements.

which is owned by Philip O. Sonstegard, as Trustee of the Josephine Sonstegard Trust dated June 26, 1992.

Section 2. **Filing.** The Clerk/Financial Director is directed to filed certified copies of this ordinance with the Secretary of State, The County Auditor of Lyon County and the Town Clerk of the affected township and the Minnesota Municipal Board.

Section 3. **Effective date of Annexation.** This ordinance takes effect upon it passage and publication and the filing of certified copies as directed above.

REC'D. BY NOV 28 2000
MMP

Passed and adopted by the Common Council this 7th day of August,
2000.

ATTEST:

Thomas M. Meubloesch
Clerk/Financial Director

THE COMMON COUNCIL

Maurice Stores
President Pro-tem

INTRODUCED:

July 3, 2000

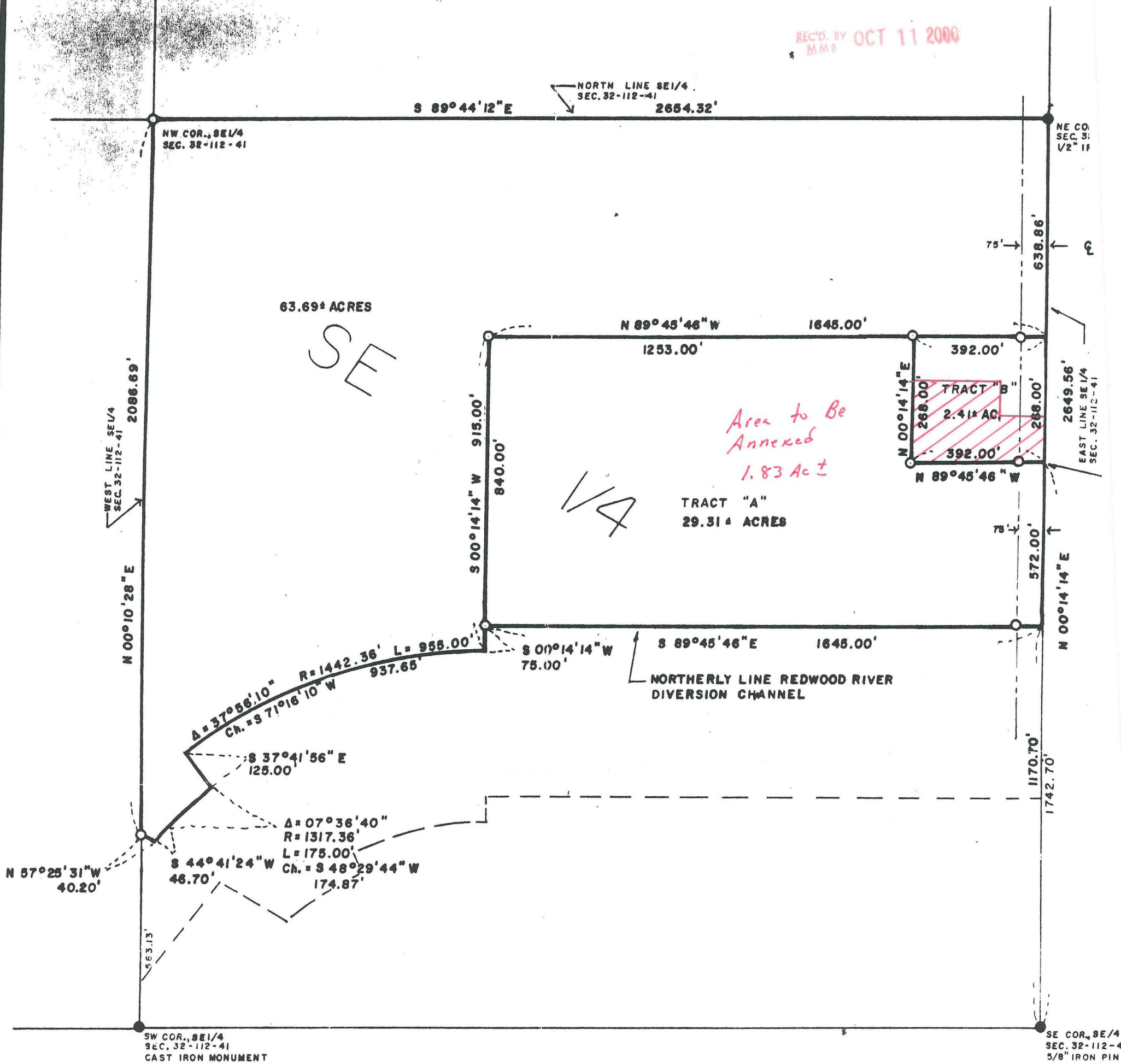
FINAL PASSAGE ON:

August 7, 2000

PUBLISHED IN THE MARSHALL INDEPENDENT

August 12, 2000

REC'D. BY OCT 11 2000
MMB



REC'D. BY
JMMB OCT 11 2000



Area to Be
Annexed
See Larger Drawing

CITY OF MARSHALL
LYON COUNTY, MINNESOTA

REVISED: MAY 1997
Date
KEITH NELSON
City Engineer

