

REC'D. BY
MMB NOV 02 2000

ORDINANCE NO. 2000-3

AN ORDINANCE EXTENDING THE CORPORATE LIMITS
OF THE CITY OF ST. MARTIN
TO INCLUDE CERTAIN UNINCORPORATED UNPLATTED LAND
NOT EXCEEDING 200 ACRES IN AREA
ABUTTING UPON THE CITY LIMITS

WHEREAS, a certain petition dated June 12, 2000, requesting annexation of the territory hereinafter described was duly presented to the council on the 9th day of OCTober, 2000; and

WHEREAS, the petition was signed by the sole fee owner of said territory; and

WHEREAS, the land described in the Petition abuts upon the City limits at the northerly boundary thereof;

The Council of the City of St. Martin, Minnesota, ordains:

Section 1. The City Council hereby determines (1) that the territory described herein abuts upon the City limits and is about to become urban or suburban in character; and (2) that none of the territory is now included within the limits of any City.

Section 2. Territory Annexed. The corporate limits of the City are hereby extended to include the unplatted land described as follows and the same is hereby annexed to and included within the City as effectually as if it had originally been a part thereof:

That part of Lot No. 51 of AUDITOR'S SUBDIVISION No. 7 of Section 35, Township 124 North, Range 32 West, according to the recorded plat thereof on file and of record in the Office of the County Recorder, Stearns County, Minnesota, described as follows: Beginning at the Northeast corner of ST. MARTIN INDUSTRIAL PARK, according to the recorded plat thereof on file and of record in the Office of the County Recorder, Stearns County, Minnesota; thence North 89° 55' 41" East (assumed bearing) along the North line of said Lot No. 51, a distance of 451.51 feet; thence South 00° 09' 54" East, parallel with the East line of said ST. MARTIN INDUSTRIAL PARK, a distance of 1323.42 feet to the South line of said Lot No. 51; thence South 89° 47' 25" West, along said South line, a distance of 451.50 feet to the southeast corner of said ST. MARTIN INDUSTRIAL PARK; thence North 00° 09' 54" West, along the East line of said

ST. MARTIN INDUSTRIAL PARK, a distance of 1324.50 feet to the point of beginning.

Containing 13.72 acres, more or less.

Section 3. Zoning Classification. The area annexed as described in Section 2 of this ordinance is hereby classified as Industrial as defined in the City of St. Martin Zoning Ordinance No. 2000-3 and the Zoning Administrator is hereby directed to amend the official Zoning Map to display the annexed area and the zoning classification.

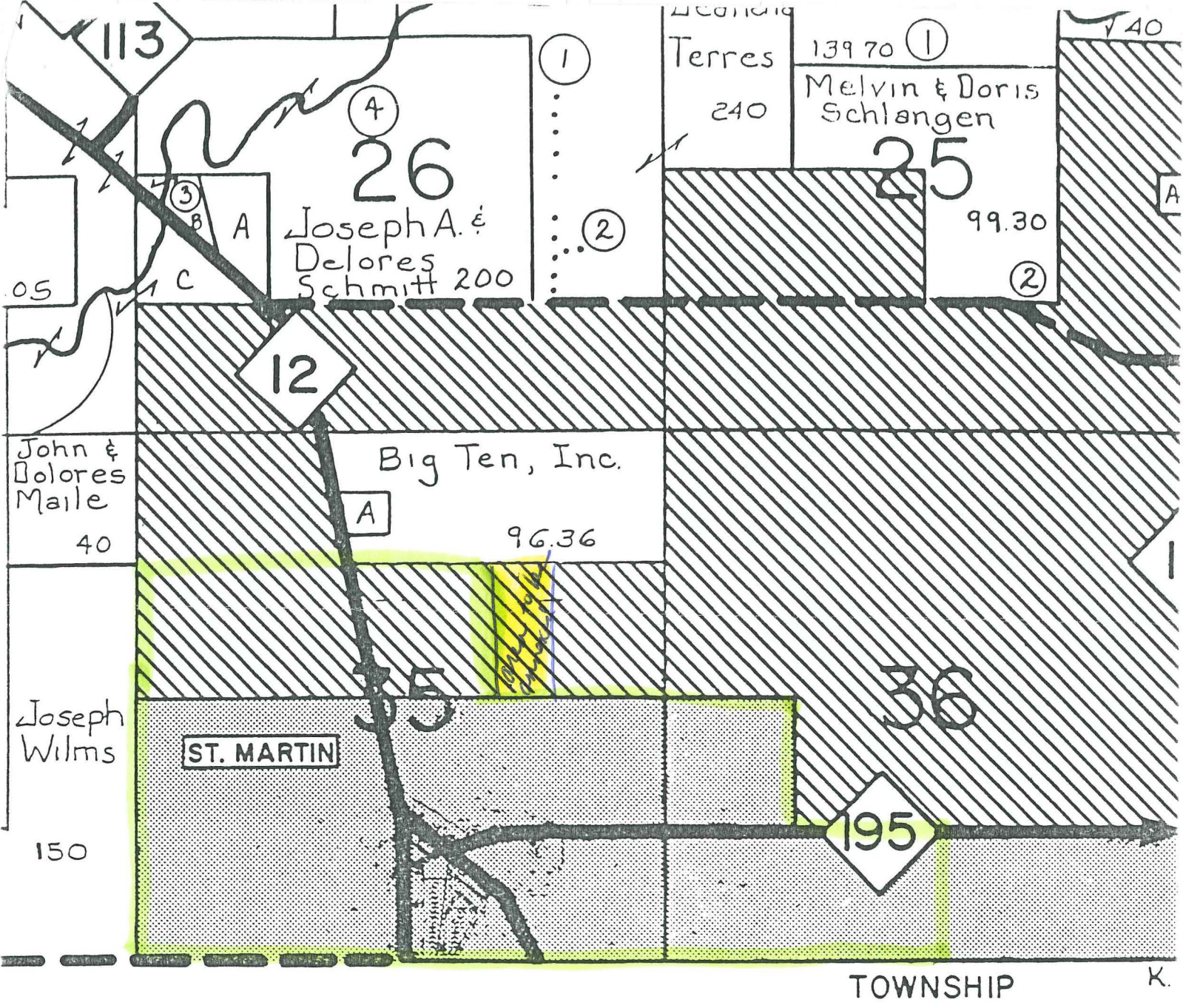
Section 4. Filing. The City Clerk/Treasurer is hereby directed to file certified copies of this ordinance with the Minnesota Municipal Board, the Secretary of State, and Town Clerk for St. Martin Township, and the Stearns County Auditor.

Section 5. Effective Date. This ordinance takes effect upon its passage and publication and the filing of certified copies as directed in Section 4, and approval of the ordinance by the Minnesota Municipal Board.

Adopted by the Council this 9th day of OCTOBER, 2000.



Joseph Kalthoff
Mayor



TOWNSHIP MAPS

current city limits

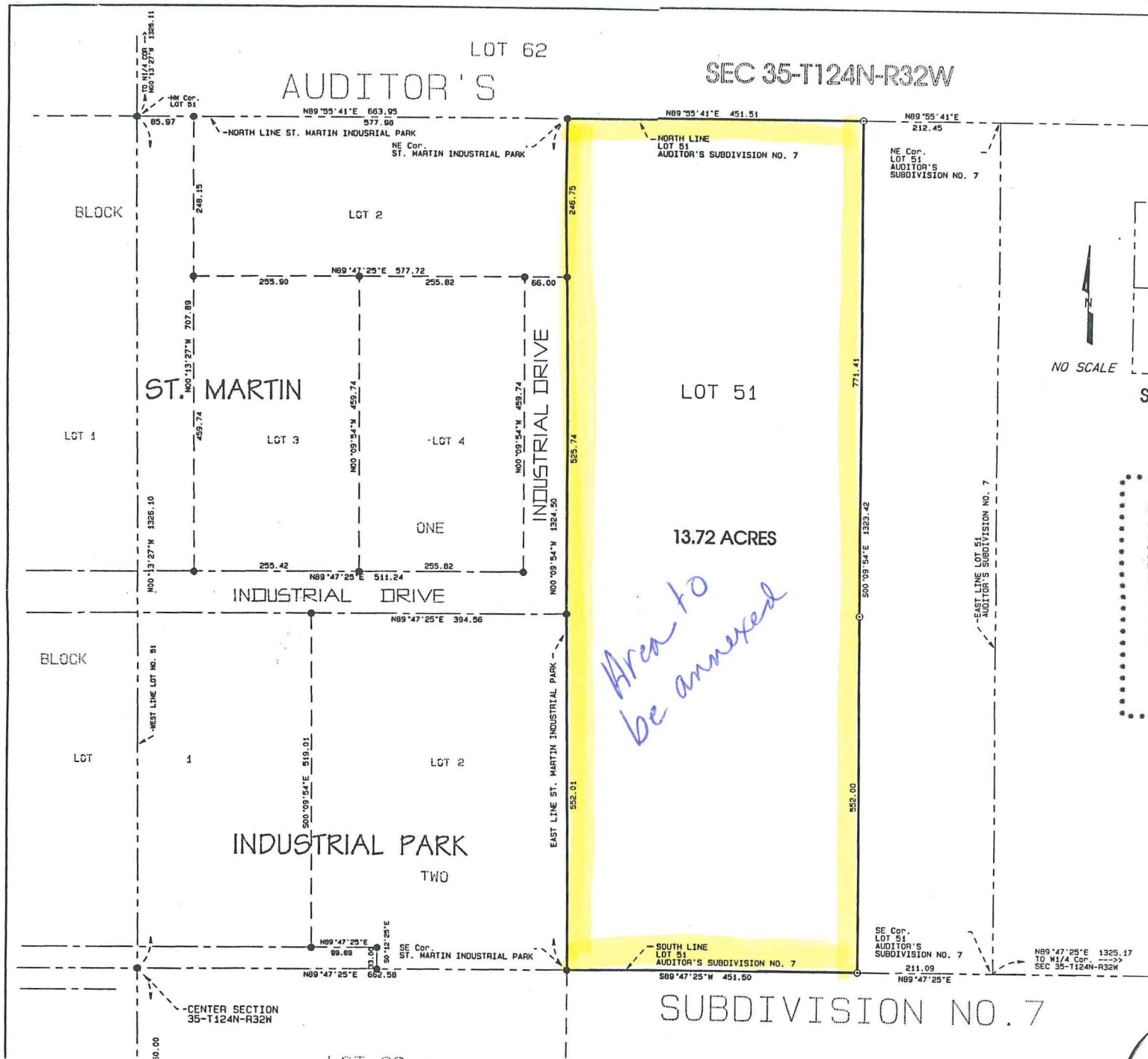
= proposed area for annexation

REC'D. BY JUL 06 2000
MMB

LOT 62

SEC 35-T124N-R32W

AUDITOR'S



Area to be annexed



City Map Attached

REC'D. BY JUL 06 2000
MMB