

ORDINANCE NO. 11.11

AN ORDINANCE EXTENDING THE CORPORATE LIMITS OF THE CITY OF KILKENNY, LE SUEUR COUNTY, MINNESOTA, TO INCLUDE CERTAIN LAND OWNED BY SHARI LYNN CONNELL AND RONALD CHARLES KURTZHALS AND ABUTTING THE CITY OF KILKENNY, LE SUEUR COUNTY, MINNESOTA, A MINNESOTA MUNICIPAL CORPORATION.

Whereas, Shari Lynn Connell and Ronald Charles Kurtzhals, joint tenants, have filed a petition dated March 13, 2000, requesting that certain land as legally described below:

That part of the Northwest Quarter of the Northeast Quarter of Section 27, Township 110 North, Range 23 West, Le Sueur County, Minnesota, described as follows: Beginning at a point on the extended West line of Block 1, Knapp's Addition, said point being 307.00 feet South of the Southwest Corner of Lot 8, Block 1, Knapp's Addition; thence continuing South 00 degrees 25 minutes 49 seconds East on said extended West line, 115.00 feet; thence North 89 degrees 29 minutes 58 seconds East, 222.82 feet to the centerline of Linden Avenue; thence North 06 degrees 25 minutes 06 seconds West on said centerline, 115.62 feet; thence South 89 degrees 29 minutes 58 seconds West, 210.76 feet to the point of beginning. Said parcel contains 0.57 acres of land being subject to and together with any and all easements of record.

to be annexed to the City of Kilkenney, Le Sueur County, a Minnesota municipal corporation (hereinafter City of Kilkenney); and

WHEREAS, Shari Lynn Connell and Ronald Charles Kurtzhals, joint tenants, represent that they are the sole owners of the property, that the property is unincorporated, abuts the limits of the City of Kilkenney, is not included within any other municipality, and is not included in any area that has already been designated for orderly annexation pursuant to Minnesota Statutes Section 414.0325, will use this site for residential purposes, will need city services, and is approximately .57 acres in size; and

WHEREAS, such described land is now or about to become urban or suburban in character and that the same is residential property and in need of municipal sewer and water services; and

WHEREAS, a public hearing regarding the matter was held on April 18, 2000, at 7:30 p.m. in the Kilkenny City Hall per Minnesota Statutes Section 414.033, Subdivision 2(2b).

NOW THEREFORE, the City Council of the City of Kilkenny, Minnesota, does hereby ordain:

Section 1: The City Council determines and finds that the property abuts the municipality, that the area to be annexed is 60 acres or less, that the property is not included in any area that has already been designated for orderly annexation pursuant to Minnesota Statutes Section 414.0325, that the municipality has received a properly prepared petition for annexation from the owner of the property, and that the petition complies with all provisions of Minnesota Statutes Section 414.033.

Section 2: The property is urban in nature or about to become so and will be used by Shari Lynn Connell and Ronald Charles Kurtzhals, a joint tenants, for residential purposes, and will need city services.

Section 3: The corporate limits of the City of Kilkenny are hereby extended to include the property and the same is hereby annexed to and included within the City of Kilkenny as if the property had originally been part thereof.

Section 4: The City Clerk is directed to file certified copies of this ordinance with the Minnesota Municipal Board, Kilkenny Township, the Le Sueur County Auditor, the Le Sueur County Recorder, and the Minnesota Secretary of State.

Section 5: This ordinance takes effect upon its passage and publication and the filing of the certified copies as direction in Section 4 and upon approval of the ordinance by the Minnesota Municipal Board.

Adopted this 18th day of April, 2000.

Clarence Babe Miller
Clarence "Babe" Miller, Mayor

ATTEST:

Maria Stoering
Maria Stoering, City Clerk/Treasurer

Council Member Leora Hogan introduced the above ordinance and moved for its adoption. Council Member Mary Hagerty seconded the ordinance and the following voted in favor thereof: Clarence Miller, Leora Hogan, Mary Hagerty,
William Carlson, and Mark Pittman
and the following voted against same: None
whereby the ordinance was declared duly passed and ordained.

This is a true and correct copy of the City of Kilkenny Ordinance No. 11.11 as attested to by City Clerk/Treasurer Maria Stoering.

Maria Stoering
Maria Stoering, City Clerk/Treasurer

111 vacated 10-3-78

CHICAGO

CHICAGO AND WESTERN

ST. 10

REC'D. BY JUN 14 2000
M.M.B.

LINDEN

AVE.

AVE.

LAKEVIEW AVE.

MOND LAKE

NO. 6

3.14 AC
(30.46 ac 5.14)

06.999.0150

380'

360'

27.36'

90.36'

LAUREL

ELM

OX

ST

ST

ST

ST

ST

ST

ST

ST

ST

ST

ST

ST

ST

ST

ST

ST

ST

ST

ST

ST

ST

ST

ST

ST

ST

ST

ST

ST

ST

ST

ST

ST

ST

ST

ST

ST

ST

ST

ST

ST

ST

ST

ST

ST

ST

ST

ST

ST

ST

ST

ST

ST

ST

ST

ST

ST

ST

ST

ST

ST

ST

ST

ST

ST

ST

ST

ST

ST

ST

ST

ST

ST

ST

ST

ST

ST

ST

ST

ST

ST

ST

ST

ST

ST

ST

ST

ST

ST

ST

ST

ST

ST

ST

ST

ST

ST

ST

ST

ST

ST

ST

ST

ST

ST

ST

ST

ST

ST

ST

ST

ST

ST

ST

ST

ST

ST

ST

ST

ST

ST

ST

ST

ST

ST

ST

ST

ST

ST

ST

ST

ST

ST

ST

ST

ST

ST

ST

ST

ST

ST

ST

ST

ST

ST

ST

ST

ST

ST

ST

ST

ST

ST

ST

ST

ST

ST

ST

ST

ST

ST

ST

ST

ST

ST

ST

ST

ST

ST

ST

ST

ST

ST

ST

ST

ST

ST

ST

ST

ST

ST

ST

ST

ST

ST

ST

ST

ST

ST

ST

ST

ST

ST

ST

ST

ST

ST

ST

ST

ST

ST

ST

ST

ST

ST

ST

ST

ST

ST

ST

ST

ST

ST

ST

ST

ST

ST

ST

ST

ST

ST

ST

ST

ST

ST

ST

ST

ST

ST

ST

ST

ST

ST

ST

ST

ST

ST

ST

ST

ST

ST

ST

ST

ST

ST

ST

ST

ST

ST

ST

ST

ST

ST

ST

ST

ST

ST

ST

ST

ST

ST

ST

ST

ST

ST

ST

ST

ST

ST

ST

ST

ST

ST

ST

ST

ST

ST

ST

ST

ST

ST

ST

ST

ST

ST

ST

ST

ST

ST

ST

ST

ST

ST

ST

ST

ST

ST

ST

ST

ST

ST

ST

ST

ST

ST

ST

ST

ST

ST

ST

ST

ST

ST

ST

ST

ST

ST

ST

ST

ST

ST

ST

ST

ST

ST

ST

ST

ST

ST

ST

ST

ST

ST

ST

ST

ST

ST

ST

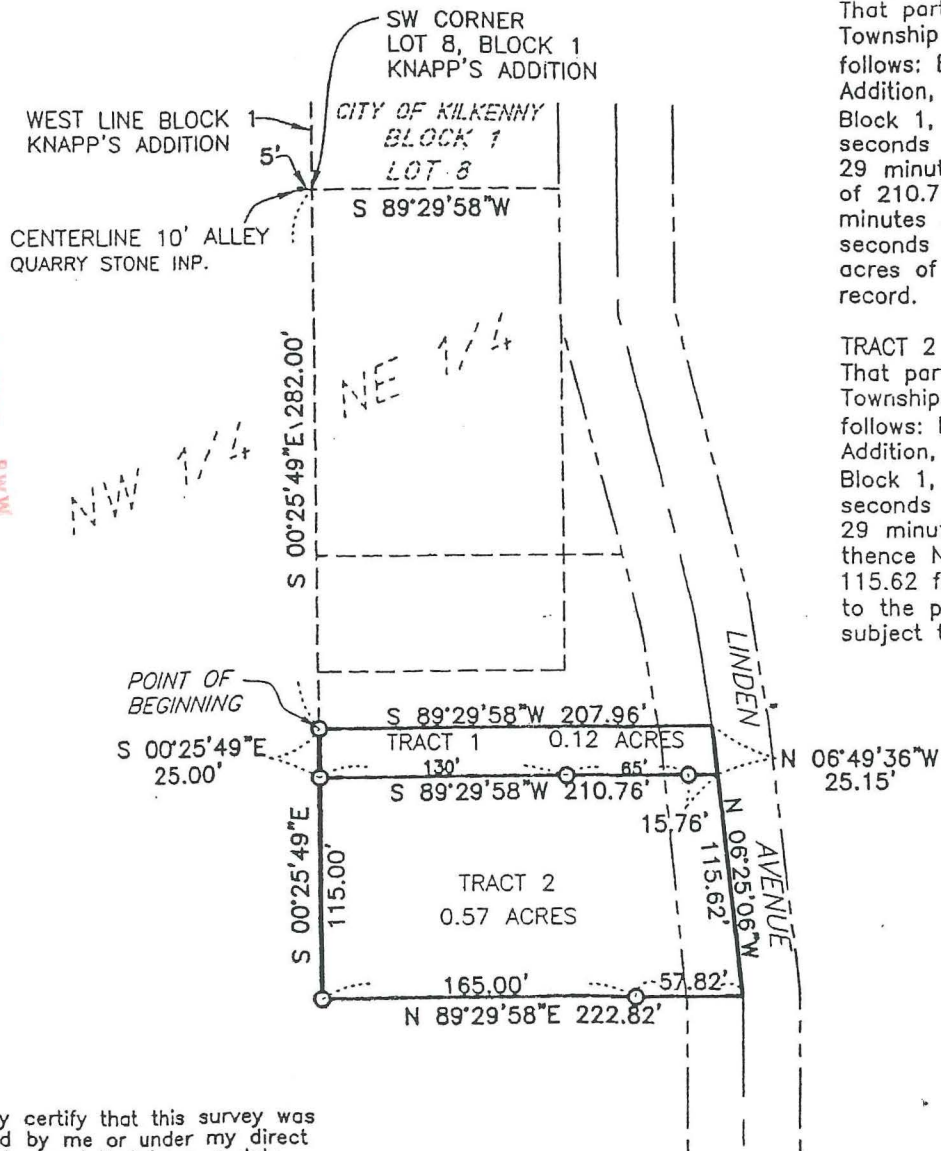
ST

ST

ST

ST

REC'D. BY JUN 14 2000
J.M.B.



TRACT 1

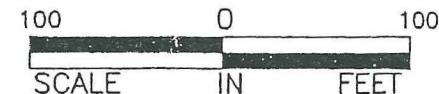
That part of the Northwest Quarter of the Northeast Quarter of Section 27, Township 110 North, Range 23 West, Le Sueur County, Minnesota, described as follows: Beginning at a point on the extended West line of Block 1, Knapp's Addition, said point being 282.00 feet South of the Southwest Corner of Lot 8, Block 1, Knapp's Addition; thence continuing South 00 degrees 25 minutes 49 seconds East on said extended West line, 25.00 feet; thence North 89 degrees 29 minutes 58 seconds East parallel to the South line of said Lot 8, a distance of 210.76 feet to the centerline of Linden Avenue; thence North 06 degrees 49 minutes 36 seconds West, 25.15 feet; thence South 89 degrees 29 minutes 58 seconds West, 207.96 feet to the point of beginning. Said parcel contains 0.12 acres of land and is subject to and together with any and all easements of record.

TRACT 2

That part of the Northwest Quarter of the Northeast Quarter of Section 27, Township 110 North, Range 23 West, Le Sueur County, Minnesota, described as follows: Beginning at a point on the extended West line of Block 1, Knapp's Addition, said point being 307.00 feet South of the Southwest Corner of Lot 8, Block 1, Knapp's Addition; thence continuing South 00 degrees 25 minutes 49 seconds East on said extended West line, 115.00 feet; thence North 89 degrees 29 minutes 58 seconds East, 222.82 feet to the centerline of Linden Avenue; thence North 06 degrees 25 minutes 06 seconds West on said centerline, 115.62 feet; thence South 89 degrees 29 minutes 58 seconds West, 210.76 feet to the point of beginning. Said parcel contains 0.57 acres of land being subject to and together with any and all easements of record.

LEGEND

- O 3/4" IRON PIPE MONUMENT SET
MARKED BY REG. NO. 19789
- IRON MONUMENT FOUND



I hereby certify that this survey was prepared by me or under my direct supervision and that I am a duly Registered Land Surveyor under the laws of the State of Minnesota.

Rory Jensen
RORY JENSEN

8/25/99 License No. 19789
Date

CERTIFICATE OF SURVEY LE SUEUR COUNTY, MINNESOTA



BOLTON & MENK, INC

CONSULTING ENGINEERS & SURVEYORS

515 NORTH RIVERFRONT DRIVE, MANKATO, MN. 56001 (507) 825-4171

MANKATO, MN FAIRMONT, MN SLEEPY EYE, MN
BURNSVILLE, MN WILLMAR, MN AMES, IA LIBERTY, MO

REVISED:

I:\DATA\31087C01.DWG 08-24-1999 11:24a.m.

SCALE: 1" = 100'
FIELD BOOK: SEE FILE
JOB NUMBER: M35.31087
I:\DATA\31087C01.CRD
F:\SURVEY\31087DES.WPD
DRAWN BY: MRY

PART OF THE NW 1/4 - NE 1/4
SEC. 27-110-23 KILKENNY TWP.,
LE SUEUR COUNTY, MINNESOTA

FOR: MATHILDA STANGLER TRACTS