

Reserved for recording purposes

**ORDINANCE #486**

**AN ORDINANCE OF THE CITY OF PRINCETON ANNEXING LAND LOCATED IN THE TOWN OF BALDWIN, SHERBURNE COUNTY, MINNESOTA TO THE CITY OF PRINCETON, SHERBURNE COUNTY, MINNESOTA, PURSUANT TO MINNESOTA STATUTE §414.033 SUBD 2(1) PERMITTING ANNEXATION BY ORDINANCE.**

\*\*\*\*\*

**THE CITY OF PRINCETON HEREBY ORDAINS:**

Section 1. That the unincorporated land legally described in Attachment A located in the Town of Baldwin, Sherburne County, Minnesota is land which abuts the municipality, is owned by the municipality, and is urban or suburban in character or about to become so.

Section 2. That the corporate limits of the City of Princeton are hereby extended to include the land legally described above containing approximately 12 acres, and the same is hereby annexed to be included within the City of Princeton, Sherburne County, Minnesota.

Section 3. That the area legally described above is not within any designated floodplain or shoreland area.

Section 4. That the City Administrator of the City of Princeton is hereby authorized and directed to file a copy of this Ordinance with the Minnesota Planning Office of Strategic and Long-Range Planning, the Minnesota Secretary of State, and the Sherburne County Auditor and the Baldwin Town Clerk.

REC'D. BY  
M M B MAY 22 2000

Section 5. That this Ordinance shall be in full force and effect and final upon the date this Ordinance is approved by the Minnesota Planning Office of Strategic and Long-Range Planning.

**ADOPTED** by the City Council this 13<sup>th</sup> day of April, 2000.

  
\_\_\_\_\_  
Don Whitcomb, Mayor

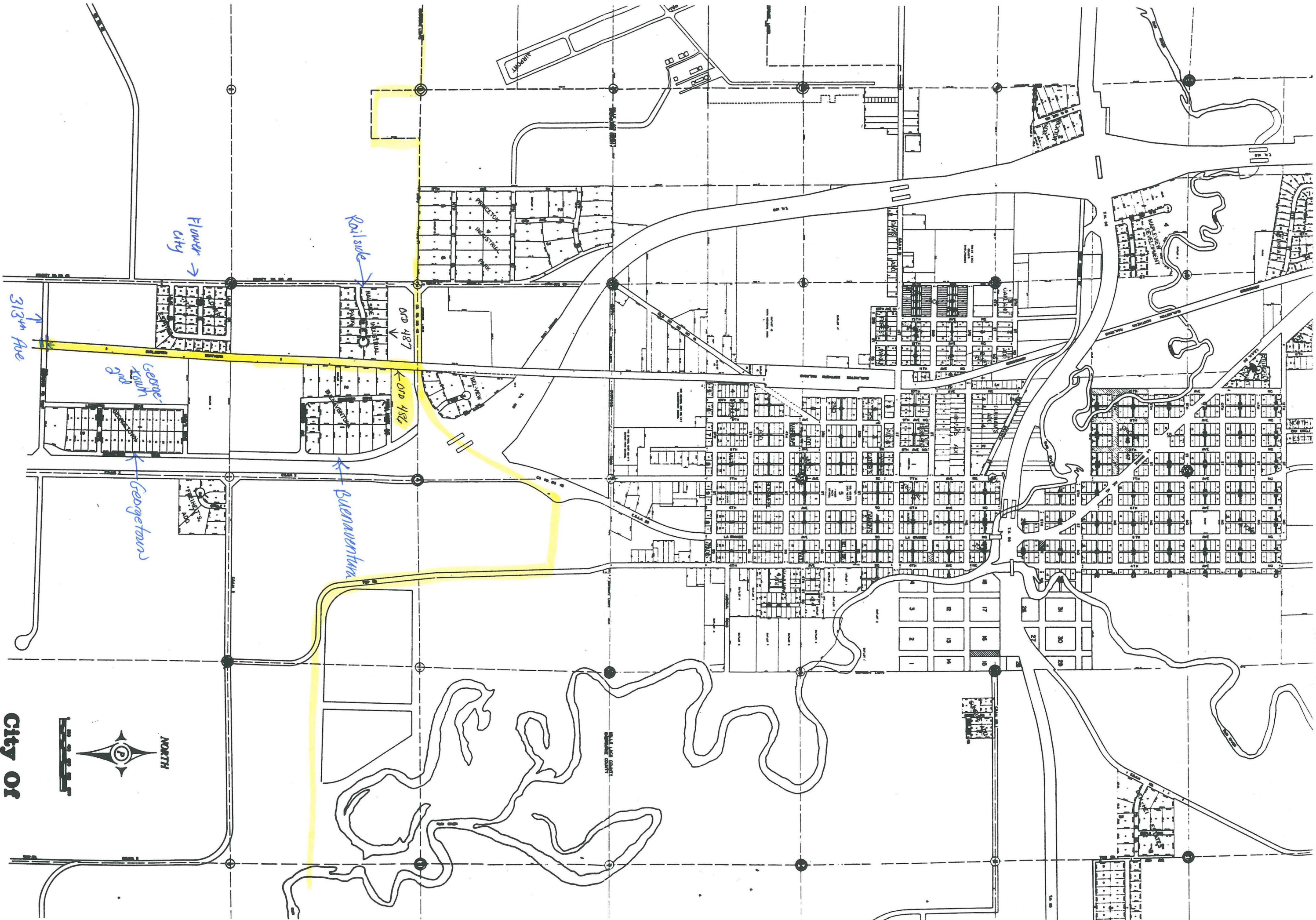
ATTEST:

  
\_\_\_\_\_  
David J. Minke  
City Administrator

REC'D. BY  
M.A.B. MAY 22 2000

**Attachment A**

All that portion of Burlington Northern Railroad Company's (formerly Great Northern Railway Company) 100.0 foot wide Elk River to Princeton Minnesota Branch Line right of way, now discontinued, being 50.0 feet wide on each side of said Railroad Company's Main Track centerline, as originally located and constructed upon, over and across the W ½ SW ¼ of Section 4; and the W ½ NW ¼ of Section 9, all in Township 35 North, Range 26 West of the 4<sup>th</sup> Principal Meridian, Sherburne County, Minnesota, bounded between the North line of said W ½ SW ¼ of Section 4 and the South line of said W ½ NW ¼ of Section 9.



REC'D. BY  
M.A.M. MAY 22 2000

# PRINCETON, MINNESOTA

CITY OF