

ORDINANCE NO. 117

AN ORDINANCE EXTENDING THE CORPORATE LIMITS OF THE CITY OF FRAZEE TO INCLUDE CERTAIN UNINCORPORATED TERRITORY PURSUANT TO MINN. STAT. 414.003, Subd. 2(2).

WHEREAS, certain land described below is not presently included within the corporate limits of any incorporated city; and

WHEREAS, the below described land is 40 acres or less in area and the land is completely surrounded by land within the municipal limits and is deemed to be urban or suburban in character;

The City Council of Frazee, Minnesota Ordains:

Section 1: **Territory annexed.** The corporate limits of the City of Frazee, Minnesota, are hereby extended to include the unplatted land described as follows:

That part of the Northeast Quarter of the Southeast Quarter in Section 27, Township 138 North, Range 40 West of the 5th P.M. in Becker Co., Minn., described as follows;

Commencing at a found iron monument which designates the east quarter corner of said Section 27; thence S. 00° 31' 50" E. 440.45 ft. on an assumed bearing along the east line of said Section 27 to an iron monument; thence continuing S. 00° 31' 50" E. 400.60 ft. along the east line of said Section 27 to an iron monument, said point is the point of beginning; thence S. 87° 32' 33" W. 205.68 ft. to an iron monument; thence S. 01° 12' 59" E. 471.28 ft. to an iron monument on the south line of said NE1/4 SE1/4; thence S. 88° 55' 10" E. 200.00 ft. along the south line of said NE1/4 SE 1/4; thence N. 00° 31' 50" W. 483.79 ft. along the east line of said Section 27 to the point of beginning.

Which land is 40 acres or less in area and the land is completely surrounded by land within the municipal limits.

Section 2: **Filing.** The City Clerk is directed to file certified copies of this ordinance with the Secretary of State, the County Auditor of the Becker County Minnesota, the Town Clerk of Burlington Township Minnesota and the State of Minnesota Office of Strategic and Long-Range Planning.

Section 3. **Effective date of annexation.** This ordinance takes effect upon passage and publication, the filing of certified copies as directed in Section 2 of this ordinance, and approval by the State of Minnesota Office of Strategic and Long-Range Planning.

Adopted by the City Council of Frazee, Minnesota, this 10 day of January, 2000

Attest:

Fred Dagggett
Mayor

Attest:

Terri Osterman
Clerk

Published in Frazee Forum, a legal newspaper in the State of Minnesota, on the 27 day of January, 2000.

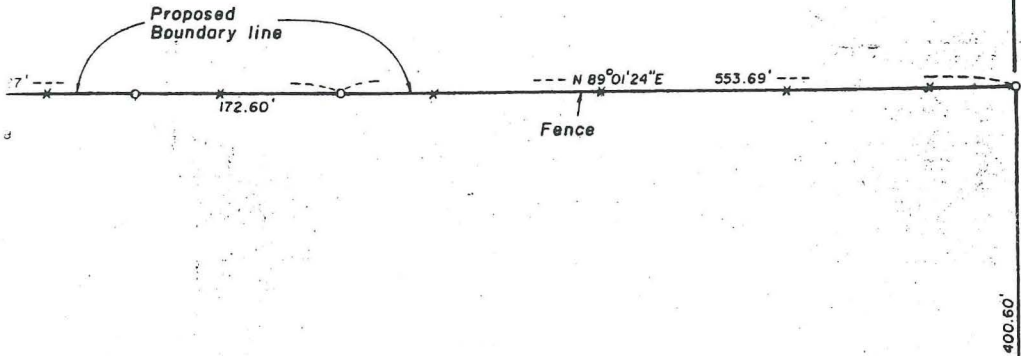
CERTIFICATE OF SURVEY

THE EAST HALF OF THE SOUTHEAST QUARTER
SECTION 27-138-40
BECKER COUNTY, MINNESOTA

REC'D. BY FEB 23 2000
M.A.B.

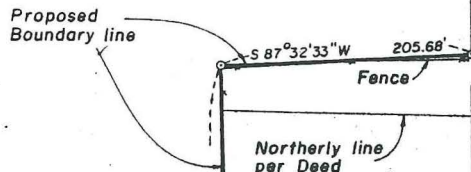


East Quarter Corner
of Section 27-138-40



NE 1/4 - SE 1/4

SECTION 27-138-40

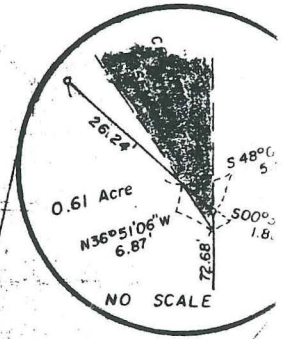


East line of
Section 27-138-40

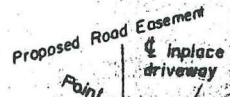
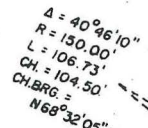
Approximate location of railroad spur
from field location. Railroad bed gone
and most evidence of spur is obliterated.
In 1902 Chillon deeds to
Commonwealth Lumber Co. a 25' wide
strip for a railroad spur.

EXCEPTION

2.22 Acres



South line of the
N.E. 1/4 - S.E. 1/4



Southeast Corner of
the N.E. 1/4 - S.E. 1/4



SE 1/4 - S.E. 1/4

Approximate property
line per deed.



Created Driveway
Easement

0.03
of Lot
not loc
this su

Concrete Curb
and Gutter

Northeasterly
Lot 13, Blac

property
d.
10'

Northerly line of
Burlington Northern
Inc. Railroad

AMENDED PL.