

Ordinance 2000-1

AN ORDINANCE EXTENDING THE CORPORATE LIMITS OF THE CITY OF MEADOWLANDS TO INCLUDE, E 220 ft. of N 278 ft. of NW Quarter of NE Quarter, Section 22, Township 53, Range 19, St. Louis County, Minnesota, ABUTTING UPON CITY LIMITS.

WHEREAS, a certain petition dated September 7, 1999, requesting annexation of the territory hereinafter described was duly presented to the council on the 7th day of September, 1999, and

WHEREAS, the petition was signed by the owner, and

WHEREAS, no objection to the annexation have been received from the Meadowlands Township Board, whose boundaries abut upon the boundaries of the land to be annexed, and

WHEREAS, a hearing was duly held by the Meadowlands City Council on the proposed annexation on December 6, 1999, after at least 30 days' mailed notice, and

WHEREAS, the land described in the petition abuts upon the city limits,

The Council of the City of Meadowlands, Minnesota ordains:

Section 1. The City Council hereby determines that the territory described herein abuts upon the city limits and is urban or suburban in character; and that none of the territory is now included within the limits of any city.

Section 2. The population of the territory is 2.

Section 3. The corporate limits of the City is hereby extended to include the platted land described as follows, and the same is hereby annexed to and included within the city as effectually as if it had originally been a part thereof, E 220 ft. of N 278 ft. of NW Quarter of NE Quarter, Section 22, Township 53, Range 19, St. Louis County, Minnesota.

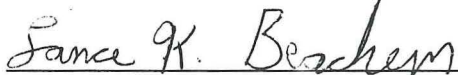
Section 4. The City Clerk is hereby directed to file certified copies of this Ordinance with the Minnesota Municipal Board, the Secretary of State, the Meadowlands Township Clerk, and the St. Louis County Auditor.

Section 5. This Ordinance takes effect upon its passage and publication and the filing of certified copies as directed in Section 3, and upon approval of the ordinance by the Minnesota Municipal Board.

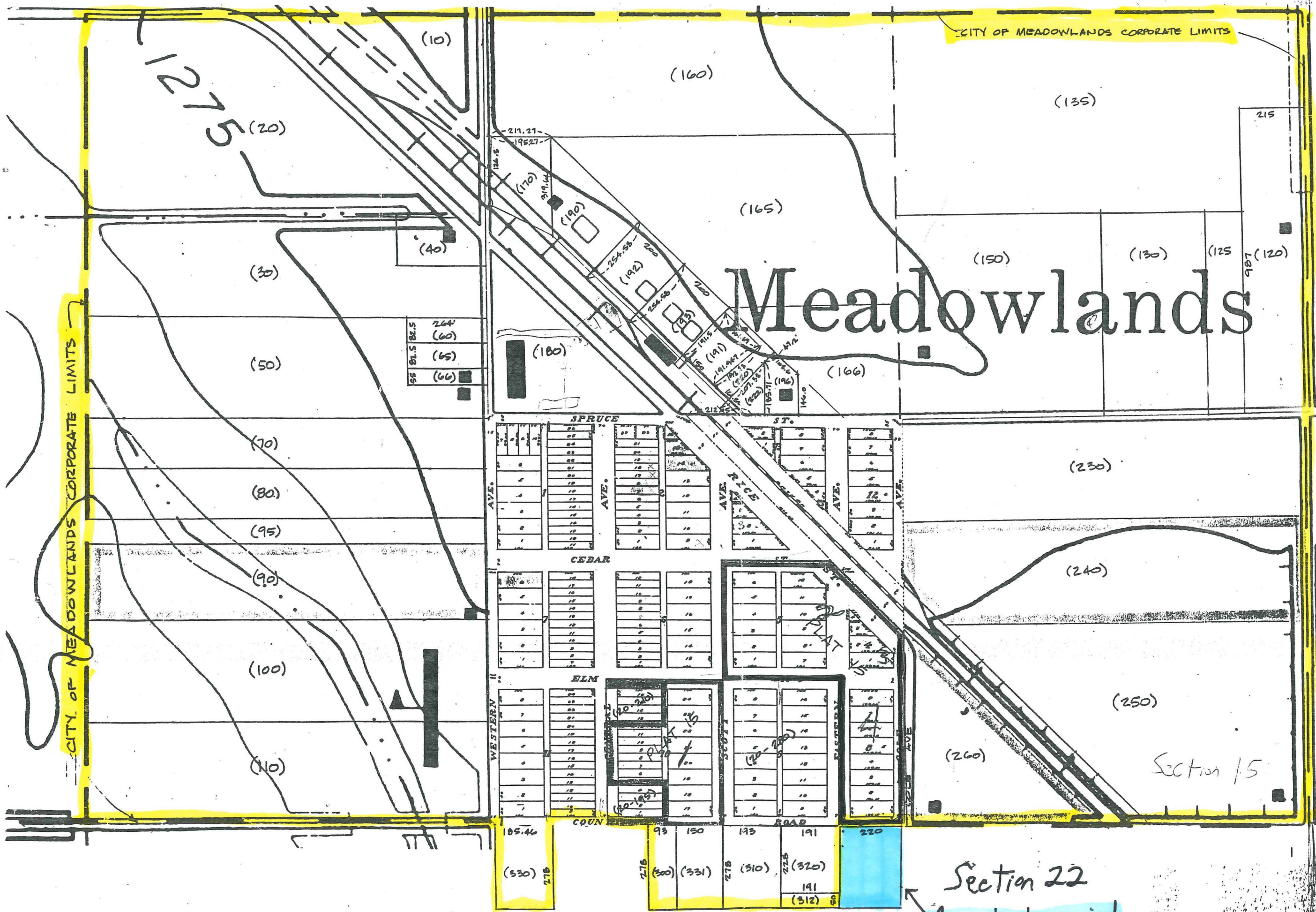
Adopted by the Meadowlands City Council this 7th day of February, 2000



Mayor



Attest: Clerk



Township
53
Range
19
←Section 15

REC'D BY
MMB FEB 14 2000

Section 22
Area to be annexed

Section 14
Section 23