

Council Member Leora Hogan introduced the following ordinance and moved for its adoption:

ORDINANCE NO. 11.09

AN ORDINANCE EXTENDING THE CORPORATE LIMITS OF THE CITY OF KILKENNY, LE SUEUR COUNTY, MINNESOTA, TO INCLUDE CERTAIN LAND OWNED BY JOAN T. CULHANE AND ABUTTING THE CITY OF KILKENNY, LE SUEUR COUNTY, MINNESOTA, A MINNESOTA MUNICIPAL CORPORATION.

WHEREAS, Joan T. Culhane, a single person, has filed a petition dated September 28, 1999, requesting that certain land as legally described below:

Commencing at a point 3.65 chains South of the Northwest Corner of the Northeast Quarter (NE ¼) of Section Twenty-seven (27), Township One Hundred Ten (110), Range Twenty-three (23), thence South 1.82 chains, thence East 5.48 chains, thence North 1.82 chains and thence West 5.48 chains to the place of beginning, according to the maps or plats on file and of record in the office of the County Recorder in and for Le Sueur County, Minnesota

to be annexed to the City of Kilkenney, Le Sueur County, a Minnesota municipal corporation (hereinafter City of Kilkenney); and

WHEREAS, Joan T. Culhane, a single person, represents that she is the sole owner of the property, that the property is unincorporated, abuts the limits of the City of Kilkenney, is not included within any other municipality, and is not included in any area that has already been designated for orderly annexation pursuant to Minnesota Statutes Section 414.0325, will use this site for residential purposes, will need city services, and is approximately 1 acres in size; and

WHEREAS, such described land is now or about to become urban or suburban in character and that the same is residential property and in need of municipal sewer and water services; and

WHEREAS, a public hearing regarding the matter was held on December 13, 1999, at 7:15 p.m. in the Kilkenney City Hall per Minnesota Statutes Section 414.033, Subdivision 2(2b).

NOW, THEREFORE, the City Council of the City of Kilkenney, Minnesota, does hereby ordain:

REC'D. BY JAN 04 2000
M M B

Section 1: The City Council determines and finds that the property abuts the municipality, that the area to be annexed is 60 acres or less, that the property is not included in any area that has already been designated for orderly annexation pursuant to Minnesota Statutes Section 414.0325, that the municipality has received a properly prepared petition for annexation from the owner of the property, and that the petition complies with all provisions of Minnesota Statutes Section 414.033.

Section 2: The property is urban in nature or about to become so and will be used by Joan T. Culhane, a single person, for residential purposes, and will need city services.

Section 3: The corporate limits of the City of Kilkenny are hereby extended to include the property and the same is hereby annexed to and included within the City of Kilkenny as if the property had originally been part thereof.

Section 4: The City Clerk is directed to file certified copies of this ordinance with the Minnesota Municipal Board, Kilkenny Township, the Le Sueur County Auditor, the Le Sueur County Recorder, and the Minnesota Secretary of State.

Section 5: This ordinance takes effect upon its passage and publication and the filing of the certified copies as directed in Section 4 and upon approval of the ordinance by the Minnesota Municipal Board.

Adopted this 13th day of December, 1999.

Clarence Miller
Mayor-Clarence Miller

ATTEST:

Leora M. Zelmer
City Clerk-Leora M. Zelmer

Council Member Mary Hagerty seconded the foregoing ordinance and the following voted in favor thereof: Mark Pittman, Mary Hagerty, Leora Hogan, Clarence Miller; William Carlson was absent.
and the following voted against same: None

whereby the ordinance was declared duly passed and ordained.

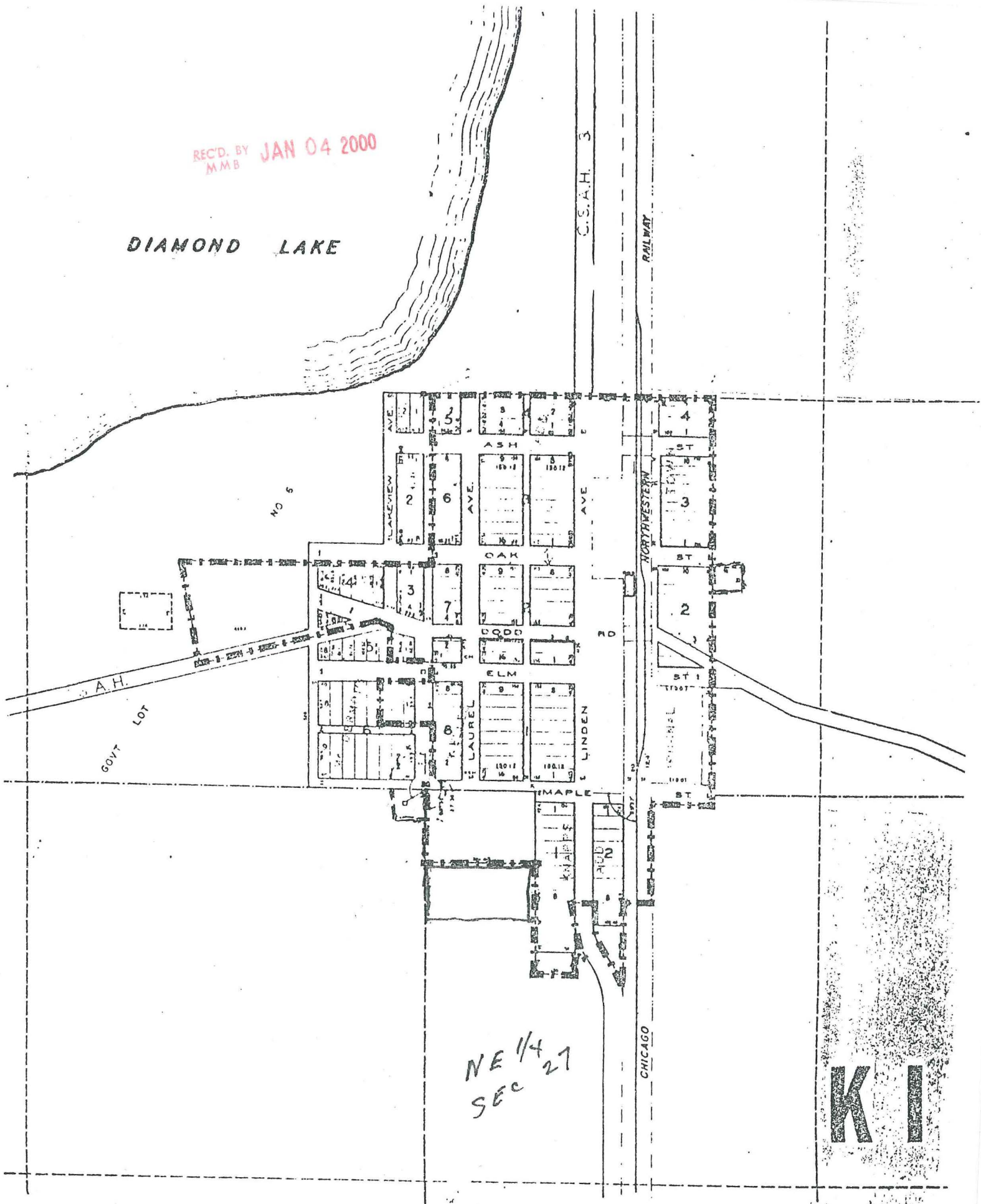
REC'D. BY JAN 04 2000
MMB

This is a true and correct copy of City of Kilkenny Ordinance No. 11.09 as attested to by
City Clerk Leora M. Zelmer.

Leora M. Zelmer
Leora M. Zelmer

REC'D. BY
MMB JAN 04 2000

DIAMOND LAKE



NE 1/4
SEC 27

K I