

REC'D. BY
M.A.M.B. OCT 12 1999

RESOLUTION NO. 99-1002

RESOLUTION OF THE CITY OF MORA PETITIONING THE
MINNESOTA PLANNING OFFICE OF STRATEGIC AND
LONG-RANGE PLANNING FOR ANNEXATION OF CERTAIN
PORTIONS OF ARTHUR TOWNSHIP TO THE CITY OF MORA
PURSUANT TO MINNESOTA STATUTES, SECTION 414.031

WHEREAS, the City of Mora, Kanabec County, Minnesota, abuts and is surrounded by Arthur Township, Kanabec County, Minnesota; and

WHEREAS, certain portions of Arthur Township currently have failed or failing on-site individual septic systems from urban residential and commercial development located within Arthur Township in close proximity to and abutting the southerly boundary of the City of Mora along Highway 65; and

WHEREAS, Arthur Township has approached the Minnesota Pollution Control Agency (MPCA) seeking a permit for a separate wastewater treatment facility to stop its current pollution problems even though connection to the City of Mora's municipal sanitary sewer treatment system is in close proximity and readily accessible to serve the proposed sewer service area located in Arthur Township; and

WHEREAS, Arthur Township's proposed wastewater treatment facility is not a long-term, cost-effective, or environmentally preferable wastewater treatment solution in comparison to annexation and connection to the City's sanitary sewer system; and

WHEREAS, the City of Mora seeks to avoid future costly environmental problems caused by urban or suburban development in Arthur Township and potential failure of the Township's proposed treatment system by providing a long-term, environmentally sound and cost-effective solution for providing municipal sanitary sewer service and other needed governmental services to Arthur Township; and

WHEREAS, the City of Mora seeks to provide regional sewer treatment service to Township areas in need of such services through its existing infrastructure in order to use the substantial public investment made in planning and over-sizing the City's existing collection system and municipal wastewater treatment plant which have been sized to accommodate and serve future growth in the region; and

WHEREAS, it is the policy of the City of Mora that where municipal sanitary sewer service is proposed to be extended to an unincorporated area, annexation is a condition precedent so that those needing municipal services share equally as current City residents in the expense associated with providing municipal services; and

WHEREAS, the area of Arthur Township proposed to be annexed and served is urban or suburban in character or about to become so based on residential and commercial development which has occurred and will occur in the area proposed to be annexed and based on the need for

municipal sewer service to address pollution issues from failing individual septic systems associated with such development; and

WHEREAS, Arthur Township, based on urban and suburban development along Highway 65 is in need of municipal services from the City of Mora; and

WHEREAS, extension of municipal sanitary sewer service, water service and other municipal services from the City of Mora is necessary for the public, health, safety, and welfare of the residents of Arthur Township and the City of Mora; and

WHEREAS, extension of municipal sanitary sewer service, water service and other municipal services from the City of Mora is in the best interests of the City of Mora, Arthur Township, and the property owners in the area proposed for annexation; and

WHEREAS, the City of Mora has attempted to resolve the Township's pollution problems, sewer service needs, and annexation issues by suggesting cooperative discussions regarding development of an orderly annexation agreement which would provide for planned growth, planned services, and planned annexation, but such suggestions have been met with steadfast opposition and without commitment, and the Township has instead chosen to act unilaterally against the best interests of the community to seek a permit to build a duplicative treatment facility on the City's boundary leaving the City no choice but to file this resolution seeking annexation; and

WHEREAS, it is the intent and desire of the City of Mora to initiate proceedings for the annexation of the area of Arthur Township needing and which will need municipal sanitary sewer service, water service and other municipal services by filing this Resolution with the Minnesota Planning Office of Strategic and Long-Range Planning, Municipal Boundary Adjustments Office, requesting annexation to the City of Mora; and

WHEREAS, the City Council of the City of Mora fully supports the filing of this Resolution with the above-mentioned state agency for a hearing regarding the annexation of the area of Arthur Township described herein to the City of Mora.

NOW, THEREFORE, BE IT RESOLVED BY THE CITY OF COUNCIL OF THE CITY OF MORA, KANABEC COUNTY, MINNESOTA, THAT;

1. The Minnesota Planning Office of Strategic and Long-Range Planning, Municipal Boundary Adjustments Office, is hereby requested to hold a hearing pursuant to Minnesota Statutes, section 414.09, on the question of annexation of certain portions of Arthur Township, Kanabec County, Minnesota, described herein, to the City of Mora, Kanabec County, Minnesota, pursuant to Minnesota Statutes, section 414.031, subd. 1(a).
2. The area of Arthur Township proposed for annexation to the City of Mora is legally described as follows:


All of that part of Section 23 in Township 39 North, Range 24 West of the Fifth Principal Meridian, in Kanabec County, Minnesota, lying southerly of the existing City of Mora corporate limits line.

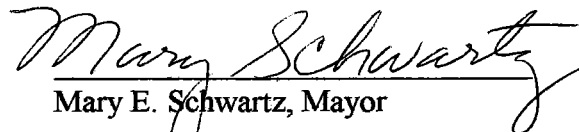
3. The area of Arthur Township proposed for annexation described above is unincorporated and abuts the City of Mora on the City's southerly boundary and none of the above-described area of Arthur Township is presently a part of any incorporated city or an area designated for orderly annexation.
4. The total acreage of the area of Arthur Township proposed for annexation described above is 640 acres.
5. The population of the City of Mora is 3,105, and the population of Arthur Township is 1,735.
6. The following parties are entitled to notice pursuant to Minnesota Statutes, section 414.09;
 - a. Arthur Township, as the township presently governing the area to be annexed and served.
 - b. Kanabec County, as the county in which the area to be annexed and served is located.
 - c. The Kanabec County Planning Commission and Arthur Township Planning Commission, as planning agencies with jurisdiction over the affected area.
7. City staff are hereby directed to file this Resolution with the Minnesota Planning Office of Strategic and Long-Range Planning, Municipal Boundary Adjustments Office, for annexation of certain portions of Arthur Township described above pursuant to Minnesota Statutes, section 414.031, subd. 1(a).

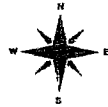
Adopted by the City Council of the City of Mora, this 11th day of October, 1999.

Attest:

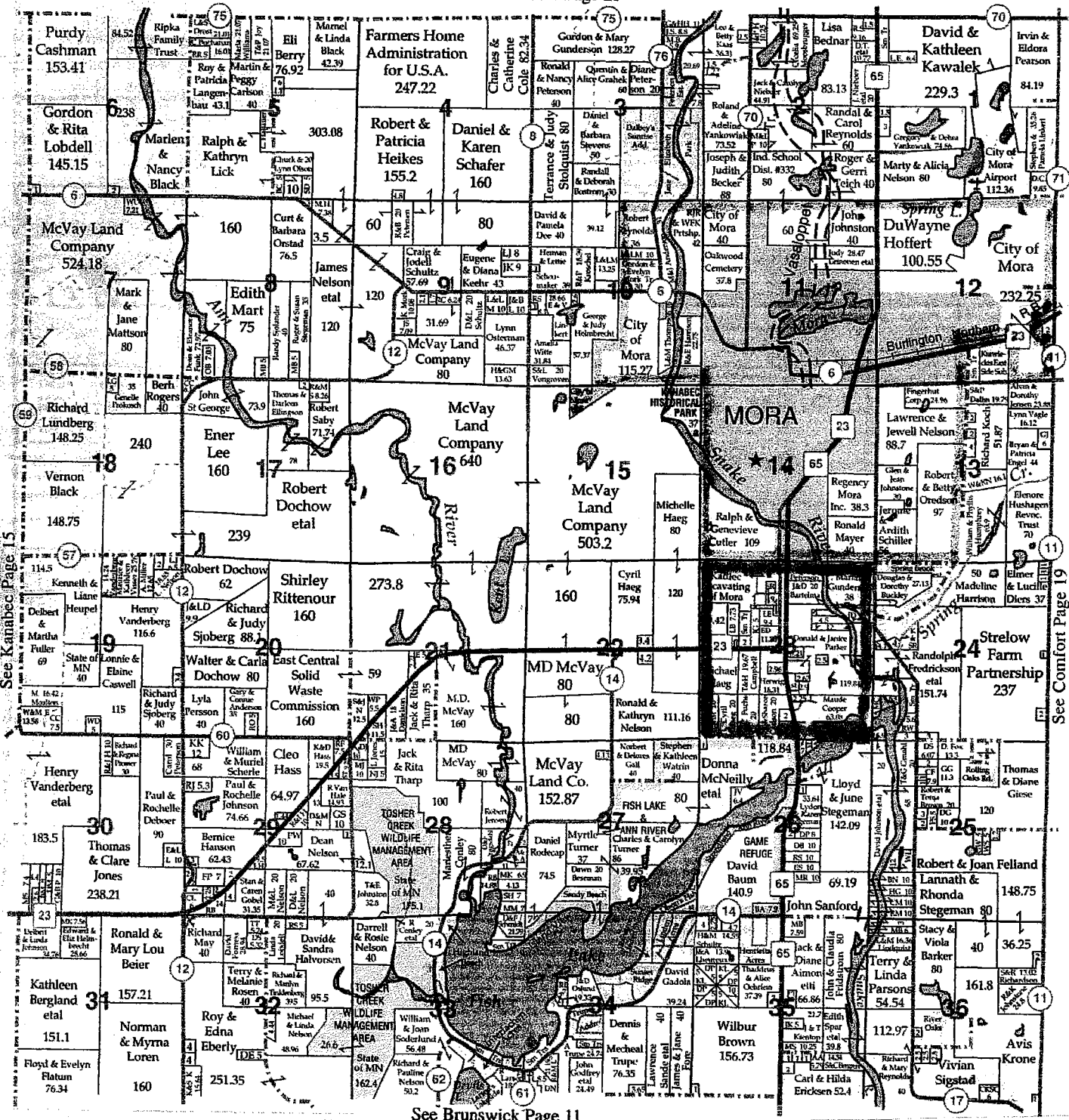
Approved:


Dorothea McCallum, City Clerk


Mary E. Schwartz, Mayor



See Knife Lake Page 23



See Kanabec Page 15

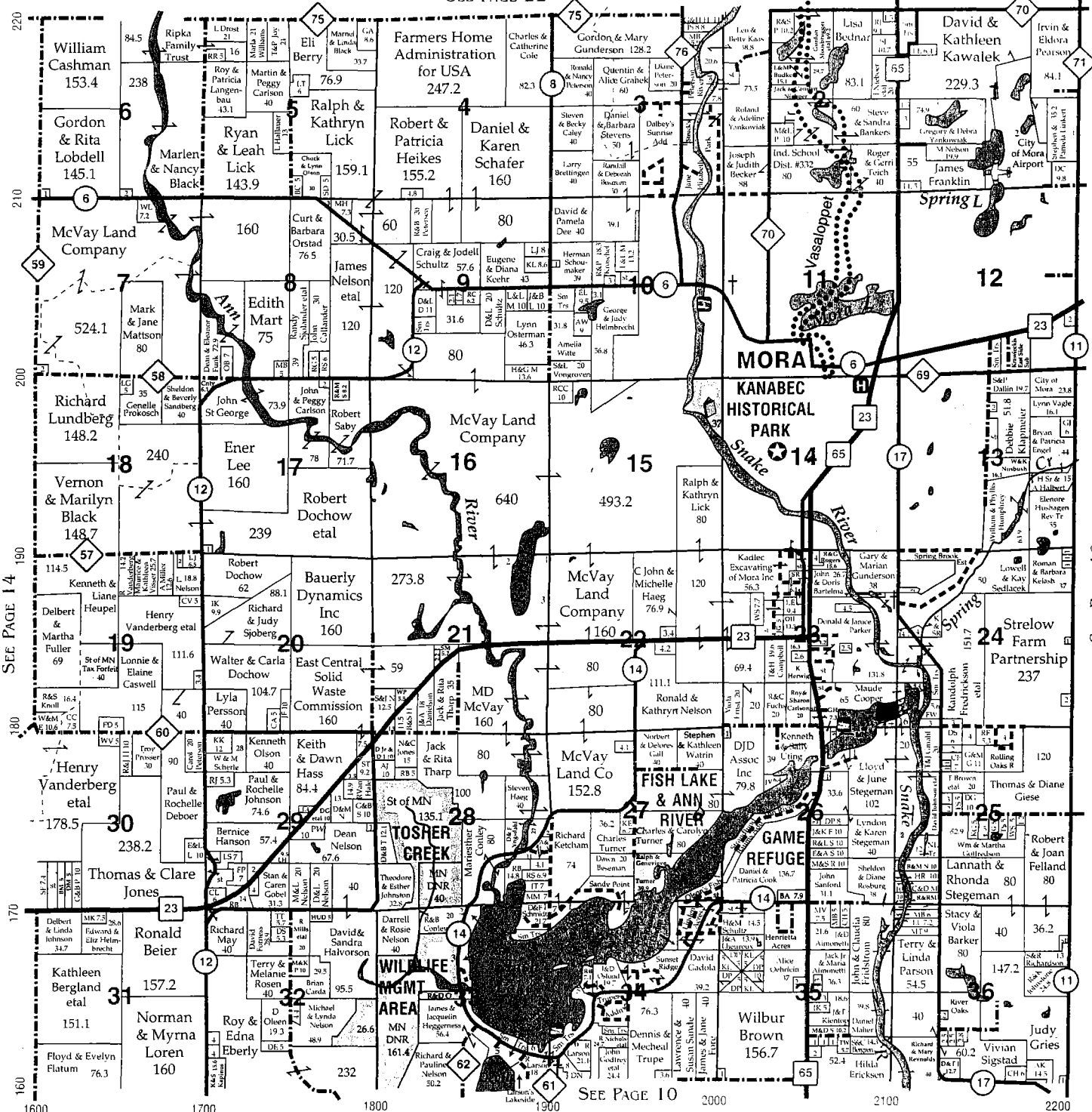
See Comfort Page 19

See Brunswick Page 11

-  Corporate Limits of the City of Mora
-  Annexation Area



SEE PAGE 22



SEE PAGE 14

SEE PAGE 18

SEE PAGE 10

SOLD

COLDWELL BANKER

Country Living Realty

Expect the best.™

An Independently Owned and Operated Member of Coldwell Banker Residential Affiliates, Inc.

133 S. Union Suite A • Mora, MN 55051
 1-800-698-6672 • (320) 679-5661

"Buy your next car, pickup or van from the dealer where service comes first"

GUNDERSON MOTORS

Mora Established 1980

Chevrolet • Oldsmobile • Pontiac • Buick

INSTRUCTIONS

Outline every feature of the land in this section that should be taken into consideration in determining the value of the land—such as topography, soil, roads, ditches, power lines and adaptability to use of the land.

Use the following symbols:

As to Topography

- L—Level
- R—Rolling
- H—Hilly
- St—Stony
- Sw—Swamp

As to Soil

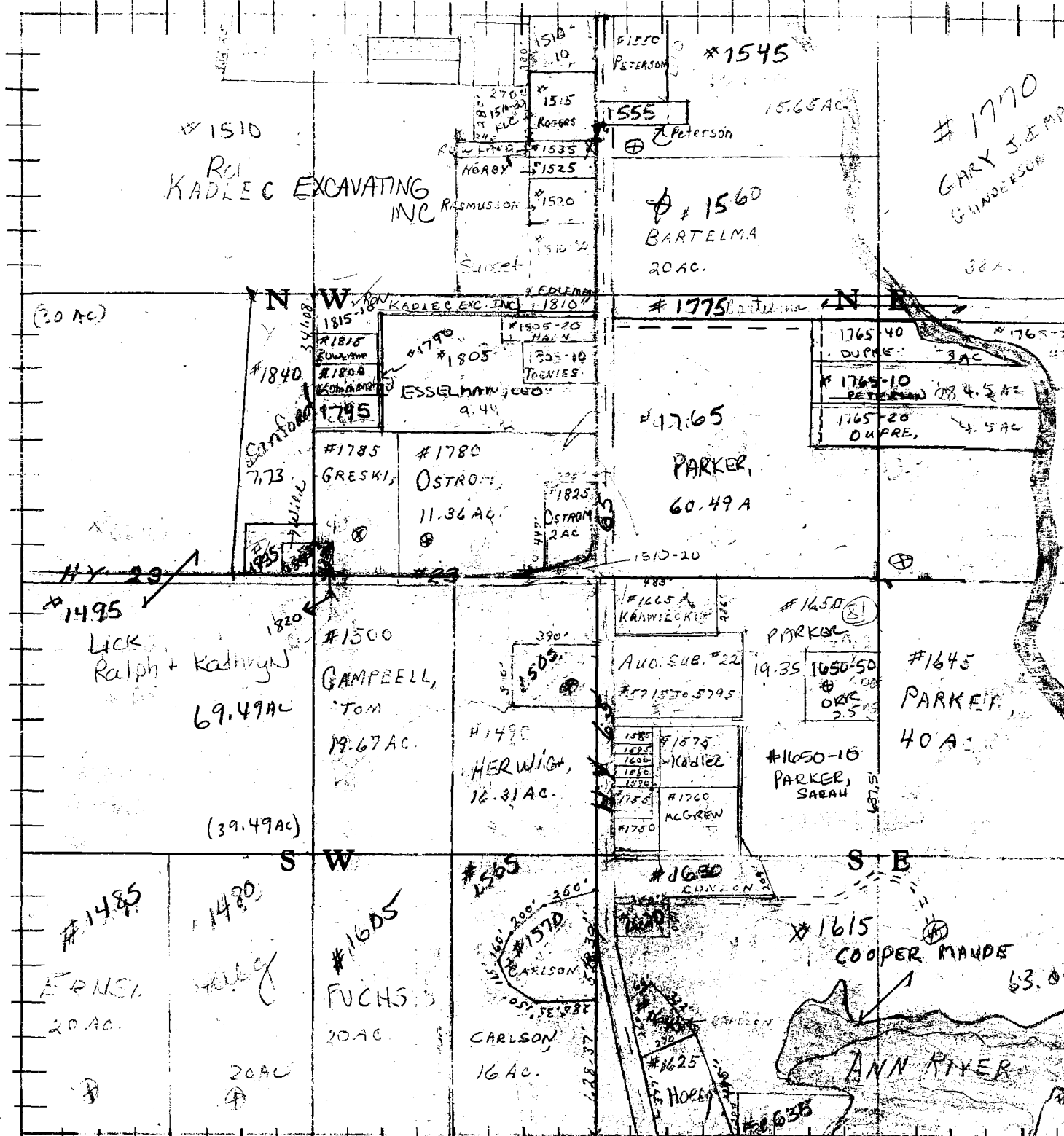
- Lo—Loam
- Cl—Clay
- Sa—Sandy

As to adaptability to use

- TA—Tillable A
- TB—Tillable B
- TC—Tillable C
- MP—Meadow and Pasture
- Tr—Timber or Trees
- CO—Cut Over
- W—Waste

Outline heavily each owner's land placing upon it in small letters the owner's name and number of acres.

Scale—1 inch=660 ft.

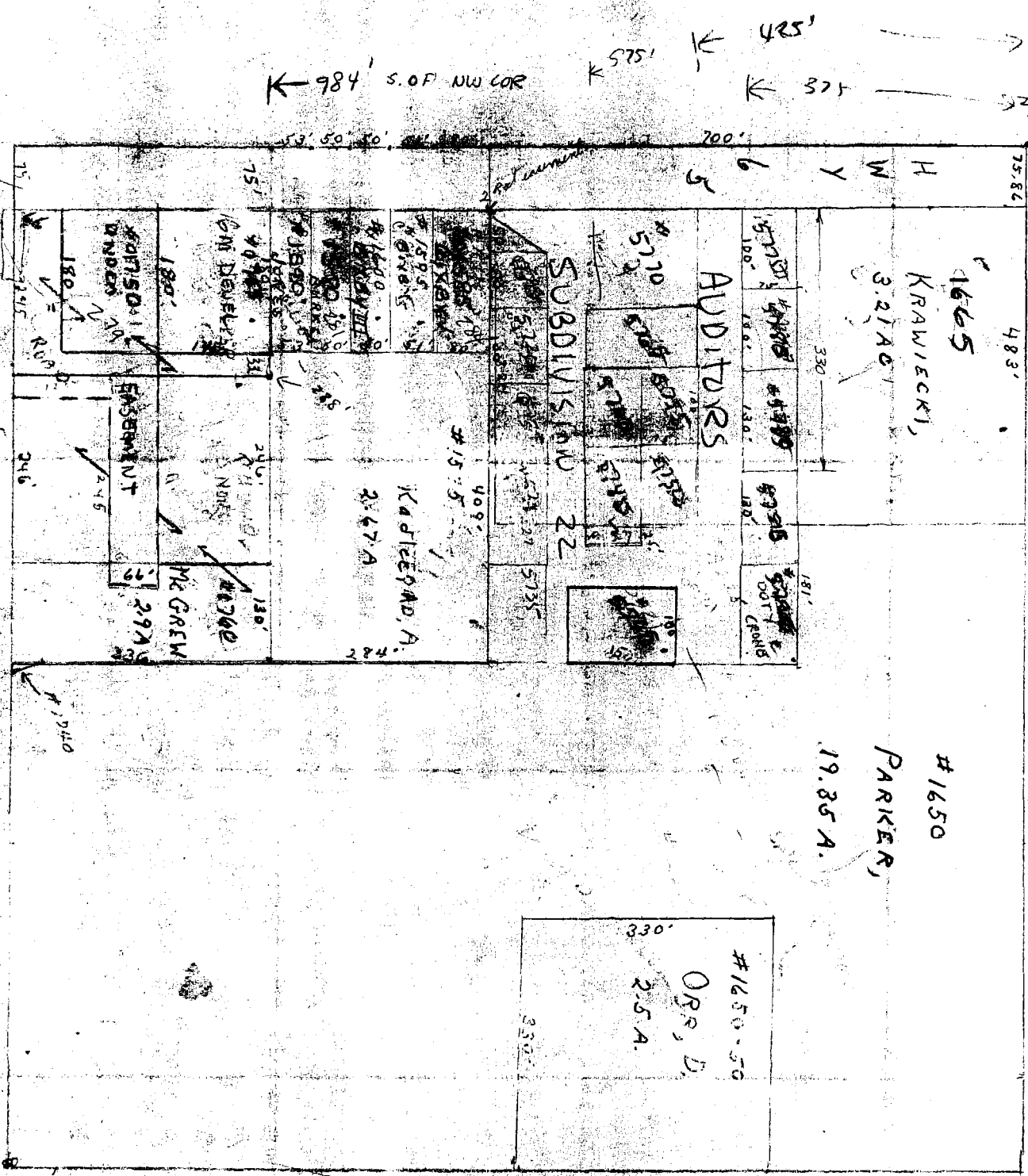


0238

NW 1/4 of SE 1/4 Sec. 23

(1" = 200')

REC'D OCT 12



984' S. OF NW COR

575'

425'

375'

NW 1/4 of SE 1/4

75.82'

483'

1665 KRAWIECKI, 3.21 A.

330'

ADDITIONS

SUBDIVISION 22

409'

RADICEK, A. 2.67 A.

1650

PARKER, 19.35 A.

1650-50

OR, B.

2.5 A.

396'

330'

330'