

ORDINANCE NO. 418

AN ORDINANCE ANNEXING CERTAIN UNINCORPORATED PROPERTY
ABUTTING THE CITY OF STAPLES
PURSUANT TO MINNESOTA STATUTES SECTION 414.033

WHEREAS, the City of Staples has studied its municipal borders and the City's growth patterns, and the City further desires to promote orderly growth and provide municipal services in an efficient manner; and

WHEREAS, the property which is the subject of this annexation abuts the municipality, and the area to be annexed is less than 60 acres, and the municipality has received a petition for annexation from all of the property owners of the land; and

WHEREAS, the City finds that the property proposed for annexation is or about to become urban or suburban in character, and the annexation by the City of Staples is required to protect the public health, safety and welfare, and the annexation is in the best interests of the property proposed for annexation; and

WHEREAS, the City held a public hearing concerning the annexation on August 24, 1999 following 30 days written notice by certified mail to the township affected by the proposed ordinance and to all landowners within and contiguous to the area being annexed, and no objections to the annexation were received by the City; and

WHEREAS, the City desires to proceed with the annexation of said property by ordinance pursuant to Minnesota Statutes Section 414.033;

NOW, THEREFORE, BE IT ORDAINED by the City Council of the City of Staples as follows:

Section 1. The corporate limits of the City are hereby amended to include the following described property currently in the jurisdiction of Staples Township in Todd County, Minnesota, which property consists of approximately .12 acres, and the property is hereby annexed to and included within the corporate limits of the City pursuant to Minnesota Statutes Section 414.033 as if such property had originally been a part of the City:

Lots 1 and 2 of Block 3, Bigelow's Addition to Staples, according to the plat thereof on file and of record in the office of the Todd County Recorder, together with all abutting streets and alleys.

Section 2. Pursuant to the City Zoning Ordinance, the City Council hereby designates the above described parcel of property being annexed herein to be residential.

Section 3. The amount required to pay the filing fee of the Minnesota Municipal Board for this annexation ordinance is hereby appropriated for such purpose, and the City Administrator is directed to make the necessary filings and provide required information to the Minnesota Municipal Board, the Township of Staples, the Auditor of Todd County, and the Minnesota Secretary of State.

Section 4. The subject property contains one household with an estimated population of two (2).

Section 5. This ordinance is effective upon passage and publication pursuant to the Staples City Charter, Minnesota Statutes, and approval by the Minnesota Municipal Board.

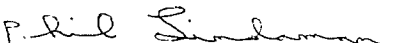
PASSED by the City Council of the City of Staples this 14th day of September, 1999.

APPROVED BY



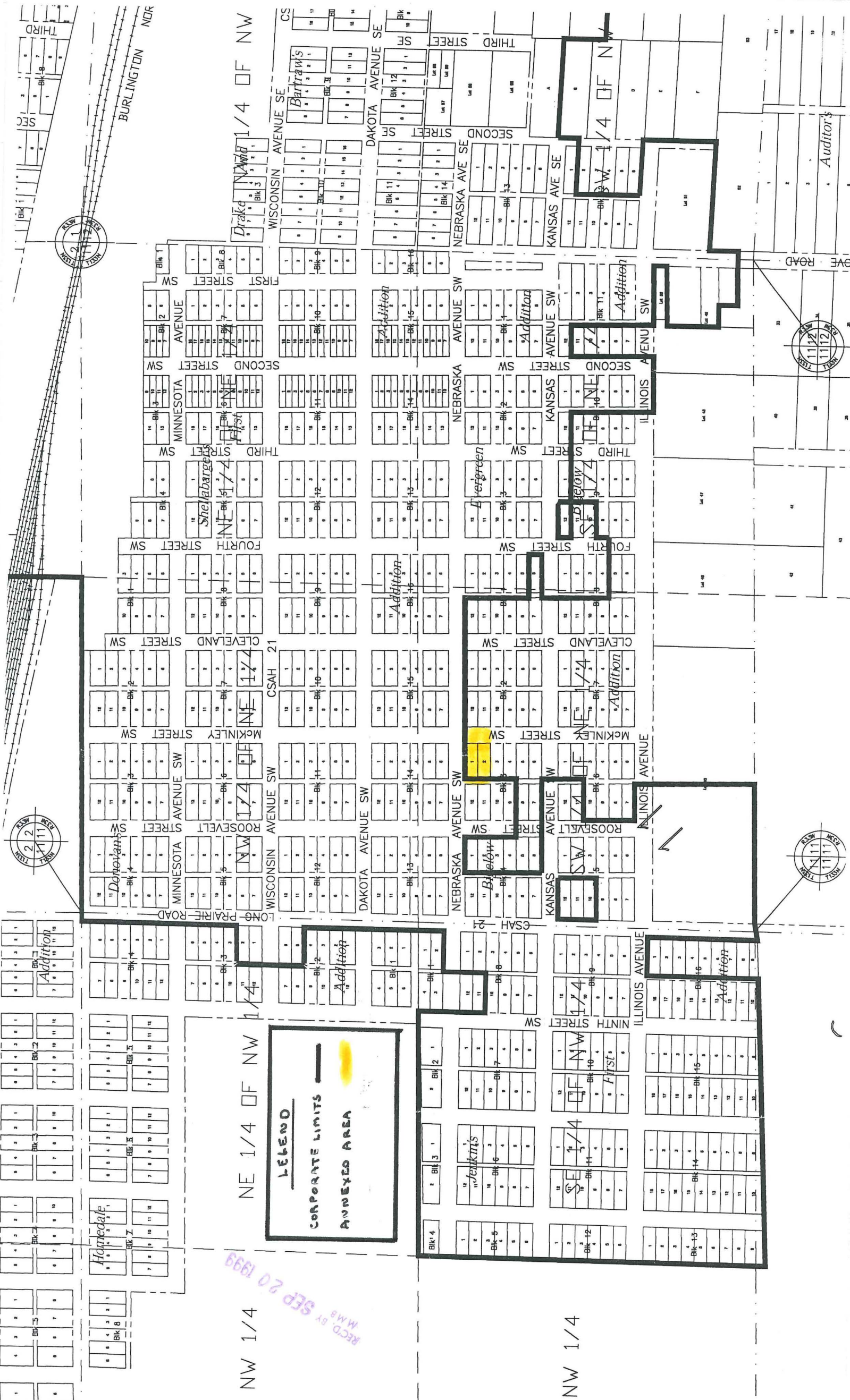
Michael W. Goff
Mayor

ATTEST



Phil Lindaman
City Clerk

First Reading: August 24, 1999
Second Reading: September 14, 1999
Adoption: September 14, 1999
Published: September 23, 1999



LEGEND

CORPORATE LIMITS

ANNEXED AREA

NW 1/4

NW 1/4

NE 1/4 OF NW

SW 1/4 OF NW

