

ORDINANCE NO. 7 2nd SERIES

**AN ORDINANCE EXTENDING THE CORPORATE LIMITS OF THE CITY OF JORDAN
TO INCLUDE CERTAIN LAND OWNED BY YAHNKE AND JANOUSEK**

WHEREAS, Steve Janousek, Mark Yahnke, Tracy Yahnke, Shaun Yahnke, Donald Yahnke and Lisa Hessing have filed a petition dated July 10, 1998, requesting the annexation to the City of Jordan of certain real estate for industrial development within the County of Scott, State of Minnesota, described as follows:

The Southeast 1/4 of the Southeast 1/4, Section 13, Township 114, Range 24, Scott
County, Minnesota

and

WHEREAS, the population of the property is six, and that the property is unincorporated, abuts on the westerly boundary of the City of Jordan, is not included in any boundary adjustment proceeding pending before the Minnesota Municipal Board, has a property area of 40 acres, is not presently served by public sewer facilities or public sewer facilities are not otherwise available, and is or is about to become urban or suburban in character.

WHEREAS, said property is currently served by Minnesota Valley Electric Cooperation and electric service utility notice has been served.

NOW, THEREFORE, THE CITY COUNCIL OF JORDAN, MINNESOTA DOES
HEREBY ORDAIN:

Section 1. The City Council hereby determines and finds that the property abuts the municipality, that the area to be annexed is sixty acres or less, that the area to be annexed is not presently served by public sewer facilities or public sewer facilities are not otherwise available, that the municipality has received a properly prepared Petition for Annexation from all of the owners of the property, that the area is appropriate for annexation under M.S. 414.033, Subd. 2, (3), and that the Petition complies with all the provisions of Minnesota Statute 414.033.

Section 2. The property is urban or suburban in nature or about to become so.

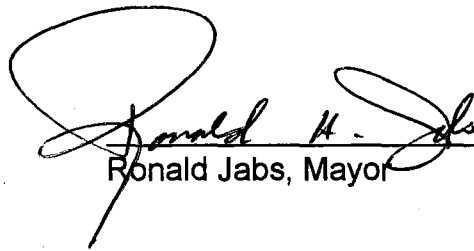
Section 3. The property is currently served by Minnesota Valley Electric Cooperation and the electric utility service notice has been given.

Section 4. Pursuant to law, a public hearing was scheduled, with proper notification given, and held on Thursday, August 27, 1998, prior to council consideration of this ordinance for annexation.

Section 5. The corporate limits of the City of Jordan are hereby extended to include property.

Section 6. The City Planner is directed to file certified copies of this ordinance with the Municipal Board, St. Lawrence Township, Scott County, and the Minnesota Secretary of State.

Section 7. The ordinance takes effect upon its passage and publication and filing of the certified copies as directed in Section 6 and approval of the ordinance by the Minnesota Municipal Board.

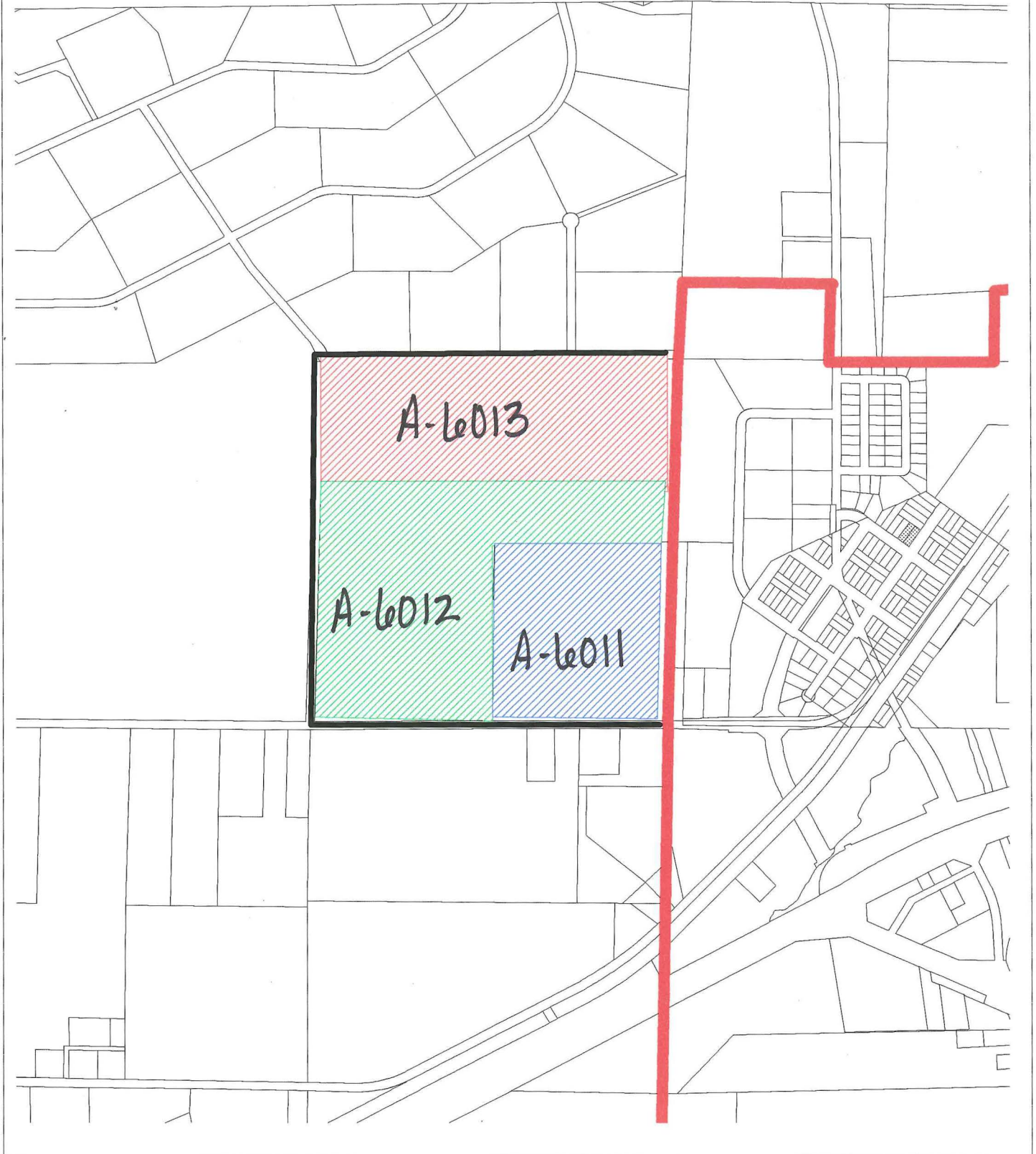







Ronald Jabs, Mayor

ATTEST:



Douglas Sell, City Administrator



-  Annexation Area
-  Yahnke 40 acres
-  Pearson 1st 60 acres
-  Pearson 2nd 60 acres
-  Current City Limit