

ORDINANCE NO. 49, Second Series

AN ORDINANCE EXTENDING THE CORPORATE LIMITS OF THE CITY OF SLEEPY EYE TO INCLUDE CERTAIN PLATTED LAND ABUTTING UPON THE CITY LIMITS.

WHEREAS, a petition dated May 26, 1998, requesting annexation of the territory hereinafter described as duly presented to the Council, and

WHEREAS, the quantity of land embraced within the area described in the petition is approximately 3.7 acres, more or less, no part of which is included within the limits of an incorporated city; and

WHEREAS, the petition was signed, by a majority of the property owners in number, for the lots to be annexed; and

WHEREAS, the land described in the petition abuts upon the city limits on three sides and is urban or suburban in character.

NOW, THEREFORE, the City of Sleepy Eye does ordain as follows:

SECTION ONE. The City Council hereby determines that the annexation will be to the best interest of the City and of the territory affected, that the territory described herein abuts upon the city limits and is urban or suburban in character, and that none of said territory is now included within the limits of any city and does not abut upon the limits of any other city.

SECTION TWO. The corporate limits of the City are hereby extended to include the platted land described as follows, and the same is hereby annexed to and included within the City as effectually as if it had originally been a part hereof:

Lots A, H, I, N, J, K and L, all in the SE $\frac{1}{4}$, Sec. 29, Twp. 110N, Range 32 West, and Lot M-6, EXCEPTING the East 434.3 ft. thereof of the SE $\frac{1}{4}$, Sec. 29, Twp. 110N, Range 32 West, Brown County, Minnesota.

SECTION THREE. The City Clerk has hereby directed to file certified copies of this Ordinance with the Minnesota Municipal Commission, Secretary of State, the Home Township Clerk and the County Auditor.

REC'D. BY
MMB AUG 06 1998

SECTION FOUR. This Ordinance takes effect upon its passage and publication and the filing of the certified copies as directed in Section Three and approval of the Minnesota Municipal Commission.

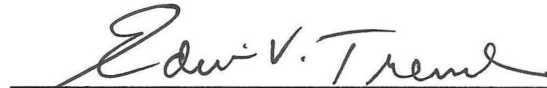
Passed by the City Council for the City of Sleepy Eye, Minnesota, on August 04, 1998.



James J. Broich, Mayor

I hereby certify and attest that the City Council of the City of Sleepy Eye, Minnesota, did pass the above Ordinance on August 04, 1998, in accordance with the Charter Provisions and state laws provided therefor.

Dated: August 05, 1998.



Edwin V. Treml, City Clerk

Published in the Sleepy Eye Herald Dispatch, Sleepy Eye, Minnesota, on August 13, 1998.

SCHEDULE "B"

REC'D. BY JUN 11 1998
MMB

150.029.004.15.150

LOT M-3 OF M-2

LOT M-4A-1 OF LOT M-2

LOT M-4A-2 OF LOT M-2

ST NE

SEVENTH AVENUE

SLEEPY EYE BUS LINES

LEWIS & LINDA ABEL
020 A

LEWIS ABEL & LINDA MERKEL
50 170 H

LINUS & MONICA WEISS
50 180 I

LINUS & MONICA WEISS
280 N

JOHN & CECILIA MCWHORTER
50 270 N

MASEDONIO & JULIA CAMPOS JR
50 290 N

ELLEN CALDWELL
150 200 J

ORLENE HORMAN
190 210 J
ORLENE HORMAN K

GERALD AUGUSTIN
220 K

LISA L REGAN
230 L

002.960.C

LOT M-6

MAIN ST EAST

150.032.004.02.170

LOT K-1
150.032.001.01.050

2ND SUBDIVISION

S.T.H. No. 4

TOWNSHIP ROAD NO. 125

PLAT
OF THE
CITY OF SLEEPY EYE
BROWN COUNTY MINNESOTA

REC'D BY
AUG 06 1998

1" = 1000'

- VACATED STREET

LAND ACREAGE = 1040

WATER ACREAGE = 188

NOVEMBER 1997

CORPORATE CITY LIMITS

AVE. N.W.

EIGHTH

PRESCOTT ST.

U.S. HWY. No. 14

BROWN'S ADDITION

WALNUT ST.

MAPLE ST.

WATER ST.

SEVENTH

FIFTH

S.W.

S.W.

S.W.

S.W.

S.W.

S.W.

S.W.

S.W.

S.W.

S.W.

S.W.

S.W.

S.W.

S.W.

S.W.

S.W.

S.W.

SLEEPY EYE
ATHLETIC FIELD

NOTE: ALL ALIEN AND TRUSTY DEEDS IN RECORD

S.T.H. No. 4

ELLSWORTH ST.

S.W.

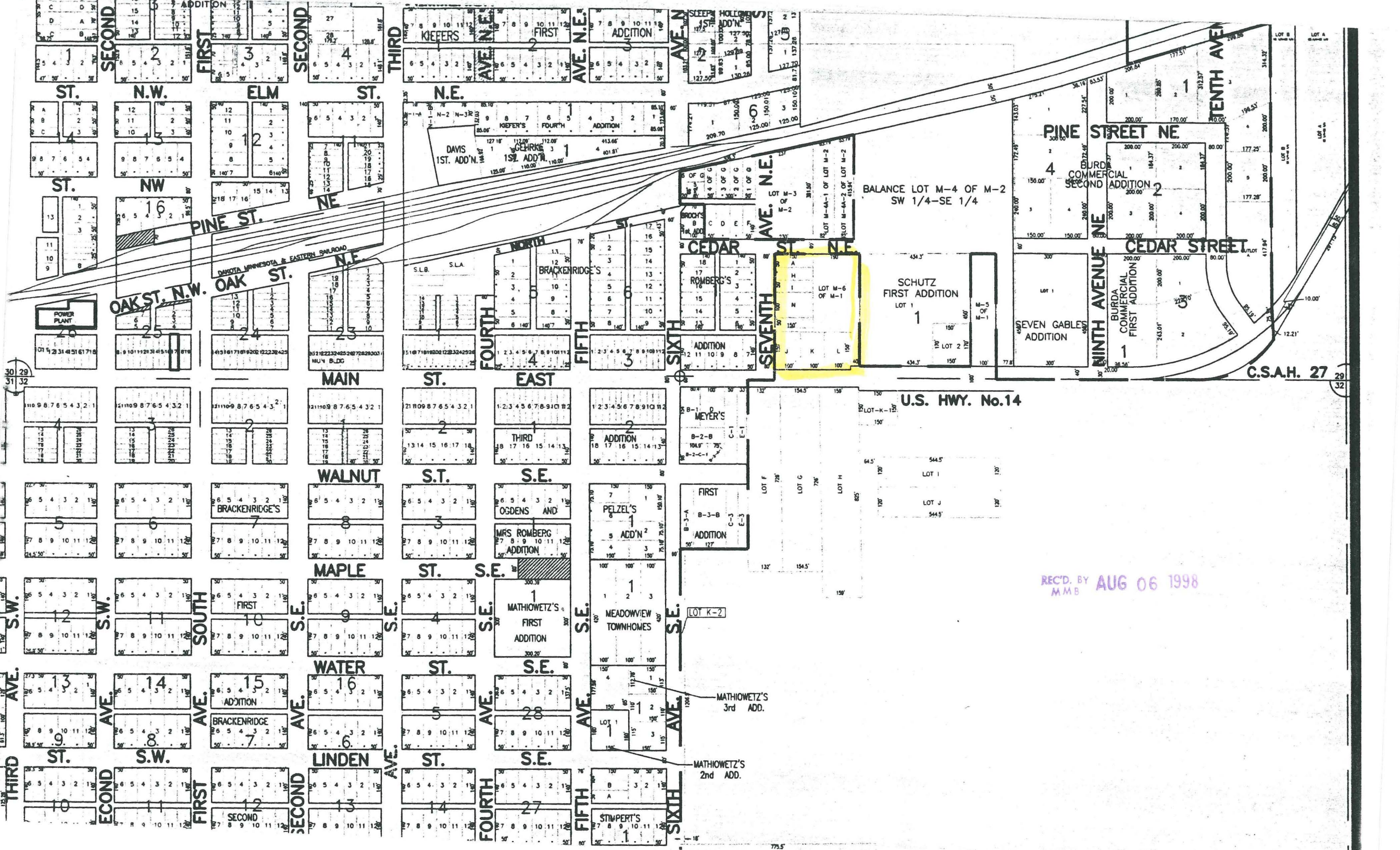
S.W.

CORPORATE CITY LIMITS

**BOLTON & MENK, INC**

CONSULTING ENGINEERS & SURVEYORS

MINNEAPOLIS, MN FAIRBANKS, MN SLEEPY EYE, MN
DURHAMVILLE, MN WILLMAR, MN AMES, IA LIBERTY, MO



REC'D. BY
MMB AUG 06 1998