

**PETITION FOR ANNEXATION**

IN THE MATTER OF THE PETITION FOR ANNEXATION OF  
UNINCORPORATED ADJOINING PROPERTY LOCATED ALONG COUNTY STATE  
AID HIGHWAY 44, ALEXANDRIA, MINNESOTA

**TO THE CITY OF ALEXANDRIA AND THE MINNESOTA MUNICIPAL  
BOARD:**

WE, THE UNDERSIGNED, the owners of the property described below, hereby  
petition the Alexandria City Council to annex this territory to the City of Alexandria,  
Minnesota and for that purpose respectfully state:

1. The petitioners are the owners of the subject property.
2. Pursuant to Minnesota Statutes Section 414.033, Subdivision 5, the petition is  
signed by a majority of the property owners within the affected area.
3. The property currently abuts upon the northern boundary of the Alexandria  
City limits, along the westerly and southerly boundaries of the subject  
property and is not presently a part of any incorporated city.
4. This property consists of platted and unplatted land in La Grande Township,  
Douglas county, containing approximately 8.56 acres in 12 parcels owned by  
14 property owners which is described as:

X Unplatted .59 acres of E2SE4 (part of vacated subs 15-30 Whitcombs Sub)  
lying E and S'ly of cul de sac for Karnis Drive and SW'ly of that part of  
Lot 7, Block 1, Ridgewood South in La Grande Township. (PIN 27-0466-  
050).

And

Lots 1 through 7, Block One, Lots 1 and 2, Block Two and Lots 1 and 2,  
Block Three, Ridgewood South.

5. The Petitioners state that this land has become suburban in character by  
usage.
6. The parties affected and which may be entitled to notice are the Township of  
La Grande and Douglas County.
7. The reason for requesting annexation is for the affected properties to be served  
with municipal services including municipal water.

Pursuant to Minnesota Statutes Section 414.033, Subdivision 13, the City of Alexandria  
notifies the petitioners that the cost for electric utility service is currently and will

continue to be served by Alexandria Light and Power even if the territory is annexed to the City of Alexandria.

Dated at Alexandria, Minnesota this \_\_\_\_\_ day of \_\_\_\_\_, 1998.

Received by the City of Alexandria this \_\_\_\_\_ day of \_\_\_\_\_, 1998.

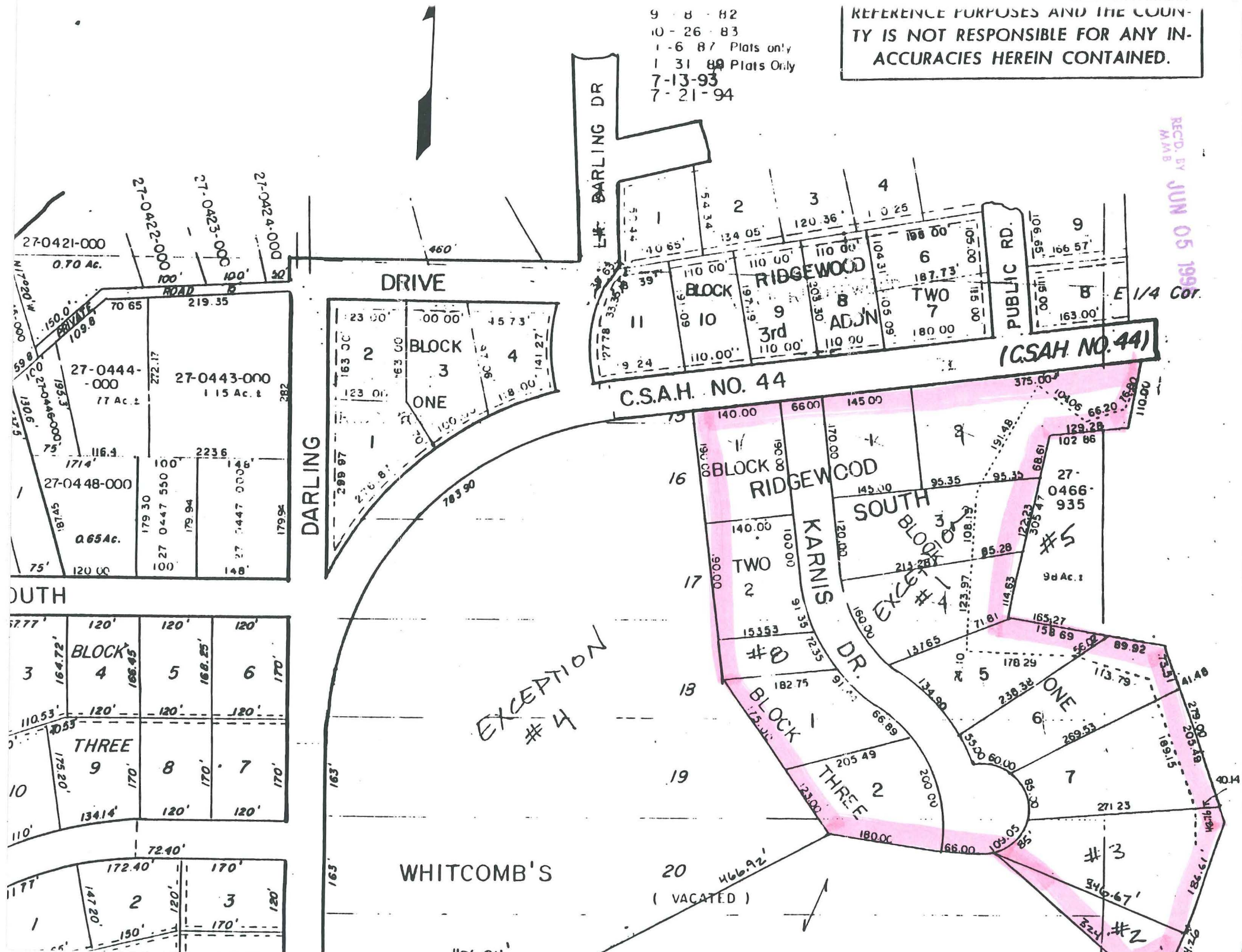
<u>PROPERTY OWNER</u>	<u>PIN</u>	<u>SIGNATURE</u>	<u>DATE</u>
John E. Seltz	27-0466-050	<i>John E. Seltz</i>	4-8-98
Susan R. Seltz	27-0466-050	<i>Susan R. Seltz</i>	4-8-98
Eugene K. Karnis	27-0466-200	<i>Eugene K. Karnis</i>	6-1-98
Twyla Mae Karnis	27-0466-200	<i>Twyla M. Karnis</i>	6-1-98
Eugene K. Karnis	27-0466-210	<i>Eugene K. Karnis</i>	6-1-98
Twyla Mae Karnis	27-0466-210	<i>Twyla M. Karnis</i>	6-1-98
Jeffrey L. Bigger	27-0466-220	<i>Jeffrey L. Bigger</i>	
Julie M. Bigger	27-0466-220	<i>Julie M. Bigger</i>	
Eugene K. Karnis	27-0466-230	<i>Eugene K. Karnis</i>	6-1-98
Twyla Mae Karnis	27-0466-230	<i>Twyla M. Karnis</i>	6-1-98
Eugene K. Karnis	27-0466-240	<i>Eugene K. Karnis</i>	6-1-98
Twyla Mae Karnis	27-0466-240	<i>Twyla M. Karnis</i>	6-1-98
Paul W. Johnson	27-0466-250	<i>Paul W. Johnson</i>	4/15/98
Beth R. Johnson	27-0466-250	<i>Beth R. Johnson</i>	4/15/98
Kevin M. Raske	27-0466-260	<i>Kevin M. Raske</i>	4-13-98
Marilyn A. Raske	27-0466-260	<i>Marilyn A. Raske</i>	4-13-98
Eugene K. Karnis	27-0466-270	<i>Eugene K. Karnis</i>	6-1-98
Twyla Mae Karnis	27-0466-270	<i>Twyla M. Karnis</i>	6-1-98
Brian L. Gilmore	27-0466-280	<i>Brian L. Gilmore</i>	
Cynthia K. Gilmore	27-0466-280	<i>Cynthia K. Gilmore</i>	
Eugene K. Karnis	27-0466-290	<i>Eugene K. Karnis</i>	6-1-98
Twyla Mae Karnis	27-0466-290	<i>Twyla M. Karnis</i>	6-1-98
David S. Kludt	27-0466-300	<i>David S. Kludt</i>	4-27-98
Vicki L. Kludt	27-0466-300	<i>Vicki L. Kludt</i>	4-27-98



REFERENCE PURPOSES AND THE COUNTY IS NOT RESPONSIBLE FOR ANY INACCURACIES HEREIN CONTAINED.

9-8-82  
10-26-83  
1-6-87 Plats Only  
1-31-89 Plats Only  
7-13-93  
7-21-94

REC'D. BY  
MAMB  
JUN 05 1999



27-0421-000  
0.70 Ac.  
27-0422-000  
27-0423-000  
27-0424-000  
27-0444-000  
77 Ac.  
27-0443-000  
1.15 Ac.  
27-0448-000  
0.65 Ac.  
27-0446-000  
27-0447-000  
27-0448-000

BLOCK 3  
BLOCK 4  
BLOCK 5  
BLOCK 6  
BLOCK 7  
BLOCK 8  
BLOCK 9  
BLOCK 10  
BLOCK 11  
BLOCK 12  
BLOCK 13  
BLOCK 14  
BLOCK 15  
BLOCK 16  
BLOCK 17  
BLOCK 18  
BLOCK 19  
BLOCK 20  
BLOCK 21  
BLOCK 22  
BLOCK 23  
BLOCK 24  
BLOCK 25  
BLOCK 26  
BLOCK 27  
BLOCK 28  
BLOCK 29  
BLOCK 30  
BLOCK 31  
BLOCK 32  
BLOCK 33  
BLOCK 34  
BLOCK 35  
BLOCK 36  
BLOCK 37  
BLOCK 38  
BLOCK 39  
BLOCK 40  
BLOCK 41  
BLOCK 42  
BLOCK 43  
BLOCK 44  
BLOCK 45  
BLOCK 46  
BLOCK 47  
BLOCK 48  
BLOCK 49  
BLOCK 50  
BLOCK 51  
BLOCK 52  
BLOCK 53  
BLOCK 54  
BLOCK 55  
BLOCK 56  
BLOCK 57  
BLOCK 58  
BLOCK 59  
BLOCK 60  
BLOCK 61  
BLOCK 62  
BLOCK 63  
BLOCK 64  
BLOCK 65  
BLOCK 66  
BLOCK 67  
BLOCK 68  
BLOCK 69  
BLOCK 70  
BLOCK 71  
BLOCK 72  
BLOCK 73  
BLOCK 74  
BLOCK 75  
BLOCK 76  
BLOCK 77  
BLOCK 78  
BLOCK 79  
BLOCK 80  
BLOCK 81  
BLOCK 82  
BLOCK 83  
BLOCK 84  
BLOCK 85  
BLOCK 86  
BLOCK 87  
BLOCK 88  
BLOCK 89  
BLOCK 90  
BLOCK 91  
BLOCK 92  
BLOCK 93  
BLOCK 94  
BLOCK 95  
BLOCK 96  
BLOCK 97  
BLOCK 98  
BLOCK 99  
BLOCK 100

BLOCK ONE  
BLOCK TWO  
BLOCK THREE  
BLOCK FOUR

BLOCK FIVE  
BLOCK SIX  
BLOCK SEVEN  
BLOCK EIGHT  
BLOCK NINE  
BLOCK TEN  
BLOCK ELEVEN  
BLOCK TWELVE  
BLOCK THIRTEEN  
BLOCK FOURTEEN  
BLOCK FIFTEEN  
BLOCK SIXTEEN  
BLOCK SEVENTEEN  
BLOCK EIGHTEEN  
BLOCK NINETEEN  
BLOCK TWENTY  
BLOCK TWENTY ONE  
BLOCK TWENTY TWO  
BLOCK TWENTY THREE  
BLOCK TWENTY FOUR  
BLOCK TWENTY FIVE  
BLOCK TWENTY SIX  
BLOCK TWENTY SEVEN  
BLOCK TWENTY EIGHT  
BLOCK TWENTY NINE  
BLOCK THIRTY  
BLOCK THIRTY ONE  
BLOCK THIRTY TWO  
BLOCK THIRTY THREE  
BLOCK THIRTY FOUR  
BLOCK THIRTY FIVE  
BLOCK THIRTY SIX  
BLOCK THIRTY SEVEN  
BLOCK THIRTY EIGHT  
BLOCK THIRTY NINE  
BLOCK FORTY  
BLOCK FORTY ONE  
BLOCK FORTY TWO  
BLOCK FORTY THREE  
BLOCK FORTY FOUR  
BLOCK FORTY FIVE  
BLOCK FORTY SIX  
BLOCK FORTY SEVEN  
BLOCK FORTY EIGHT  
BLOCK FORTY NINE  
BLOCK FIFTY  
BLOCK FIFTY ONE  
BLOCK FIFTY TWO  
BLOCK FIFTY THREE  
BLOCK FIFTY FOUR  
BLOCK FIFTY FIVE  
BLOCK FIFTY SIX  
BLOCK FIFTY SEVEN  
BLOCK FIFTY EIGHT  
BLOCK FIFTY NINE  
BLOCK SIXTY  
BLOCK SIXTY ONE  
BLOCK SIXTY TWO  
BLOCK SIXTY THREE  
BLOCK SIXTY FOUR  
BLOCK SIXTY FIVE  
BLOCK SIXTY SIX  
BLOCK SIXTY SEVEN  
BLOCK SIXTY EIGHT  
BLOCK SIXTY NINE  
BLOCK SEVENTY  
BLOCK SEVENTY ONE  
BLOCK SEVENTY TWO  
BLOCK SEVENTY THREE  
BLOCK SEVENTY FOUR  
BLOCK SEVENTY FIVE  
BLOCK SEVENTY SIX  
BLOCK SEVENTY SEVEN  
BLOCK SEVENTY EIGHT  
BLOCK SEVENTY NINE  
BLOCK EIGHTY  
BLOCK EIGHTY ONE  
BLOCK EIGHTY TWO  
BLOCK EIGHTY THREE  
BLOCK EIGHTY FOUR  
BLOCK EIGHTY FIVE  
BLOCK EIGHTY SIX  
BLOCK EIGHTY SEVEN  
BLOCK EIGHTY EIGHT  
BLOCK EIGHTY NINE  
BLOCK NINETY  
BLOCK NINETY ONE  
BLOCK NINETY TWO  
BLOCK NINETY THREE  
BLOCK NINETY FOUR  
BLOCK NINETY FIVE  
BLOCK NINETY SIX  
BLOCK NINETY SEVEN  
BLOCK NINETY EIGHT  
BLOCK NINETY NINE  
BLOCK ONE HUNDRED

DARLING DRIVE  
KARNIS DR.  
RIDGEWOOD  
WHITCOMB'S  
EXCEPTION #4  
C.S.A.H. NO. 44  
G.S.A.H. NO. 44  
PUBLIC RD.  
E 1/4 Cor.  
#1  
#2  
#3  
#4  
#5  
#6  
#7  
#8  
#9  
#10  
#11  
#12  
#13  
#14  
#15  
#16  
#17  
#18  
#19  
#20  
#21  
#22  
#23  
#24  
#25  
#26  
#27  
#28  
#29  
#30  
#31  
#32  
#33  
#34  
#35  
#36  
#37  
#38  
#39  
#40  
#41  
#42  
#43  
#44  
#45  
#46  
#47  
#48  
#49  
#50  
#51  
#52  
#53  
#54  
#55  
#56  
#57  
#58  
#59  
#60  
#61  
#62  
#63  
#64  
#65  
#66  
#67  
#68  
#69  
#70  
#71  
#72  
#73  
#74  
#75  
#76  
#77  
#78  
#79  
#80  
#81  
#82  
#83  
#84  
#85  
#86  
#87  
#88  
#89  
#90  
#91  
#92  
#93  
#94  
#95  
#96  
#97  
#98  
#99  
#100