

**AN ORDINANCE EXTENDING THE CORPORATE
LIMITS OF THE CITY OF BAGLEY**

WHEREAS, A petition requesting annexation of territory hereinafter described was duly presented to the City Council on the 7th day of April, 1998; and

WHEREAS, These proceedings are authorized under Minnesota Statutes 414.033, Subd. 13.

WHEREAS, the quantity of land embraced within the area described in the Petition is approximately four acres of platted land, and whereas the land described in the Petition abuts the City limits of Bagley on the northwest boundary thereof,

NOW THEREFORE, The City Council of Bagley, Minnesota, ordains:

Section 1. The City Council hereby determines (1) that the annexation will be in the best interests of the City and of the territory affected; (2) that the land described herein abuts on the city limits and is suburban in character; and (3) that said land is not now included within the limits of any city, village, or borough.

Section 2. Territory Annexed. The corporate limits of the City are hereby extended to include the platted land described as follows and the same is hereby annexed to and included within the city as effectually as if it had originally been a part hereof:

Lot One (1) less the southeasterly 60 feet thereof, and Lots Two (2) Three (3), Four (4), Five (5) Six (6) and Lot Seven (7) Block Four (4) Berg's Subdivision and Lots Four (4), Five (5), Six (6) and Seven (7) Block Five (5) Berg's Subdivision, together with abutting platted streets or alleys.

Section 3. Filing. The City Clerk is hereby directed to file certified copies of this Ordinance with the Minnesota Municipal Board, Copley Township, the Clearwater County Auditor, and the Secretary of State.

Section 4. Effective Date. This ordinance takes effect upon its passage and publication, the filing of the certified copies as directed in Section 3, and approval by the Minnesota Municipal Board.


Adopted by the Council this 14th day of July, 1998.



Mayor

(S E A L)

Attest:



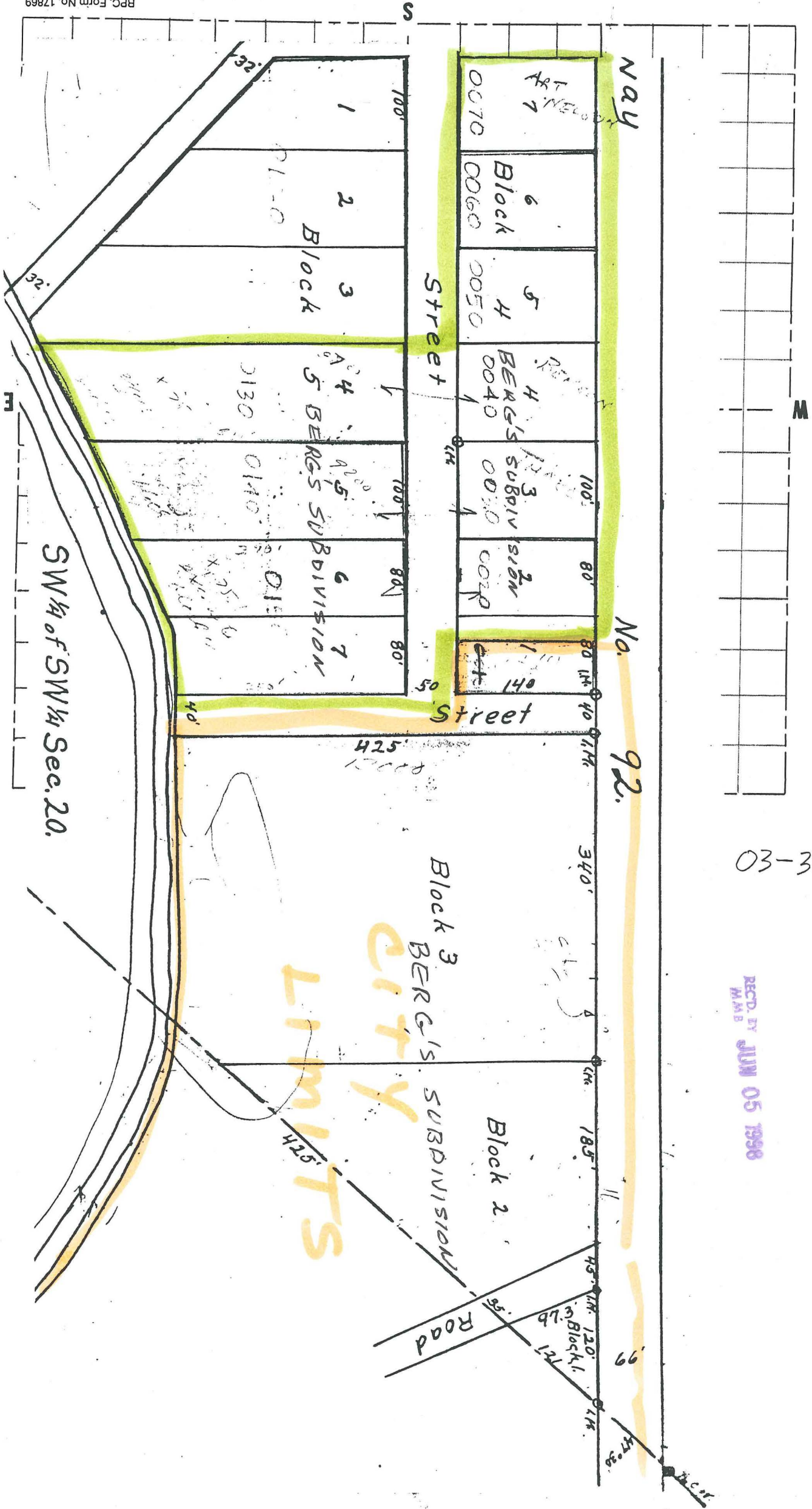
City Clerk Treasurer

Published in the Farmer's Independent this 5th day of
August, 1998.

--	--	--	--	--	--	--	--	--	--	--	--	--	--	--	--	--	--	--	--	--

03-303

REC'D. BY JUN 05 1998
M.M.B.



NAY

No. 92

99

Street

Street

Block 3
BERG'S
SUBDIVISION
LIMITS

Block 2

Road

SW 1/4 of SW 1/4 Sec. 20.

Block 1
Block 2
Block 3
Block 4
Block 5
Block 6
Block 7

0130

0140

0150

ART
0070

Block 6
0060

Block 5
0050

Block 4
BERG'S SUBDIVISION
0040

Block 3
BERG'S SUBDIVISION
0030

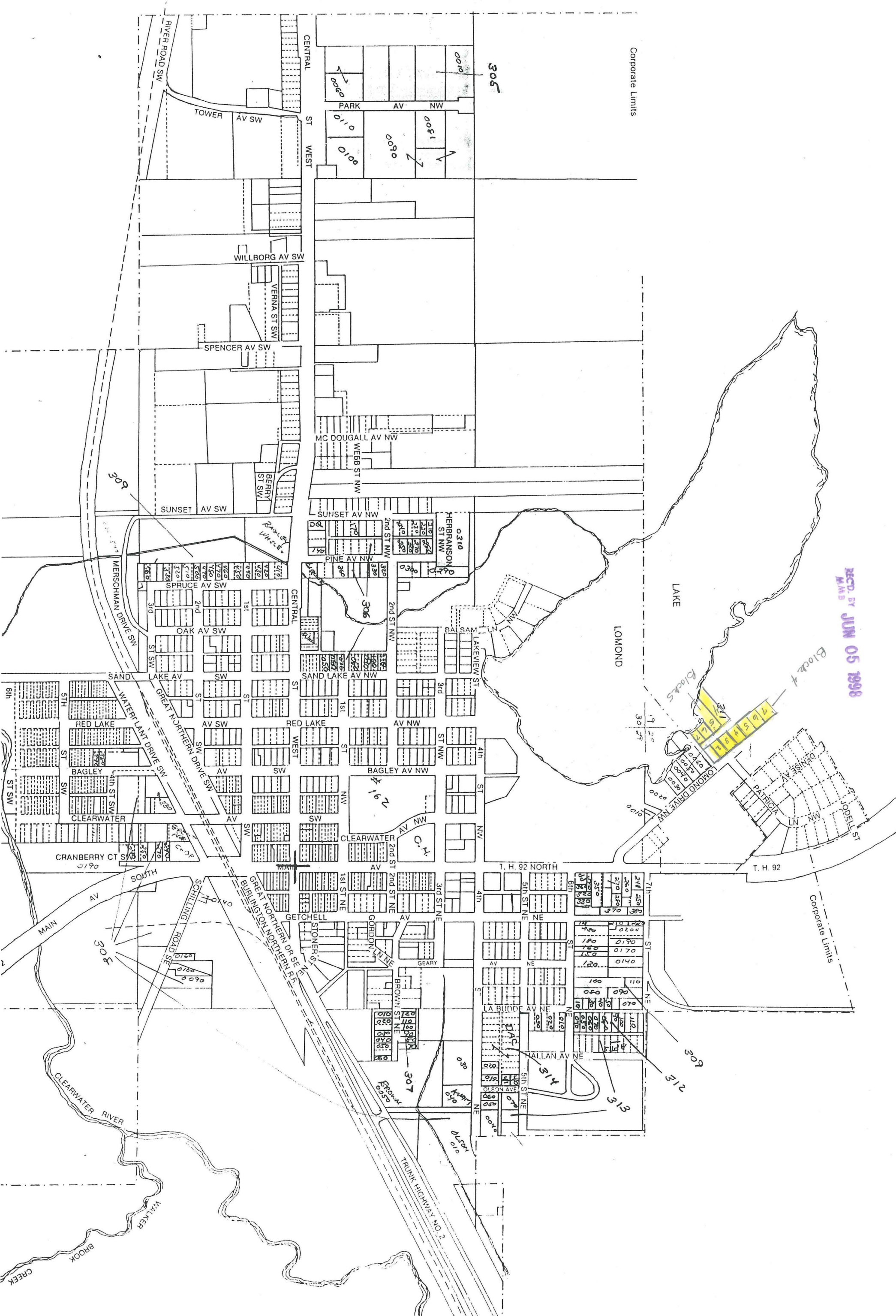
Block 2
CORP
0020

Block 1
ART
0070

S

M

M



REC'D. BY JUN 05 1998
RMB

Block 4

LAKE

LOMOND

T. H. 92

T. H. 92 NORTH

TRUNK HIGHWAY NO. 2

CLEARWATER RIVER
WALKER CREEK

Corporate Limits

Corporate Limits

305

305

306

307

308

307

313

312

314

315

316

317

318

319

320

321

322

323

324

325

326

327

328

329

330

331

332

333

334

335

336

337

338

339

340

341

342

343

344

345

346

347

348

349

350

351

352

353

354

355

356

357

358

359

360

361

362

363

364

365

366

367

368

369

370

371

372

373

374

375

376

377

378

379

380

381

382

383

384

385

386

387

388

389

390

391

392

393

394

395

396

397

398

399

400