

ORDINANCE 16, THIRD SERIES

AN ORDINANCE EXTENDING THE CORPORATE LIMITS OF THE CITY OF PIPESTONE TO INCLUDE CERTAIN UNINCORPORATED LAND OWNED BY THE CITY OF PIPESTONE AND ABUTTING UPON THE CITY LIMITS (M.S.A. 414.033).

WHEREAS, the territory hereinafter described is owned by the City of Pipestone; and

WHEREAS, the land described abuts upon the City limits of the South boundary thereof.

THE COUNCIL OF THE CITY OF PIPESTONE ORDAINS:

Section 1. The City Council hereby determines that (1) the territory described herein abuts upon the City limits and is urban in character and (2) that none of the territory is now included within the limits of any City.

Section 2. The population of the territory is zero.

Section 3. Territory Annexed: The corporate limits of the City are hereby extended to include the platted land described as follows and the same is hereby annexed to and included within the City as effectively as if it had originally been a part thereof:

A tract of land in the NE 1/4 of Section 13, Township 106,  
Range 46 described as follows: Brown's Third Addition,  
Outlot 2 (1.606 acres).

Section 4. Filing: The Deputy Clerk is directed to file certified copies of this ordinance with the Minnesota Municipal Board, the Secretary of State, the Township Clerk and the County Auditor.

Section 5. Effective Date: This ordinance shall take effect upon its passage and publication and the filing of the certified copies as directed in Section 4, and approval of the ordinance by the Minnesota Municipal Board.

Adopted by the City Council this 2nd day of March, 1998.

/s/ Billy R. Ellis

Billy R. Ellis  
Mayor

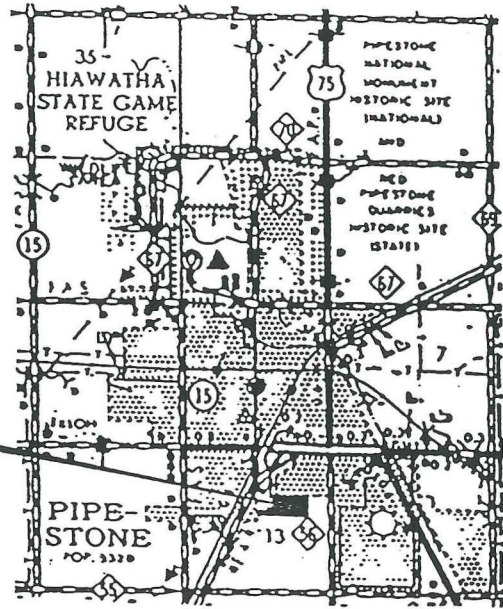
ATTEST:

/s/ Joan Schroeder

Joan Schroeder  
Deputy Clerk

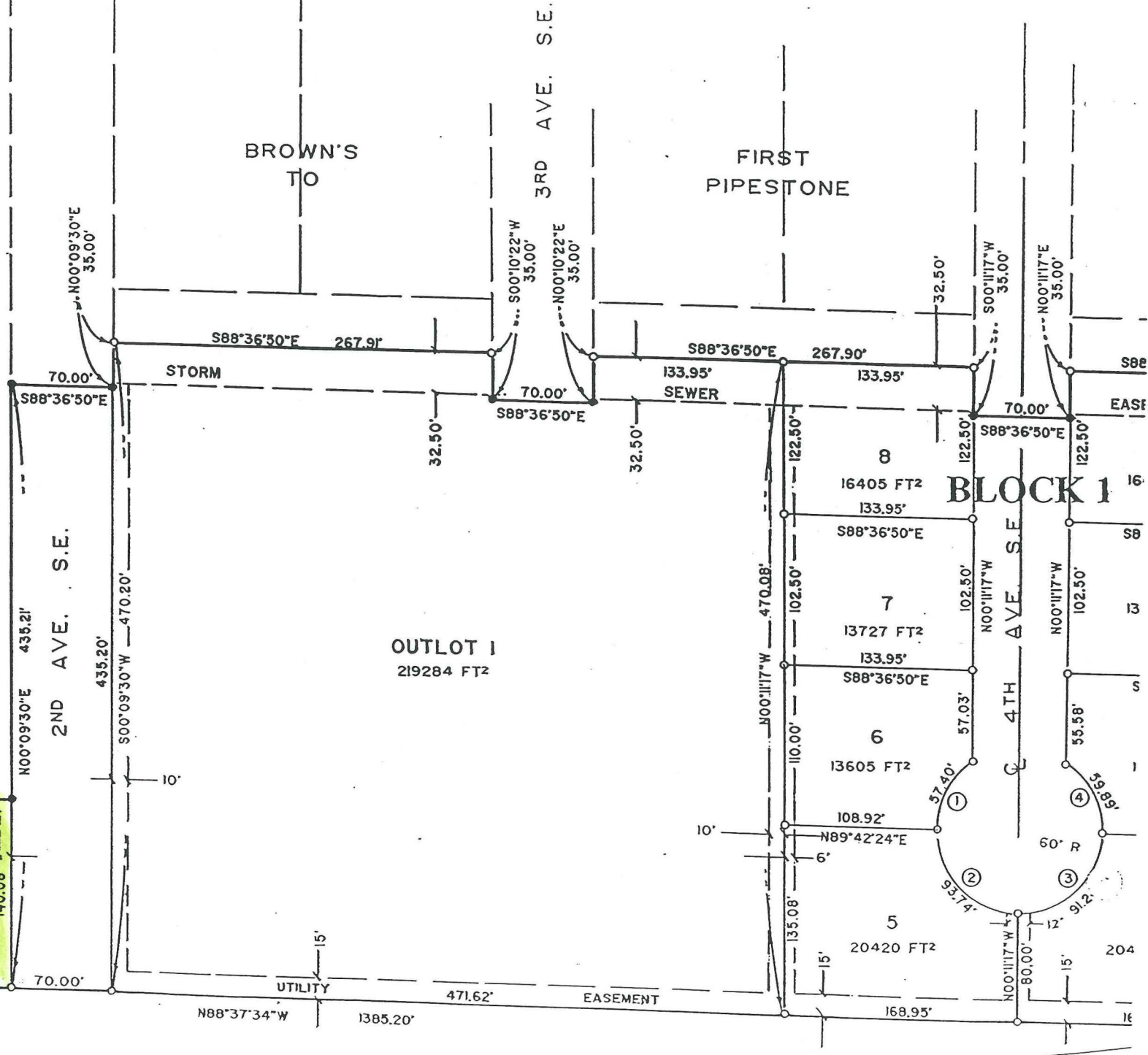
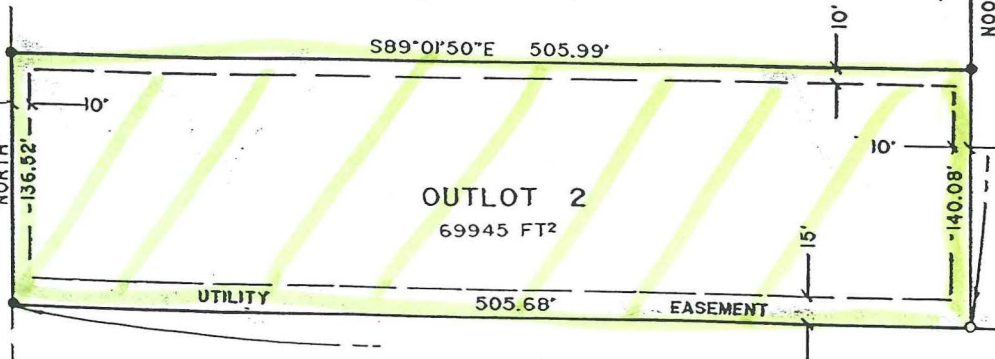
(Published in the Pipestone County Star on March 5, 1998).

REC'D. BY  
MMB MAY 20 1998

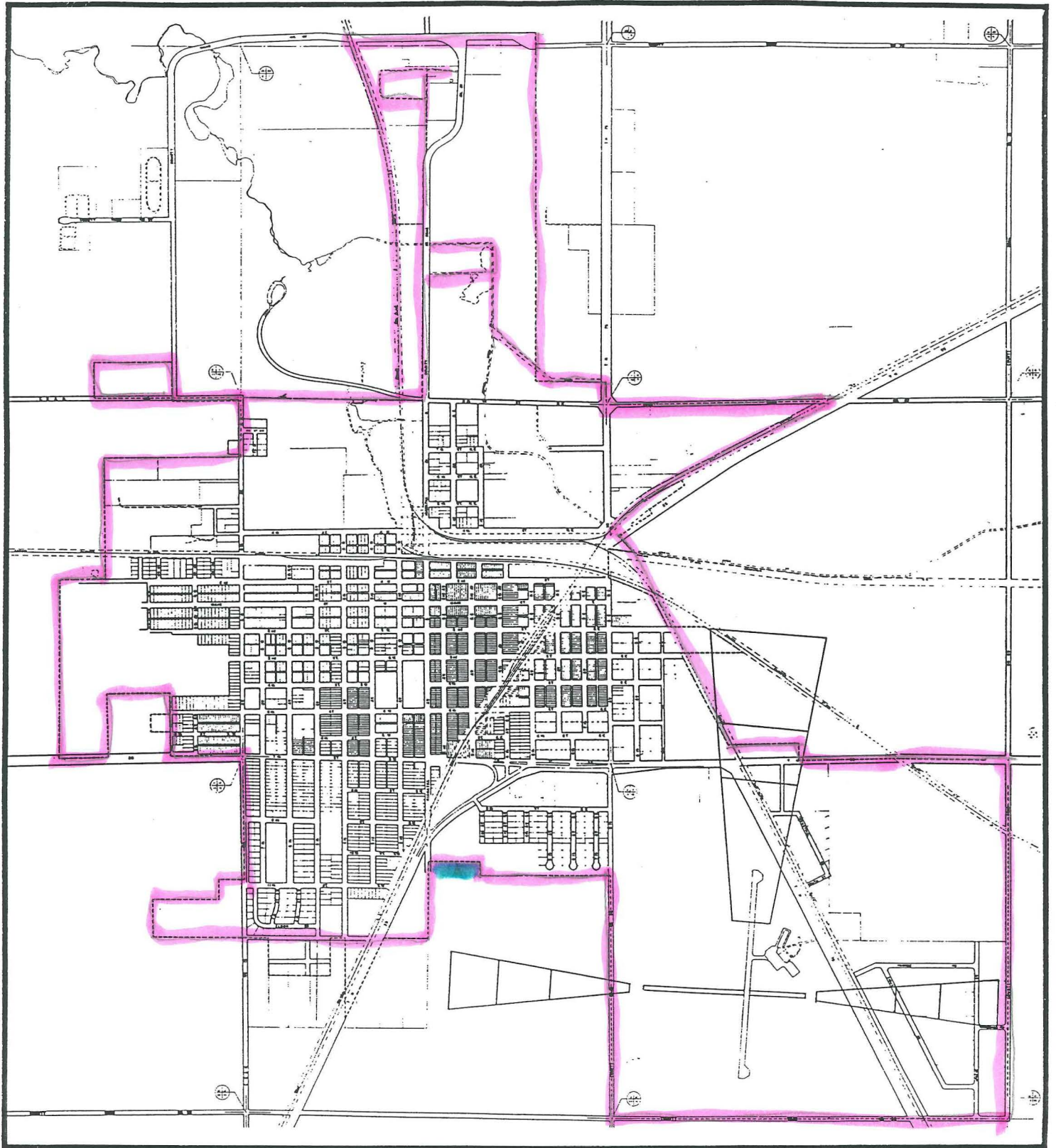


BROWN'S 3RD ADDITION

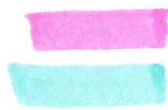
W.D.# 139282 &  
W.D.# 143359



UNPLATTED



**PIPESTONE,  
MINNESOTA**

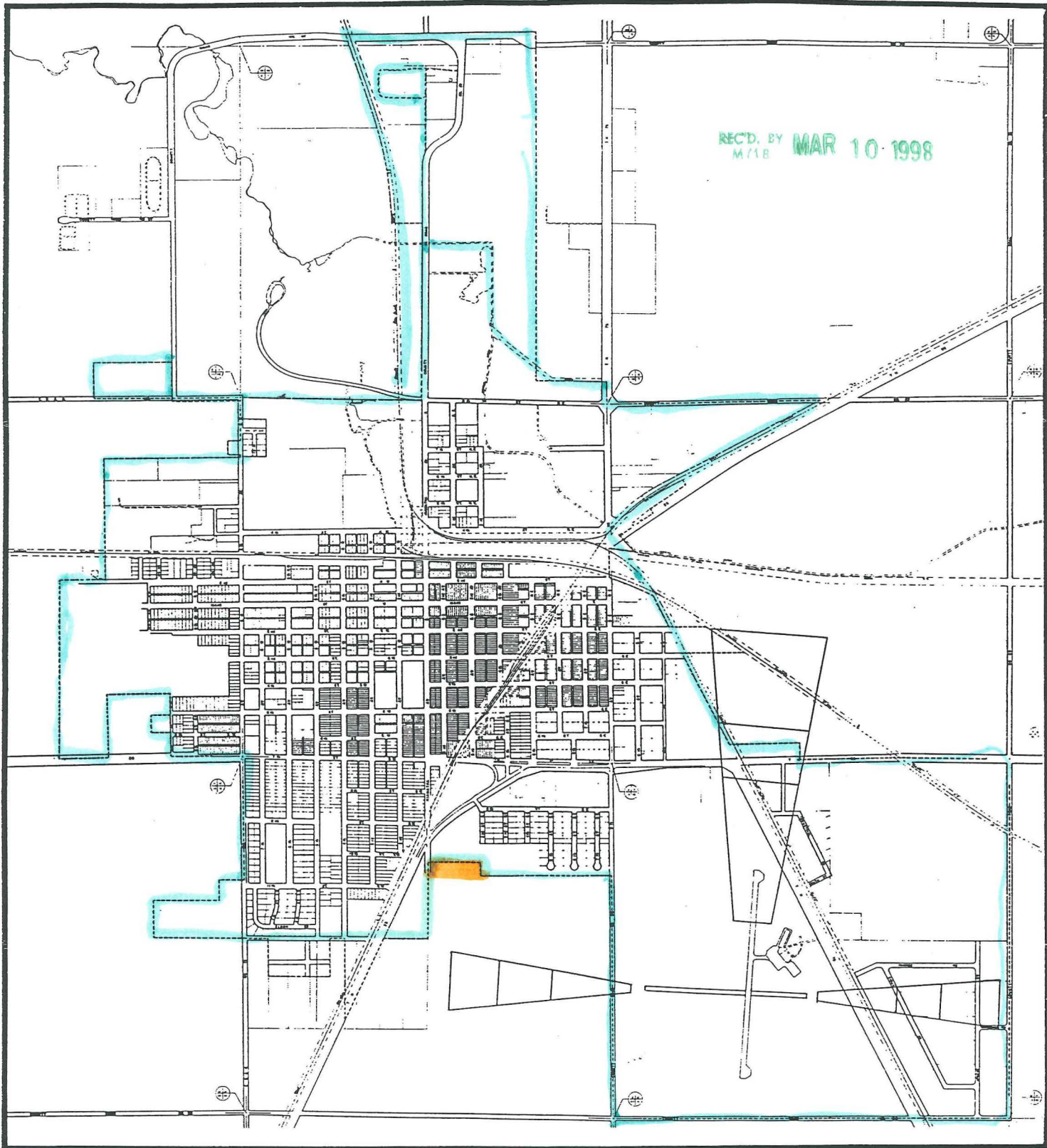


City Limits  
Annexed Property

RECD. BY MAY 20 1998  
M.M.B.



REC'D. BY MAR 10 1998  
M718



**PIPESTONE,  
MINNESOTA**



City limits

Annexed Property