

AN ORDINANCE ANNEXING CERTAIN UNINCORPORATED PROPERTY  
ABUTTING THE CITY OF STAPLES  
PURSUANT TO MINNESOTA STATUTES SECTION 414.033

WHEREAS, the City of Staples has studied its municipal borders and the City's growth patterns and the City further desires to promote orderly growth and provide municipal services in an efficient manner; and

WHEREAS, the property which is the subject of this annexation abuts the municipality, and the area to be annexed is less than 60 acres, and the municipality has received a petition for annexation from all of the property owners of the land; and

WHEREAS, the City finds that the property proposed for annexation is or about to become urban or suburban in character and the annexation by the City of Staples is required to protect the public health, safety and welfare and the annexation is in the best interests of the property proposed for annexation; and

WHEREAS, the City held a public hearing concerning the annexation on August 26, 1997 following 30 days written notice by certified mail to the township affected by the proposed ordinance and to all landowners within and contiguous to the area being annexed, and no objections to the annexation were received by the City; and

WHEREAS, the City desires to proceed with the annexation of said property by ordinance pursuant to Minnesota Statutes Section 414.033;

NOW, THEREFORE, BE IT ORDAINED by the City Council of the City of Staples as follows:

Section 1. The corporate limits of the City are hereby amended to include the following described property currently in the jurisdiction of Staples Township in Todd County, Minnesota, which property consists of approximately .6 acres, and the property is hereby annexed to and included within the corporate limits of the City pursuant to Minnesota Statutes Section 414.033 as if such property had originally been a part of the City:

Lots 9, 10, 11, and 12 of Block 3 of Bigelow's Addition to Staples, according to the plat thereof on file and of record in the office of the Todd County Recorder, together with all abutting streets and alleys.

Section 2. Pursuant to the City Zoning Ordinance, the City Council hereby designates the above described parcel of property being annexed herein to be residential.

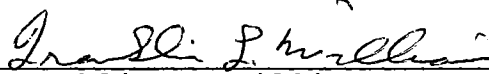
Section 3. The amount required to pay the filing fee of the Minnesota Municipal Board for this annexation ordinance is hereby appropriated for such purpose and the City Administrator is directed to make the necessary filings and provide required information to the Minnesota Municipal Board, the Township of Staples, the Auditor of Todd County, and the Minnesota Secretary of State.

Section 4. The subject property contains one household with an estimated population of one.

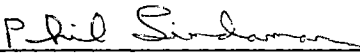
Section 5. This ordinance is effective upon passage and publication pursuant to the Staples City Charter, Minnesota Statutes, and approval by the Minnesota Municipal Board.

PASSED by the City Council of the City of Staples this 26th day of August, 1997.

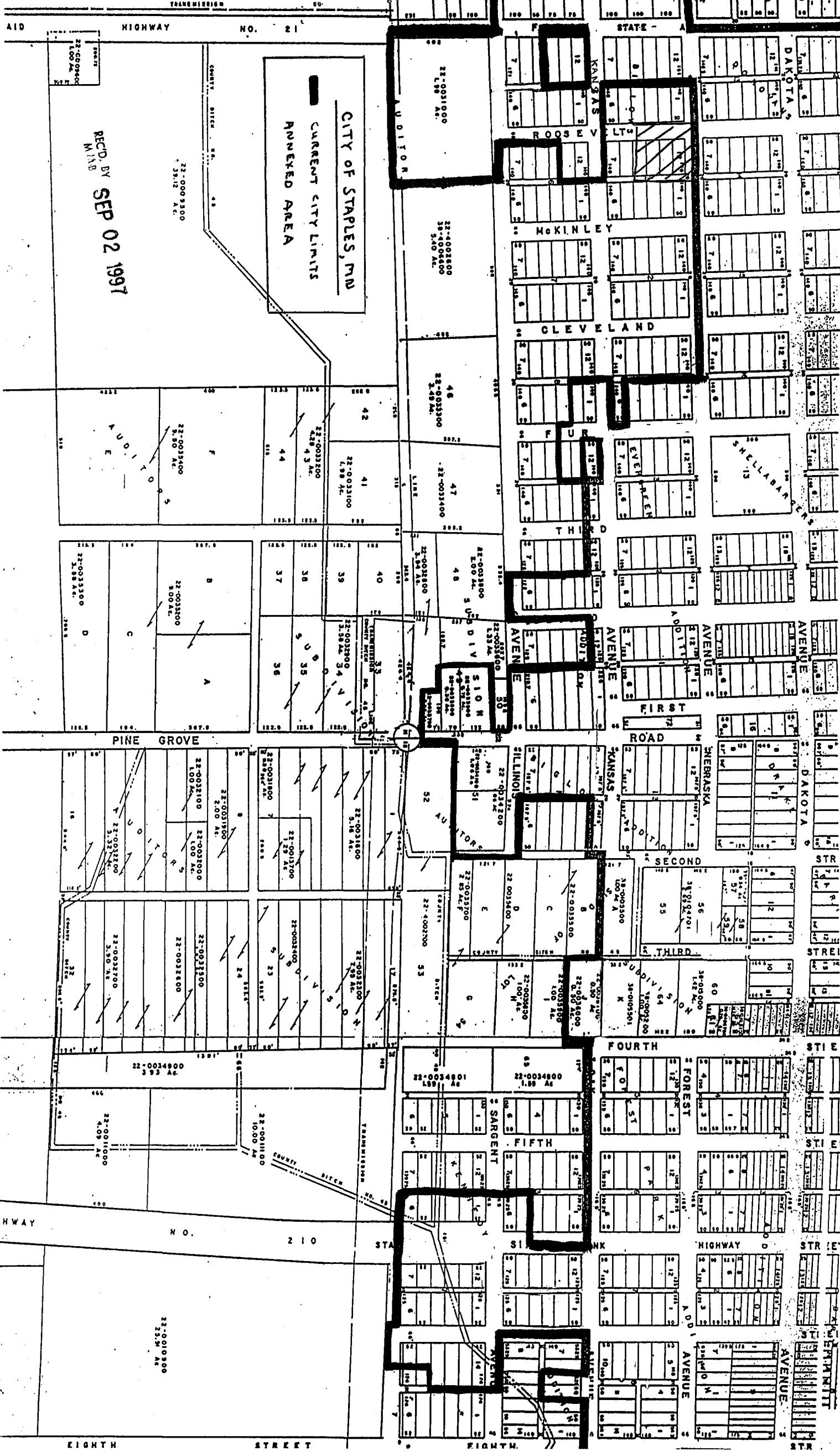
APPROVED BY

  
\_\_\_\_\_  
Franklin L. Williams  
Mayor

ATTEST

  
\_\_\_\_\_  
Phil Lindaman  
City Clerk

First Reading: August 12, 1997  
Second Reading: August 26, 1997  
Adoption: August 26, 1997  
Published: September 4, 1997



REC'D. BY  
M.I.H.B.  
SEP 02 1997

CITY OF STAPLES, MN  
CURRENT CITY LIMITS  
ANNEXED AREA

AUDITOR  
22-0011900  
1.99 AC.

22-0021800  
28-4005800  
3.40 AC.

46  
22-0031300  
2.49 AC.

47  
22-0031400

48  
22-0031500  
2.00 AC.

50  
22-0031600  
1.33 AC.

52  
22-0031700  
1.96 AC.

53  
22-0021700

54  
22-0031800  
1.99 AC.

55  
22-0031900

56  
22-0010200  
23.14 AC.

57  
22-0032000

STATE - A  
DAKOTA  
KANSAS  
ROOSEVELT  
MCKINLEY  
CLEVELAND  
SHELLBAR  
EVELYN  
THIRD  
AVENUE  
FIRST  
ROAD  
DAKOTA  
STREET  
NEBRASKA  
SECOND  
THIRD  
FOURTH  
FIFTH  
SARGENT  
HIGHWAY  
AUGUSTINE  
AVENUE  
EIGHTH  
STREET

PINE GROVE

HWAY NO. 210 STA

EIGHTH STREET