

CITY OF WINTHROP
ORDINANCE NUMBER
212

REC'D. BY
MIA/B OCT 09 1997

AN ORDINANCE EXTENDING THE CORPORATE LIMITS
OF THE CITY OF WINTHROP TO INCLUDE
CERTAIN UNINCORPORATED AND UNPLATTED LAND
NOT EXCEEDING 200 ACRES IN AREA
ABUTTING UPON THE CITY LIMITS
(BETTY M. KUEHN)

WHEREAS, A CERTAIN PETITION DATED AUGUST 20TH, 1997,
HEREINAFTER DESCRIBED WAS DULY PRESENTED TO THE CITY COUNCIL ON
THE 20TH DAY OF AUGUST, 1997; AND

WHEREAS, THE PETITION WAS SIGNED BY ALL OWNERS; AND

WHEREAS, PURSUANT TO MINN. STAT. § 414.033, SUBD. 13, THE
PETITIONERS HAVE BEEN NOTIFIED OF ANY CHANGES IN THEIR ELECTRIC
UTILITY COSTS; AND

WHEREAS, NO OBJECTIONS TO THE ANNEXATION HAVE BEEN
RECEIVED FROM THE TOWN BOARD, OR THE GOVERNMENT BODY OF ANY
MUNICIPALITY WHOSE BOUNDARIES ABUT UPON THE BOUNDARIES OF THE
LAND TO BE ANNEXED' AND

WHEREAS, THE LAND DESCRIBED IN THE PETITION BUTS UPON THE
CITY LIMITS AT THE SOUTH BOUNDARY THEREOF.

NOW, THEREFORE, THE CITY COUNCIL ORDAINS:

SECTION I. THE CITY COUNCIL HEREBY DETERMINES (1)
THAT THE TERRITORY DESCRIBED HEREIN ABUTS UPON THE
CITY LIMITS AND IS ABOUT TO BECOME URBAN OR SUBURBAN
IN CHARACTER; AND (2) THAT NONE OF THE TERRITORY IS NOW
INCLUDED WITHIN THE LIMITS OF ANY CITY.

SECTION II. THE POPULATION OF THE TERRITORY IS ONE
(1).

SECTION III. TERRITORY ANNEXED. THE CORPORATE
LIMITS OF THE CITY ARE HEREBY EXTENDED TO INCLUDE THE
UNPLATTED LAND DESCRIBED IN ATTACHMENT "A" AND THE
SAME IS HEREBY ANNEXED TO AND INCLUDED WITHIN THE CITY
AS EFFECTUALLY AS IF IT HAD ORIGINALLY BY A PART THEREOF.

CITY OF WINTHROP
ORDINANCE NUMBER
212

REC'D. BY
M/TAG OCT 09 1997

SECTION IV. FILING. THE CITY CLERK IS HEREBY DIRECTED TO FILE CERTIFIED COPIES OF THIS ORDINANCE WITH THE MINNESOTA MUNICIPAL BOARD, THE SECRETARY OF STATE, THE ALFSBORG TOWN CLERK, AND THE SIBLEY COUNTY AUDITOR.

SECTION V. EFFECTIVE DATE. THIS ORDINANCE TAKES EFFECT UPON ITS PASSAGE AND PUBLICATION AND THE FILING OF THE CERTIFIED COPIES AS DIRECTED IN SECTION 3, AND APPROVAL OF THE ORDINANCE BY THE MINNESOTA MUNICIPAL BOARD.

ADOPTED BY THE CITY COUNCIL OF THE CITY OF WINTHROP, MINNESOTA, THIS 22ND DAY OF SEPTEMBER 1997, TO WIT:

AYES: CONKLIN, NELSON, MCCARTHY, WERNER, MACHAIEK
NAYS: NONE
PRESENT-NOT VOTING: NONE
ABSENT: NONE

ATTEST:



CITY CLERK



MAYOR

FIRST READING: AUGUST 20TH, 1997
SECOND READING: ADOPTION: SEPTEMBER 22ND, 1997
PUBLICATION: OCTOBER 1ST, 1997

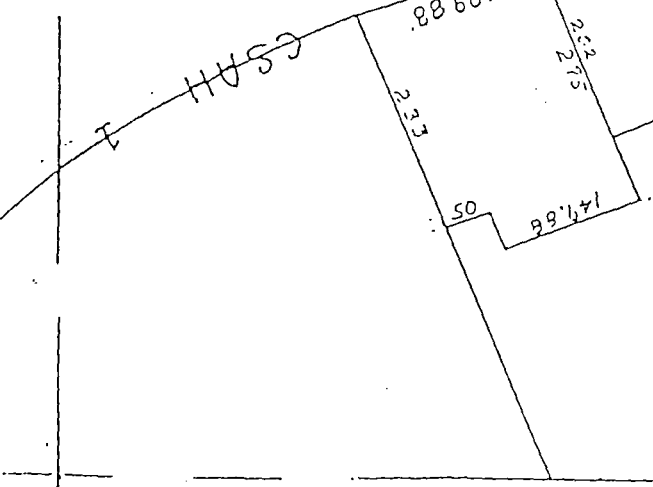
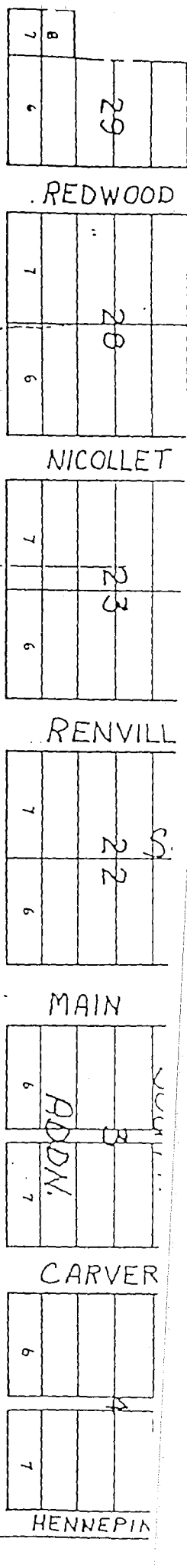
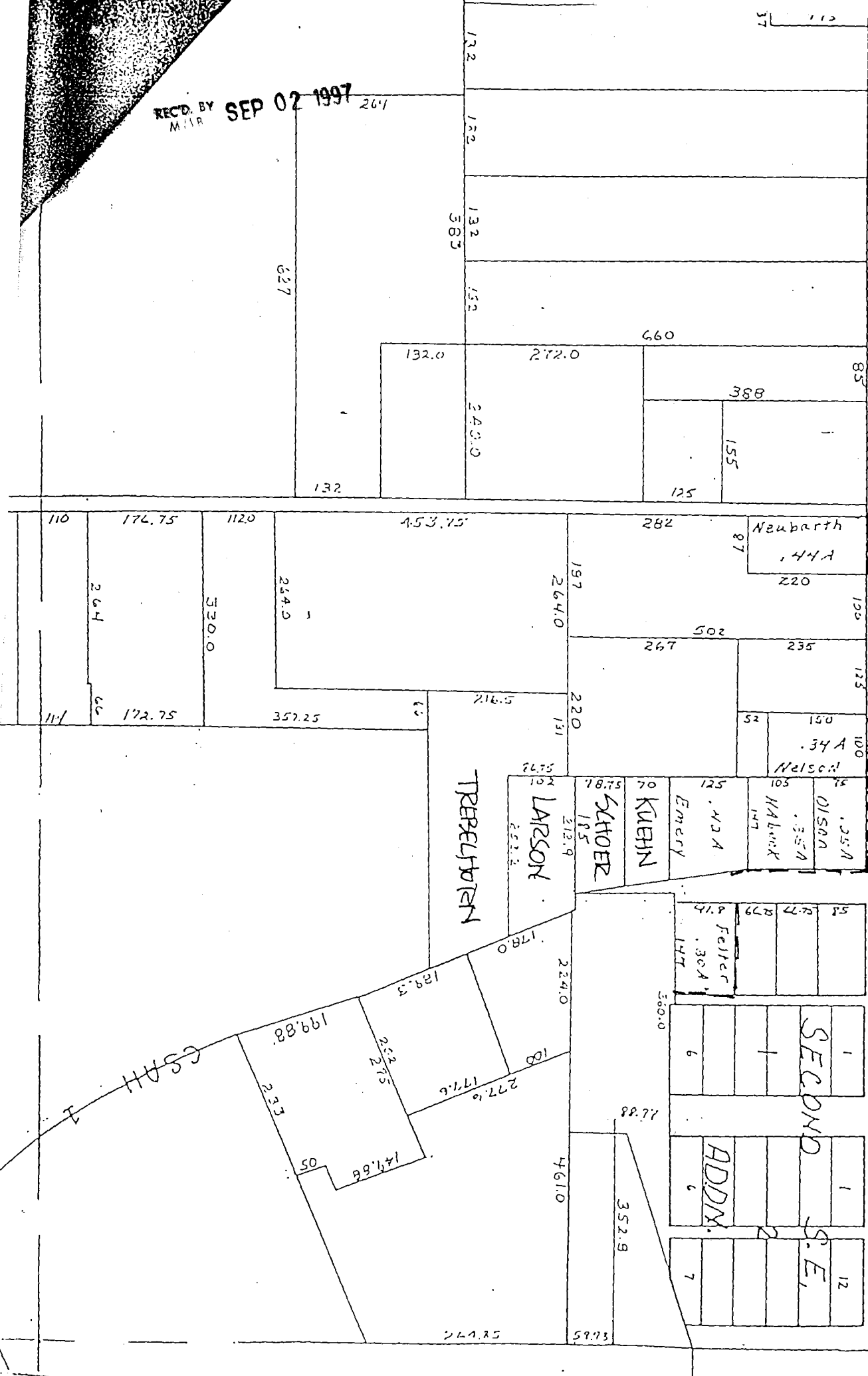
CITY OF WINTHROP
ORDINANCE NUMBER
212

REC'D. BY
MAB OCT 09 1997

EXHIBIT "A"

SOUTH SEVENTY (70) FEET OF THE NORTH ONE HUNDRED
NINETY-FIVE (195) FEET OF OUTLOTS TWO (2) AND THREE (3)
THORSON AND SWENSON'S SUBDIVISION OF SECTION 6,
TOWNSHIP 112, RANGE 29.

REC'D. BY
M.I.R. SEP 02 1997



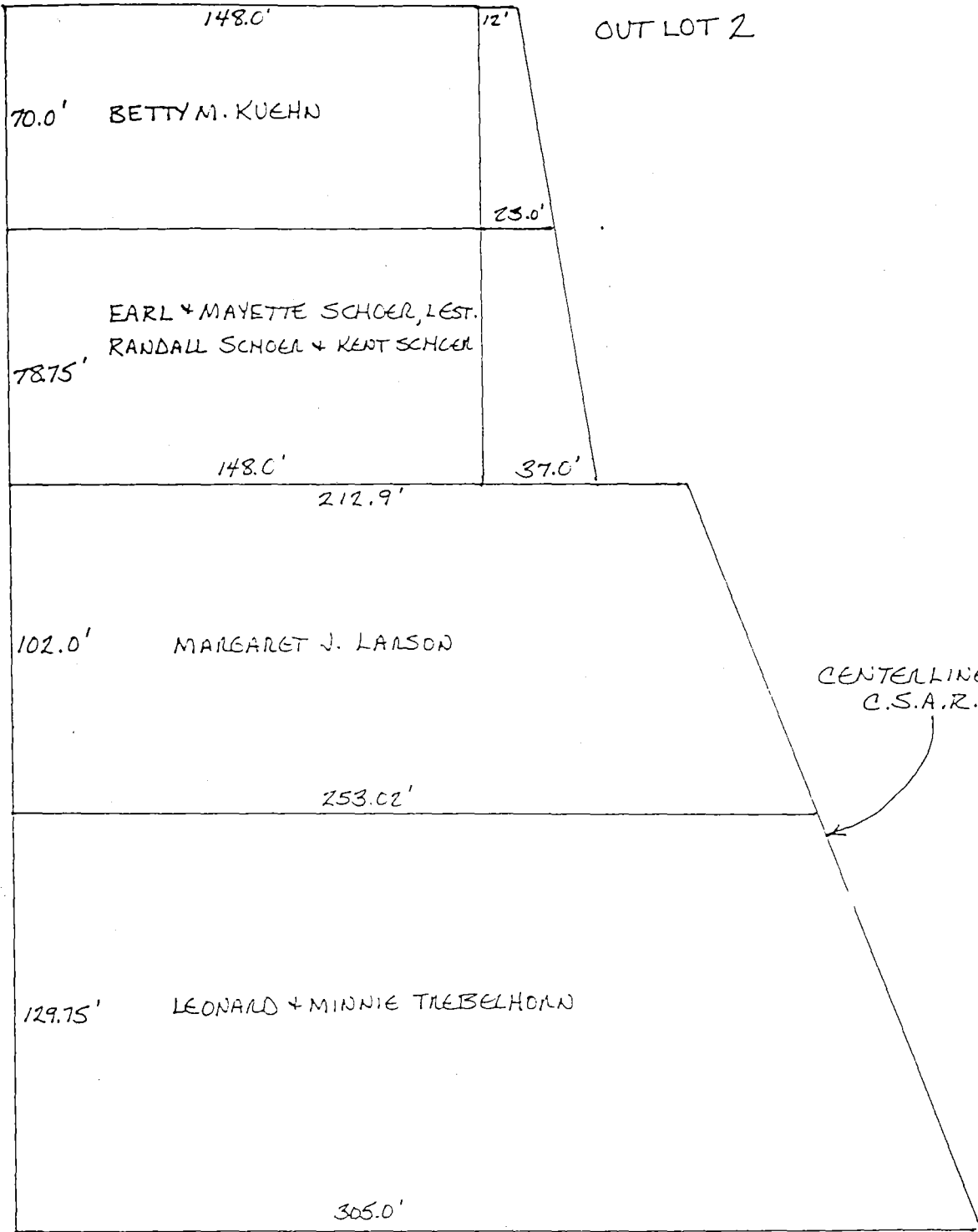
↑
NORTH

REC'D. BY
MMB SEP 02 1997

OUTLOT 3

OUTLOT 2

273.75'



CENTELINE OF
C.S.A.R. #1