

ORDINANCE NO. 38, 2nd Series

RECEIVED JUN 05 1997
M M S

AN ORDINANCE EXTENDING THE CORPORATE LIMITS OF THE CITY TO INCLUDE CERTAIN PLATTED LANDS ABUTTING UPON THE CITY LIMITS.

WHEREAS, a petition dated April 2, 1997, was duly presented to the City Council for the City of Sleepy Eye on April 3, 1997, pursuant to Minnesota Statutes 414.033, Subdivision 5, and

WHEREAS, the quantity of land embraced within the area described in the petition is 6.29 acres, no part of which is included within the limits of an unincorporated city; and

WHEREAS, the petition was signed by the sole owner of the property; and

WHEREAS, the Town Board of Home Township on which the land is located has waived any objections to said annexation; and

WHEREAS, the land described in the petition abuts upon the city limits at the southern boundary thereof and is urban or suburban in character, and will be used for commercial purposes, and may be accorded road and city utilities;

NOW, THEREFORE, the City of Sleepy Eye does ordain as follows:

SECTION ONE: The City Council hereby determines that the annexation will be to the best interests of the City and of the territory affected, that the territory described herein abuts upon the city limits and is urban or suburban in character, and that none of the said territory is now included within the limits of any city and does not abut upon the limits of any other city.

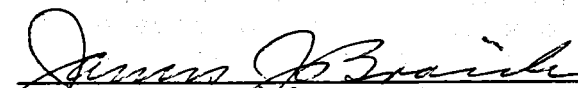
SECTION TWO: The corporate limits of the City are hereby extended to include the platted land described as follows, and the same is hereby annexed to and included within the City as effectually as if it had originally been a part hereof:

Lot 1, Block 1, Advertising Unlimited First Addition,
N $\frac{1}{2}$ of SE $\frac{1}{4}$, Section 31, Township 110N, Range 32 West,
Brown County, Minneosta.

SECTION THREE: The City Clerk is hereby directed to file certified copies of this Ordinance with the Minnesota Municipal Commission, Secretary of State, the Home Township Clerk, and the County Auditor.

SECTION FOUR: This Ordinance takes effect upon its passage and publication and the filing of the certified copies as directed in Section Three and approval of the Minnesota Municipal Commission.

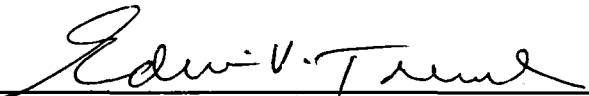
Passed by the City Council for the City of Sleepy Eye, Minnesota, on May 6, 1997.


James J. Broich, Mayor

RECEIVED BY
MMR JUN 05 1997

I do hereby certify and attest that the City Council of the City of Sleepy Eye, Minnesota, did pass the above Ordinance on March 3, 1997, in accordance with the charter provisions and state laws provided therefore.

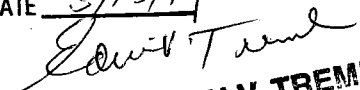
Dated: May 6, 1997.


Edwin V. Treml, City Clerk

Published in the Sleepy Eye Herald
Dispatch, Sleepy Eye, Minnesota,
on May 15, 1997.

"I CERTIFY THIS TO
BE A TRUE AND
EXACT COPY OF THE
ORIGINAL."

DATE 5/13/97



EDWIN V. TREML
City Clerk/Treasurer
Sleepy Eye, Minnesota

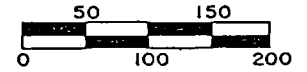
ADVERTISING UNLIMITED FIRST SUBDIVISION

N. 1/2 - S.E. 1/4, SEC. 31, TWP. 110N., RGE. 32 W.
HOME TWP., BROWN COUNTY, MINNESOTA

UNPLATTED

RECORDED BY
JAMR APR 11 1997

VIEW
RECORD
ADDITION



- DENOTES MONUMENT FOUND
- DENOTES IRON PIPE MONUMENT SET

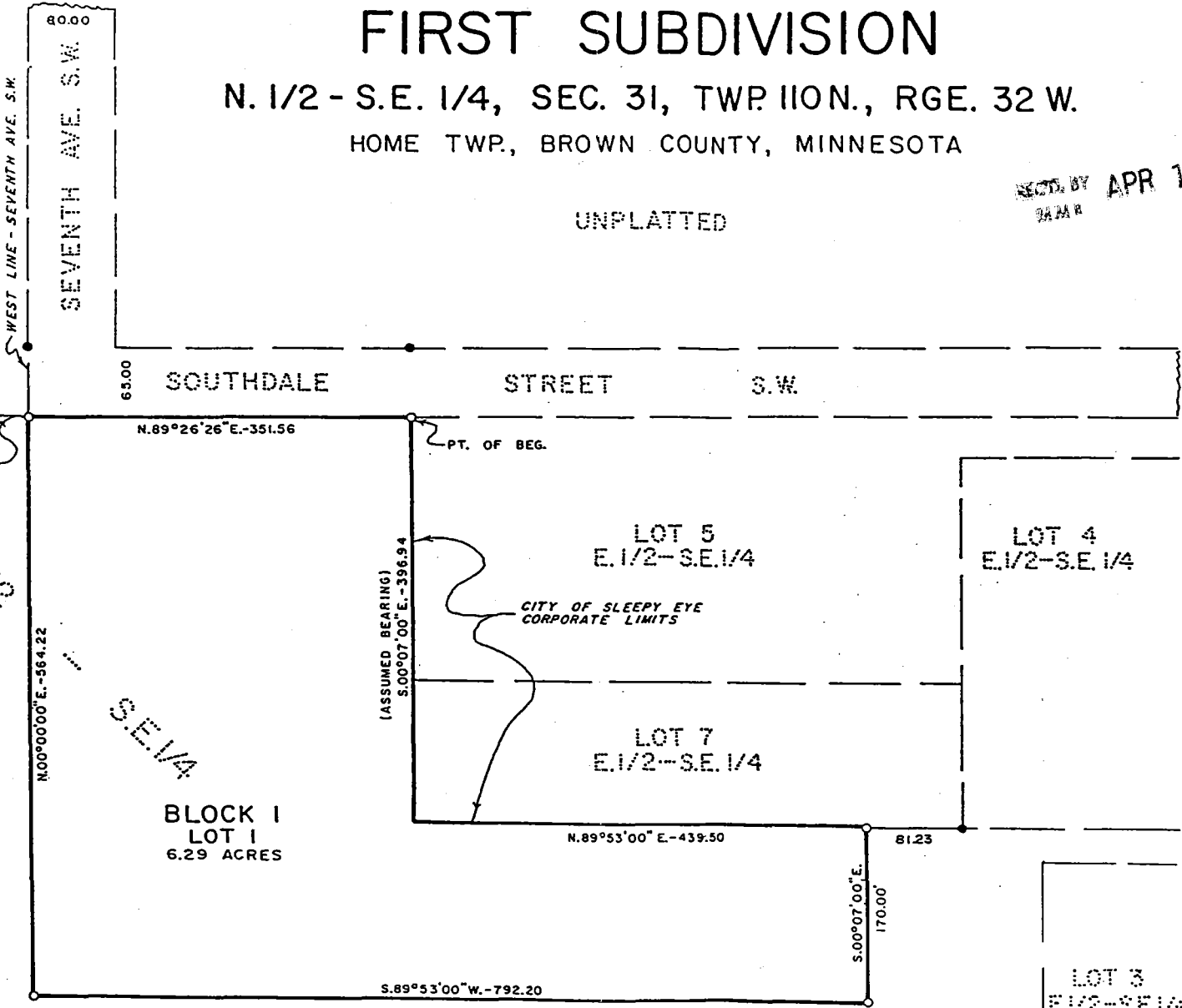
THE WEST LINE OF LOTS 5 AND 7
OF THE E. 1/2 - S.E. 1/4, 31-110-32,
IS ASSUMED TO BEAR S.00°07'00"E.

CITY OF SLEEPY EYE
CORPORATE LIMITS

N. 1/2

S.E. 1/4

BLOCK 1
LOT 1
6.29 ACRES



LOCATION MAP
31-110-32
NOT TO SCALE

