

ORDINANCE NO. 96-07

AN ORDINANCE EXTENDING THE CORPORATE LIMITS
OF THE CITY OF ROCKFORD
TO INCLUDE CERTAIN UNINCORPORATED UNPLATTED LAND
60 ACRES IN AREA ABUTTING THE CITY LIMITS

WHEREAS, a certain petition requesting annexation of the territory hereinafter described was duly presented to the Council on the 23rd day of July, 1996; and

WHEREAS, the territory is legally described as:

The East 60 acres of the South half of the Northwest Quarter of Section 20, Township 119, Range 24, Wright County, Minnesota; and,

WHEREAS, the petition was signed by all owners; and

WHEREAS, no objections to the annexation have been received from the town board, or the government body of any municipality whose boundaries abut upon the boundaries of the territory to be annexed; and

WHEREAS, a public hearing was duly held on August 27, 1996, by the governing body of the City of Rockford, Minnesota, on the proposed annexation after at least 30 days' notice by certified mail; and

WHEREAS, the territory described in the petition abuts upon the city limits at the northerly boundary thereof;

NOW, THEREFORE, the Council of the City of Rockford, Minnesota, ordains:

Section 1. Character of Territory. The City Council hereby determines (1) that the territory described herein abuts upon the City limits and is or is about to become urban or suburban in character; (2) that none of the territory is now included within the limits of any city, nor of any agricultural preserve; and (3) the territory to be annexed is not presently served by public sewer facilities and public sewer facilities are not otherwise available.

Section 2. Population. The population of the territory is two.

Section 3. Territory Annexed. The corporate limits of the City are hereby extended to include the unplatted land described above and the same is hereby annexed to and included within the City as effectually as if it had originally been a part thereof.

Section 4. Filing. The City Clerk is hereby directed to file certified copies of this ordinance with the Minnesota

Municipal Board, the Secretary of State, the Town Clerk, and the County Auditor.

Section 5. Effective Date. This Ordinance shall take effect upon its passage and publication and the filing of the certified copies as directed in Section 3, and approval of the Ordinance by the Minnesota Municipal Board.

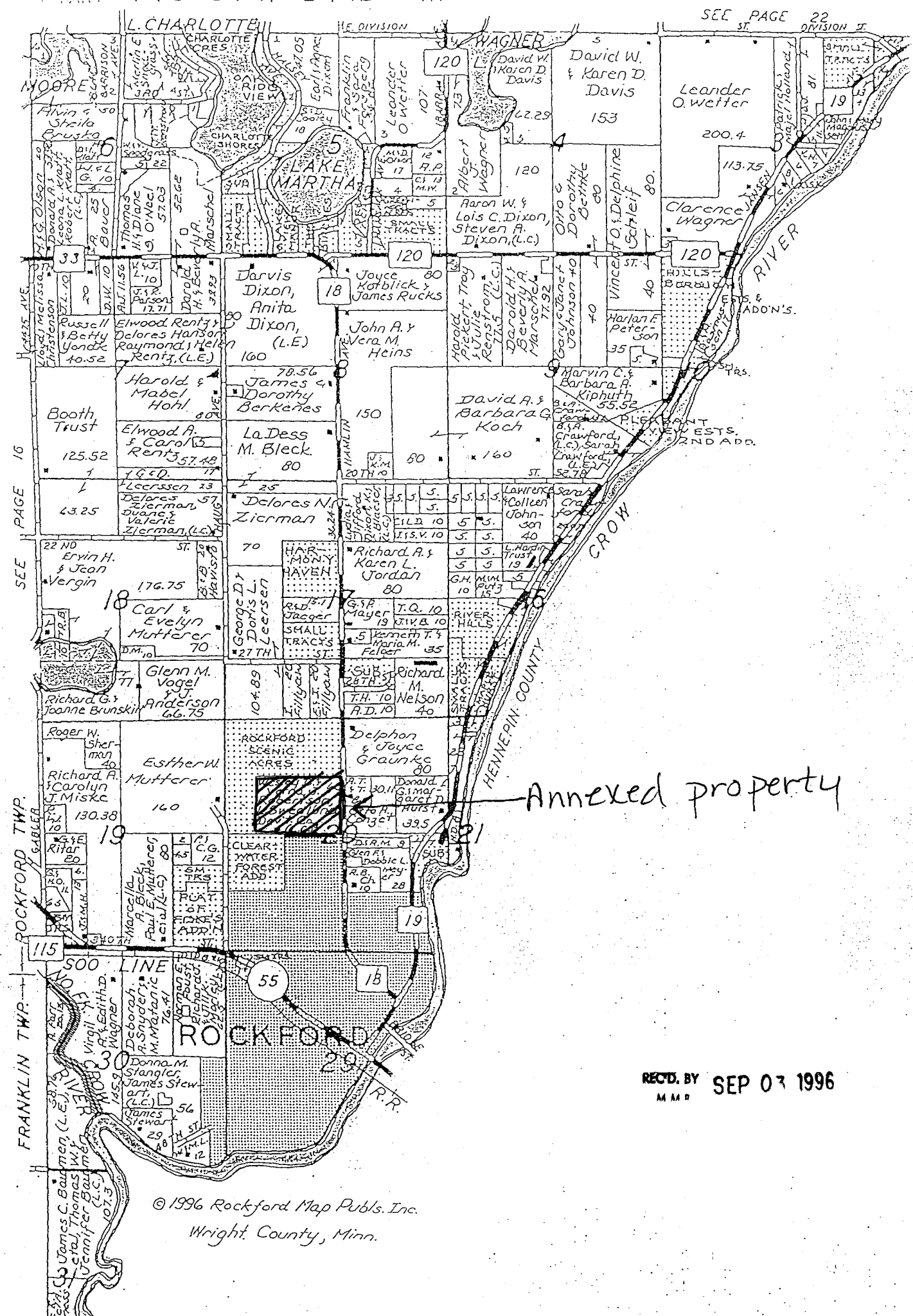
Adopted by the Council this 27th day of August, 1996.

CITY OF ROCKFORD

By Lane Wilson
Lane Wilson, Mayor

ATTEST:

Nancy Evers
Nancy Evers, City Clerk



SEE PAGE 16
 SEE PAGE 22
 FRANKLIN TWP.
 ROCKFORD TWP.
 115th
 120th

REC'D. BY SEP 03 1996
 M M B

© 1996 Rockford Map Pubs. Inc.
 Wright County, Minn.