

REC'D. BY
M M R JUL 15 1996

ORDINANCE NO. 167

AN ORDINANCE EXTENDING THE CORPORATE LIMITS OF THE
CITY OF PEQUOT LAKES TO INCLUDE CERTAIN UNINCORPORATED PROPERTY
OWNED BY AND ABUTTING UPON THE LIMITS OF THE CITY

WHEREAS, the property described below is not presently
within the corporate limits of any incorporated city; and

WHEREAS, this property abuts upon the corporate limits of the
City of Pequot Lakes boundary thereof and is deemed to be urban or
suburban in character; and

WHEREAS, this property is owned in fee by the city;

The City Council of Pequot Lakes ordains:

Section 1. Territory annexed. The corporate limits of the
City of Pequot Lakes are hereby extended to include the unplatted
properties described as follows now owned by the city:

The NW 1/4 of Section 23, Township 136, Range 29, except that part
lying West of the State of Minnesota Paul Bunyan Trail (Railroad
Right-of-Way);

The North 10 rods of the West 24 rods of the SW 1/4 NW 1/4 Section
14, Township 136, Range 29; and

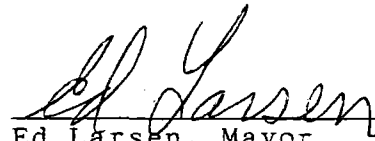
The adjoining road Rights-of-Way.

Section 2. Filing. The City Clerk is directed to file
certified copies of this ordinance with the Secretary of State, the
County Auditor of the county in which the property is located, the Town
Clerk of the affected township and the Minnesota Municipal Board.

REC'D BY
M M P JUL 15 1996

Section 3. Effective date of annexation. This ordinance takes effect upon its passage and publication and the filing of certified copies as directed in Section 2.

Adopted by the City of Pequot Lakes, Minnesota, this 2nd day of July, 1996.



Ed Larsen, Mayor

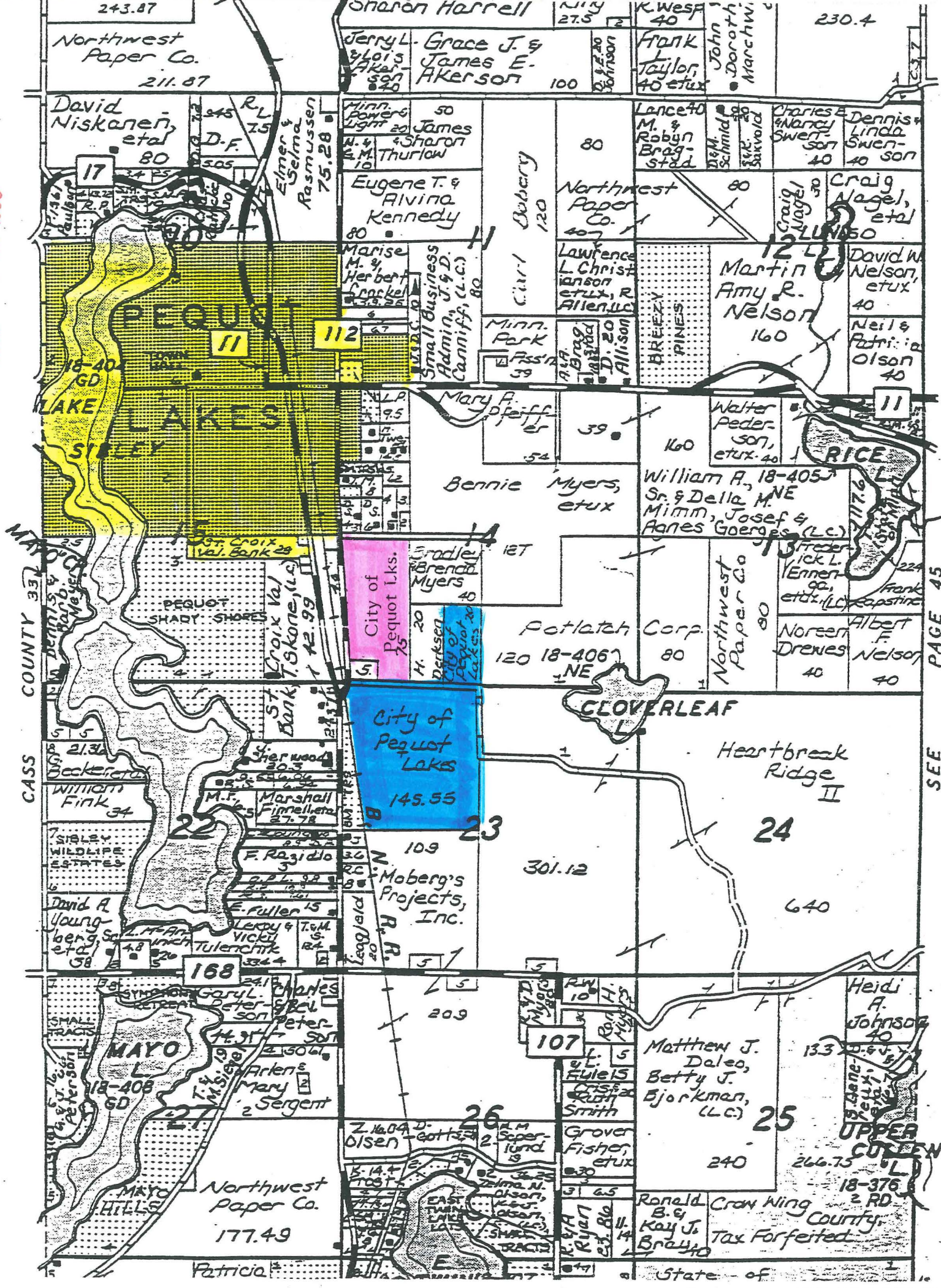
ATTEST:



Terri Russell, City Clerk

Published in the Country Echo on July 13, 1996.

RECORDED BY JUL 15 1996 M.A.R.



PAGE 45 SEE

State of