

ORDINANCE NO. 166

AN ORDINANCE EXTENDING THE CORPORATE LIMITS OF THE CITY OF PEQUOT LAKES TO INCLUDE CERTAIN UNINCORPORATED PROPERTY OWNED BY AND ABUTTING UPON THE LIMITS OF THE CITY.

WHEREAS, the property described below is not presently within the corporate limits of any incorporated city; and

WHEREAS, this property abuts upon the corporate limits of the City of Pequot Lakes boundary thereof and is deemed to be urban or suburban in character; and

WHEREAS, this property is owned in fee by the city;


The City Council of Pequot Lakes ordains:

Section 1. Territory annexed. The corporate limits of the City of Pequot Lakes are hereby extended to include the unplatted property described as follows now owned by the city: That part of the SW 1/4 of the SW 1/4 of Section 14, Township 136 North, Range 29 West, Crow Wing County, MN, described as follows: Commencing at the SE corner of the SW 1/4 of the SW 1/4, thence North 02 degrees 21 minutes 32 seconds West along the East line of the SW 1/4 of the SW 1/4 a distance of 1200.89', thence North 89 degrees 50 minutes 03 seconds West a distance of 761.18'; thence South 02 degrees 38 minutes 14 seconds East a distance of 417.39'; thence North 89 degrees 50 minutes 03 seconds East a distance of 110.10'; thence South 02 degrees 38 minutes 14 seconds East a distance of 750.70' to the South line of the SW 1/4 of the SW 1/4; thence East along the South line of said SW 1/4 of the SW 1/4 to the point of beginning. *SLB 783.7*

Section 2. Filing. The City Clerk is directed to file certified copies of this ordinance with the Secretary of State, the County Auditor of the county in which the property is located, the Town Clerk of the affected township and the Minnesota Municipal Board.

Section 3. Effective date of annexation. This ordinance takes effect upon its passage and publication and the filing of certified copies as directed in Section 2.

Adopted by the City of Pequot Lakes, Minnesota, this 7th day of May, 1996.

  
\_\_\_\_\_  
Ed Larsen, Mayor

ATTEST:

  
\_\_\_\_\_  
Terri Russell, City Clerk

Published in the Country Echo on May 16, 1996.

TRUNK HIGHWAY #371

RECORDED BY MAY 15 1996  
M A R

PAUL BUNYAN TRAIL (DNR)

SIBLEY TOWNSHIP ROAD

CONNECT TO EXISTING  
SANITARY & WATER

RAE  
AVE

36' RURAL ROADWAY

36' RURAL ROADWAY

36' RURAL ROADWAY

BLOCK  
FOUR  
2

BLOCK  
THREE

BLOCK  
TWO

BLOCK  
ONE  
3

FUTURE LOTS

SIBLEY TOWNSHIP ROAD

SIBLEY TOWNSHIP ROAD

PROPOSED 60' EASEMENT

PROPOSED 60' EASEMENT

EXIST. 80' UTILITY EASEMENT

50' PLANTING BUFFER AND UTILITY EASEMENT

50' PLANTING BUFFER AND UTILITY EASEMENT

50' PLANTING BUFFER AND UTILITY EASEMENT

36' WIDE, 4" DEPTH  
GRAVEL ROADWAY

1 1/2" WATER SERVICE AND  
6" SANITARY SERVICE  
TYPICAL OF 21

STUB & PLUG  
STORM

STUB & PLUG  
SANITARY AND WATER

LIFT  
STATION

5  
RETENTION POND

44' URBAN ROADWAY

50' PLANTING BUFFER

50' PLANTING BUFFER AND UTILITY EASEMENT

# PEQUOT LAKES INDUSTRIAL SITE

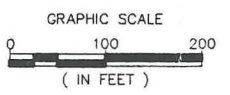
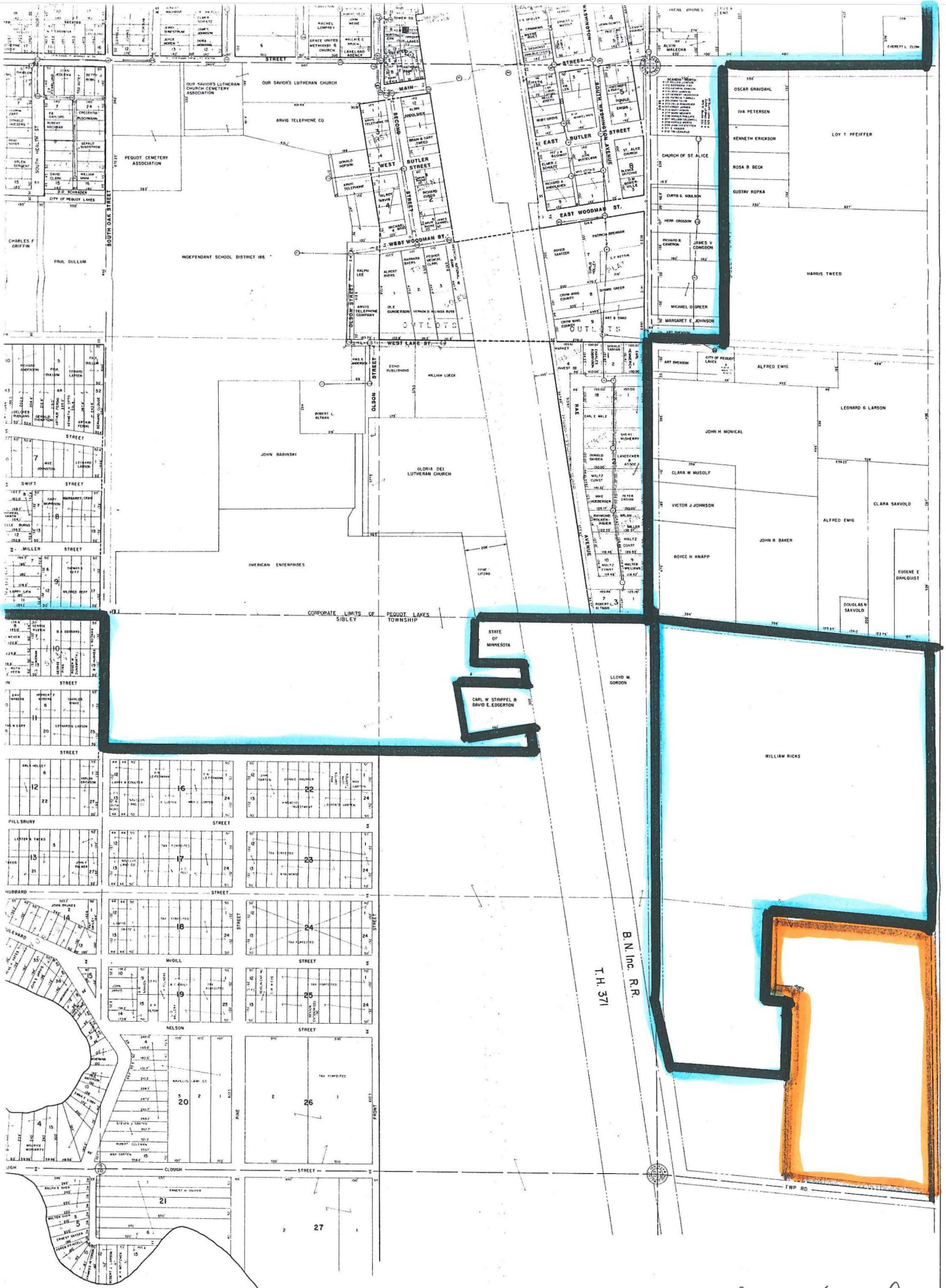


EXHIBIT "C"  
PROPOSED IMPROVEMENTS



City of Pequot Lakes Corp. Limits  
 Annexation Area Ord. No. 166