

AN ORDINANCE EXTENDING THE CORPORATE LIMITS OF THE CITY OF STEWARTVILLE TO INCLUDE CERTAIN UNINCORPORATED UNPLATTED LAND NOT EXCEEDING 200 ACRES IN AREA ABUTTING UPON THE CITY LIMITS

WHEREAS, a certain petition dated February 28, 1996, requesting annexation of the territory hereinafter described was duly presented to the Council on the 23rd day of April, 1996;

WHEREAS, the petition was signed by all owners and

WHEREAS, no objections to the annexation have been received from the township board, or the government body of any municipality whose boundaries abut upon the boundaries of the land to be annexed; and

WHEREAS, a hearing was duly held by the governing body of the City of Stewartville, Minnesota, on the proposed annexation after at least 30 day's mailed notice;

WHEREAS, the land described in the petition abuts upon the City limits at the west and south boundaries thereof;

The Council of the City of Stewartville, Minnesota ordains:

Section 1. The City Council hereby determines that the territory described herein abuts upon the City limits and is about to become urban or suburban in character; and that none of the territory is now included within the limits of any City.

Section 2. The population of the territory is 0.

Section 3. Territory annexed. The corporate limits of the City are hereby extended to include the unplatted land described as follows and the same is hereby annexed to and included within the City as effectually as if it had originally been a part thereof:

The east half of the southeast quarter (E 1/2 SE 1/4) Section 27, Township 105, Range 14, Olmsted County, MN except the following tracts of real estate, designated as parcels A, B, C, D and E.

Section 4. Filing. The City Clerk is hereby directed to file certified copies of this ordinance with the Minnesota Municipal Board, the Secretary of State, the Town Clerk, and the County Auditor.

Section 5. Effective Date. This ordinance takes effect upon its passage and publication and the filing of the certified copies as directed in Section 3, and approval of the ordinance by the Minnesota Municipal Board.

Adopted by the Council this 23rd day of April, 1996.

ATTEST:

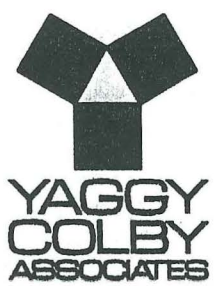
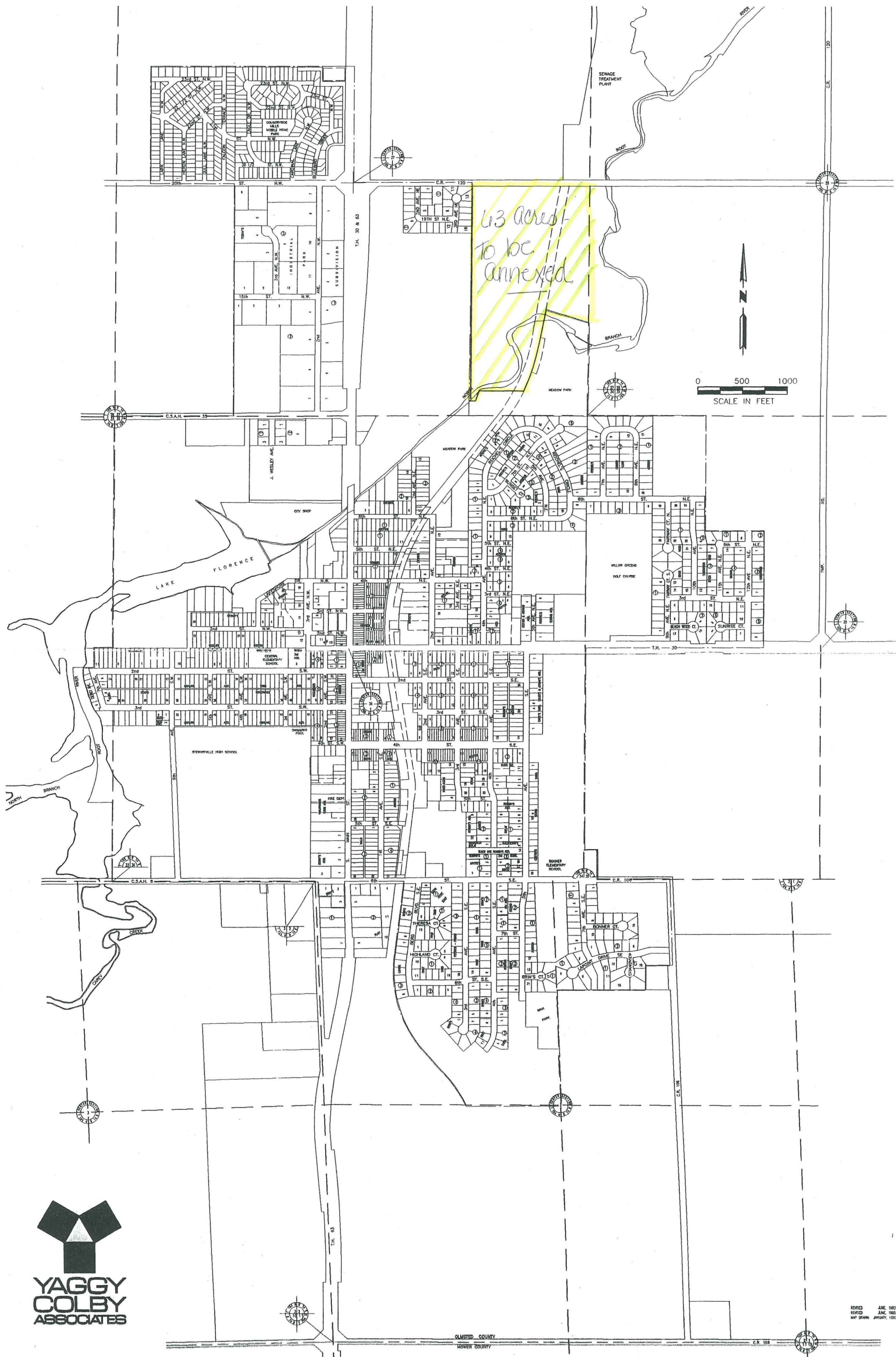
Cheryl Rueden
City Clerk

Deputy Clerk

Kary Gray
Mayor

CITY OF STEWARTVILLE, MINNESOTA

REC'D. BY APR 26 1996
M.A.R.



REVISED JUNE 1982
REVISED JUNE 1985
MAP DRAWN JANUARY 1983